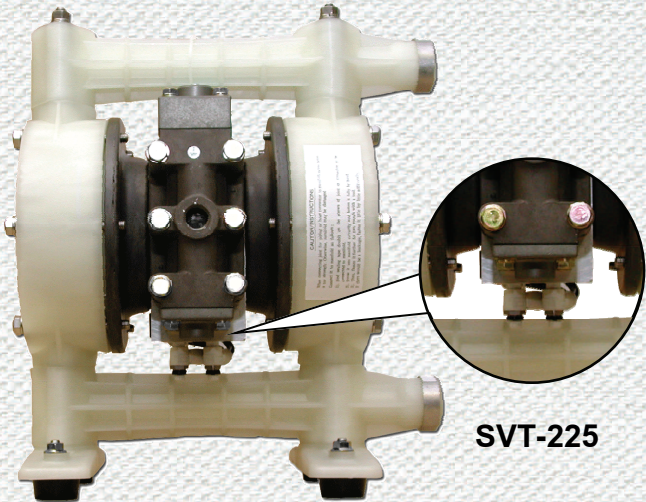
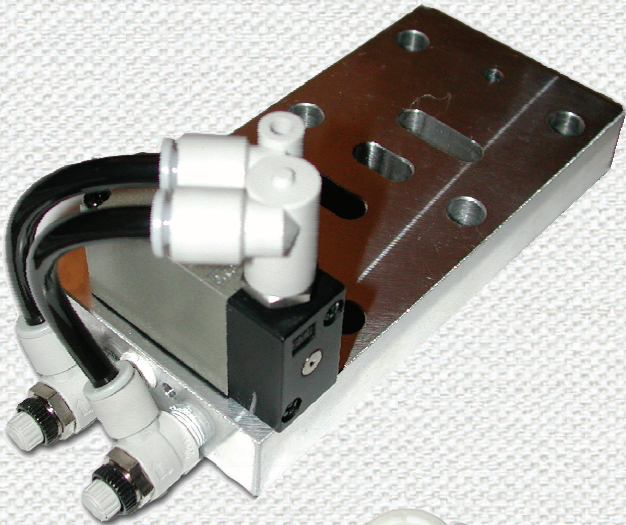


Smart Valve Technology

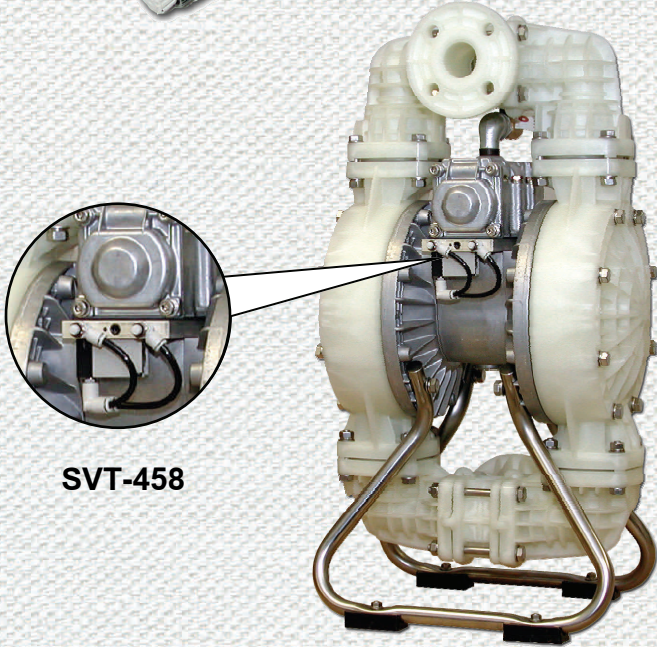
SVT-225 & 458

Yamada® is known world-wide for being the pioneer of the most reliable air valve technology available for Air-Operated Double-Diaphragm Pumps. Yamada pumps are applied to thousands of unique applications within numerous industries for which we have taken on the challenge to be successful with each and every one. During some extreme conditions, the air valve can experience spool centering which causes equalization of pressure behind each diaphragm. As a solution, Yamada proudly introduces Smart Valve Technology, a retrofit-able kit available for any NDP-20 to 80 Series Yamada Pump, which pneumatically activates the air valve instantly starting pump operation.

- Retrofit-able to existing pumps in the field
- Completely pneumatic
- No field adjustment required
- Patent Pending



SVT-225

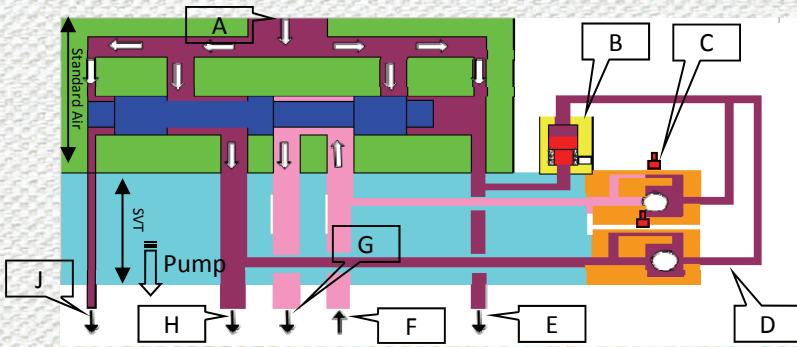


SVT-458

Note:
SVT will not prevent spool centering due to air starvation
For optimal operation, clean dry air is recommended
Pump air inlet pressure required is 30 to 100 PSI
Reference Form# IS0205 for installation instructions.

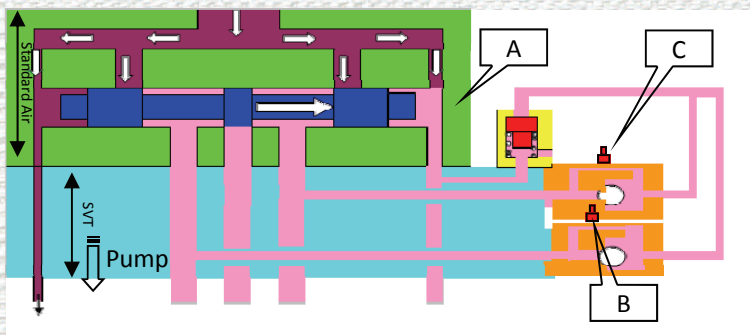


Principles of Operation



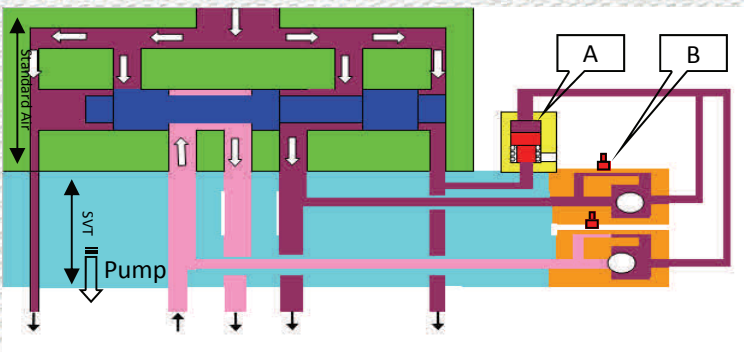
Step 1

Letter	Description	Letter	Description
A	Supplied air port	E	To Pilot Valve B
B	Normally closed Smart Valve	F	To Air Chamber B
C	Needle Valves	G	Exhaust
D	Smart Valve requires constant pressure to prevent unintentional activation	H	To Air Chamber A
		J	To Pilot Valve A



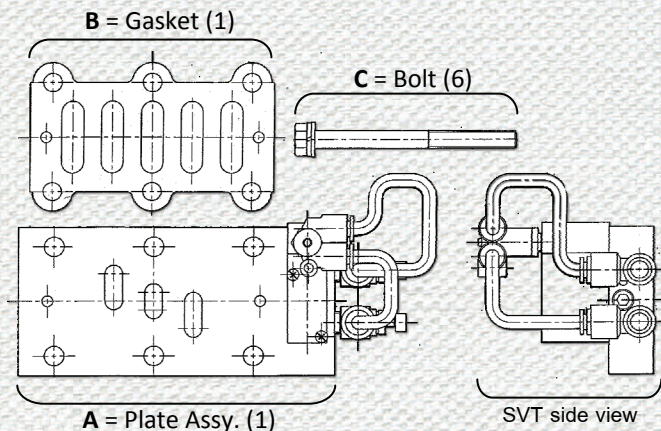
Step 2

Letter	Description
A	If C-Spool centers to neutral position, the constant pressure applied to the spring loaded Smart Valve will decrease allowing the pilot valve port to vent the C-Spool. When one end of the C-Spool is vented, positive from the opposite allows a shift, in turn, starting the pump.
B	Pre-adjusted needle valve allows Smart Valve activation within one second.
C	Needle Valves



Step 3

Letter	Description
A	Once the spool moves from the neutral position, the air relief valve will sense the pressure differential and close the vent port to atmosphere.
B	Needle Valves



Pump Series	NDP-20/25	NDP-40/50/80
Kit Model	804066 SVT-225KIT	804065 SVT-458KIT
Kit Includes	A, B, C	A, B, C, D*
Dimensions (inches)	2.76W x 5.51D x 0.59H	3.54W x 9.45D x 0.59H

* D = Sleeve (1), not shown

Label:

