

Air Operated Double Diaphragm Pump



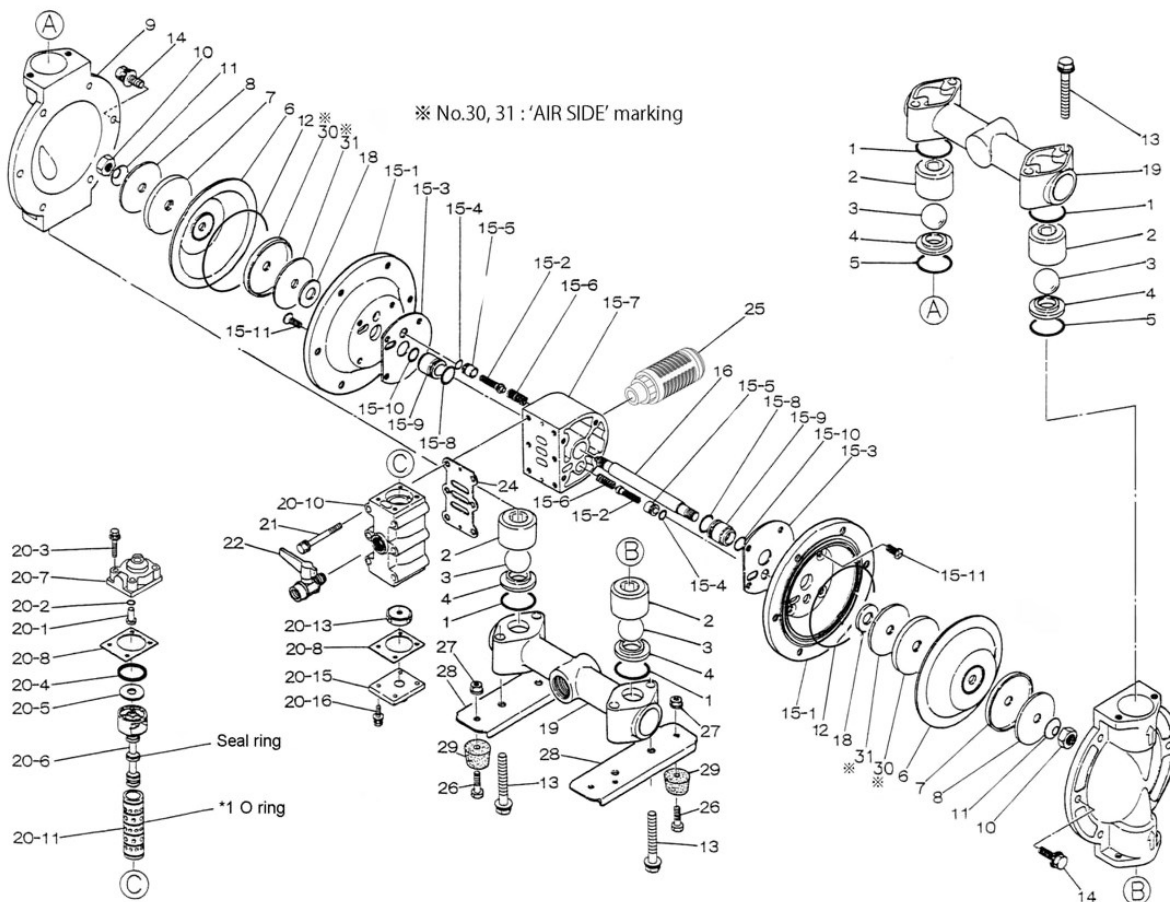
To Purchase:

- ☎ 800-990-7867
- ✉ sales@yamadapump.com
- 📍 Find My Rep

More Information:

- ▶ YouTube: @yamadapump
- 🌐 yamadapump.com
- Data Sheets | CAD Drawings | Manuals Literature | BOM | Performance Curves

Trial Program



Air Operated Double Diaphragm Pump

	NDP-25BAC	NDP-25BAN	NDP-25BAE	NDP-25BAH	NDP-25BAS	NDP-25BAV			
	851527	851528	851529	852100	852701	851530			
REF. NO.	PART NO.	PART NO.	PART NO.	PART NO.	PART NO.	PART NO.	DESCRIPTION	QTY.	REORDER
1	640044	640044	683997	640044	683997	642044	O RING 46MM X 3.5MM B	4	
2	711702	711702	711702	711702	711702	711702	BALL GUIDE 25AL	4	
3	770556	770581	770590	773127	773171	770599	BALL 25	4	
4	590087	590087	590087	590087	590087	590087	VALVE SEAT 25AL/FC	4	
5	640134	640134	683996	640134	683996	642134	O RING 44.5MM X 3MM	2	
6	772961	772962	772963	771363	771974	772964	DIAPHRAGM 25	2	
7	709151	709151	709151	709151	709151	709151	CENTER DISK 25R	2	
8	709150	709150	709150	709150	709150	709150	WASHER 25R	2	
9	711687	711687	711687	711687	711687	711687	OUT CHAMBER 25AL	2	
10	682263	682263	682263	682263	682263	682263	NUT SS M14 X 1.5	2	
11	682730	682730	682730	682730	682730	682730	CONED DISK SPRING M14	2	
12	-	-	-	640154	640154	-	O-RING	2	
13	611185	611185	611185	611185	611185	611185	BOLT	8	
13	631917	631917	631917	631917	631917	631917	WAVE WASHER	8	
14	611177	611177	611177	611177	611177	611177	BOLT	12	
14	631917	631917	631917	631917	631917	631917	WAVE WASHER	12	
15	804880	804880	804880	804880	804880	804880	BODY ASSY	1	
15- 1	715939	715939	715939	715939	715939	715939	AIR CHAMBER	2	
15- 2	802360	802360	802360	802360	802360	802360	PILOT VALVE ASSY 20/25	2	
15- 3	771057	771057	771057	771057	771057	771057	GASKET 20/25	2	
15- 4	640009	640009	640009	640009	640009	640009	O RING 11MM X 2.5MM B	2	
15- 5	771945	771945	771945	771945	771945	771945	PILOT VALVE SEAT 20/25	2	
15- 6	708666	708666	708666	708666	708666	708666	SPRING 20/25	2	
15- 7	709812	709812	709812	709812	709812	709812	BODY 20/25	1	
15- 8	685276	685276	685276	685276	685276	685276	O RING 23.3MMX2.4MM	2	
15- 9	772703	772703	772703	772703	772703	772703	THROAT BEARING 20/25 N	2	
15-10	685414	685414	685414	685414	685414	685414	V-PACKING 20/25	2	
15-11	682486	682486	682486	682486	682486	682486	BOLT FLAT HD W/WASHER	8	
16	709162	709162	709162	709162	709162	709162	CENTER ROD 25	1	
18	771054	771054	771054	771054	771054	771054	CUSHION 20/25	2	
19	831281	831281	831281	831281	831281	831281	MANIFOLD 25AL	2	
20	802362	802362	802362	802362	802362	802362	VALVE ASSY	1	
20- 1	709161	709161	709161	709161	709161	709161	RESET BUTTON 20/25	1	
20- 2	640005	640005	640005	640005	640005	640005	O RING 7.5MM X 2.0MM	1	
20- 3	682704	682704	682704	682704	682704	682704	BOLT M6 FT ZINC W/WASHER	4	
20- 4	771241	771241	771241	771241	771241	771241	PACKING 20/25	1	
20- 5	715961	715961	715961	715961	715961	715961	WASHER	1	
20- 6	802400	802400	802400	802400	802400	802400	C SPOOL ASSY	1	
20-6 seal	771053	771053	771053	771053	771053	771053	SEAL RING	5	
20- 7	710221	710221	710221	710221	710221	710221	CAP A 20/25 METAL	1	
20- 8	771240	771240	771240	771240	771240	771240	GASKET 20/25	2	
20-10	711639	711639	711639	711639	711639	711639	VALVE BODY 20/25 METAL	1	
20-11	803931	803931	803931	803931	803931	803931	SLEEVE ASSY	1	
20-11-*1	771080	771080	771080	771080	771080	771080	O-RING	6	
20-13	771914	771914	771914	771914	771914	771914	CUSHION 20/25	1	
20-15	709305	709305	709305	709305	709305	709305	CAP B 20/25 METAL	1	
20-16	682262	682262	682262	682262	682262	682262	BOLT M6 FT ZINC W/WASHER	4	
21	682265	682265	682265	682265	682265	682265	BOLT M8 PT ZINC W/WASHER	6	
22	684320	684320	684320	684320	684320	684320	BALL VALVE 25&25F 3/8	1	
24	771056	771056	771056	771056	771056	771056	GASKET 20/25	1	
25	804697	804697	804697	804697	804697	804697	MUFFLER 20/25PP	1	
26	611148	611148	611148	611148	611148	611148	BOLT M8X1.25X22 HEX FT	4	
27	682276	682276	682276	682276	682276	682276	NUT W/ FLANGE M8 X 1.2	4	
28	709156	709156	709156	709156	709156	709156	BASE 25 METAL	2	
29	770551	770551	770551	770551	770551	770551	FOOT RUBBER 15PP,20/25	4	
30	716258	716258	716258	716258	716258	716258	CENTER DISK	2	
31	716259	716259	716259	716259	716259	716259	WASHER	2	
KIT	K25-MC-1	K25-MN-1	K25-ME-1	K25-MH-1	K25-MS-1	K25-MV-1	LIQUID END KIT		
KIT	K225-AM						AIR MOTOR KIT		

Air Operated Double Diaphragm Pump

General Tools:

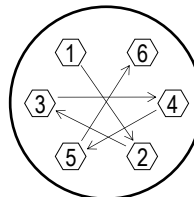
- Socket wrenches - 10mm, 12mm, 13mm, 17mm, 22mm
- Hexagonal box wrench - 5mm
- Open-end wrenches - 22mm

Special Tools:

- Sleeve remover (713148) used to remove sleeves (sold separately).

Miscellaneous:

- Assembly Oil - turbine oil none additional class 1 (equivalent to ISO VG32 grade)
- Nuts - M14 x 1.5
- Urea grease grade (NLGI) No. 2
- Lubricants - equivalent to Loctite Anti-Seize 767



Tightening torque for center rod and out chambers.

Center Rod	29 ft-lbf {40 N-m}
Out Chambers C/N/E/V	8 ft-lbf {10 N-m}
Out Chambers H/S	15 lbf-ft {20 N-m}

Tightening torque for manifold bolts.

BAC/N/E/H/S/V	8 ft-lbf {10 N-m}
---------------	-------------------

Customer Notes

Model #: _____
 Description: _____
 Serial #: _____
 Date Installed: _____
 Department Location: _____
 Tag/Project: _____