

EXPLODED VIEW & PARTS LISTING

Air Operated Double Diaphragm Pump

Model: NDP-25BA[x]-PP

Aluminum Series

(rubber fitted w/non-metallic center body)



To Purchase:

☎ 800-990-7867

✉ sales@yamadapump.com

📍 Find My Rep

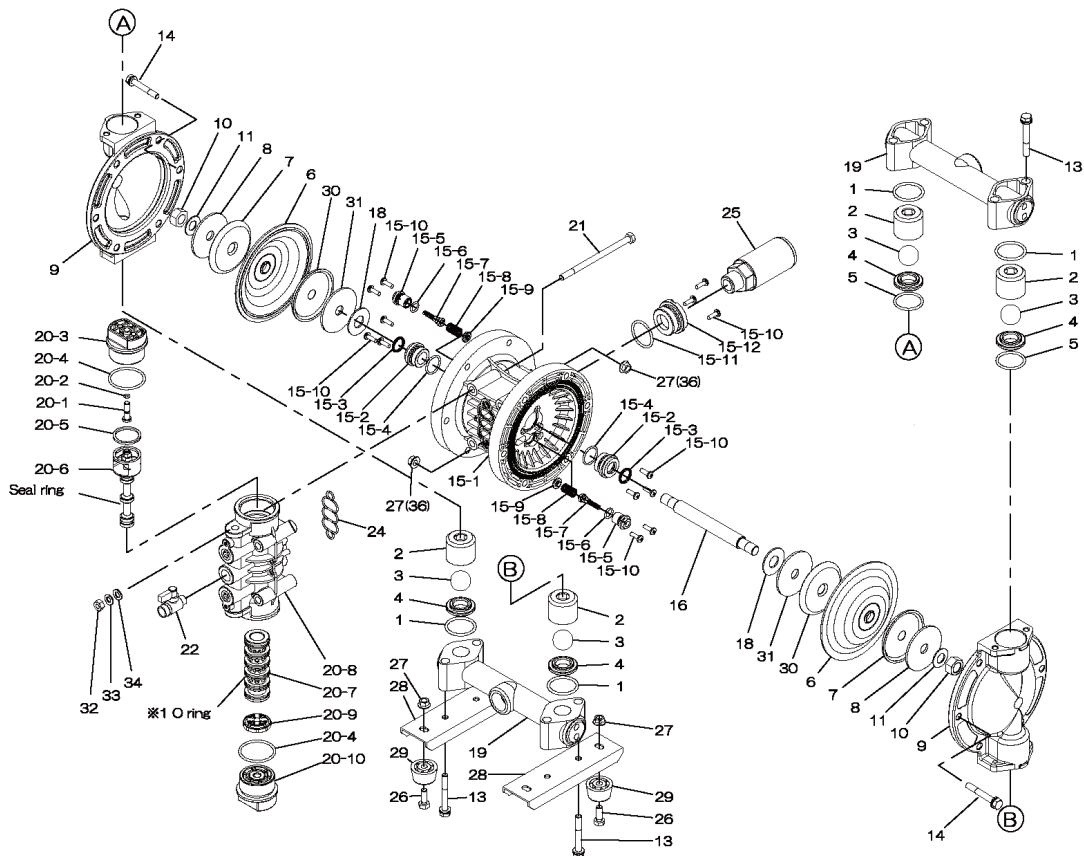
More Information:

▶ YouTube: @yamadapump

🌐 yamadapump.com

Data Sheets | CAD Drawings | Manuals
Literature | BOM | Performance Curves

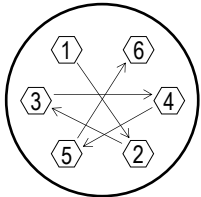
Trial Program



Air Operated Double Diaphragm Pump (rubber fitted w/non-metallic center body)

	NDP-25BAC-PP	NDP-25BAE-PP	NDP-25BAH-PP	NDP-25BAN-PP	NDP-25BAS-PP	NDP-25BAV-PP			
	854122	854124	854127	854123	854128	854125			
REF. No.	PART No.	PART No.	PART No.	PART No.	PART No.	PART No.	DESCRIPTION	QTY.	REORDER
1	640044	683997	640044	640044	683997	642044	O-RING	4	
2	711702	711702	711702	711702	711702	711702	BALL GUIDE	4	
3	770556	770590	773127	770581	773171	770599	BALL	4	
4	590087	590087	590087	590087	590087	590087	VALVE SEAT	4	
5	640134	683996	640134	640134	683996	642134	O-RING	2	
6	772961	772963	771363	772962	771974	772964	DIAPHRAGM	2	
7	709151	709151	709151	709151	709151	709151	CENTER DISC	2	
8	709150	709150	709150	709150	709150	709150	WASHER	2	
9	711687	711687	711687	711687	711687	711687	OUT CHAMBER	2	
10	682263	682263	682263	682263	682263	682263	NUT	2	
11	682730	682730	682730	682730	682730	682730	CONED DISK SPRING	2	
12	-	-	640154	-	640154	-	O-RING	2	
13	611185	611185	611185	611185	611185	611185	BOLT	8	
13	631917	631917	631917	631917	631917	631917			
14	611177	611177	611177	611177	611177	611177	BOLT	12	
14	631917	631917	631917	631917	631917	631917			
15	804604	804604	804604	804604	804604	804604	BODY ASSY.	1	
15-1	772929	772929	772929	772929	772929	772929	BODY-PP	1	
15-2	772931	772931	772931	772931	772931	772931	THROAT BEARING	2	
15-3	685414	685414	685414	685414	685414	685414	V-PACKING	2	
15-4	685276	685276	685276	685276	685276	685276	O-RING	2	
15-5	772932	772932	772932	772932	772932	772932	VALVE SEAT	2	
15-6	640009	640009	640009	640009	640009	640009	O-RING	2	
15-7	802360	802360	802360	802360	802360	802360	PILOT VALVE ASSY.	2	
15-8	708666	708666	708666	708666	708666	708666	SPRING	2	
15-9	772948	772948	772948	772948	772948	772948	SPRING SEAT	2	
15-10	686030	686030	686030	686030	686030	686030	TAPPING SCREW	13	
15-11	640132	640132	640132	640132	640132	640132	O-RING	1	
15-12	772933	772933	772933	772933	772933	772933	BUSHING	1	
16	709162	709162	709162	709162	709162	709162	CENTER ROD	1	
18	771054	771054	771054	771054	771054	771054	CUSHION	2	
19	831281	831281	831281	831281	831281	831281	MANIFOLD ASSY.	2	
20	804608	804608	804608	804608	804608	804608	VALVE BODY ASSY.	1	
20-1	772991	772991	772991	772991	772991	772991	RESET BUTTON	1	
20-2	640002	640002	640002	640002	640002	640002	O-RING	1	
20-3	772946	772946	772946	772946	772946	772946	CAP A	1	
20-4	640043	640043	640043	640043	640043	640043	O-RING	2	
20-5	771241	771241	771241	771241	771241	771241	PACKING	1	
20-6	802400	802400	802400	802400	802400	802400	C-SPOOL ASSY.	1	
20-6-seal	771053	771053	771053	771053	771053	771053	SEAL RING	5	
20-7	804609	804609	804609	804609	804609	804609	SLEEVE ASSY.	1	
20-7-*1	686029	686029	686029	686029	686029	686029	O-RING	6	
20-8	832903	832903	832903	832903	832903	832903	VALVE BODY	1	
20-9	771914	771914	771914	771914	771914	771914	CUSHION	1	
20-10	772947	772947	772947	772947	772947	772947	CAP B	1	
21	682265	682265	682265	682265	682265	682265	BOLT	4	
22	684320	684320	684320	684320	684320	684320	BALL VALVE	1	
24	771056	771056	771056	771056	771056	771056	GASKET	1	
25	804697	804697	804697	804697	804697	804697	MUFFLER	1	
26	611148	611148	611148	611148	611148	611148	BOLT	4	
27	682276	682276	682276	682276	682276	682276	NUT W/FLANGE	16	
28	709156	709156	709156	709156	709156	709156	BASE	2	
29	770551	770551	770551	770551	770551	770551	FOOT RUBBER	4	
30	716258	716258	716258	716258	716258	716258	CENTER DISC	2	
31	716259	716259	716259	716259	716259	716259	WASHER	2	
KIT	K25-MC-1	K25-ME-1	K25-MH-1	K25-MN-1	K25-MS-1	K25-MV-1	LIQUID SIDE KIT		
KIT	K225-AP						AIR MOTOR KIT		

Air Operated Double Diaphragm Pump *(rubber fitted w/non-metallic center body)*



Tightening torque for center rod and out chambers.

Center Rod	29 ft-lbf {40 N-m}
Out Chambers C/N/E/V	8 ft-lbf {10 N-m}
Out Chambers H/S	15 ft-lbf {20 N-m}

Tightening torque for manifold retainer bolts.

C/E/N/V	8 ft-lbf {10 N-m}
S/H	25 ft-lbf {35 N-m}

General Tools:

- Socket wrench - 10mm, 12mm, 13mm, 17mm, 22mm
- Hexagonal box wrench - 5mm
- Open-end wrench - 12mm, 13mm, 22mm
- Adjustable angle wrenches
- Phillips head screw driver

Special Tools:

- Sleeve remover (713148) used to remove the sleeve.

Miscellaneous:

- Assembly Oil - turbine oil none additional class 1 (equivalent to ISO VG32 grade)
- Nuts - M14 x 1.5
- Urea grease grade (NLGI) No. 2

Customer Notes	
<i>Model #:</i>	_____
<i>Description:</i>	_____
<i>Serial #:</i>	_____
<i>Date Installed:</i>	_____
<i>Department Location:</i>	_____
<i>Tag/Project:</i>	_____