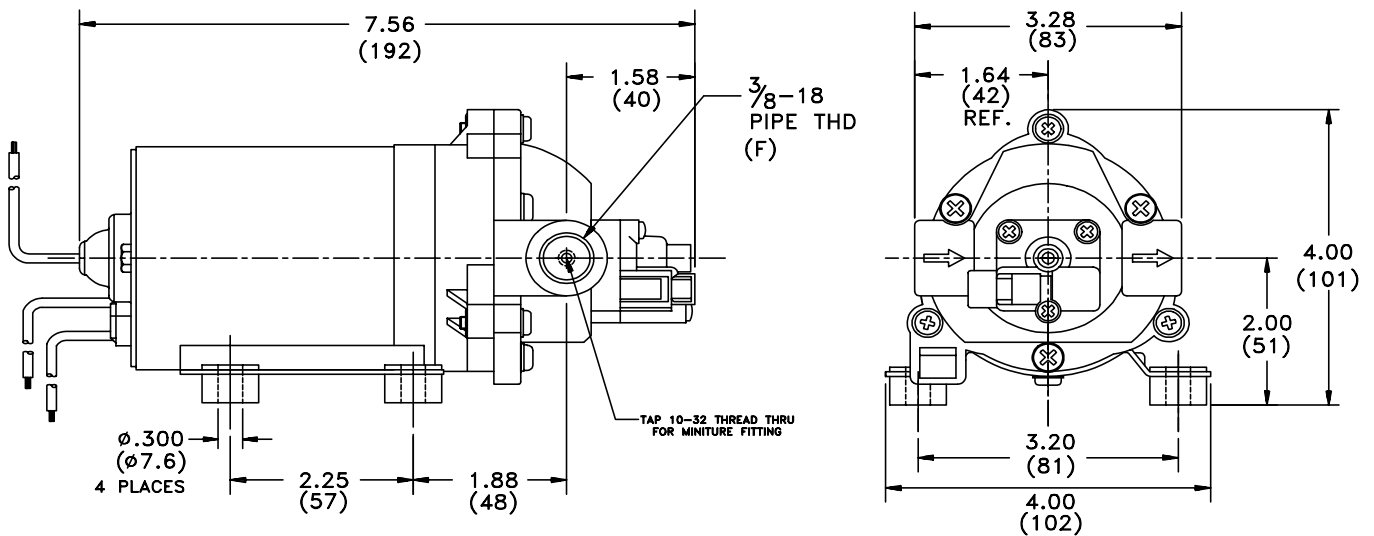


SPECIFICATIONS:

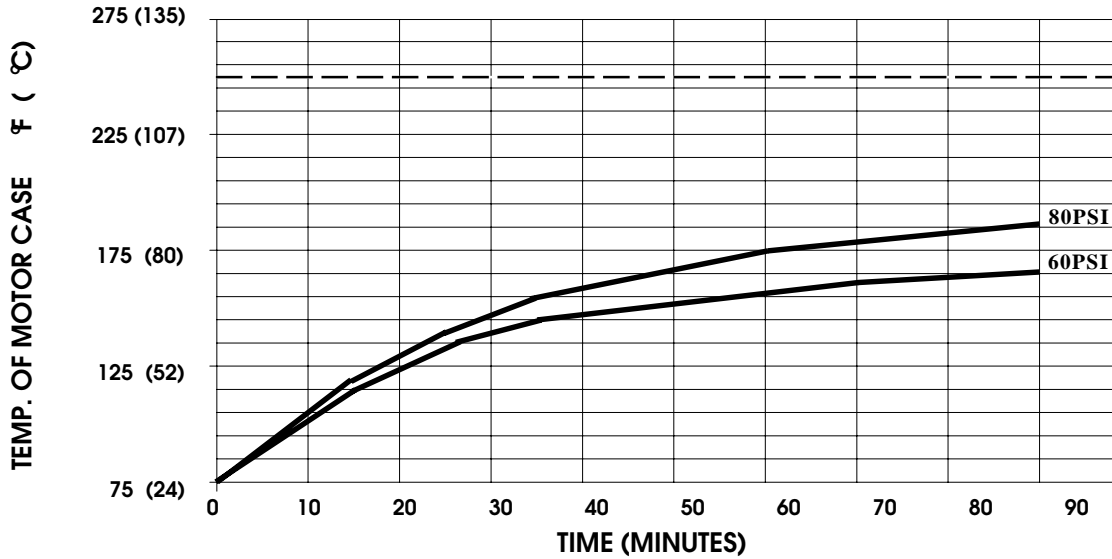
- MODEL NUMBER:** 8095-213-296
- PUMP DESIGN:** Positive Displacement 3 Chamber Diaphragm Pump
- CHECK VALVE:** (1-Way Operation) Prevents Reverse Flow
- CAM:** 3.0 Degree
- MOTOR:** Permanent Magnet, P/N 11-160-02, Thermally Protected
- VOLTAGE:** 230 VAC Nominal
- PRESSURE SWITCH:** Adjustable Shut-Off (Range 80-100 PSI)
 Factory Set @ 90± 5 PSI, Turn On 80 PSI ± 5 PSI
- LIQUID TEMPERATURE:** 170 Degrees Fahrenheit (77 Degrees Centigrade) Max.
- PRIME:** Self-Priming Up To 10 Ft. Vertical,
 Max. Inlet Pressure 30 PSI (2.1 Bar)
- PORTS:** 3/8"-18 NPT Female
- MATERIAL OF CONSTRUCTION:**
 - PLASTICS-** Polypropylene
 - VALVES-** EPDM
 - DIAPHRAGM-** Santoprene
 - FASTENERS-** Zinc Plated Steel
- NET WEIGHT:** 3.8 Lbs (1.72 Kg)
- DUTY CYCLE:** Intermittent (See Temperature Rise Chart)
- TYPICAL APPLICATIONS:** Water Delivery

DIMENSIONS:



TEMPERATURE RISE

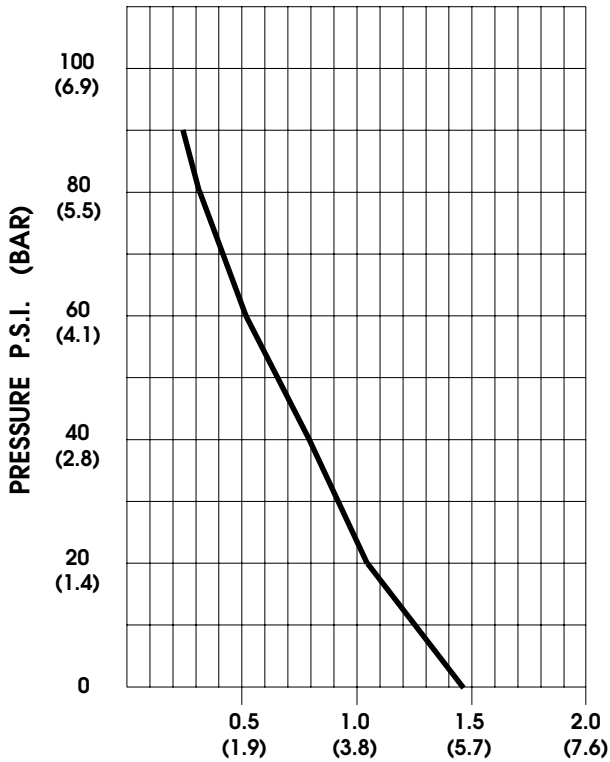
MODEL: 8095-213-296



THIS GRAPH IS FOR USE AS A DESIGN GUIDE. IT IS BASED ON RUNNING CONTINUOUSLY WITH AN AMBIENT TEMPERATURE OF 75 °F IN STILL AIR. THE THERMAL PROTECTOR WILL OPEN WHEN THE CASE TEMPERATURE REACHES 250° DEGREES F.

[----- TRIPPOINT OF THERMAL PROTECTOR]

TYPICAL PERFORMANCE



PRESSURE (PSI)	FLOW (GPM/LIT)	RPM MIN/MAX	CURRENT (AMPS)	VOLTAGE (VOLTS)
OPEN	1.45/5.5	2310/2320	1.6	230VAC
10	1.32/5.0	2280/2285	2.0	"
20	1.15/4.3	2240/2250	2.4	"
30	0.98/3.7	2200/2220	2.7	"
40	0.79/3.0	2170/2195	3.0	"
50	0.66/2.5	2135/2170	3.3	"
60	0.52/2.0	2105/2150	3.6	"
70	0.39/1.5	2075/2115	3.9	"
80	0.31/1.2	2040/2090	4.2	"
90	0.25/0.9	2010/2060	4.4	"

FLOW - GALLONS PER MINUTE (LITERS PER MINUTE)

-SPECIFICATIONS SUBJECT TO CHANGE WITHOUT NOTICE.
-ALL DATA BASED ON TESTING WITH WATER.