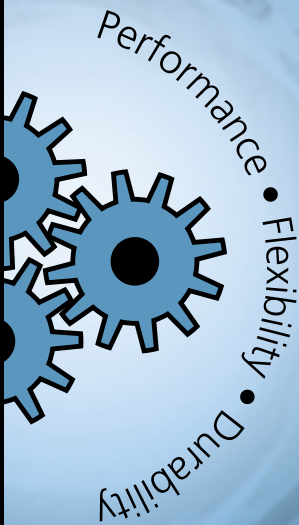


**SHERTECH®**

# High Performance Gear Pumps

---



  
A WICOR COMPANY  
**INDUSTRIAL PRODUCTS GROUP**

# SHERTECH®

In doing business with our team, you'll find that our SherTech positive displacement gear pumps are ideal for a wide range of Industrial, Agricultural, and Commercial applications.

Hypro Industrial Products Group is excited to bring you the complete gear pump line from SherTech, to provide your customers with innovative systems solutions.

## Performance

Depending on the properties of the liquid, flow capabilities deliver up to 24 gpm and pressures up to 200 psi, temperatures up to 400°F, and viscosities up to 50,000 cps.

## Flexibility

Both close coupled and pedestal mounted pumps are offered in three types of body construction. 316 Stainless Steel can be specified for pumping clean, hard-to-transfer, high-temperature and/or highly-corrosive liquids. Cast iron or bronze meet the requirements of transferring a broad range of non-abrasive fluids.

## Durability

SherTech pumps are simple in construction with a minimum number of moving parts for less maintenance and longer life. Design features include mechanical seals, seal chambers with flush ports, oversized carbon graphite bushings, integral ball bearings and piston relief valves.

Regardless of the SherTech pump series you select from, our team of customer service representatives and engineers are available to provide innovative solutions to your most complex pumping problems. We want to maximize your success. If you have any questions on any of the pumps you see in this brochure, you can reach our staff at **(800) 471-0460**.



# "AK" Series



Model Number: AMBN2VA



Model Number: AMCV11A

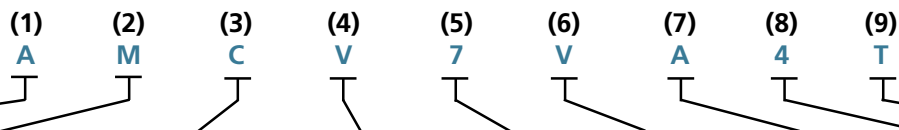
## Features

- ✦ Closed coupled to NEMA spec. motors . . . . . Convenient close-coupled mounting
- ✦ Spline driven shaft assembly . . . . . High torque capabilities and withstands frequent start/stop operations
- ✦ Oversized ball bearings . . . . . Ensures pump concentricity, and allows for "floating gear design"
- ✦ Mechanical seals and high-temp o-rings . . . . . High vacuum, long-term reliability
- ✦ Compact design . . . . . Fits in tight spaces
- ✦ Optional helical gears . . . . . Quiet, non-clogging operation
- ✦ Anti-friction carbon bearings . . . . . Reduces wear for added longevity
- ✦ Extremely quiet operation . . . . . Noise-free environment
- ✦ Optional internal or external relief valve . . . . . Safeguards against pressure buildup or used as a metering device

## Benefits

## MODEL ORDERING CODES AND OPTIONS

Example Model: AMCV7VA4T



1st	2nd	3rd	4th	5th	6th	7th	8th	9th
Series	Mounting	Material	Seal (Mech)	Gear Size (Ports)	Options	Brackets	Motor Mounted Only	
							HP	Type
A: AK Series	M: Motor Mount	C: Cast Iron B: Bronze*	B: Buna N Nitrile V: Viton	1: 3/8" 2: 1/2" 7: 3/4" 11: 3/4"	V: Relief Value	A: 56C B: 56C/145TC	1: 1/2 2: 1/2 3: 3/4 4: 1	"Blank": no code single phase ODP motor 3: 3 phase ODP motor T: 1 phase EFC 3T: 3 phase TEFC

\* Size 7 and 11 gear pumps available only in cast iron.  
Note: Maximum motor speed 1725 RPM.

# 316 Stainless Steel Series



Model Number: PSV2A1



Model Number: MSV4A

## Features

- ✦ Closed coupled to NEMA spec. motors . . . . . Compact size/multiple options
- ✦ Polyphenylene Sulfide (PPS) gears . . . . . Inert to most chemicals, quieter operation, longer life, and prevents galling
- ✦ Investment cast 316 SS construction . . . . . Maximum chemical resistance for aggressive and high-purity fluids
- ✦ Integral self-lubricating ball bearing assembly . . . . . Extra support for all applications
- ✦ Oversized oil-less carbon graphite bushings . . . . . Increased durability and longevity
- ✦ Mechanically sealed . . . . . Superior chemical resistance, trouble-free operation
- ✦ Standard flush ports . . . . . Allows for prefill and decontamination of chemicals on elastomers and seal faces
- ✦ Modular design . . . . . Ease of repair and maintenance

## Benefits

## MODEL ORDERING CODES AND OPTIONS

Example Model: MSV4A43T

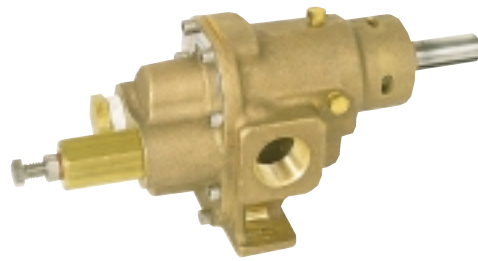
(1) M    (2) S    (3) V    (4) 4    (5) A    (6) 4    (7) 3T

1st	2nd	3rd	4th	Motor Mounted Only		7th
Mounting	Material	Seal (Mech)	Gear Size (Ports)	Brackets	HP	Type
P: Pedestal M: Motor Mount	S: Stainless Steel	N: Buna Nitrile V: Viton T: Teflon	2: 3/8" 4: 1/2" 6: 1"	A: 56C B: 56C/145TC C: 182/184TC	1: 1/2 2: 1/2 3: 3/4 4: 1 5: 1 1/2 6: 2	"Blank": no code single phase ODP motor 3: 3 phase ODP motor T: 1 phase EFC 3T: 3 phase TEFC

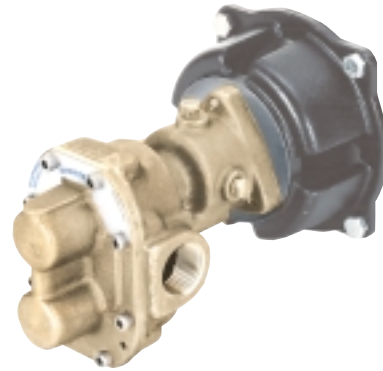
Note: Maximum rated pump speed 1725 RPM.



# Bronze Series



Model Number: PBN6



Model Number: MBN6C

## Features

- ✦ Closed coupled to NEMA spec. motors . . . . . Compact size/multiple options
- ✦ Polyphenylene Sulfide (PPS) gears . . . . . Inert to most chemicals, quieter operation, and longer life
- ✦ Rugged cast bronze construction . . . . . Suitable for water, water-based fluids, and mild chemicals
- ✦ Integral self-lubricating ball bearing assembly . . . . . Extra support for all applications
- ✦ Carbon graphite bushings . . . . . Increased durability and longevity
- ✦ Mechanically sealed . . . . . Superior chemical resistance, trouble-free operation
- ✦ Standard flush ports . . . . . Allows for prefill and decontamination of chemicals on elastomers and seal faces
- ✦ Optional adjustable relief valve . . . . . Safeguards against pressure buildup or used as a metering device

## Benefits

## MODEL ORDERING CODES AND OPTIONS

Example Model: **MBN5VC6T**

1st	2nd	3rd	4th	5th	6th	7th	8th
					Motor Mounted Only		
					Brackets	HP	Type
P: Pedestal M: Motor Mount	B: Bronze	N: Buna Nitrile V: Viton	2: ¼" 3: ⅜" 4: ½" 5: ¾" 6: 1"	V: Relief Valve	A: 56C B: 56C/145TC C: 182/184TC	1: ½ 2: ½ 3: ¾ 4: 1 5: 1½ 6: 2	"Blank": no code single phase ODP motor 3: 3 phase ODP motor T: 1 phase EFC 3T: 3 phase TEFC

Note: Motor mounted units available in gear sizes 3 thru 6.  
Maximum rated pump speed 1725 RPM.

# Cast Iron Series



Model Number: PCN6



Model Number: MCN4A43T

## Features

- ✦ Closed coupled to NEMA spec. motors . . . . . Compact size/multiple options
- ✦ Rugged cast iron construction . . . . . Suitable for heavy-duty lubricating fluid applications
- ✦ Mechanically sealed . . . . . Superior chemical resistance, trouble-free operation
- ✦ Standard flush ports . . . . . Allows for prefill and decontamination of chemicals on elastomers and seal faces
- ✦ Bi-rotational . . . . . Allows reversal of the direction of flow
- ✦ Optional adjustable relief valve . . . . . Safeguards against pressure buildup or used as a metering device

## Benefits

## MODEL ORDERING CODES AND OPTIONS

Example Model: **MCN5VB6T**

(1) **M**      (2) **C**      (3) **N**      (4) **5**      (5) **V**      (6) **B**      (7) **6**      (8) **T**

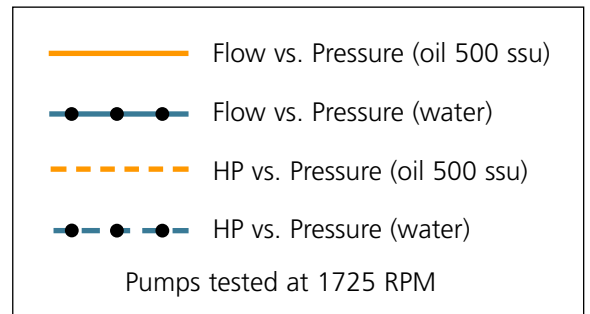
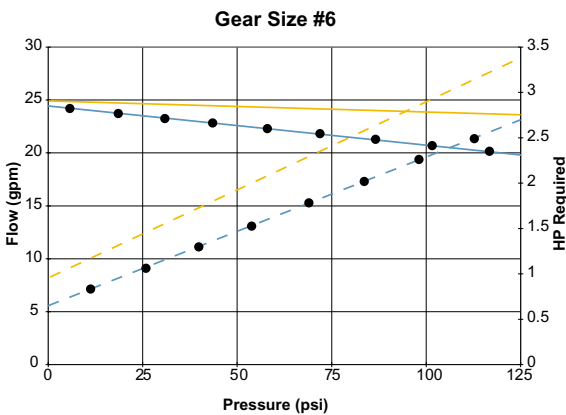
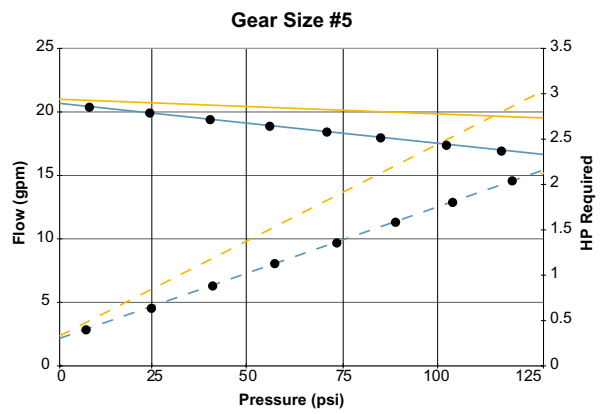
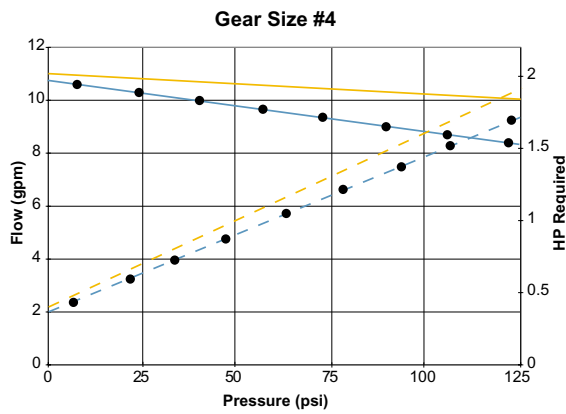
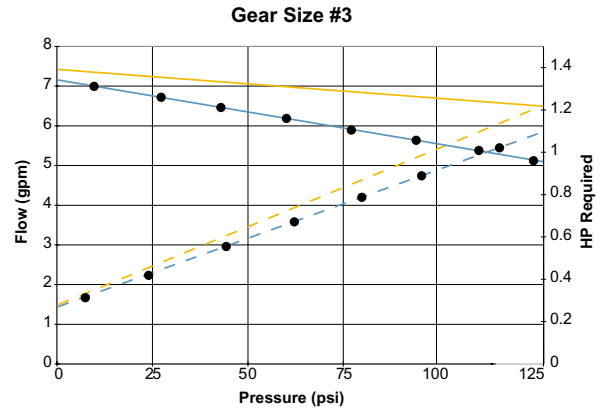
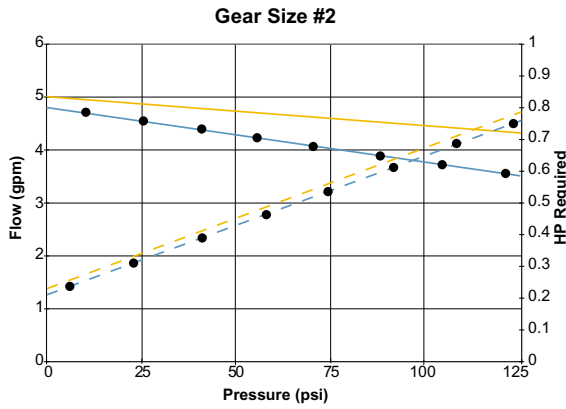
1st	2nd	3rd	4th	5th	6th	7th	8th
Mounting	Material	Seal (Mech)	Gear Size (Ports)	Options	Motor Mounted Only		
					Brackets	HP	Type
P: Pedestal M: Motor Mount	C: Cast Iron	N: Buna Nitrile V: Viton	2: ¼" 3: ⅜" 4: ½" 5: ¾" 6: 1"	V: Relief Valve	A: 56C B: 56C/145TC C: 182/184TC	1: ½ 2: ⅓ 3: ¼ 4: 1 5: 1½ 6: 2 7: 3	"Blank": no code single phase ODP motor 3: 3 phase ODP motor T: 1 phase TEFC 3T: 3 phase TEFC

Note: Maximum rated pump speed 1725 RPM.

# Performance Data—SherTech Gear Pumps

## 316 Stainless Steel Series, Bronze Series and Cast Iron Series

(Non "AK" Series)



(graphs continued on back)

# Performance Data - "AK" Series Gear Pumps Only

(Consult factory for higher pressure curves)

(continued from page 7)

