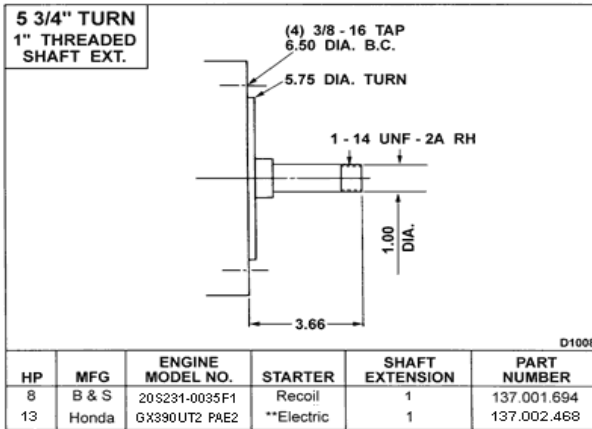
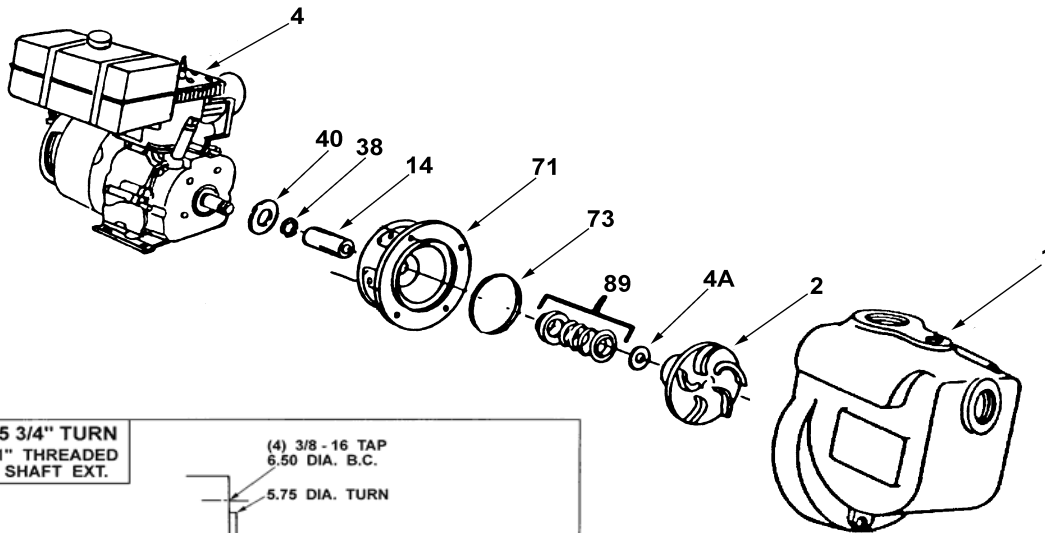


*Engine is for illustrative puposes only and is not available.
Pump is only available as a pump kit less engine and requires a 1" threaded shaft as shown in drawing.*

PEI_{CL}: EXEMPT

| Engine HP Required | Pump Head in PSI at Various GPM | | | | | |
|--------------------|---------------------------------|---------|---------|---------|---------|---------|
| | 50 GPM | 100 GPM | 150 GPM | 200 GPM | 300 GPM | 400 GPM |
| 11 | 50 | 50 | 50 | 40 | 30 | 20 |

PUMP NO. 75 • Iron • Less Engine



Engine is for illustrative puposes only and is not available.
Pump is only available as a pump kit less engine and requires a 1" threaded shaft

| KEY NO. | PART NAME | PUMP NO. 75-LE |
|---------|--|----------------|
| 1 | CASE, IRON, 3 X 3 NPT | 130.000.295X |
| 2 | IMPELLER, IRON, 1" THREADED, SEMI-OPEN | |
| | 5.50" DIA | 131.000.302 |
| 4 | ENGINE | Not Available |
| 14* | SHAFT SLEEVE, STAINLESS | 110.000.175 |
| 38* | O-RING, SHAFT | 116.000.117 |
| 40* | FLINGER, STAINLESS | 104.000.165 |
| 71 | ADAPTER, IRON | 132.000.188 |
| 73* | GASKET, CASE | 116.000.146 |
| 89* | 1 1/4" SEAL: | |
| | TYPE 21, BN-CARB/CM | 101.000.194 |
| -- | REPAIR KIT: | |
| | BN-CARB/CM SEAL | 118.000.220 |

* DENOTES COMPONENTS INCLUDED IN REPAIR KIT.