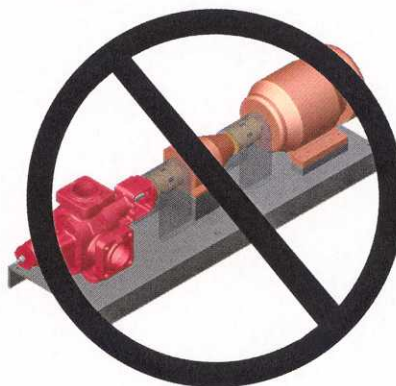
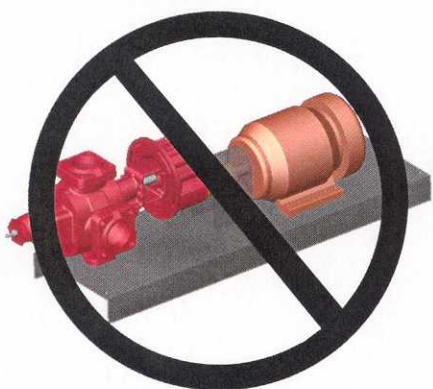
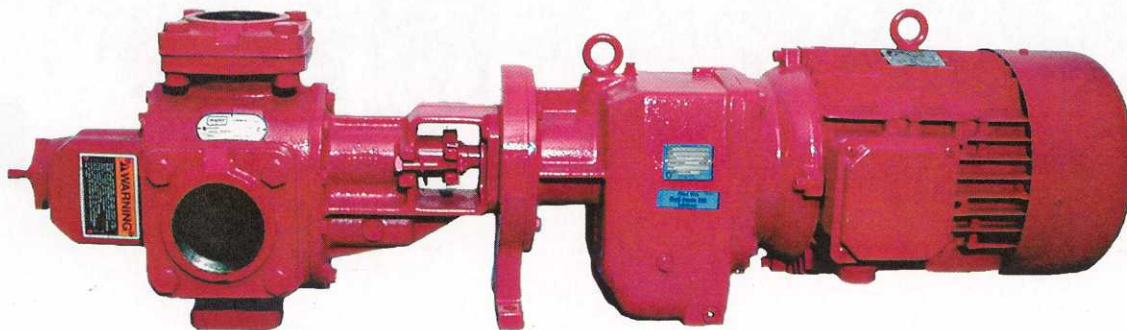


Roper Pumps

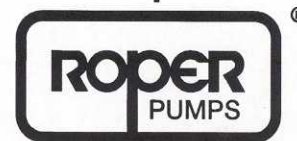
CCD

Series



Close Coupled Drives

Drive Your Pump Safer, and Save More Time, Money, and Space



The leading force behind liquids.

Key Features

- Complete Drive Package
- Attaches to a Standard 3600 BH Pump
- AGMA 1.4 Service Factor for 24 / 7 Duty
- No Snag Point; No Guard Required in Most Applications *
- No Baseplate Required on Integral Motor or C-face type inputs
- Reducer Oil Filled & Ready to Use

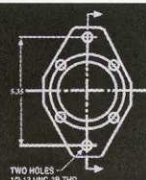
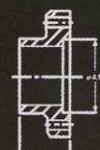
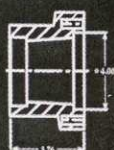
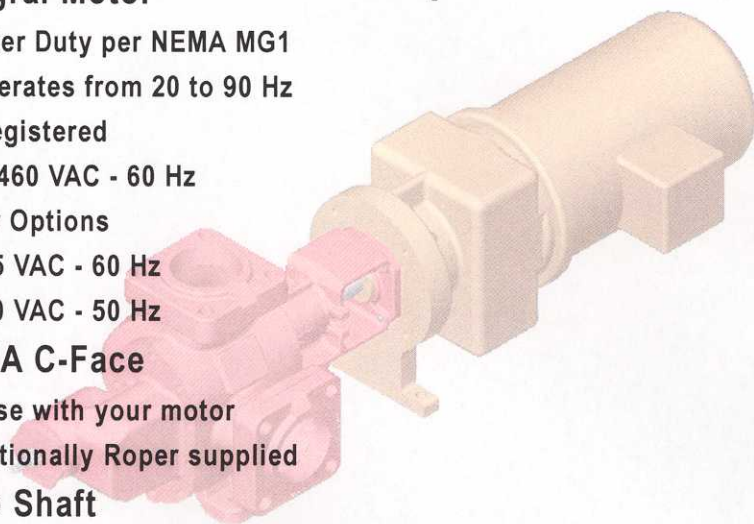
* System Designer must determine if guards are required for application

Input Available As: Integral Motor

- Inverter Duty per NEMA MG1
 - Operates from 20 to 90 Hz
- UL Registered
- 230 / 460 VAC - 60 Hz
- Motor Options
 - 575 VAC - 60 Hz
 - 400 VAC - 50 Hz

NEMA C-Face

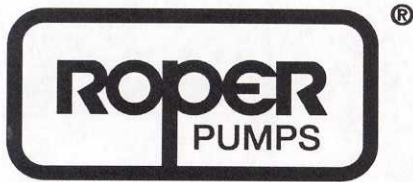
- For use with your motor or Optionally Roper supplied Male Shaft



FOUR HOLES EQUALLY SPACED @ 90° 1/2-13 UNC-2B THD

TWO HOLES 1/2-13 UNC-2B THD

TWO HOLES 1/2-13 UNC-2B THD



Roper Pump Company
 P.O. Box 269 • Commerce, GA 30529 USA
 Toll Free: 1-800-876-9160
 Tele: 706-335-5551 • Fax: 706-335-5490
 sales@roperpumps.com

Visit Us On The WorldWide Web
 www.roperpumps.com

3611-3622 & 3711-3722; Use CCD/36S Drive

Input Type			Horsepower	Nominal Output Speed													
Integral Gear Motor	NEMA C-Face	Male Input Shaft		100	150	200	250	300	350	400	450	500	550	600	650	700	
90S/4	N140	W	1.5	22F	22F												
			Ratio	16.8	10.9												
			Exact O/P Spd	99	152												
90L/4	N140	W	2	22F	22F	22F	22F										
			Ratio	16.8	10.9	8.48	6.86										
			Exact O/P Spd	99	152	196	242										
100L/4	N180	W	3.0	22F	22F	22F	22F	22F	22F								
			Ratio	16.8	10.9	8.48	6.86	5.79	5.18	4.62							
			Exact O/P Spd	102	157	201	249	294	329	369							
100L/40	N180	W	5.0	22F	22F	22F	22F	22F	22F	22F							
			Ratio	10.9	8.48	6.86	5.79	5.18	4.62	3.97	3.53						
			Exact O/P Spd	157	201	251	298	333	373	435	489						
132S/4	N210	W	7.5				32F	32F	32F	32F	32F	41F	41F	32F			
			Ratio				6.74	5.70	5.28	4.43	3.75	3.42	3.08	2.96			
			Exact O/P Spd				257	304	329	392	463	507	563	586			
132M/4	N210	W	10.0				32F	32F	32F	32F	41F	41F	32F	41F			
			Ratio				5.70	5.28	4.43	3.75	3.08	2.96	2.50				
			Exact O/P Spd				304	329	392	463	563	586	694				
160M/4	N250	W	15.0					42F	42F	42F	42F	42F	42F	41F			
			Ratio					4.79	3.89	3.50	3.21	3.02	2.50				
			Exact O/P Spd					367	452	503	548	583	704				
160L/4	N250	W	20.0					42F	42F	42F	42F	42F	41F				
			Ratio						3.89	3.50	3.21	3.02	2.50				
			Exact O/P Spd						452	503	548	586	704				

3648; Use CCD/36M Drive

3635-3658 & 3735-3758; Use CCD/36L Drive

Input Type			Horsepower	Nominal Output Speed													
Integral Gear Motor	NEMA C-Face	Male Input Shaft		100	150	200	250	300	350	400	450	500	550	600	650	700	
100L/40	N180	W	5.0	32F	32F	32F	32F	32F	32F								
			Ratio	16.7	11.7	8.36	6.74	5.70	5.28								
			Exact O/P Spd	104	147	206	256	303	327								
132S/4	N210	W	7.5	42F	32F	32F	32F	32F	32F	32F							
			Ratio	17.7	11.7	8.36	6.74	5.70	5.28	4.43							
			Exact O/P Spd	98	148	208	257	304	329	392							
132M/4	N210	W	10.0	42F	32F	32F	32F	32F	32F	32F	32F						
			Ratio	17.7	11.7	8.36	6.74	5.70	5.28	4.43	3.75						
			Exact O/P Spd	98	148	208	257	304	329	392	463						
160M/4	N250	W	15.0	42F	42F	42F	42F	42F	42F	42F	51F	42F	51F	51F			
			Ratio	12.3	8.50	6.65	5.75	5.10	4.58	4.04	3.50	3.31	2.86				
			Exact O/P Spd	143	207	265	306	345	384	436	503	532	615				
160L/4	N250	W	20.0	42F	42F	42F	42F	42F	42F	51F	42F	51F	51F	51F	51F		
			Ratio	8.50	6.65	5.75	5.10	4.58	4.04	3.50	3.31	2.86	2.5				
			Exact O/P Spd	207	265	306	345	384	436	503	532	615	704				
180M/4	N280	W	25.0				52	52	52	52	52	52	51F	51F	52	51F	
			Ratio				7.27	5.79	5.08	4.38	4.08	3.40	3.31	2.86	2.78	2.50	
			Exact O/P Spd				243	305	347	403	433	519	533	617	635	706	
180L/4	N280	W	30.0				52	52	52	52	52	51F	51F	52	51F		
			Ratio				5.79	5.08	4.38	4.08	3.40	3.31	2.86	2.78	2.50		
			Exact O/P Spd				305	347	403	433	519	533	617	635	706		
200L/4	N320	W	40.0						62F	62F	62F	62F					
			Ratio						4.9	4.56	3.91	3.30	2.97				
			Exact O/P Spd						357	386	450	533	593				
225S/4	N320	W	50.0								62F	62F	62F				
			Ratio							3.91	3.30	2.97					
			Exact O/P Spd							451	535	594					

Note: Data based on 60 hertz.

