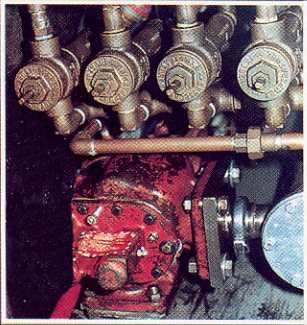
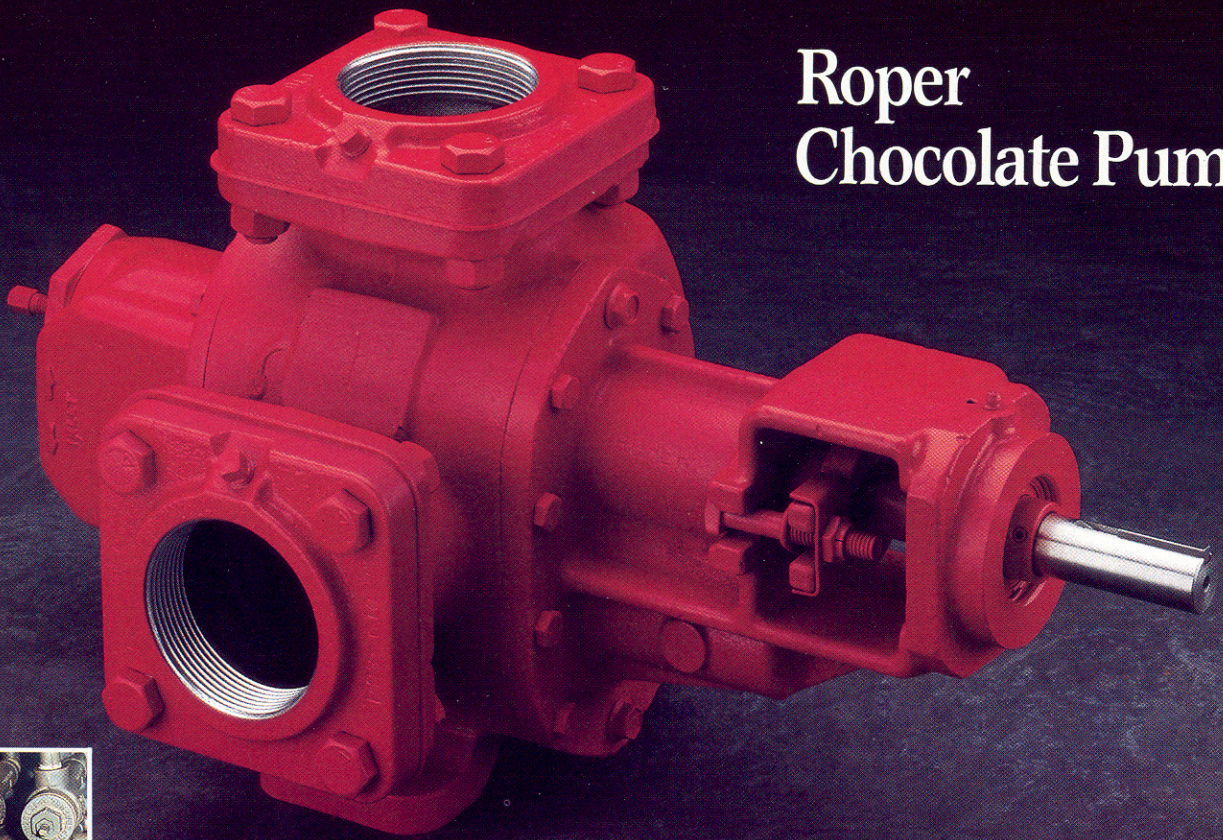


# Roper Chocolate Pump



Roper's chocolate pump is designed to accommodate a wide variety of chocolate applications. In chocolate factories throughout the country the Roper chocolate pump handles chocolates ranging from chocolate liqueur to dark chocolate without discoloring the product.

Iron bearings and PTFE packing in the Roper chocolate pump increase service life and efficiency. To find out more about the Roper chocolate pump, contact your nearest Roper distributor or the Roper factory.

\*When selecting pumps for food process service refer to the applicable codes.

## Advantages

- Iron bearings prevent chocolate discoloration.
- Bearings with large square grooves allow better circulation of product to prevent build-up.
- Lubricant pockets at each shaft end allow maximum lubrication to the bearings.
- A lantern ring in the packing prevents air from being pulled through the packing area and hardening chocolate.
- Undersized gears provide extra clearance for handling chocolate.

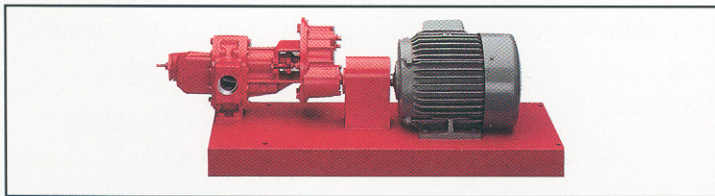


# Performance Chart

SIZE	RPM		50 RPM					100 RPM					150 RPM					200 RPM			
	PSI	SSU	500	1000	10,000	25,000	40,000	500	1000	10,000	25,000	40,000	500	1000	10,000	25,000	40,000	500	1000	10,000	20,000
3611	25	GPM HP	5.5 1	5.5 1	5.5 1	5.5 1	5.5 1	11 1	11 1	11 1	11 1	11 1	16.5 1	16.5 1	16.5 1	16.5 1.5	16.5 1.5	22 1	22 1	22 1.5	22 1.5
	50	GPM HP	5 1	5.5 1	5.5 1	5.5 1	5.5 1	10.5 1	11 1	11 1	11 1	11 1	16 1	16.5 1	16.5 1.5	16.5 1.5	16.5 1.5	21.5 1.5	22 1.5	22 1.5	22 2
	100	GPM HP	4.5 1	4.9 1	5.5 1	5.5 1	5.5 1	10 1	10.4 1	11 1.5	11 1.5	11 1.5	15.5 1.5	15.9 1.5	16.5 2	16.5 2	16.5 2	21 2	21.4 2	22 3	22 3
	125	GPM HP	4 1	4.8 1	5.5 1	5.5 1	5.5 1	9.5 1	10.3 1.5	11 1.5	11 1.5	11 1.5	15 2	15.8 2	16.5 2	16.5 2	16.5 3	20.5 3	21.3 3	22 3	22 3
3617	25	GPM HP	7.8 1	8 1	8.5 1	8.5 1	8.5 1	16.3 1	16.5 1	17 1	17 1	17 1	24.8 1	25 1	25.5 1.5	25.5 1.5	25.5 1.5	33.3 1.5	33.5 1.5	34 2	34 2
	50	GPM HP	6.8 1	7.6 1	8.5 1	8.5 1	8.5 1	15.3 1	16.1 1	17 1.5	17 1.5	17 1.5	23.8 1.5	24.6 1.5	25.5 2	25.5 2	25.5 2	32.3 2	33.1 2	34 3	34 3
	100	GPM HP	5.5 1	6.6 1	8.1 1	8.5 1	8.5 1	14 1.5	15.1 1.5	16.6 2	17 2	17 2	22.5 2	23.6 2	25.1 3	25.5 3	25.5 3	31 3	32.1 3	33.6 5	34 5
	125	GPM HP	4.8 1	6 1	8 1	8.5 1.5	8.5 1.5	13.3 1.5	14.5 1.5	16.5 2	17 2	17 2	21.8 3	23 3	25 3	25.5 3	25.5 3	30.3 3	31.5 5	33.5 5	34 5
3622	25	GPM HP	10.6 1	11 1	11 1	11 1	11 1	21.6 1	22 1	22 1	22 1	22 1	32.6 1	33 1.5	33 1.5	33 1.5	33 1.5	43.6 1.5	44 1.5	44 2	44 2
	50	GPM HP	10.1 1	10.4 1	11 1	11 1	11 1	21.1 1.5	21.4 1.5	22 1.5	22 1.5	22 1.5	32.1 1.5	32.4 1.5	33 2	33 2	33 2	43.1 2	43.4 2	44 3	44 3
	100	GPM HP	9.1 1	9.8 1	11 1	11 1	11 1	20.1 2	20.8 2	22 2	22 2	22 2	31.1 3	31.8 3	33 3	33 3	33 3	42.1 5	42.8 5	44 5	44 5
	125	GPM HP	8.5 1.5	9.3 1.5	11 1.5	11 1.5	11 1.5	19.5 2	20.3 2	22 3	22 3	22 3	30.5 3	31.3 5	33 5	33 5	33 5	41.5 5	42.3 5	44 5	44 5
3635	25	GPM HP	16.8 1	17 1	18.5 1	18.5 1	18.5 1	35.3 1	35.5 1	37 2	37 3	37 3	53.8 1.5	54 1.5	55.5 5	55.5 5	55.5 5	72.3 3	72.5 3	74 5	74 7.5
	50	GPM HP	14.6 1	15.4 1	16.8 1	18.5 1	18.5 1	33.1 1.5	33.9 1.5	35.3 3	37 3	37 5	51.6 2	52.4 2	53.8 5	55.5 5	55.5 5	70.1 5	70.9 5	72.3 7.5	74 7.5
	100	GPM HP	9.8 1.5	11.5 1.5	14.6 1.5	18.5 1.5	18.5 1.5	28.3 3	30 3	33.1 5	37 5	37 5	46.8 5	48.5 5	51.6 7.5	55.5 7.5	55.5 7.5	65.3 7.5	67 7.5	70.1 10	74 10
	125	GPM HP	7.5 2	9.3 2	13.5 2	18.5 2	18.5 2	26 3	27.8 3	32 5	37 5	37 5	44.5 5	46.3 5	50.5 7.5	55.5 7.5	55.5 7.5	63 7.5	64.8 10	69 10	74 10
3658	25	GPM HP	28.8 1	29.1 1	30.5 1	30.5 1	30.5 1	59.3 1.5	59.6 1.5	61 3	61 3	61 3	89.8 2	90.1 3	91.5 5	91.5 5	91.5 7.5	120.3 5	120.6 5	122 7.5	122 7.5
	50	GPM HP	26.6 1.5	27.7 1.5	30.5 1.5	30.5 1.5	30.5 1.5	57.1 3	58.2 3	61 5	61 5	61 5	87.6 3	88.7 5	91.5 7.5	91.5 7.5	91.5 10	118.1 7.5	119.2 7.5	122 10	122 10
	100	GPM HP	22 3	24.5 3	28.6 3	30.5 3	30.5 3	52.5 5	55 5	59.1 7.5	61 7.5	61 7.5	83 7.5	85.5 7.5	89.6 10	91.5 10	91.5 10	113.5 10	116 10	120.1 10	122 15
	125	GPM HP	19.5 3	22.6 3	27.9 3	30.5 3	30.5 3	50 5	53.1 5	58.4 7.5	61 7.5	61 7.5	80.5 7.5	83.6 10	88.9 10	91.5 15	91.5 15	111 15	114.1 15	119.4 15	122 15

Additional sizes available  
HP figures indicate the lowest horsepower motor that should be used to operate the pump.

## Baseplate Units



## Materials Chart

	HOUSING	GEARS	BEARINGS	SHAFTS
STANDARD	Iron	Hardened Iron Alloy	Iron	Steel
AVAILABLE	Ductile Iron*	Stainless Steel*	Carbon	Stainless Steel

\*Not available for all sizes



The leading force behind liquids.™

**Roper Pump Company**  
 Commerce, Georgia 30529  
 WATS 1-800-944-6769  
 In GA (706) 335-5551  
 FAX (706) 335-5505