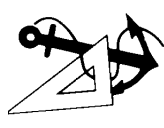
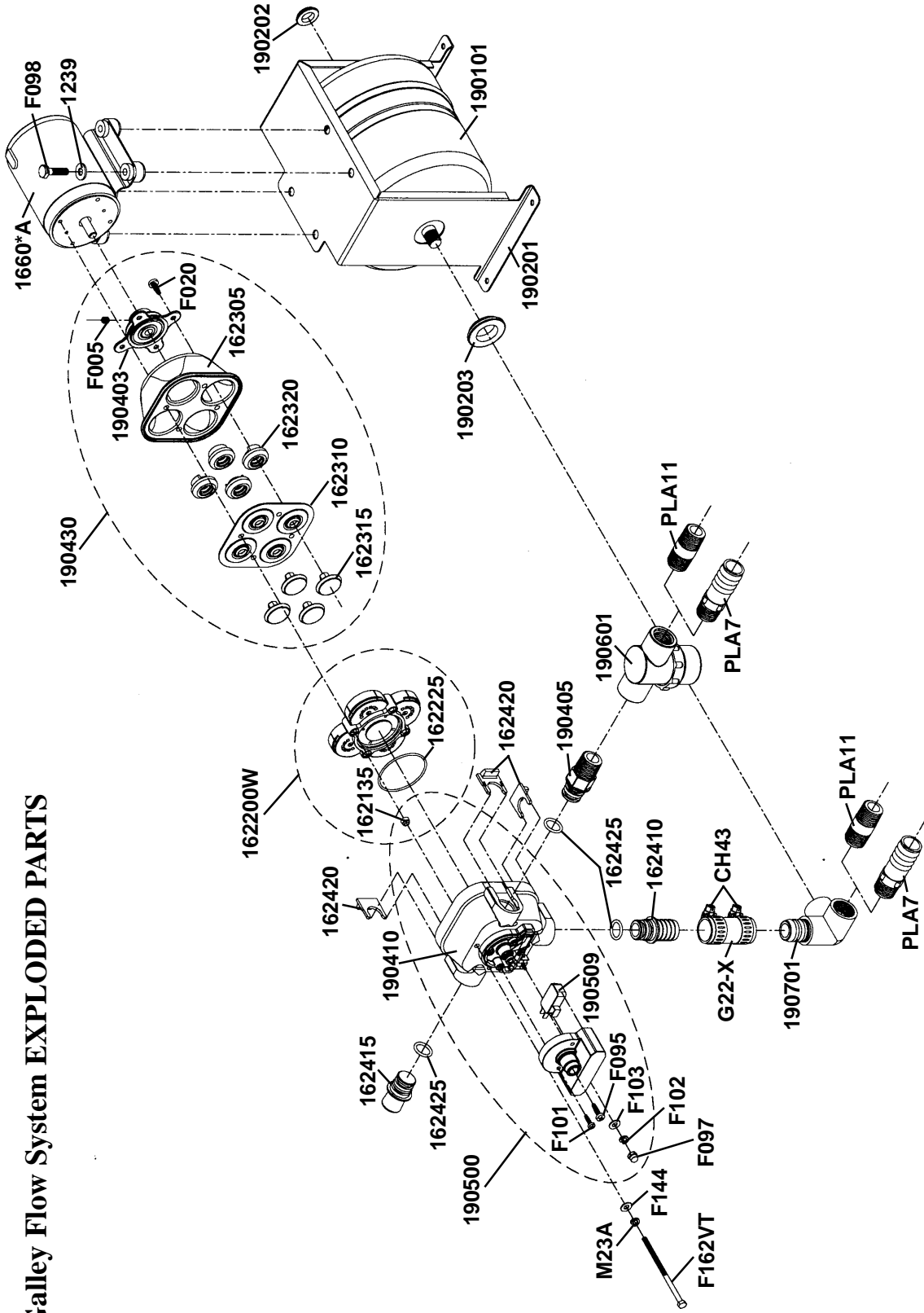


Galley Flow System EXPLODED PARTS



RARITAN
Engineering Company, Inc.

530 Orange Street, P.O. Box 1157, Millville, NJ 08332 USA
 Telephone: 856-825-4900 FAX: 856-825-4409
 www.raritaneng.com
 Southern Office and Plant:
 3101 SW Second Avenue, Fort Lauderdale, FL 33315 USA
 Telephone: 954-525-0378 FAX: 954-764-4370

Specifications Subject to Change Without Notice. Printed in U.S.A.

L344 0702wmt

Galley Flow System PARTS LIST

(Quantities are one unless otherwise indicated)

Before ordering, locate required part on exploded parts view to be sure you are ordering the correct part.

| <u>Part No.</u> | <u>Description</u> | <u>Part No.</u> | <u>Description</u> |
|------------------------|---|------------------------|--|
| 1239 | 1/4" Flat S/S Washer (4) | F101 | 6-32 x 3/8 Hex Hd S/S Screw (2) |
| 1660*A | Galley Flow Motor | F102 | #6 Lockwasher S/S |
| 162135 | Cone Seal (4) | F103 | #6 Flat Washer S/S |
| 162225 | O-Ring | F144 | #10L 18-8 S/S Washer (4) |
| 162305 | Lower Housing includes 162315 (4) | F162VT | Mounting Bolt (4) |
| 162310 | Diaphragm includes 162315 (4) | G22-X | 3/4 NYL Reinforced Hose (sold by the foot) |
| 162315 | Piston (4) | M23A | Lockwasher (4) |
| 162320 | Piston Seat (4) includes 162315 (4) | PLA7 | Male Adapter 1/2 MPT x 3/4 Barb |
| 162410 | 3/4" Hose Barb Straight | PLA11 | 1/2 x 2" Nipple |
| 162415 | Plug Fitting | 162200W | Middle Housing Assembly |
| 162420 | Fitting Clip (3) | 190400 | Galley Flow Inlet Pump Assembly includes 162200W, 190410, 190430 |
| 162425 | O-Ring (3) | 190403 | Bearing Plate Assembly includes 162315 (4) and F005 |
| 190101 | Tank: .8 Gallon Steel with Internal Bladder | 190410 | Upper Housing Assembly includes 162135 (4) |
| 190201 | Mounting Frame for Tank | 190430 | Lower Housing Assembly |
| 190202 | Rubber Grommet | 190450 | Pump and Pressure Switch Assembly includes 162200W, 162420 (3), 190430, 190500 |
| 190203 | Rubber Grommet | 190500 | Galley Flow Pressure Switch and Upper Housing Assembly |
| 190509 | Galley Flow Micro Switch | 1910* | Galley Flow Pump with Motor, In-Line Strainer and Pressure Switch |
| 190601 | In-Line Strainer, Female | DIAPUMPRK | Diaphragm Pump Repair Kit includes 162200W, 162310, 162315 (4), 162425 (3) |
| 190701 | Side ell Sub-Assy. for Tank | | |
| CH43 | Hose Clamp #10 43H Series (2) | | |
| F005 | 1/4-20 x 5/16 SS Hex SOC | | |
| F020 | #10 x 1/2 STSM Screw (4) | | |
| F095 | #8 x 3/4 Phil Pan Screw | | |
| F097 | Acorn Nut for Wire | | |
| F098 | 1/4-20 x 1 Hex Hd Screw (4) | | |

** Specify Voltage (12V, 24V, 32V)