

CHEMSTEEL

S(M) 104 & S(M) 106 METALLIC EXPLODED

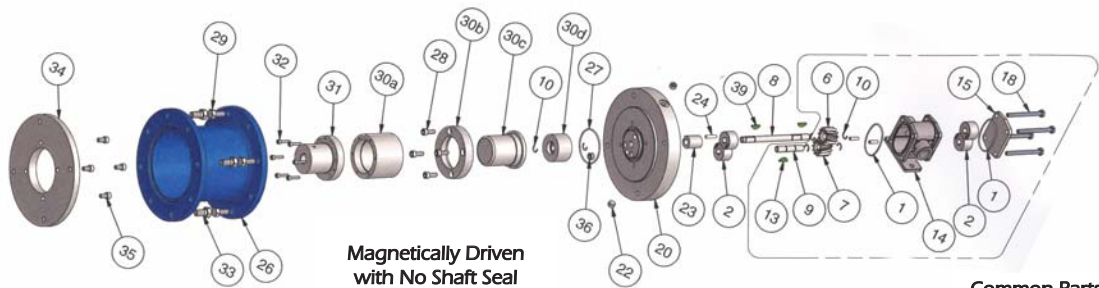
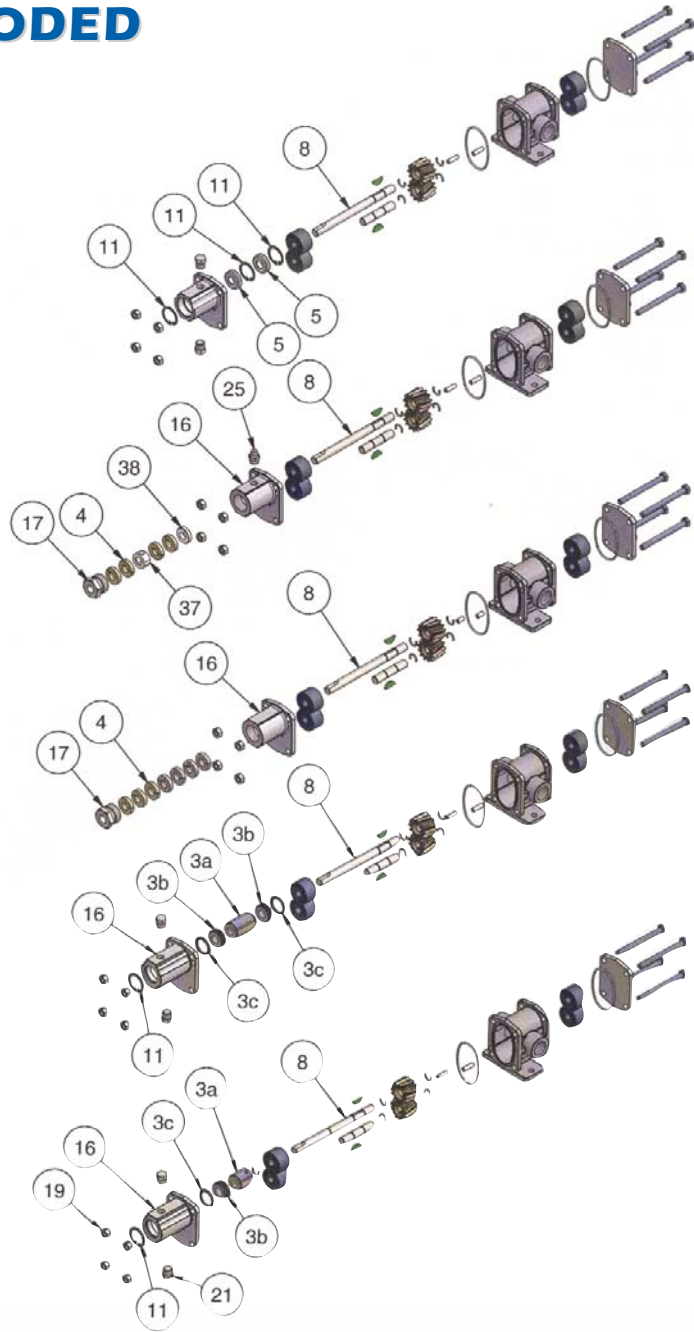
Shaft Seal Code "L"
Two Lip Seals

Shaft Seal Codes "R", "S" & "T"
Packing with Latern Ring

Shaft Seal Codes "N", "P" & "Q"
Packing

Shaft Seal Code "H" & "G"
Double Mechanical Seals

Shaft Seal Code "A", "B", "C", "D", "F" & "J"
Single Mechanical Seals



Magnetically Driven
with No Shaft Seal

Common Parts