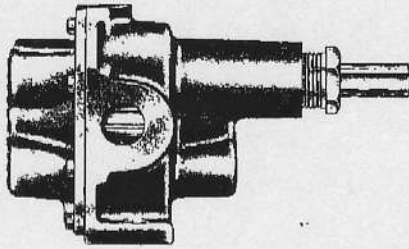




OBERDORFER BRONZE ROTARY GEAR PUMP PPS PLASTIC GEARS CARBON BEARINGS

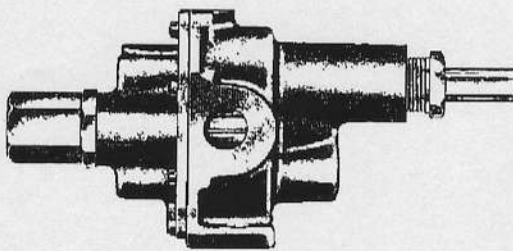
**MODEL
40001G
40001GR**

PIPE SIZE 1/2



MODEL 40001G

PIPE SIZE 1/2



MODEL 40001GR
(With By-Pass)

FEATURES

- PPS Plastic Gears
- Lower Noise Level
- Bronze Corrosion Resistant Castings
- Stainless Steel Shafts & Fasteners
- Formed Ring Seal Packing (Lip & Mechanical Seals on Special Order)
- Heavy Duty Carbon Bearings (Self Lubricating)
- Positive Displacement Flow

CAPACITY – WATER 60°F

R.P.M.	FT. HD. P.S.I.	0	46	92	138	184	231
400	G.P.M.	2.30	2.00	1.75	1.55	1.30	1.10
	H.P.	.10	.15	.20	.25	.32	.40
	MOTOR	1/8	1/8	1/4	1/4	1/3	1/2
600	G.P.M.	3.45	3.20	2.95	2.75	2.50	2.30
	H.P.	.15	.20	.25	.35	.40	.60
	MOTOR	1/4	1/4	1/4	1/3	1/2	1/2
800	G.P.M.	4.65	4.18	4.10	3.90	3.70	3.50
	H.P.	.20	.22	.29	.45	.64	.86
	MOTOR	1/4	1/4	1/3	1/2	3/4	1
1000	G.P.M.	5.88	5.65	5.40	5.18	4.95	4.76
	H.P.	.22	.25	.30	.46	.65	.75
	MOTOR	1/4	1/4	1/3	1/2	3/4	3/4
1200	G.P.M.	7.10	6.85	6.60	6.35	6.12	5.90
	H.P.	.25	.30	.40	.60	.75	.97
	MOTOR	1/4	1/3	1/2	3/4	3/4	1
1800	G.P.M.	9.70	9.45	9.20	8.95	8.72	8.50
	H.P.	.30	.39	.60	.80	1.05	1.30
	MOTOR	1/3	1/2	3/4	1	1	1 1/2
1725	G.P.M.	10.56	10.33	10.10	9.85	9.63	9.42
	H.P.	.50	.75	.90	1.20	1.50	1.75
	MOTOR	1/2	3/4	1	1 1/2	1 1/2	2

H.P.=ACTUAL HORSEPOWER
MOTOR=CONVENIENT FRACTIONAL SIZES
G.P.M.=GALLONS PER MINUTE
P.S.I.=LBS. PER SQUARE INCH PRESSURE
FT. HD.=EQUIVALENT PRESSURE IN FEET OF WATER
R.P.M.=REVOLUTIONS PER MINUTE

PLASTIC GEARS

Reinforced and teflon lubricated polyphenylene sulphide plastic gears offer a wide range of chemical compatibility, lower noise level, physical stability and higher temperature application potential than known conventional plastics to date.

DRIVE

Either direct drive with flexible coupling or pulley drive can be used. Make sure both flexible coupling halves are properly aligned. When using pulley do not overtighten belt:— Also, to absorb belt side thrust at higher pressures and larger size pumps, an external ball bearing support is recommended—consult factory.

LIQUIDS AND TEMPERATURE

Service life will be increased substantially if liquid pumped is clean and has lubricity value. These pumps have extremely close tolerances. Fine abrasives like sand, silt, or powders in suspension destroy pumping ability.

Liquids compatible with bronze, PPS plastic and stainless steel can be pumped providing proper seal has been specified (see chemical compatibility table or check factory). When possible flush pump after each usage.

Temperature extremes are detrimental to service life and should be avoided. Basic materials of construction allow temperature range of -40 to 250°F. Some lip and mechanical seal elastomers have limit of 212°F. (see engineering data or check factory). Freezing liquid in pump can deform or damage pump.

SUCTION LIFT

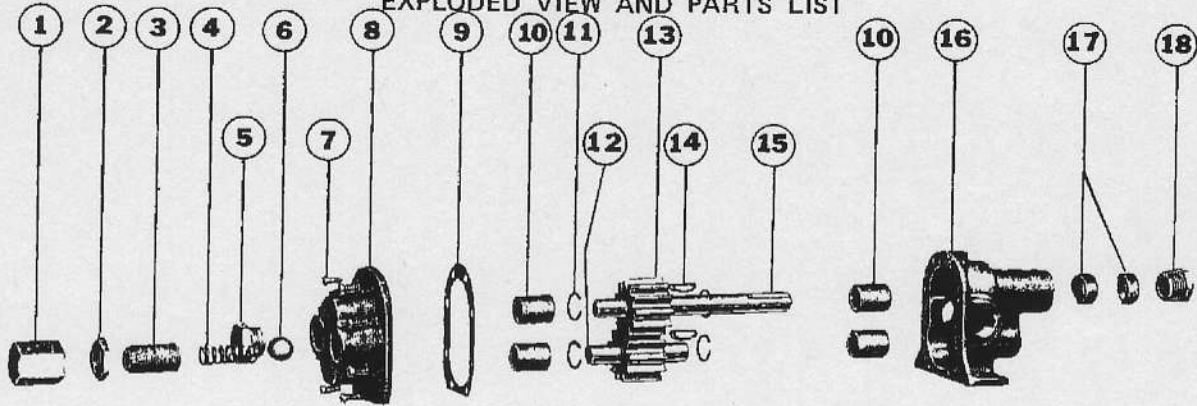
Close internal tolerances and the positive pumping action make the rotary gear pump capable of lifting water on the suction side as high as 20 feet. Though gear pumps are self priming a foot valve is recommended. If possible, wet the gears with liquid to be pumped for first dry start. Liquid retained in system and gear chambers serves to "wet" on subsequent starts.

OBERDORFER PUMP DIVISION • SYRACUSE, NEW YORK 13221 • PHONE (315) 437-0361

**MODEL
40001G
40001GR**

**OBERDORFER
BRONZE ROTARY GEAR PUMP
PPS PLASTIC GEARS
CARBON BEARINGS**

EXPLODED VIEW AND PARTS LIST



REPAIR KIT NO. INCLUDES SHADED PARTS	PUMP NO.	1	2	3	4	5	6	7	8	9	10	11*	12*	13*	14*	15*	16	17	18
		VALVE NUT 1 Req'd	LOCKNUT 1 Req'd	ADJ SCREW 1 Req'd	SPRING 1 Req'd	PLUG NUT 1 Req'd	BALL 1 Req'd	SCREW 8 Req'd	COVER 1 Req'd	GASKET A5227	BEARING 4 Req'd	RETAINING RING A5385	IDLE SHAFT A5227	GEAR A7804	KEY A5123	DRIVE SHAFT A7731	BODY C5173	PACKING A5479	PACKNUT A1702
11122	40001G 40001GR	A5204	A5106	A5200	A5207	A5205	A5706	A5385 A5385	C5900 C5902	A5227 A5227	A5091 A5067	A5385 A5385	A7732 A7732	A7804 A7804	A5123 A5123	A7731 A7731	C5173 C5173	A5479 A5479	A1702 A1702

Available from factory as assemblies. Order by Assembly No.'s. as follows:
 32408 Drive Gear and Shaft Assembly includes items 11, 13, 14 and 15
 32410 Idle Gear and Shaft Assembly includes items 11, 12, 13 and 14

NOTE: RED FIBER WASHERS A8964 (NOT SHOWN).
 ONE EACH REQUIRED WITH PLUG NUT ITEM 5,
 LOCKNUT ITEM 2, AND VALVE NUT ITEM 1.

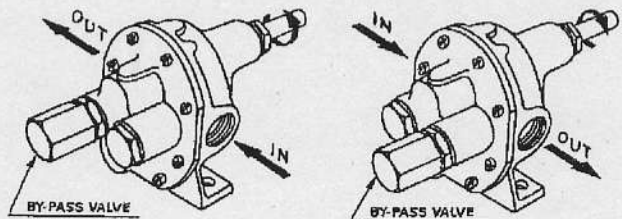
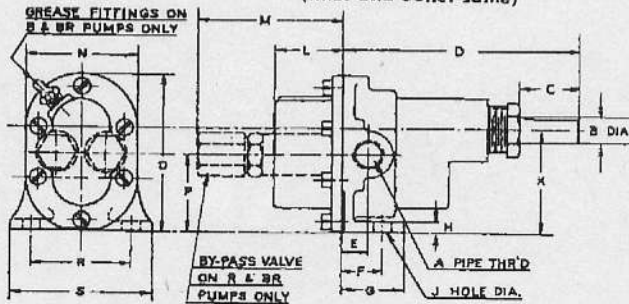
BY-PASS AND ROTATION

The pump by-pass is not intended to be a metering or flow control device. Its main purpose is to function as a discharge pressure relief when ball and spring tension is exceeded by discharge pressure. Overheating can occur within 5-10 minutes if the discharge line is completely shut off for extended periods.

Reversing rotation reverses "IN" and "OUT" ports and location of by-pass parts.

By-Pass is factory set at 50 p.s.i. To increase pressure turn by-pass valve adjusting screw in clockwise direction.

DIMENSIONS See letter A for pipe size
 (Inlet and outlet same)



PUMP NO.	A	B	C	C*	C**	D	E	F	G	H	J	K	L	M	N	O	P	R	S
40001G, 40001GR	1/2	5/8	1 1/8	1 13/16	1 1/8	5 7/16	11/16	7/8	1 7/16	1/4	13/32	2 5/8	1 7/16	3 1/8	2 3/4	4	1 7/8	2 7/8	3 3/4

C - For Packing Type Seal C* - For Lip Seal C** - For Mechanical Seal