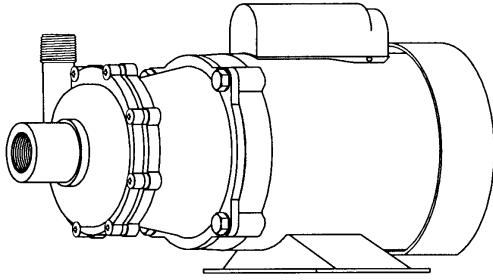




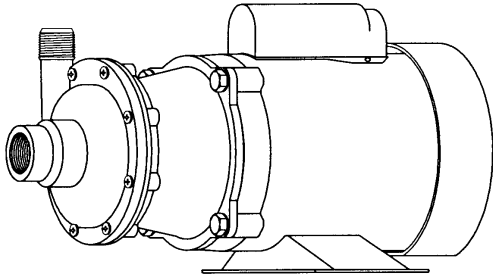
# MARCH PUMPS

1819 PICKWICK AVE., GLENVIEW, IL 60026-1306, U.S.A  
 PHONE: (847) 729-5300 - FAX: (847) 729-7062  
 WWW.MARCHPUMP.COM

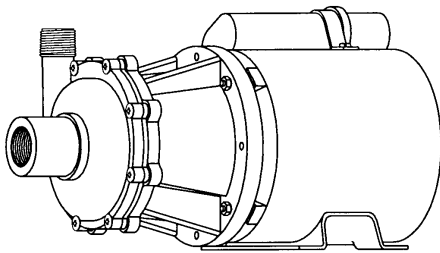
TE-5.5C-MD, TE-5.5C-MD-AC  
 TE-5.5K-MD, TE-5.5K-MD-AC  
 TE-5.5S-MD



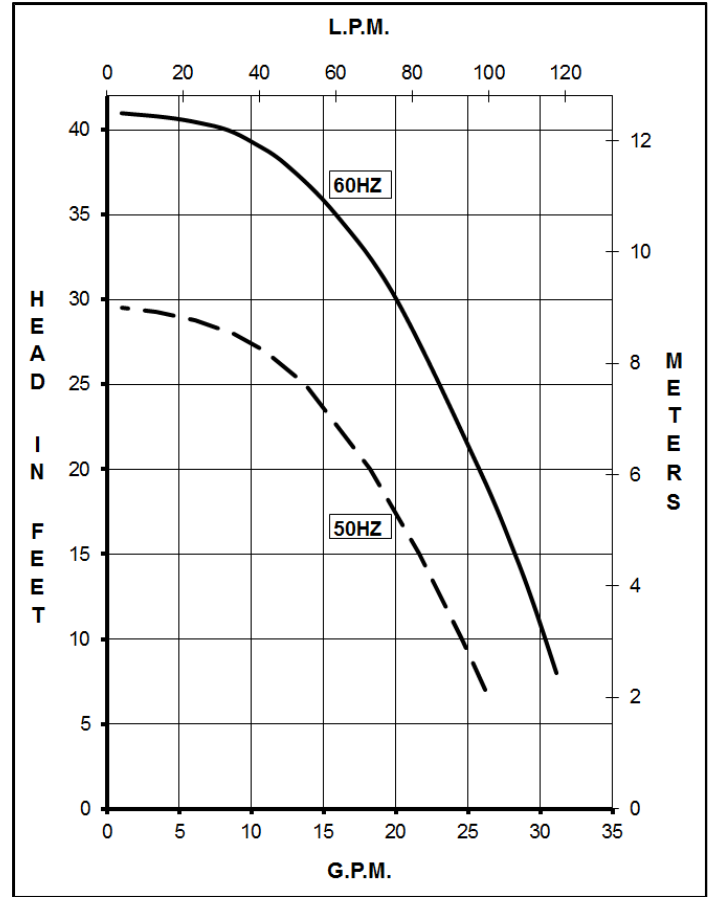
TE-5.5C-MD  
 TE-5.5K-MD



TE-5.5S-MD



TE-5.5C-MD-AC  
 TE-5.5K-MD-AC  
 (Air Cooled Motor)



**MODEL ABBREVIATIONS:**

C = Polypropylene, K = Kynar  
 S = Stainless Steel, MD = Magnetic Drive

**DESCRIPTION:**

Series 5.5 are centrifugal magnetic drive pumps, eliminating the need for a shaft seal. These pumps can be serviced with a screwdriver. Screws should be tightened in sequence and uniformly. Do not over tighten the screws or you may crush the plastic housing bosses. See the repair parts list for a breakdown of replacement parts.

**OPERATION:**

These pumps are not self-priming, lack a suction lift, and thus require a **flooded suction**. These pumps **cannot be run dry** because the impeller requires the liquid being pumped for lubrication. The direction of motor rotation should be clockwise when facing the inlet of the pump. For liquids with a specific gravity greater than water, have a higher viscosity, or for elevated temperatures, a trimmed impeller may be necessary. For application assistance, contact March Pump.

**ELECTRICAL:**

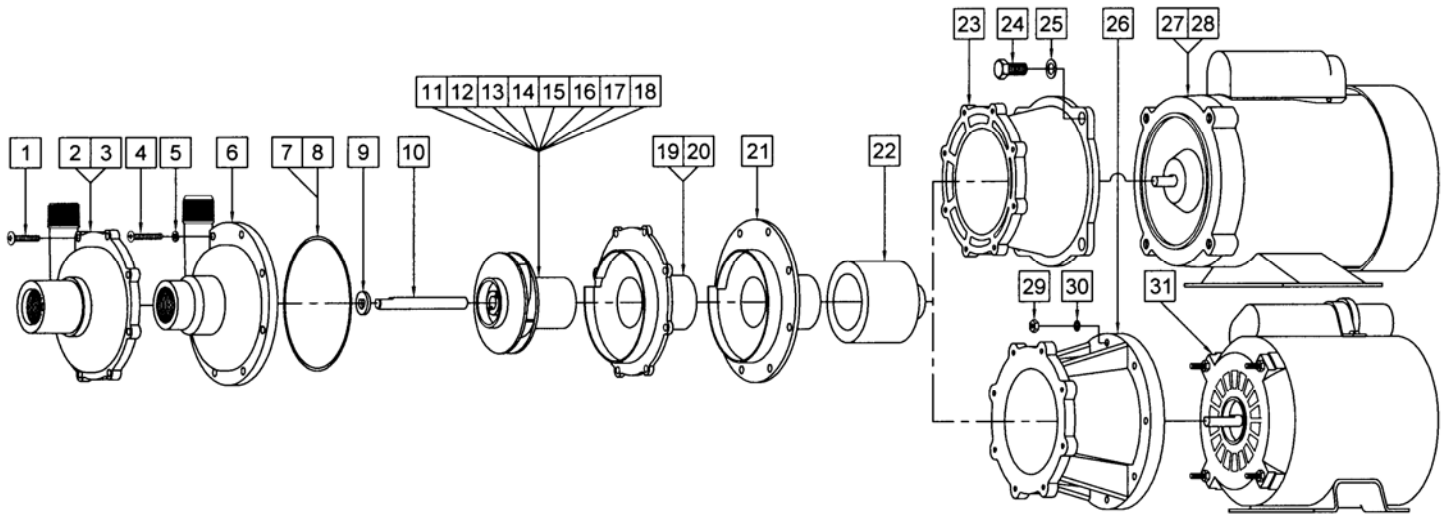
TE-5.5-MD-AC pumps are 115/230V, 1 phase, air cooled. TE-5.5-MD pumps are 115/230V, 1 phase or 230/460V, 3 phase, TEFC. The motors are U.L. listed and rated for continuous duty. Explosion proof and special voltage motors are available upon special order.

**NOTES:**

All specifications & data are based on pumping water & are intended as a guideline only. Specifications may vary with different motors.

SPECIFICATIONS			TE				
			5.5C-MD-AC	5.5K-MD-AC	5.5C-MD	5.5K-MD	5.5S-MD
Max Flow	50Hz	lpm	102		102		
	60Hz	gpm	30		30		
Max Head	50Hz	m	9		9		
	60Hz	ft (psi)	41 (17.7)		41 (17.7)		
Inlet			1" FPT		1" FPT		
Outlet			3/4" MPT		3/4" MPT		
Max Internal Pressure	psi		50	75	50	75	200
	bar		3.4	5	3.4	5	13
Max Liquid Temperature	°F		190	200	190	200	250
	°C		87	93	87	93	121
Packed Weight	kg/lbs		7/15.5	7.5/16	15.5/34.5	16/35	17.5/39
Motor Type			Air Cooled 1 Phase		TEFC 1 Phase		
50Hz	115V	Watts - Amps	281 - 2.9		290 - 4.4		
	230V	Watts - Amps	281 - 1.4		290 - 2.2		
		Kw - Rpm	0.149 - 2850		0.248 - 2850		
60Hz	115V	Watts - Amps	407 - 2.7		452 - 4.4		
	230V	Watts - Amps	407 - 1.4		452 - 2.2		
		Hp - Rpm	1/5 - 3450		1/3 - 3450		
Electrical Connection			Junction Box		Conduit Box		
Overall Pump Dimensions in	Height		6.95 / 17.6		7.79 / 19.7		
	Width		5.81 / 14.7		7.65 / 19.4		
	Inches / cm		12.89 / 32.7		14.25 / 36.1		
Motor Type			Air Cooled 1 Phase		TEFC 3 Phase		
50Hz	190V	Watts - Amps			350 - 1.2		
	380V	Watts - Amps			350 - 0.6		
		Kw - Rpm			0.186 - 2850		
60Hz	230V	Watts - Amps			425 - 1.2		
	460V	Watts - Amps			425 - 0.6		
		Hp - Rpm			1/3 - 3450		
Electrical Connection			Junction Box		Conduit Box		
Overall Pump Dimensions in	Height		6.95 / 17.6		7.34 / 18.6		
	Width		5.81 / 14.7		9.24 / 23.4		
	Inches / cm		12.89 / 32.7		15.07 / 38.2		

**NOTE:** When attaching the Drive Magnet (item 22) to the motor shaft, position the face of the Drive Magnet flush with the face of the Motor Bracket (item 23 or 26).



### REPAIR PARTS LIST

ITEM	DESCRIPTION	MATERIAL	SIZE (Inches)	QTY.	PART #	TE-5.5C-MD-AC	TE-5.5K-MD-AC	TE-5.5C-MD	TE-5.5K-MD	TE-5.5S-MD
1	Screw (Truss Hd)	Stainless	#10-32 x 1 Lg	8	0135-0180-1000	S	S	S	S	
2	Front Housing	Polypropylene		1	0151-0027-1000	S		S		
3	Front Housing	Kynar		1	0151-0044-1000		S		S	
4	Screw	Stainless	#10-32 x 1-1/8 Lg	8	0135-0181-1000					S
5	Lock Washer	Stainless	#10	8	0151-0016-1000					S
6	Front Housing	316 Stainless Steel		1	0151-0002-0000					S
7	"O" Ring	Viton	3/32 CS x 4-7/16 OD	1	0153-0015-1000	S	S	S	S	S
8	"O" Ring	Viton/Teflon	3/32 CS x 4-7/16 OD	1	0153-0024-1000	O	O	O	O	O
9	Thrust Washer	Ceramic		1	0155-0009-1000	S	S	S	S	S
10	Shaft	Ceramic		1	0153-0007-1000	S	S	S	S	S
11	Impeller	Polypropylene		1	0151-0029-0500	S		S		O
12	Impeller w/Carbon Bushing	Polypropylene		1	0151-0029-0800	O		O		O
13	Impeller w/Mica Teflon Bushing	Polypropylene		1	0151-0029-1300	O		O		O
14	Impeller	Kynar		1	0151-0046-0300		S		S	O
15	Impeller w/Carbon Bushing	Kynar		1	0151-0046-0500		O		O	O
16	Impeller w/Mica Teflon Bushing	Kynar		1	0151-0046-1100		O		O	O
17	Impeller w/Carbon Bushing	316 Stainless		1	0151-0001-0400					S
18	Impeller w/Mica Teflon Bushing	316 Stainless		1	0151-0001-0800					O
19	Rear Housing w/Thrust Washer	Polypropylene/Ceramic		1	0151-0028-0100	S		S		
20	Rear Housing w/Thrust Washer	Kynar/Ceramic		1	0151-0045-0100		S		S	
21	Rear Housing	316 Stainless Steel		1	0151-0003-0000					S
22	Drive Magnet			1	0151-0061-0200	S	S	S	S	S
23	Motor Bracket	Plastic		1	0151-0014-0100			S	S	S
24	Screw	Stainless	3/8-16 x 3/4 Lg	4	0155-0017-1000			S	S	S
25	Washer	Stainless	3/8 ID x 5/8 OD	4	0155-0019-1000			S	S	S
26	Motor Bracket	Plastic		1	0151-0041-0100	S	S			
27	Motor, TEFC, 115/230V, 1 Phase			1	0151-0015-1000			S	S	S
28	Motor, TEFC, 230/460V, 3 Phase*			1	0151-0039-1000			S	S	S
29	Hex Nut	Brass	#8-32	4	0410-0039-1000	S	S			
30	Lock Washer	Stainless	#8	4	0620-0010-1000	S	S			
31	Motor, Air Cooled, 115/230V, 1 Phase			1	0175-0087-1000	S	S			
W1	Wet End Kit (Items: 1, 2, 7, 9, 10, 11, 19)	See Individual Items		1	0151-0069-0100	S		S		
W2	Wet End Kit (Items: 1, 3, 7, 9, 10, 14, 20)	See Individual Items		1	0151-0070-0100		S		S	

NOTE: Contact Factory for other materials and/or parts not listed.

\*Not Shown

Legend: S = Standard, O = Optional

#### MATERIALS IN CONTACT WITH SOLUTION:

For TE-5.5C-MD, TE-5.5C-MD-AC: Polypropylene, Viton, Ceramic  
 For TE-5.5K-MD, TE-5.5K-MD-AC: Kynar/Carbon Filled, Viton, Ceramic  
 For TE-5.5S-MD: 316 Stainless Steel, Viton, Ceramic, Carbon

**LIMITED WARRANTY:** March pumps are guaranteed only against defects in workmanship or materials for a period of one year from date of manufacture pumping water. For the complete warranty and to register online go to [www.marchpump.com/warranty-registration](http://www.marchpump.com/warranty-registration)