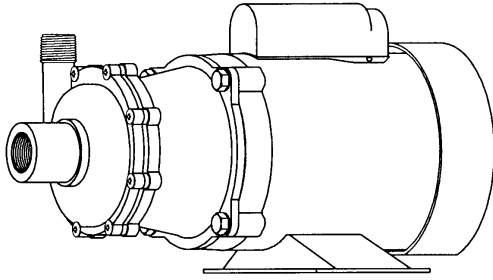




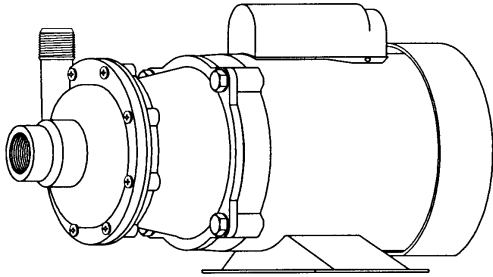
MARCH PUMPS

1819 PICKWICK AVE., GLENVIEW, IL 60026-1306, U.S.A
 PHONE: (847) 729-5300 - FAX: (847) 729-7062
 WWW.MARCHPUMP.COM

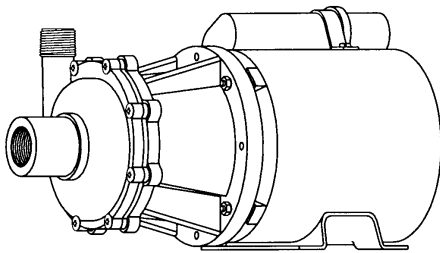
TE-5.5C-MD, TE-5.5C-MD-AC
 TE-5.5K-MD, TE-5.5K-MD-AC
 TE-5.5S-MD



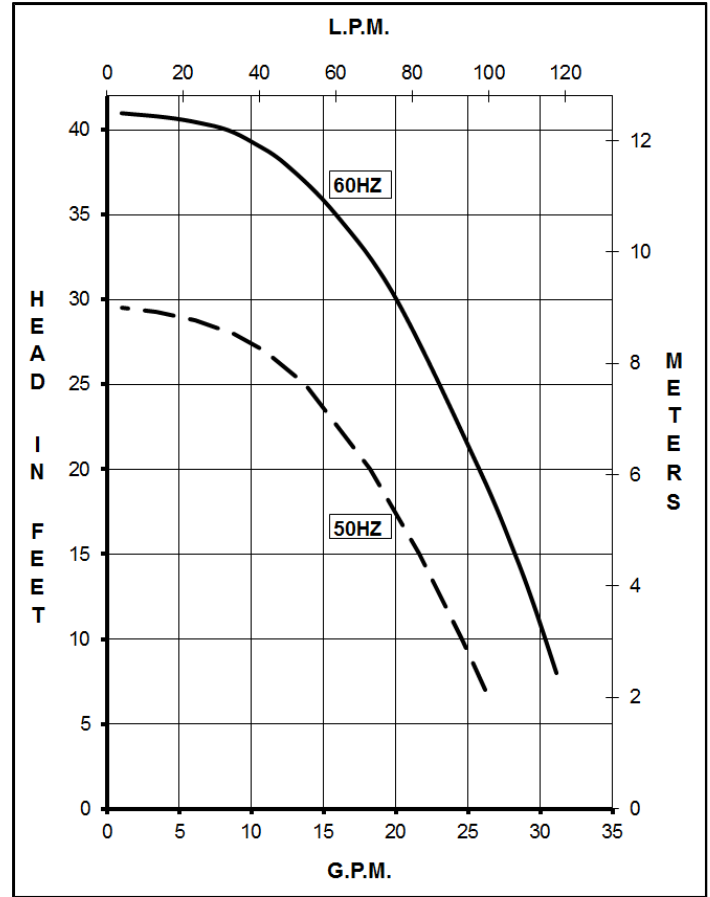
TE-5.5C-MD
 TE-5.5K-MD



TE-5.5S-MD



TE-5.5C-MD-AC
 TE-5.5K-MD-AC
 (Air Cooled Motor)



MODEL ABBREVIATIONS:

C = Polypropylene, K = Kynar
 S = Stainless Steel, MD = Magnetic Drive

DESCRIPTION:

Series 5.5 are centrifugal magnetic drive pumps, eliminating the need for a shaft seal. These pumps can be serviced with a screwdriver. Screws should be tightened in sequence and uniformly. Do not over tighten the screws or you may crush the plastic housing bosses. See the repair parts list for a breakdown of replacement parts.

OPERATION:

These pumps are not self-priming, lack a suction lift, and thus require a **flooded suction**. These pumps **cannot be run dry** because the impeller requires the liquid being pumped for lubrication. The direction of motor rotation should be clockwise when facing the inlet of the pump. For liquids with a specific gravity greater than water, have a higher viscosity, or for elevated temperatures, a trimmed impeller may be necessary. For application assistance, contact March Pump.

ELECTRICAL:

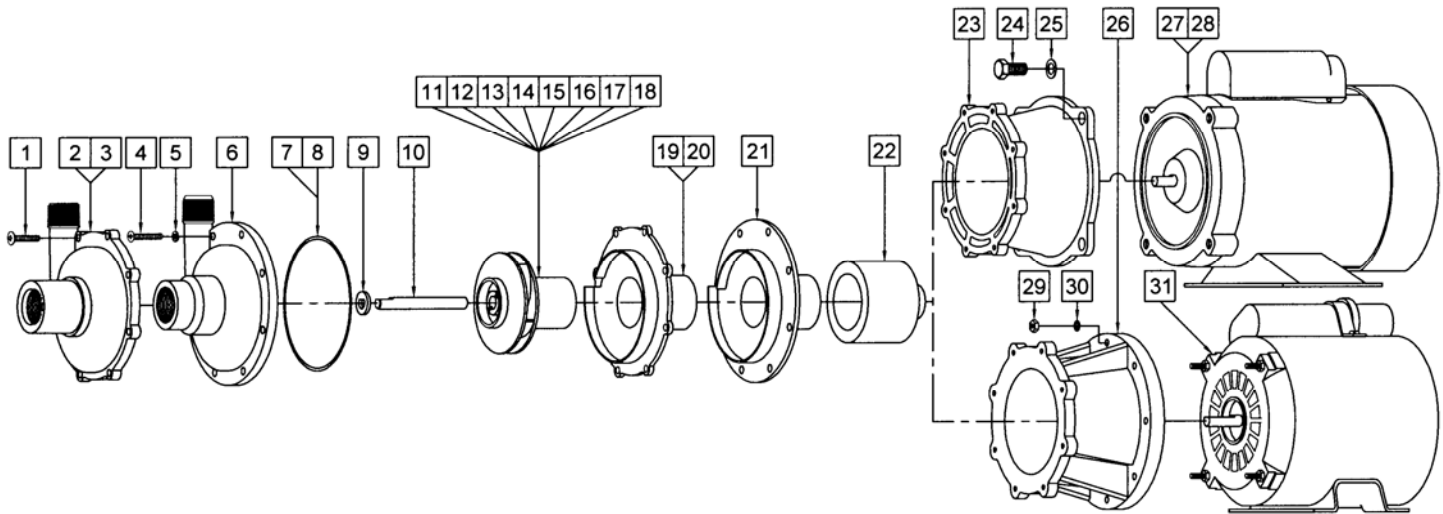
TE-5.5-MD-AC pumps are 115/230V, 1 phase, air cooled. TE-5.5-MD pumps are 115/230V, 1 phase or 230/460V, 3 phase, TEFC. The motors are U.L. listed and rated for continuous duty. Explosion proof and special voltage motors are available upon special order.

NOTES:

All specifications & data are based on pumping water & are intended as a guideline only. Specifications may vary with different motors.

| SPECIFICATIONS | | | TE | | | | |
|----------------------------|-------------|--------------|--------------------|------------|--------------|---------|---------|
| | | | 5.5C-MD-AC | 5.5K-MD-AC | 5.5C-MD | 5.5K-MD | 5.5S-MD |
| Max Flow | 50Hz | lpm | 102 | | 102 | | |
| | 60Hz | gpm | 30 | | 30 | | |
| Max Head | 50Hz | m | 9 | | 9 | | |
| | 60Hz | ft (psi) | 41 (17.7) | | 41 (17.7) | | |
| Inlet | | | 1" FPT | | 1" FPT | | |
| Outlet | | | 3/4" MPT | | 3/4" MPT | | |
| Max Internal Pressure | psi | | 50 | 75 | 50 | 75 | 200 |
| | bar | | 3.4 | 5 | 3.4 | 5 | 13 |
| Max Liquid Temperature | °F | | 190 | 200 | 190 | 200 | 250 |
| | °C | | 87 | 93 | 87 | 93 | 121 |
| Packed Weight | kg/lbs | | 7/15.5 | 7.5/16 | 15.5/34.5 | 16/35 | 17.5/39 |
| Motor Type | | | Air Cooled 1 Phase | | TEFC 1 Phase | | |
| 50Hz | 115V | Watts - Amps | 281 - 2.9 | | 290 - 4.4 | | |
| | 230V | Watts - Amps | 281 - 1.4 | | 290 - 2.2 | | |
| | | Kw - Rpm | 0.149 - 2850 | | 0.248 - 2850 | | |
| 60Hz | 115V | Watts - Amps | 407 - 2.7 | | 452 - 4.4 | | |
| | 230V | Watts - Amps | 407 - 1.4 | | 452 - 2.2 | | |
| | | Hp - Rpm | 1/5 - 3450 | | 1/3 - 3450 | | |
| Electrical Connection | | | Junction Box | | Conduit Box | | |
| Overall Pump Dimensions in | Height | | 6.95 / 17.6 | | 7.79 / 19.7 | | |
| | Width | | 5.81 / 14.7 | | 7.65 / 19.4 | | |
| | Inches / cm | | 12.89 / 32.7 | | 14.25 / 36.1 | | |
| Motor Type | | | Air Cooled 1 Phase | | TEFC 3 Phase | | |
| 50Hz | 190V | Watts - Amps | | | 350 - 1.2 | | |
| | 380V | Watts - Amps | | | 350 - 0.6 | | |
| | | Kw - Rpm | | | 0.186 - 2850 | | |
| 60Hz | 230V | Watts - Amps | | | 425 - 1.2 | | |
| | 460V | Watts - Amps | | | 425 - 0.6 | | |
| | | Hp - Rpm | | | 1/3 - 3450 | | |
| Electrical Connection | | | Junction Box | | Conduit Box | | |
| Overall Pump Dimensions in | Height | | 6.95 / 17.6 | | 7.34 / 18.6 | | |
| | Width | | 5.81 / 14.7 | | 9.24 / 23.4 | | |
| | Inches / cm | | 12.89 / 32.7 | | 15.07 / 38.2 | | |

NOTE: When attaching the Drive Magnet (item 22) to the motor shaft, position the face of the Drive Magnet flush with the face of the Motor Bracket (item 23 or 26).



REPAIR PARTS LIST

| ITEM | DESCRIPTION | MATERIAL | SIZE (Inches) | QTY. | PART # | TE-5.5C-MD-AC | TE-5.5K-MD-AC | TE-5.5C-MD | TE-5.5K-MD | TE-5.5S-MD |
|------|---|-----------------------|---------------------|------|----------------|---------------|---------------|------------|------------|------------|
| 1 | Screw (Truss Hd) | Stainless | #10-32 x 1 Lg | 8 | 0135-0180-1000 | S | S | S | S | |
| 2 | Front Housing | Polypropylene | | 1 | 0151-0027-1000 | S | | S | | |
| 3 | Front Housing | Kynar | | 1 | 0151-0044-1000 | | S | | S | |
| 4 | Screw | Stainless | #10-32 x 1-1/8 Lg | 8 | 0135-0181-1000 | | | | | S |
| 5 | Lock Washer | Stainless | #10 | 8 | 0151-0016-1000 | | | | | S |
| 6 | Front Housing | 316 Stainless Steel | | 1 | 0151-0002-0000 | | | | | S |
| 7 | "O" Ring | Viton | 3/32 CS x 4-7/16 OD | 1 | 0153-0015-1000 | S | S | S | S | S |
| 8 | "O" Ring | Viton/Teflon | 3/32 CS x 4-7/16 OD | 1 | 0153-0024-1000 | O | O | O | O | O |
| 9 | Thrust Washer | Ceramic | | 1 | 0155-0009-1000 | S | S | S | S | S |
| 10 | Shaft | Ceramic | | 1 | 0153-0007-1000 | S | S | S | S | S |
| 11 | Impeller | Polypropylene | | 1 | 0151-0029-0500 | S | | S | | O |
| 12 | Impeller w/Carbon Bushing | Polypropylene | | 1 | 0151-0029-0800 | O | | O | | O |
| 13 | Impeller w/Mica Teflon Bushing | Polypropylene | | 1 | 0151-0029-1300 | O | | O | | O |
| 14 | Impeller | Kynar | | 1 | 0151-0046-0300 | | S | | S | O |
| 15 | Impeller w/Carbon Bushing | Kynar | | 1 | 0151-0046-0500 | | O | | O | O |
| 16 | Impeller w/Mica Teflon Bushing | Kynar | | 1 | 0151-0046-1100 | | O | | O | O |
| 17 | Impeller w/Carbon Bushing | 316 Stainless | | 1 | 0151-0001-0400 | | | | | S |
| 18 | Impeller w/Mica Teflon Bushing | 316 Stainless | | 1 | 0151-0001-0800 | | | | | O |
| 19 | Rear Housing w/Thrust Washer | Polypropylene/Ceramic | | 1 | 0151-0028-0100 | S | | S | | |
| 20 | Rear Housing w/Thrust Washer | Kynar/Ceramic | | 1 | 0151-0045-0100 | | S | | S | |
| 21 | Rear Housing | 316 Stainless Steel | | 1 | 0151-0003-0000 | | | | | S |
| 22 | Drive Magnet | | | 1 | 0151-0061-0200 | S | S | S | S | S |
| 23 | Motor Bracket | Plastic | | 1 | 0151-0014-0100 | | | S | S | S |
| 24 | Screw | Stainless | 3/8-16 x 3/4 Lg | 4 | 0155-0017-1000 | | | S | S | S |
| 25 | Washer | Stainless | 3/8 ID x 5/8 OD | 4 | 0155-0019-1000 | | | S | S | S |
| 26 | Motor Bracket | Plastic | | 1 | 0151-0041-0100 | S | S | | | |
| 27 | Motor, TEFC, 115/230V, 1 Phase | | | 1 | 0151-0015-1000 | | | S | S | S |
| 28 | Motor, TEFC, 230/460V, 3 Phase* | | | 1 | 0151-0039-1000 | | | S | S | S |
| 29 | Hex Nut | Brass | #8-32 | 4 | 0410-0039-1000 | S | S | | | |
| 30 | Lock Washer | Stainless | #8 | 4 | 0620-0010-1000 | S | S | | | |
| 31 | Motor, Air Cooled, 115/230V, 1 Phase | | | 1 | 0175-0087-1000 | S | S | | | |
| W1 | Wet End Kit (Items: 1, 2, 7, 9, 10, 11, 19) | See Individual Items | | 1 | 0151-0069-0100 | S | | S | | |
| W2 | Wet End Kit (Items: 1, 3, 7, 9, 10, 14, 20) | See Individual Items | | 1 | 0151-0070-0100 | | S | | S | |

NOTE: Contact Factory for other materials and/or parts not listed.

*Not Shown

Legend: S = Standard, O = Optional

MATERIALS IN CONTACT WITH SOLUTION:

For TE-5.5C-MD, TE-5.5C-MD-AC: Polypropylene, Viton, Ceramic
 For TE-5.5K-MD, TE-5.5K-MD-AC: Kynar/Carbon Filled, Viton, Ceramic
 For TE-5.5S-MD: 316 Stainless Steel, Viton, Ceramic, Carbon

LIMITED WARRANTY: March pumps are guaranteed only against defects in workmanship or materials for a period of one year from date of manufacture pumping water. For the complete warranty and to register online go to www.marchpump.com/warranty-registration