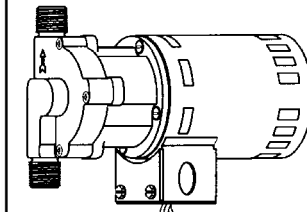
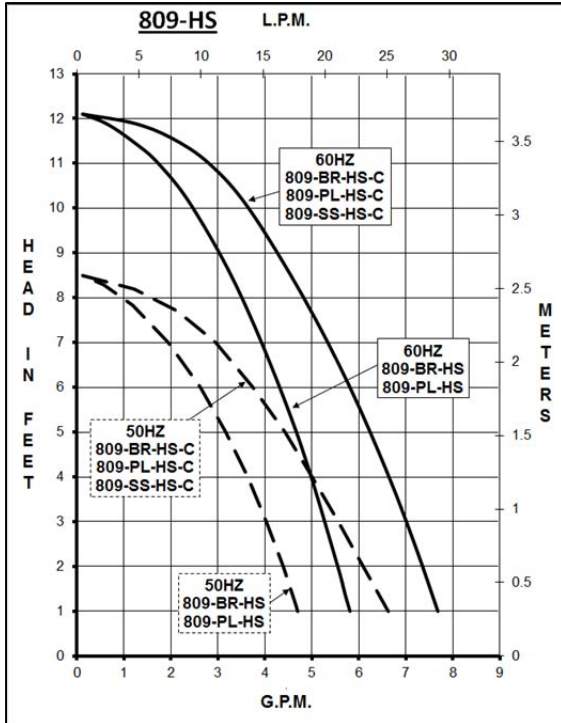




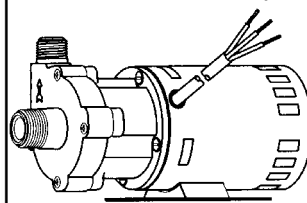
MARCH PUMPS

1819 PICKWICK AVE., GLENVIEW, IL 60026-1306, U.S.A
 PHONE: (847) 729-5300 - FAX: (847) 729-7062
 WWW.MARCHPUMP.COM

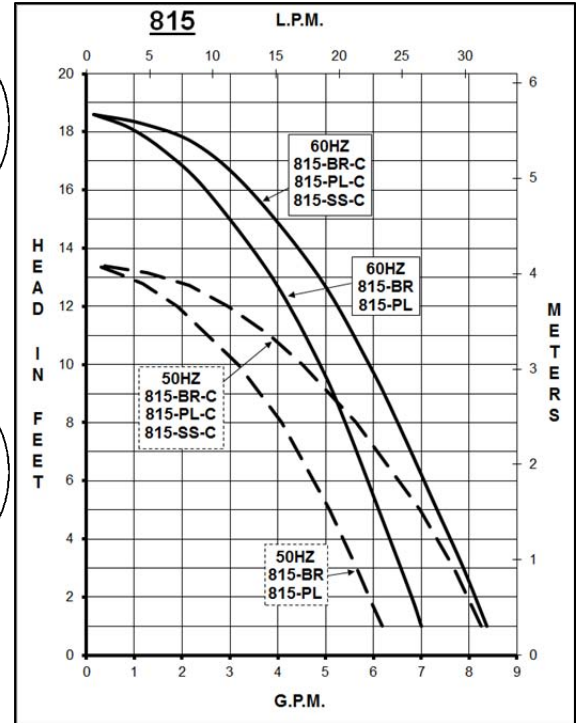
809-HS & 815 HOT WATER PUMPS



809-HS-BR, 815-BR
809-HS-PL, 815-PL
Inline Inlet Housing



809-HS-BR-C, 815-BR-C
809-HS-PL-C, 815-PL-C
809-HS-SS-C, 815-SS-C
Center Inlet Housing



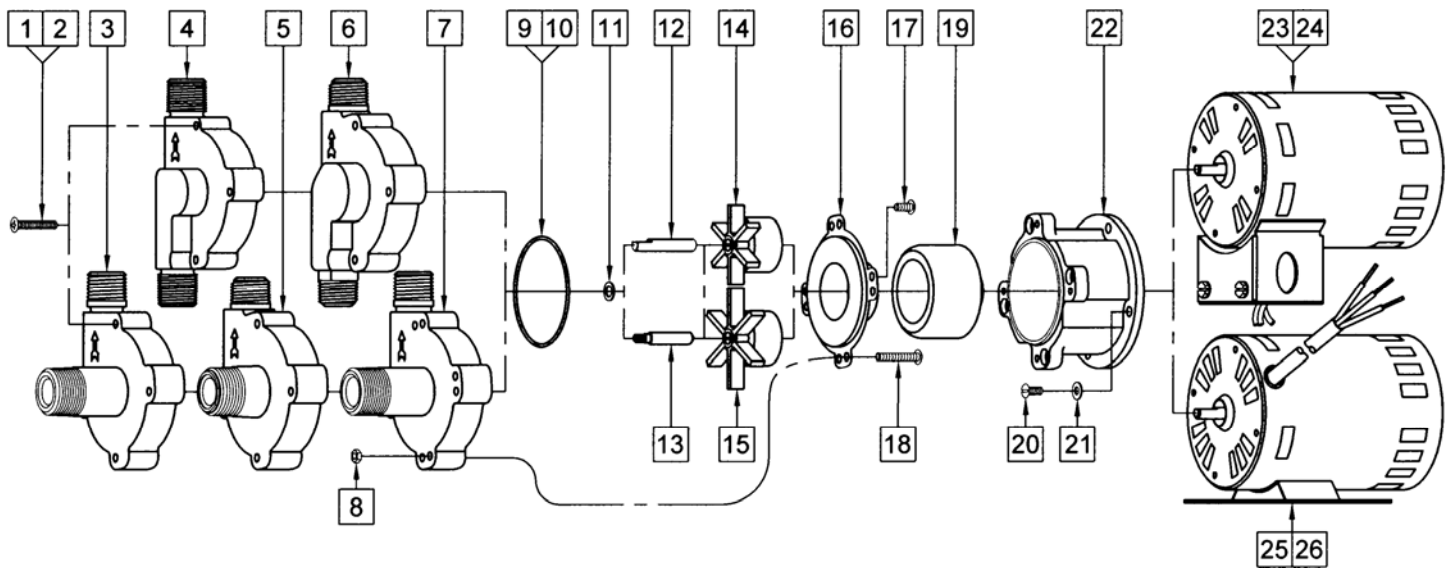
ABBREVIATIONS: BR = Bronze, PL = Polysulfone Plastic, SS = Stainless Steel, C = Center Inlet.

DESCRIPTION: The March 809-HS & 815 Series hot water booster centrifugal magnetic drive pumps are built to handle liquid transfer in heating and cooling operations. Contact the factory for application assistance.

OPERATION: These pumps are not self-priming, lack a suction lift, and thus require a flooded suction. These pumps cannot be run dry.

INSTALLATION: The 809-HS & 815 Series pumps should be installed with the pump housing arrow pointing in the direction of flow within the system. If the arrow indicating flow is not in the direction required, remove the housing screws (Item 1 or 2) holding the housing to the motor bracket and rotate the housing assembly as required. Replace the screws and tighten. The pump is composed of a wet end assembly which can be separated by unscrewing the screws (Item 1 or 2). The pump will then separate into 2 parts. The liquid will be contained within the wet end assembly unless the screws (Item 17 or 18) on the rear housing are loosened.

SPECIFICATIONS			809-BR-HS	809-PL-HS	809-BR-HS-C	809-PL-HS-C	809-SS-HS-C	815-BR	815-PL	815-BR-C	815-PL-C	815-SS-C	
Max Flow	50Hz	lpm	18.9			26.4			22.7		30		
	60Hz	gpm	6			7.5			7		8		
Max Head	50Hz	m	2.5			2.5			4.1		4.1		
	60Hz	ft (psi)	12.1 (5.23)			12.1 (5.23)			18.6 (8.05)		18.6 (8.05)		
Inlet			1/2" MPT		3/4" MPT	3/8" FPT & 3/4" MPT	3/4" MPT	1/2" MPT		3/4" MPT	3/8" FPT & 3/4" MPT	3/4" MPT	
Outlet			1/2" MPT		1/2" MPT			1/2" MPT		1/2" MPT			
Max Internal Pressure		psi	150	50	150	50	150	150	50	150	50	150	
		bar	10	3.4	10	3.4	10	10	3.4	10	3.4	10	
Max Liquid Temperature		°F	250			250			250		250		
		°C	121			121			121		121		
Packed Weight		kg/lbs	2.7/6	2.3/5	2.7/6	2.3/5	2.7/6	2.7/6	2.3/5	2.7/6	2.3/5	2.7/6	
50Hz	115V	Motor Type	Air Cooled 1 Phase			Air Cooled 1 Phase			Air Cooled 1 Phase		Air Cooled 1 Phase		
		Watts - Amps	100 - 1.4			109 - 1.4			114 - 1.4		129 - 1.4		
		Kw - Rpm	0.029 - 2850			0.029 - 2850			0.029 - 2850		0.029 - 2850		
		Hp - Rpm	1/25 - 3450			1/25 - 3450			1/25 - 3450		1/25 - 3450		
60Hz	115V	Watts - Amps	87 - 1.4			97 - 1.4			111 - 1.4		122 - 1.4		
		Hp - Rpm	1/25 - 3450			1/25 - 3450			1/25 - 3450		1/25 - 3450		
		Electrical Connection	Conduit Box			3 ft (0.9 m) Cord			Conduit Box		3 ft (0.9 m) Cord		
		Overall Pump Dimensions in Inches / cm	Height	5.31 / 13.4	4.50 / 11.4	4.37 / 11.0	4.50 / 11.4	5.31 / 13.4	4.50 / 11.4	4.37 / 11.0	4.50 / 11.4	5.31 / 13.4	4.50 / 11.4
	Width	3.33 / 8.4	3.38 / 8.5	3.50 / 8.8			3.33 / 8.4	3.38 / 8.5	3.50 / 8.8				
	Length	7.74 / 19.6			8.94 / 22.7	8.43 / 21.4	8.62 / 21.8	7.74 / 19.6	8.94 / 22.7	8.43 / 21.4	8.62 / 21.8	8.62 / 21.8	
50Hz	230V	Motor Type	Air Cooled 1 Phase			Air Cooled 1 Phase			Air Cooled 1 Phase		Air Cooled 1 Phase		
		Watts - Amps	104 - 0.7			110 - 0.7			117 - 0.7		128 - 0.7		
		Kw - Rpm	0.029 - 2850			0.029 - 2850			0.029 - 2850		0.029 - 2850		
		Hp - Rpm	1/25 - 3450			1/25 - 3450			1/25 - 3450		1/25 - 3450		
60Hz	230V	Watts - Amps	90 - 0.7			101 - 0.7			112 - 0.7		126 - 0.7		
		Hp - Rpm	1/25 - 3450			1/25 - 3450			1/25 - 3450		1/25 - 3450		
		Electrical Connection	3 ft (0.9 m) Cord			3 ft (0.9 m) Cord			3 ft (0.9 m) Cord		3 ft (0.9 m) Cord		
		Overall Pump Dimensions in Inches / cm	Height	4.87 / 12.3	4.88 / 12.3	4.50 / 11.4	4.37 / 11.0	4.50 / 11.4	4.87 / 12.3	4.88 / 12.3	4.50 / 11.4	4.37 / 11.0	4.50 / 11.4
	Width	3.33 / 8.4	3.38 / 8.5	3.50 / 8.8			3.33 / 8.4	3.38 / 8.5	3.50 / 8.8				
	Length	7.74 / 19.6			8.94 / 22.7	8.43 / 21.4	8.62 / 21.8	7.74 / 19.6	8.94 / 22.7	8.43 / 21.4	8.62 / 21.8	8.62 / 21.8	



REPAIR PARTS LIST

ITEM	DESCRIPTION	MATERIAL	SIZE (Inches)	QTY	PART #	809	809	809	809	809	815	815	815	815	815
						BR-HS	PL-HS	BR-HS-C	PL-HS-C	SS-HS-C	BR	PL	BR-C	PL-C	SS-C
1	Screw	Steel	#8-32 x 1 Lg	4	0923-0003-1000	S	S	S	S		S	S	S	S	
2	Screw	Stainless	#8-32 x 1 Lg	4	0809-0205-1000					S					S
3	Pump Housing	Bronze	Center Inlet	1	0809-0142-0000			S					S		
4	Pump Housing	Bronze	Inline Inlet & Outlet	1	0809-0013-0000	S					S				
5	Pump Housing	Polysulfone	Center Inlet	1	0809-0179-0100				S					S	
6	Pump Housing	Polysulfone	Inline Inlet & Outlet	1	0809-0079-0100		S					S			
7	Pump Housing	Stainless	Center Inlet	1	0809-0150-0000					S					S
8	Hex Nut	Stainless		4	0991-0004-1000					S					S
9	"O" Ring	Silicone	0.070 CS x 2.441 ID	1	0809-0165-1000	S		S		S	S		S		S
10	"O" Ring	Silicone	1/16 CS x 2-3/8 ID	1	0809-0027-1000		S		S			S		S	
11	Thrust Washer	Teflon		1	0809-0043-1000	S	S	S	S	S	S	S	S	S	S
12	Shaft	Stainless		1	0809-0161-1000	S	S	S	S	S	S	S	S	S	S
13	Shaft (Old Style)	Stainless	Left-Hand Thread	1	0809-0008-1000	O					O				
14	Impeller	Ryton/Teflon/Glass	1-11/16 Dia.	1	0809-0005-0200	S	S	S	S	S					
15	Impeller	Ryton/Teflon/Glass	2-5/32 Dia.	1	0809-0107-0200						S	S	S	S	S
16	Rear Housing	Stainless		1	0809-0012-1000	S	S	S	S	S	S	S	S	S	S
17	Screw	Stainless	#8-32 x 3/8 Lg	4	0135-0040-1000	S	S	S	S		S	S	S	S	
18	Screw	Stainless	#8-32 x 1 Lg	4	0809-0205-1000					S					S
19	Drive Magnet			1	0125-0083-0100	S	S	S	S	S	S	S	S	S	S
20	Screw	Stainless	#8-32 x 3/8 Lg	4	0135-0040-1000	S	S	S	S	S	S	S	S	S	S
21	Washer	Stainless	#8	4	0858-0004-1000	S	S	S	S	S	S	S	S	S	S
22	Motor Bracket	Plastic		1	0809-0058-1000	S	S	S	S	S	S	S	S	S	S
23	Motor 115V, 50/60Hz		Conduit Box	1	0809-0090-1000	S	S				S	S			
24	Motor 230V, 50/60Hz*		w/Cord, No Base	1	0135-0037-1000	S	S				S	S			
25	Motor 115V, 50/60Hz		w/Cord & Base	1	0809-0123-1000			S	S	S			S	S	S
26	Motor 230V, 50/60Hz		w/Cord & Base	1	0809-0124-1000			S	S	S			S	S	S

NOTE: Contact Factory for other materials and/or parts not listed.

*Not Shown

Legend: S = Standard, O = Optional

NOTES: All specifications & data are based on pumping water & are intended as a guideline only. Specifications may vary with different motors.

LUBRICATION: The motor should be oiled annually at the start of the heating season with 4 or 5 drops of SAE 20 weight non-detergent oil in each bearing. If the pump is used year round it should be oiled every six months. Do not over oil.

GENERAL SAFETY INFORMATION: Follow all local electrical and safety codes, and the Occupational Safety and Health Act (OSHA). Make certain that the power source conforms to the requirements of your equipment. Always disconnect power source before performing any work on or near the electric motor. Caution must be exercised to relieve any pressure in the system and in draining hot water from the pump or the system. March cannot recommend the 809 Series out of bronze where the liquid is used for human consumption per California Law due to the presence of lead.

*UL Recognition on pumps, file E80954, is for water only. Motors are U.L. Yellow Card listed, impedance protected or thermal overload Protected. Complete pump under U.L. file E80954.

DISASSEMBLY AND REASSEMBLY: The motor can be removed from the wet end assembly without draining the liquid from the system. To do so remove four screws (Item 1 or 2) and slide the motor assembly away. If parts inside the wet end assembly must be removed, isolate the pump or drain the system. When the system is drained and cool, remove the four screws (Item 17 or 18) from the rear of the housing. The rear housing can now be removed. Remaining pump parts can be removed. Replace any worn or damaged parts. Replace the "O" ring anytime the rear housing is removed.

LIMITED WARRANTY: March pumps are guaranteed only against defects in workmanship or materials for a period of one year from date of manufacture pumping water. For the complete warranty and to register online go to www.marchpump.com/warranty-registration