



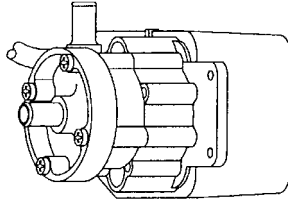
MARCH PUMPS

1819 PICKWICK AVE., GLENVIEW, IL 60026-1306, U.S.A
 PHONE: (847) 729-5300 - FAX: (847) 729-7062
 WWW.MARCHPUMP.COM

1A-MD, AC-1A-MD

1C-MD, AC-1C-MD

1U-MD

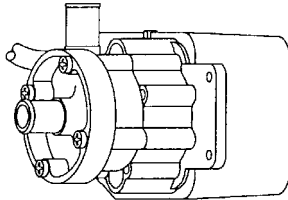


1A-MD-3/8

MODEL ABBREVIATIONS:

A = Smooth Inlet/Outlet, C = Threaded Inlet/Outlet, U = Screen Inlet, MD = Magnetic Drive
 AC = Expose Skelton Motor

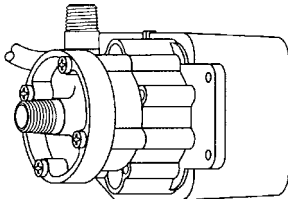
DESCRIPTION: Series 1 are centrifugal magnetic drive pumps, eliminating the need for a shaft seal. These pumps can be serviced with a screwdriver. The models 1A-MD, 1C-MD, and 1U-MD are hermetically encapsulated, which allows the pumps to run fully submerged in many liquids or in open air for complete moisture protection. See the repair parts list for a breakdown of replacement parts.



1A-MD-1/2

OPERATION:

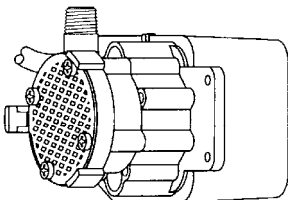
These pumps are not self-priming, lack a suction lift, and thus require a **flooded suction**. These pumps **cannot be run dry** because the impeller requires the liquid being pumped for lubrication. For application assistance, contact March Pump.



1C-MD

ELECTRICAL:

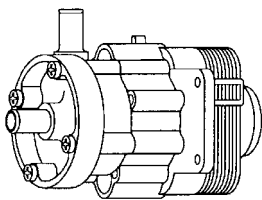
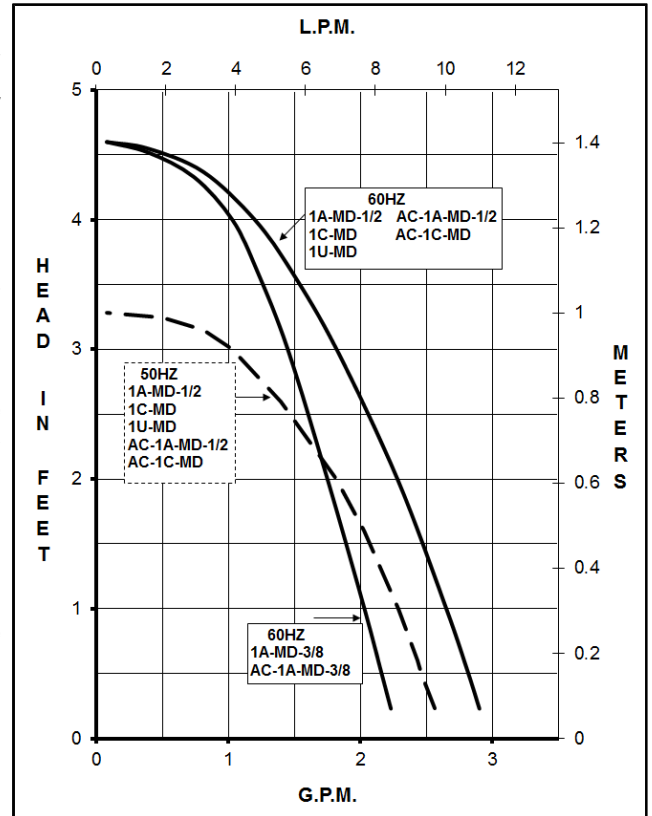
Motors are available in different electrical configurations such as 115V 50/60Hz, 230V 50/60Hz, or 115V 60Hz, 1 phase, and rated as continuous duty. All cord sets are U.L. LISTED 18/3 wire SJT plastic. The motors (#26 & #27) are C.S.A. approved under File NO. 40072. The models 1A-MD, 1C-MD & 1U-MD are U.L. Recognized under the U.L. component program. U.L. Recognition On Pumps Is For Water Only.



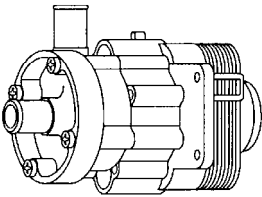
1U-MD

NOTES:

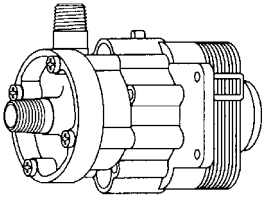
All specifications & data are based on pumping water & are intended as a guideline only. Specifications may vary with different motors.



AC-1A-MD-3/8

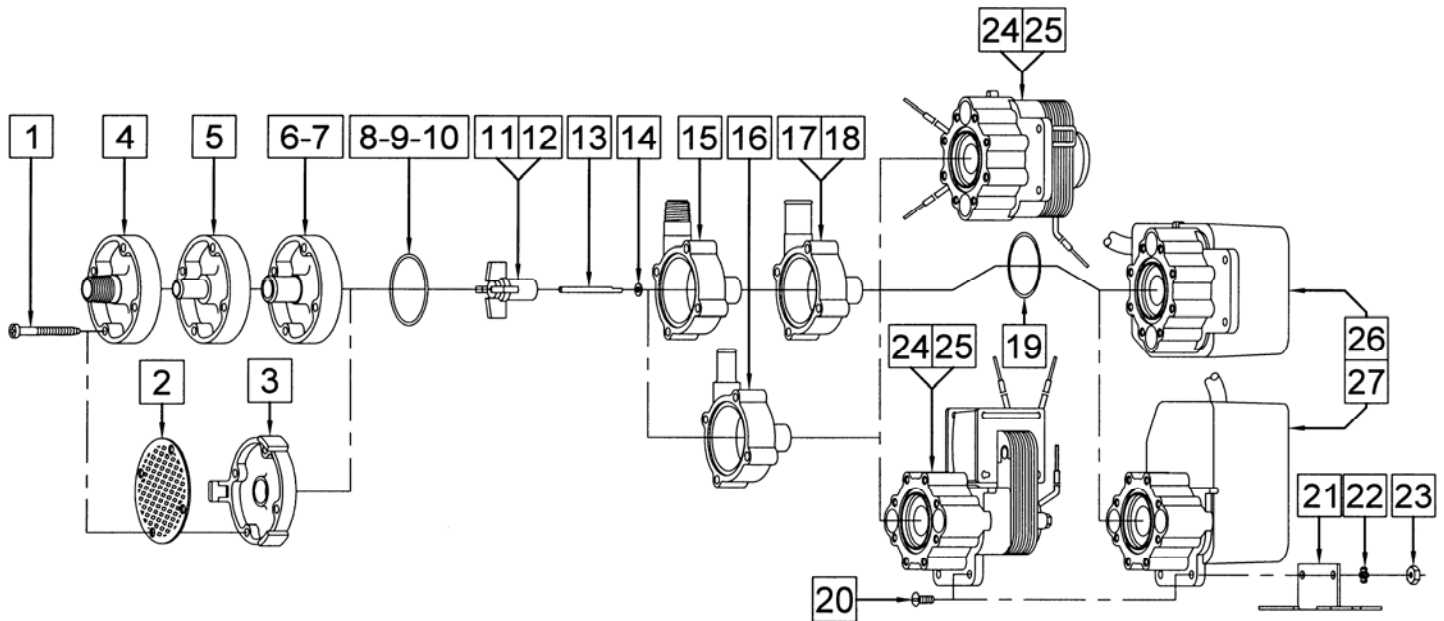


AC-1A-MD-1/2



AC-1C-MD

SPECIFICATIONS		1A-MD-3/8	1A-MD-1/2	1C-MD	1U-MD	AC-1A-MD-3/8	AC-1A-MD-1/2	AC-1C-MD	
Max Flow	50Hz	lpm	8.7	9		8.7	9		
	60Hz	gpm	2.3	3.0		2.3	3.0		
Max Head	50Hz	m	1					1	
	60Hz	ft (psi)	4.6 (2.0)					4.6 (2.0)	
Inlet		3/8" OD	1/2" OD	1/4" MPT	Screen	3/8" OD	1/2" OD	1/4" MPT	
Outlet		3/8" OD	1/2" OD	1/4" MPT	1/4" MPT	3/8" OD	1/2" OD	1/4" MPT	
Max Internal Pressure	psi	50					50		
	bar	3.4					3.4		
Max Liquid Temperature	°F	190 open air, 160 sub					190 open air		
	°C	87 open air, 71 sub					87 open air		
Packed Weight	kg/lbs	1.13/2.5					1.04/2.3		
Motor Type		TE/SUB 1 Phase				Skeleton 1 Phase			
50Hz	115V	Watts - Amps	19 - 0.45						
		Kw - Rpm	0.003 - 2650						
60Hz	115V	Watts - Amps	19 - 0.45					19 - 0.45	
		Hp - Rpm	1/200 - 3200					1/200 - 3200	
Electrical Connection		6 ft (1.8 m) Cord w/plug				16" (40 cm) Loose Leads			
Motor Type		TE/SUB 1 Phase				Skeleton 1 Phase			
50Hz	230V	Watts - Amps	19 - 0.23					19 - 0.23	
		Kw - Rpm	0.003 - 2650					0.003 - 2650	
60Hz	230V	Watts - Amps	19 - 0.23					19 - 0.23	
		Hp - Rpm	1/200 - 3200					1/200 - 3200	
Electrical Connection		6 ft (1.8 m) Cord no plug				16" (40 cm) Loose Leads			
Overall Pump Dimensions in Inches / cm	Height	3.17 / 8.0				3.06 / 7.7			
	Width	3.75 / 9.5				3.60 / 9.1			
	Length	4.44 / 11.2		3.83 / 9.7		4.38 / 11.1			



REPAIR PARTS LIST

ITEM	DESCRIPTION	MATERIAL	SIZE (Inches)	QTY	PART #	1A-MD-3/8	1A-MD-1/2	1C-MD	1U-MD	AC		
										1A-MD-3/8	1A-MD-1/2	1C-MD
1	Self-Tapping Screw	Stainless Steel	#7-19 x 1-7/16 Lg.	4	0115-0062-1000	S	S	S	S	S	S	S
2	Inlet Screen	Delrin		1	0115-0012-1000	O	O	O	S			
3	Cover	Cycolac		1	0115-0016-1000	O	O	O	S			
4	Cover	Polypropylene	1/4 MPT Inlet	1	0115-0058-1000	O	O	S	O	O	O	S
5	Cover	Polypropylene	3/8 O.D. Inlet	1	0115-0075-1000	S	O	O	O	S	O	O
6	Cover	Polypropylene	1/2 O.D. Inlet	1	0115-0060-1000	O	S	O	O	O	S	O
7	Cover	Kynar	1/2 O.D. Inlet	1	0115-0096-1000	O	O	O	O	O	O	O
8	"O" Ring (Cover)	Buna N	1/16 CS x 1-7/16 OD	1	0115-0018-1000	S	S	S	S	S	S	S
9	"O" Ring (Cover)	Viton	1/16 CS x 1-7/16 OD	1	0115-0061-1000	O	O	O	O	O	O	O
10	"O" Ring (Cover)	Teflon	1/16 CS x 1-7/16 OD	1	0115-0069-1000	O	O	O	O	O	O	O
11	Impeller	Nylon/Ceramic Magnet		1	0115-0008-0100	S	S	S	S	S	S	S
12	Impeller	Kynar/Ceramic Magnet		1	0115-0097-0100	O	O	O	O	O	O	O
13	Shaft	316 Stainless		1	0115-0032-1000	S	S	S	S	S	S	S
14	Thrust Washer	Carbon/Teflon		1	0115-0033-1000	S	S	S	S	S	S	S
15	Rear Housing	Polypropylene	1/4 MPT Outlet	1	0115-0057-1000	O	O	S	S	O	O	S
16	Rear Housing	Polypropylene	3/8 O.D. Outlet	1	0115-0074-1000	S	O	O	O	S	O	O
17	Rear Housing	Polypropylene	1/2 O.D. Outlet	1	0115-0059-1000	O	S	O	O	O	S	O
18	Rear Housing	Kynar	1/2 O.D. Outlet	1	0115-0095-1000	O	O	O	O	O	O	O
19	"O" Ring (Bracket)	Buna N	1/16 CS x 1-5/16 OD	1	0115-0017-1000	S	S	S	S			
20	Screw	Stainless Steel	#6-32 x 3/8 Lg.	2	0455-0038-1000	O	O	O	O	O	O	O
21	Base	Stainless Steel		1	0115-0081-1000	O	O	O	O	O	O	O
22	Lock Washer	Stainless Steel	#6	2	0455-0037-1000	O	O	O	O	O	O	O
23	Nut	Steel	#6-32	2	0455-0043-1000	O	O	O	O	O	O	O
24	Air Cooled Assembly (115V 60Hz)			1	0858-0009-0100					S	S	S
25	Air Cooled Assembly (230V 50/60Hz)			1	0858-0013-0100					S	S	S
26	Epoxy Motor, Bracket, Cord Assy (115V 50/60Hz)			n/a	Not Available	S	S	S	S			
27	Epoxy Motor, Bracket, Cord Assy (230V 50/60Hz)			n/a	Not Available	S	S	S	S			

NOTE: Contact Factory for other materials and/or parts not listed.

Legend: S = Standard, O = Optional

MATERIALS IN CONTACT WITH SOLUTION:

Polypropylene, Nylon, Buna N, 316 Stainless Steel, Ceramic Magnet, and Carbon/Teflon washer.

When epoxy pumps are submerged the following additional materials are in contact Epoxy, Noryl, Cycolac, Delrin, and SJT cord.

LIMITED WARRANTY: March pumps are guaranteed only against defects in workmanship or materials for a period of one year from date of manufacture pumping water. For the complete warranty and to register online go to www.marchpump.com/warranty-registration