

Insist on genuine Jabco parts, made only by the original and world's leading manufacturer of self-priming flexible neoprene impeller pumps.

PARTS LIST			
Key	Description	Qty	Part No.
1	Impeller Model 9440, -01, -21, -200	1	2999
2	Spline Plug	1	4239
3	Body	1	9444
4	Retaining Ring	1	SP1700-143
5	O' Ring	1	SP2000-54
6	Bearing Housing	1	3208
7	Key	1	9214
8	Bearing Seal	1	SP2700-58
9	Ball Bearing	1	SP2800-15
10	Shaft	1	3207
11	Retaining Ring	1	SP1700-196
12	Ball Bearing	1	SP2800-16
13	Retaining Ring	1	SP1700-196
14	Retaining Ring	1	SP1701-433
15	Bearing Seal	1	SP2700-59
16	Slinger	1	3212
17	Seal Assembly comprising:	1	9309
	1 Seal Seat	1	9318
	2 Seal Seat Ring	1	9472
	3 Carbon Ring	1	9473
	4 Spring	1	9478
	5 Drive Sleeve	1	9477
	6 Ferrule	1	9474
	7 Truss Ring	1	9476
	8 Drive Ring	1	9471
	9 Bellows	1	9475
	10 Locking Rings	1	9479
18	Hexagon Bolts	4	SP1095-29
19	Lock Washers	4	SP1608-02
20	Hexagon Nuts	4	SP1085-15
21	Dowel Pin	1	2575

Key	Description	Qty	Part No.
22	Screws	1	SP1006-03
23	Cam	1	9446
24	Gasket	1	3209
25	End Cover Screws	8	SP1006-05
26	End Cover	1	9445, -01, -21, etc
27	Wearplate	1	9316
28	Port Flange:		
	Models 9440, -01	2	3218-01
	Models 9440-21	2	3218-21
	Models 9440, -200	1	9443
29	Hexagon Bolt	4	SP1095-30
30	Lock Washers	4	SP1608-04
31	Gasket	2	3219

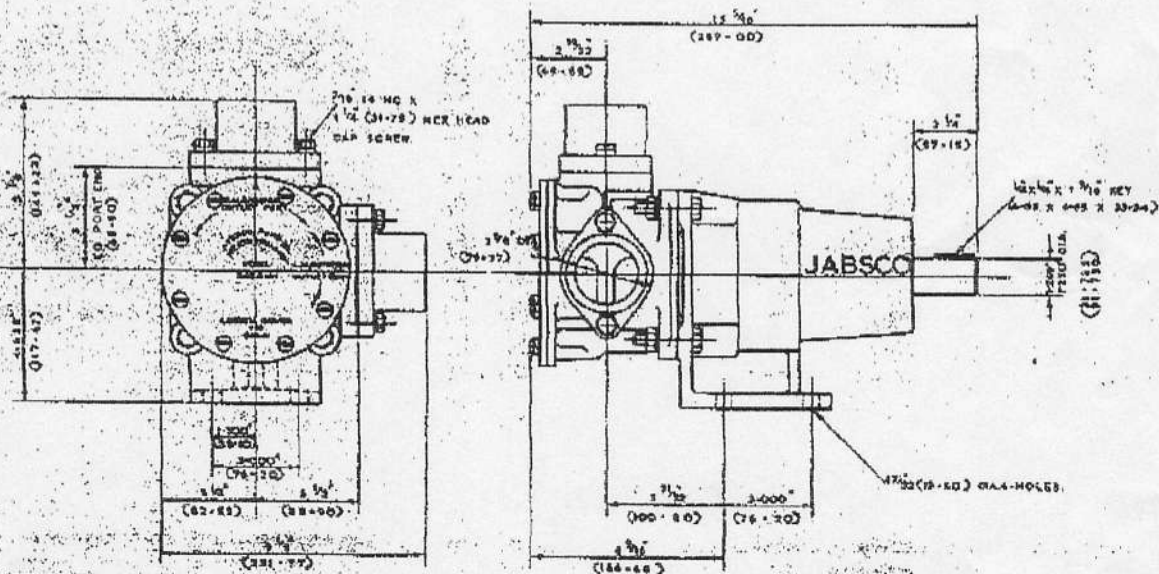
SERVICE KIT	
Pump model number	Service kit number
9440	SK207
9440-01	SK207
9440-21	SK207
9440-200	SK207

Service kit includes:
 Impeller
 Gasket
 O' Ring
 Seal Assembly
 End Cover Screws

OPERATING INSTRUCTIONS

- 1 **Installation:** Pump may be mounted in any position. The rotation of the pump shaft determines the location of the pump's intake and discharge ports. (Refer to dimensional drawing.) Before installation, turn the pump shaft in the direction of the operating rotation.
- 2 **Drive:** Belt or Direct with flexible coupling.
Belt Drive: Overtight belt load will reduce pump bearing life.
Direct Drive: Clearance should be left between drive shaft and pump shaft when installing coupling. Always mount and align pump and drive shaft before tightening the coupling set screw.
- 3 **Speeds:** 100 rpm to the maximum shown in the performance table. For longer pump life, operate at lowest possible speeds.
- 4 **Model 9440 is self priming over a wide speed range with suction lift up to 15 feet and suction lift up to 22 feet when primed. Intake lines must be air-tight to ensure self priming.**
Note: Pump will prime when impeller is DRY but suction lift of 15 ft. is only obtainable when impeller is greased or lubricated with liquid being pumped. All performance figures stated are for water of ambient temperature.
- 5 **Running Dry:** Unit depends on liquid pumped for lubrication. *Do not run dry* for more than 30 seconds. Lack of liquid will burn the impeller.
- 6 **Caution:** Do not pump petroleum derivatives, solvents, thinners, highly concentrated or organic acids. If corrosive fluids are handled, pump life will be prolonged if flushed with water after each use or after each work day.
- 7 **Pressures:** For continuous operation, pressure should not exceed 35 pounds for the standard Model 9440.
- 8 **Temperatures:** 45°-180°F.
- 9 **Freezing Weather:** Drain unit by loosening end cover. Most methyl alcohol (methanol) based anti-freezes can be used. *Do not use petroleum based compounds or rust inhibitors.*
- 10 **Gasket:** Use standard pump part. A thicker gasket will reduce priming ability. A thinner gasket will cause impeller to bind.
- 11 **Spare Parts:** To avoid costly shut downs, keep a Jabscu Service Kit on hand.

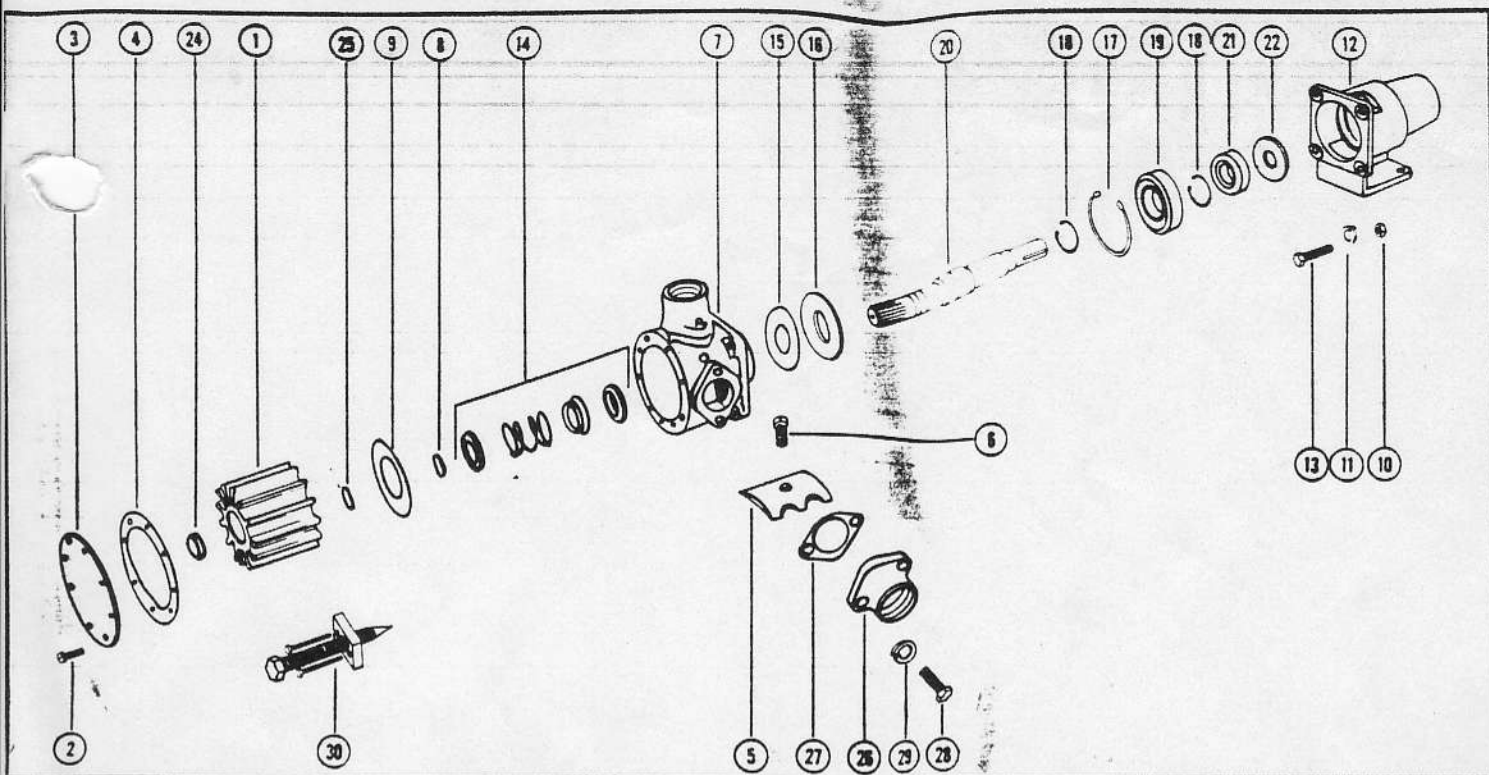
DIMENSIONAL DRAWING



ITT FLUID HANDLING LIMITED

BELCON INDUSTRIAL ESTATE, BINGLEY ROAD, HODDESDON, HERTFORDSHIRE
 TELEPHONE: HODDESDON 67161 TELEGRAMS: JABSCQ, HODDESDON TELEX: 263251





PARTS LIST

KEY	PART NUMBER	DESCRIPTION	QTY. REQ.	KEY	PART NUMBER	DESCRIPTION	QTY. REQ.
1	†2999-0001*	Impeller	1	17	18727-0000	Retaining Ring (Inner Brg. to Pedestal)	1
2	91006-0050	Screws (End Cover)	8	18	18709-0000	Retaining Ring (Brg.-to-Shaft)	2
3	12069-0000	End Cover	1	19	92600-0160	Ball Bearing (Inner)	1
4	3209-0000*	Gasket	1	20	3207-0000	Shaft	1
5	3210-0000	Cam	1	21	92600-0150	Ball Bearing (Outer)	1
6	91006-0030	Screw (Cam)	1	22	3213-0000	Bearing Seal	1
7	3204-0000	Body	1	23	9214-0000	Key	1
8	18708-0000*	Retaining Ring (Seal)	1	24	†4239-0000	Spline Seal	1
9	3211-0000	Wearplate	1	25	†92000-0540*	O - Ring	1
10		Hex Nut 1/2 - 13 C.P. St.	4			Port Flange Assembly	
11		Lock Washer 1/2 C.P. St.	4			Consists of:	
12	3206-0000	Bearing Housing (Pedestal)	1	26	3218-0010	Port Flange (2" NPT)	2
13		Hex Head Bolt (Pedestal to Body) 1/4 - 20 x 1-1/8 C.P. St.	4	27	3219-0000	Gasket	2
14	3222-0000*	Seal Assembly	1	28		Hex Head Bolt	4
15	3212-0000	Slinger	1	29		7/16 - 14 x 1-1/4 Br.	
16	3214-0000	Bearing Seal (Inner)	1	30	1019-0000	Lock Washer 7/16 C.P. St.	4
					90029-0001	Impeller Puller	1
						Service Kit (Not Shown)	

* Parts Contained in Service Kit † Parts included with Impeller