

# REPLACEMENT PARTS LIST

MODEL NO.  
32V/6132  
12V/6112 - 24V/6124  
VACUUM PUMPS

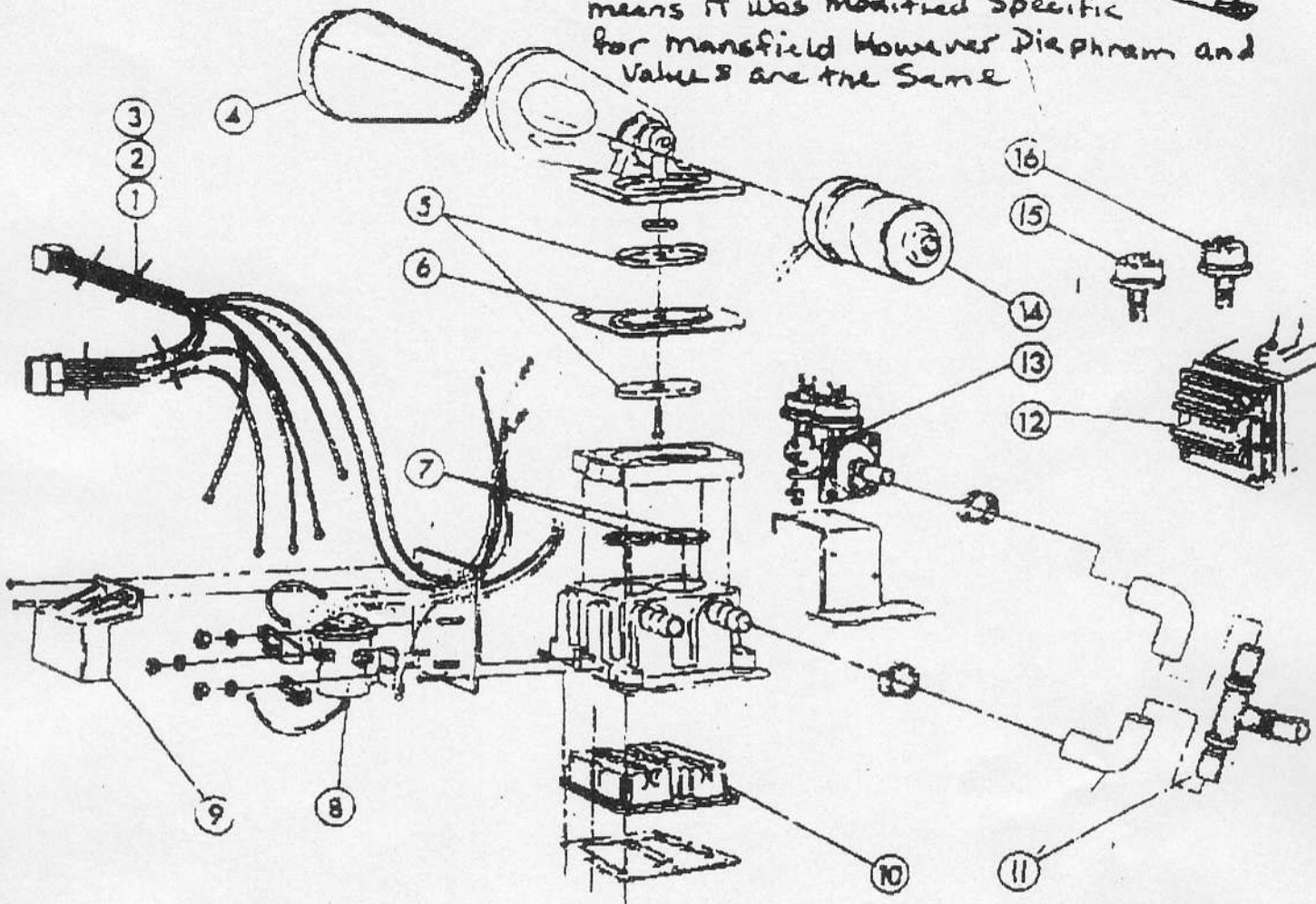
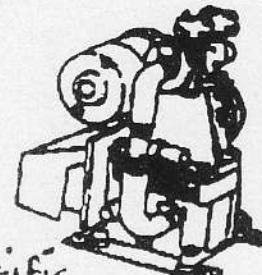
Vac Switches  
Chris has info on  
Direct replace.

Peters + Russell pump

Bought by Jobsco

#6685-J Dash J

means it was modified Specific  
for mansfield However Diaphragm and  
Valves are the Same



Note (Drip Proof Cover Not Shown)

## COMPONENTS & PARTS LIST

KEY	PART NO.	DESCRIPTION
1	6734	HARNESS - VAC PUMP 24V
2	6734	HARNESS - VAC PUMP 32V
3	6243	HARNESS - VAC PUMP 12V
4	6871	BELT
5	7220	BACKING PLATE ASSY.
6	6874	PUMP DIAPHRAGM
7	6893	CHECK VALVES (QTY. 2)
8	5831	(12V) SOLENOID ASSY.
8	6836	(32V) SOLENOID ASSY.
8	6900	(24V) SOLENOID ASSY.
9	6239	TERMINAL BOARD COVER
10	7221	SURGE CHAMBER
11	6871	HOSE ASSY.

KEY	PART NO.	DESCRIPTION
12	6873	24V/32V MINI CONVERTER
13	6872	MANIFOLD ASSY. - COMPLETE
14	6882	12V MOTOR WITH TERMINALS
14	6899	24V MOTOR WITH TERMINALS
14	5148	32V MOTOR WITH TERMINALS
15	6835	18" VACUUM SWITCH
16	5825	6" VACUUM SWITCH
17		DRIP PROOF COVER (NOT REPLACABLE)
	8980	MANIFOLD/PUMP REPAIR KIT (INCLUDES 6, 7, 15, 16 & 6887 DIAPHRAGM)

Post-it Fax Note

7871

Date 9/15/97 pages 1

To	Jim	From	Kelly
Co. Dept.	Duper	Co.	Sealand