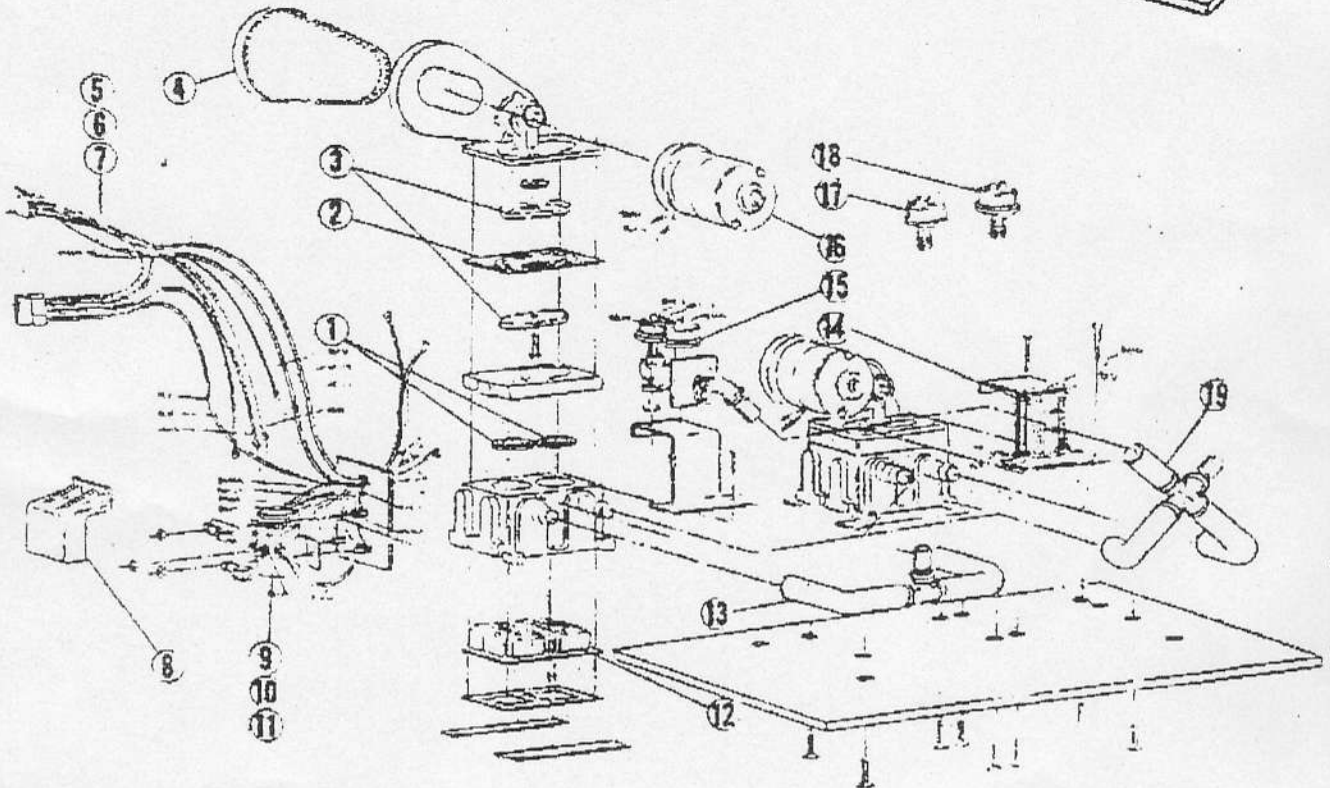
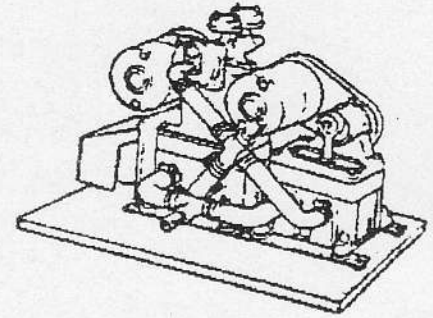


MANSFIELD VACU-FLUSH PUMP

REPLACEMENT PARTS LIST

MODEL NO.
32V/6062
12V/6061 - 24V/6100
DUAL VACUUM PUMPS



CHECK VALVE NOTE: Must purchase (2) 30004-0000 Kits and use only valves without pin hole from each Kit.

Note (Drip Proof Cover Not Shown)

COMPONENTS & PARTS LIST

(FOR PAR COMPONENTS NOT LISTED, SEE 36680 SERIES DATA SHEET)

KEY	PART NO.	DESCRIPTION	KEY	PART NO.	DESCRIPTION
SEE NOTE	1	6893 CHECK VALVES	14	6873	24/32V MINI CONVERTER
30016-0000	2	6894 DIAPHRAGM	15	6885	MANIFOLD ASSY. - COMPLETE
35212-0000	3	7220 BACKING PLATE ASSY. 30200-0000	16	6682	12V MOTOR WITH TERMINALS
30022-0000	4	6871 BELT 30200-0010	16	6899	24V MOTOR WITH TERMINALS
	5	6243 HARNESS - VAC PUMP 12V 30200-0020	16	5148	32V MOTOR WITH TERMINALS
	6-7	6734 HARNESS - VAC PUMP 24/32V	17	5835	VACUUM SWITCH 10"
	8	6239 TERMINAL BOARD COVER	18	5834	VACUUM SWITCH 6"
	9	5831 (12V) SOLENOID ASSY.	19	7223	HOSE CROSS ASSY.
	10	6900 (24V) SOLENOID ASSY.	20	6650	BLOCKING DIODE
	11	6530 (32V) SOLENOID ASSY.	21		DRIP PROOF COVER (NOT REPLACEABLE)
37178-0000	2	7221 SURGE CHAMBER		8980	MANIFOLD/PUMP REPAIR KIT (2 REQ'D.)
	13	7222 HOSE T ASSY.			