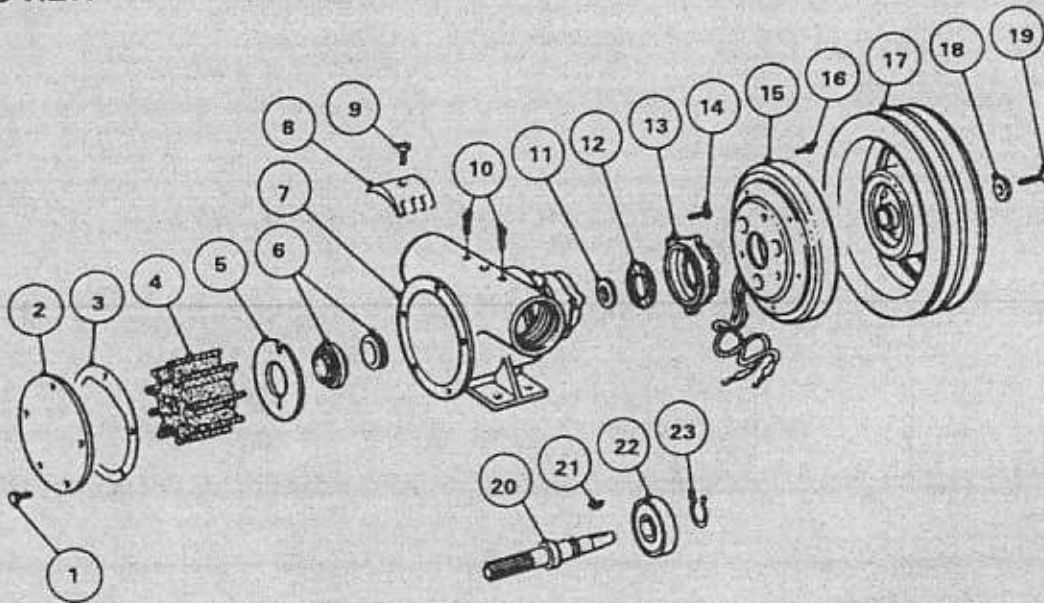




50080/50200 SERIES

EXPLODED VIEW



50080 SERIES

KEY	DESCRIPTION	QTY	PART No
1	Endcover Screw*	6	X3001-147F
2	Endcover	1	3993
3	Gasket*	1	890
4	Neoprene Impeller* or Nitrile Impeller**	1	17937-0001/0003
5	Wearplate	1	4156
6	Lip Seal (not shown)*	1	SP2700-1027
7	Body	1	50084-2000
8	Cam	1	934
9	Cam Screw	1	SP1004-09
10	Pipe Plug	2	SP2650-07
11	Slinger	1	3180
12	Inner Bearing Seal	1	SP2700-48
13	(Not Applicable)		
14	(Not Applicable)		
15	Field Coil (12v model)	1	SP2300-0063FC
	Field Coil (24v model)	1	SP2300-0064FC
16	Bolt	3	X3001-176F
17	Pulley (2A)	1	SP2300-0061RA
	Pulley (1B)	1	SP2300-0063RA
18	Screw	1	Supplied with clutch
19	Washer	1	
20	Shaft	1	50087-0000
21	Key	1	SP1401-10
22	Bearing	1	SP2600-06
23	Retaining Ring	1	SP1700-247

Service Kit SK405-0001 contains parts marked*
 Service Kit SK405-0003 contains parts marked* plus ** in place of 17937-0001

50200 SERIES

KEY	DESCRIPTION	QTY	PART No
1	Endcover Screw*	5	X3001-176F
2	Endcover	1	9336
3	Gasket*	1	816
4	Neoprene Impeller* or Nitrile Impeller**	1	17935-0001/836-0003
5	Wearplate	1	2574
6	Seal Assembly*	1	21849
7	Body	1	50204-2000
8	Cam	1	834
9	Cam Screw	1	SP1005-04
10	Pipe Plug	2	SP2650-07
11	Slinger	1	3181
12	Inner Bearing Seal	1	SP2700-50
13	Clutch Adaptor	1	52201-1000
14	Bolts	3	X3001-180F
15	Field Coil (12v model)	1	SP2300-0063FC
	Field Coil (24v model)	1	SP2300-0064FC
16	Bolt	3	X3001-174F
17	Pulley (2A)	1	SP2300-0061RA
	Pulley (1B)	1	SP2300-0063RA
18	Screw	1	Supplied with clutch
19	Washer	1	
20	Shaft	1	50207-0000
21	Key	1	SP1401-10
22	Bearing	1	SP2600-04
23	Retaining ring	1	SP1700-245

Service Kit SK407-0011 contains parts marked*
 Service Kit SK407-0003 contains parts marked* plus ** in place of 17935-0001

Inspect all parts for wear or damage and replace if necessary.

50080 SERIES

DIS-ASSEMBLY

1. Remove end cover screws, end cover and gasket.
2. Remove impeller.
3. Loosen cam screw and remove cam.
4. Remove wearplate.
5. Remove lip seal from body.
6. Remove bolt from end of shaft. Screw 5/8 UNC bolt into the hub of the pulley assembly in order to draw the pulley from the pump shaft.
7. Remove the 3 screws holding the field coil onto the housing adaptor.
8. Remove field coil.
9. Remove fixing bolts and rear housing adaptor from body.
10. Press shaft on impeller drive end to remove shaft and bearing from pump.
11. Remove bearing retaining ring from shaft.
12. Press shaft out of bearing supporting bearing inner race.
13. Remove inner bearing seal if it needs replacing.

ASSEMBLY

1. Press new seal into bearing end of body with lip facing away from bearing bore.
2. Press shaft into bearing supporting inner race of bearing. Fit bearing retaining ring onto shaft.
3. Position slinger in body drain area. Grease seal area of shaft. Push bearing and shaft into body by pressing on outer race of bearing.
4. Fit housing adaptor to pump with 3 bolts.
5. Fit field coil to adaptor using 3 screws. Check that centre bore of field coil fits over boss on the adaptor.
6. Wipe pump shaft to remove any particles and check location of key.
7. Slide pulley assembly onto shaft, lining up with key and secure with retaining bolt.
8. Fit lip seal into body with lip facing into impeller bore.
9. Fit wearplate.
10. Coat cam screw thread, top side and back of cam, with non setting jointing compound and fit into body, securing with the cam screw.
11. Lightly grease impeller bore and fit impeller.
12. Fit end cover and gasket and secure with screws.

50200 SERIES

DIS-ASSEMBLY

1. Remove end cover screws, end cover and gasket.
2. Remove impeller.
3. Loosen cam screw and remove cam.
4. Remove wearplate.
5. Remove seal assembly from shaft and from body.
6. Remove bolt from end of shaft. Screw 5/8 UNC bolt into the hub of the pulley assembly in order to draw the pulley from the pump shaft.
7. Remove the 3 screws holding the field coil onto the housing adaptor.
8. Remove field coil.
9. Remove fixing bolts and rear housing adaptor from body.
10. Press shaft on impeller drive end to remove shaft and bearing from pump.
11. Remove bearing retaining ring from shaft.
12. Press shaft out of bearing supporting bearing inner race.
13. Remove inner bearing seal if it needs replacing.

ASSEMBLY

1. Press new seal into bearing end of body with lip facing away from bearing bore.
2. Press shaft into bearing supporting inner race of bearing. Fit bearing retaining ring onto shaft.
3. Position slinger in body drain area. Grease seal area of shaft. Push bearing and shaft into body by pressing on outer race of bearing.
4. Fit housing adaptor to pump with 3 bolts.
5. Fit field coil to adaptor using 3 screws. Check that centre bore of field coil fits over boss on the adaptor.
6. Wipe pump shaft to remove any particles and check location of key.
7. Slide pulley assembly onto shaft, lining up with key and secure with retaining bolt.
8. Take new seal seat (cup rubber and seal seat), lightly grease the outside edge of cup rubber and press into cavity in pump body with ceramic facing towards impeller bore. Slide mechanical seal sub assembly over shaft until it engages against ceramic face of stationary seal.
9. Fit wearplate.
10. Coat cam screw threads, top side and back of cam, with non setting jointing compound and fit into body securing with the cam screw.
11. Lightly grease impeller bore and fit impeller.
12. Fit end over and gasket and secure with screws.

Refer to Operating Instructions on page 17.