

# PAR™

## ELECTRIC BILGE PUMPS

# MODEL 37201 - 0000

INTERMITTENT DUTY

# 37202 - Series

CONTINUOUS DUTY

### PRODUCT DATA



### INSTALLATION

#### MOUNTING

Mount upright in a dry location (above highest bilge water level) on a solid surface. Mounting screws should be tightened only enough to slightly compress grommets.

#### PLUMBING

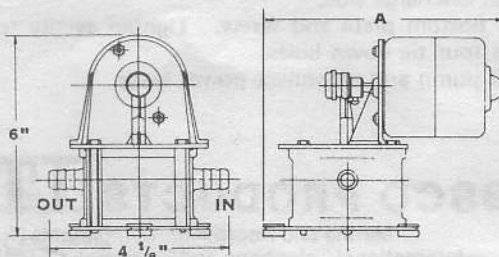
For intake and discharge use 3/4" I.D. non-collapsible hose. Keep intake and discharge lines free of kinks and restrictions. To protect pump from debris, use a 3/4" in-line strainer (PAR Model 36200-0000) in the intake line from the bilge. Use a 3/4" thru-hull fitting (PAR Model 59431-0000) for discharge.

#### WIRING

Wire pump in a circuit independent of all other electrical fixtures. Use stranded copper wire. Install fuse in positive circuit. See table for recommended wire and fuse size. See diagram for wiring connections. Use a 10 amp-rated switch (JABSCO 3-way switch Model 96070-0110).

After installation, it is recommended that voltage be checked at the motor terminals with motor operating under full load and all other appliances in the circuit operating. Be sure measured voltage is not less than 11 volts on a 12 volt system with a fully charged battery.

### DIMENSIONAL DRAWING



A MODEL 37201-0000 - 7"

A MODEL 37202 SERIES - 7 5/8"

### FEATURES

- Self-Priming
- Diaphragm Design Allows Dry Running
- Built-in Hydraulic Pulsation Dampener
- Corrosion Resistant Materials Throughout for Sea Water Service

### SPECIFICATIONS

<b>Open Flow:</b>	3.5 GPM For 37201-0000
	4.5 GPM For 37202-Series
<b>Vert. Dry Suction Lift:</b>	7 feet
<b>Ports:</b>	3/4" Slip-on Hose
<b>Weight:</b>	Model 37201-0000 - 5.0 Lbs. (2.3 kgs)
	Model 37202-Series - 5.5 Lbs. (2.5 kgs)

### STANDARD MODELS

Model	Voltage	Nominal Current	Fuse Size	
			Slo-Blo	Normal
37201-0000	12 VDC	5.5 AMP	6 1/4 AMP	8 AMP
37202-0000	12 VDC	7.5 AMP	8 AMP	10 AMP
37202-0010	24 VDC	6.5 AMP	7 AMP	10 AMP

### MAINTENANCE

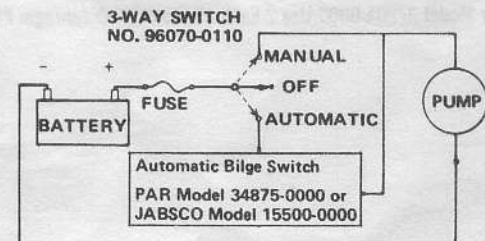
**LUBRICATION:** Check connecting rod bearing annually and add chassis lube as needed. No other lubrication of the pump is required.

**WINTER STORAGE:** When possible it is preferred that the complete pump be removed and stored in a warm dry place. If this is not possible the pump must be completely drained, hoses removed and pump run until all water is expelled.

### WIRING

Wire Length Between Battery and Motor	Model 37201-0000	Model 37202-Series
1 - 25 feet	12 AWG	12 AWG
25 - 50 feet	10 AWG	10 AWG

### WIRING DIAGRAM FOR AUTOMATIC OPERATION

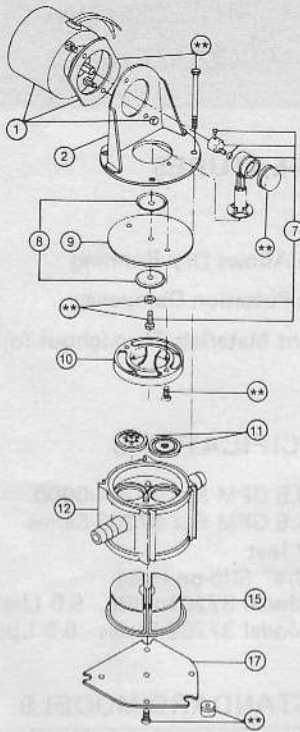


## JABSCO PRODUCTS **ITT**

Form 43000-0110 Rev. 10-77

MODEL 37201-0000  
MODEL 37202-SERIES

## EXPLODED VIEW



\*\*Indicates items included in Hardware Kit (Key 21).

## PARTS LIST

### 37201/37202-Series

Key	Part Description	Part Number	Qty
1	Motor Kit 12 Volt D.C.	30201-0000	1
1	Motor Kit 24 Volt D.C.	30200-0040	
2	Motor Mount	35797-0000	1
7	Connecting Rod Kit	30040-0000*	1
8	Diaphragm Plate	35688-0000—See Note 2	2
9	Diaphragm	37174-0000*	1
10	Retainer	35788-0000	1
11	Valve Set (Inlet & Outlet)	30005-0000*	1 Set
12	Base	35795-0000	1
15	Pulsation Dampener	37179-0000*	1
17	Bottom Plate	35798-0000	1
21	Hardware Kit	37168-0000	1 Set
	Service Kit*	37182-0000	

\*Indicates Parts Contained in Service Kit.

NOTE 1—For Model 37201-0000 Use Replacement Motor Number 30202-0000 (12 Volt Only).

NOTE 2—For Model 37201-0000 Use 2 Each 35983-0000 Diaphragm Plates.

## SERVICE

### TROUBLE SHOOTING

Problems	Causes
Loss of suction to pump.	- Air leak in suction line. - Bilge pickup not submerged. - Intake hose kinked or plugged. - Fouled intake or discharge valve. - Ruptured diaphragm.
Rough or noisy operation.	- Intake or discharge hose kinked or plugged. - Pump not mounted firmly. - Loosened eccentric set screw or worn connecting rod bearing. - Ruptured or collapsed pulsation dampener.

### VALVE REPLACEMENT

1. Turn off power to pump. Remove four tie down bolts.
2. Expose valves by lifting motor mount and the attached diaphragm assembly from pump base.
3. Remove and clean or replace valves.
4. Install valves, making sure rubber flapper is UP on intake and DOWN on discharge. Replace valve retaining plate.
5. Replace motor-mount-diaphragm assembly and fasten evenly to base with the four tie down bolts.

### DIAPHRAGM AND CONNECTING ROD REPLACEMENT

1. Turn off power to pump. Remove four tie down bolts.
2. Lift motor mount and the attached diaphragm assembly from pump base.
3. Remove two diaphragm retainer screws and the diaphragm retainer.
4. Pull connecting rod and diaphragm from eccentric and remove from motor mount, then, unscrew bolt to separate diaphragm and plates.
5. Check diaphragm for cuts and cracks. Check rod assembly bearing and eccentric for breaks, cracks or excessive wear. Replace if badly worn.
6. During reassembly, ensure that eccentric is firmly seated on motor shaft and set screw is tightened firmly against flat side of shaft.
7. Loosely reassemble diaphragm, diaphragm plates, washer and diaphragm bolt onto connecting rod. Slide connecting rod onto eccentric shaft with two thrust washers on shaft. Secure diaphragm to motor mount with the diaphragm retainer and two screws.
8. Tighten connecting rod bolt while maintaining alignment of rod bearing and eccentric. CAUTION: Avoid misalignment or twisting of rod on eccentric shaft or excessive bearing wear will result.

### PULSATION DAMPENERS REPLACEMENT

1. Disconnect power leads from pump and remove from mount. Remove four tie down bolts.
2. Remove bottom plate screw and the bottom plate. Pull out and replace pulsation dampener; position the 3-ribbed cavity on discharge side.
3. Replace bottom plate and screw. Tighten evenly to base with the four tie down bolts.
4. Reinstall pump and reconnect power leads.

# JABSCO PRODUCTS ITT

Marine and Recreation Components Division  
International Telephone and Telegraph Corporation  
1485 Dale Way, Costa Mesa, California 92626

Telephone: (714) 545-8251