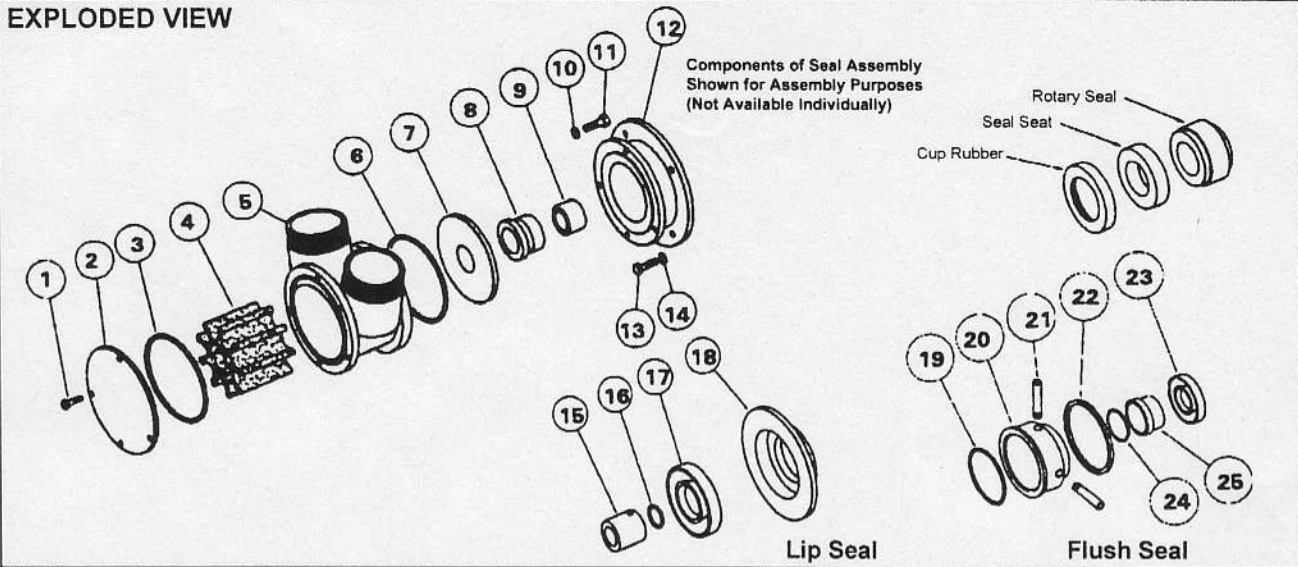


# Jabsco 28680 SERIES

## EXPLODED VIEW



| PARTS LIST                    |                |     | MODEL NUMBER WITH APPROPRIATE SEAL OPTIONS |             |   |             |              |
|-------------------------------|----------------|-----|--|-------------|---|-------------|--------------|
|                               |                |     | Std. Mech.                                 | H/F Mech.   | Lip Type                                      | H/F Flushed | Std. Flushed |
| Key                           | Description    | Qty | 28680-2125                                 | 28680-2225  | 28680-2425                                    | 28680-2725  | 28680-2925   |
| 1                             | Screw          | 4   | X3001-209F                                 | X3001-209F  | X3001-209F                                    | X3001-209F  | X3001-209F   |
| 2                             | Endcover       | 1   | 23975-0000                                 | 23975-0000  | 23975-0000                                    | 23975-0000  | 23975-0000   |
| 3                             | "O" Ring       | 1   | SP2000-1213                                | SP2000-1213 | SP2000-1213                                   | SP2000-1213 | SP2000-1213  |
| 4                             | Impeller*      | 1   | 21899-0005B                                | 21899-0005B | 21899-0005B                                   | 21899-0005B | 21899-0005B  |
| 5                             | Body           | 1   | 23974-2000                                 | 23974-2000  | 23974-2000                                    | 23974-2000  | 23974-2000   |
| 6                             | "O" Ring       | 1   | SP2000-1213                                | SP2000-1213 | SP2000-1213                                   | SP2000-1213 | SP2000-1213  |
| 7                             | Wearplate      | 1   | 28636-0000                                 | 28636-0000  | See Below                                     | 28636-0000  | 28636-0000   |
| 8                             | Seal Assembly* | 1   | 22644-6000                                 | 22644-6200  | See Below                                     | 22644-6200  | 22644-6000   |
| 9                             | Seal Spacer    | 1   | 28637-0000                                 | 28637-0000  | 28637-0000                                    | 28637-0000  | 28637-0000   |
| 10                            | Washer         | 4   | X3080-101F                                 | X3080-101F  | X3080-101F                                    | X3080-101F  | X3080-101F   |
| 11                            | Screw          | 4   | X3001-211F                                 | X3001-211F  | X3001-211F                                    | X3001-211F  | X3001-211F   |
| 12                            | Adaptor        | 1   | 22254-0020                                 | 22254-0020  | 22254-0020                                    | 22254-0020  | 22254-0020   |
| 13                            | Screw          | 4   | X3001-242F                                 | X3001-242F  | X3001-242F                                    | X3001-242F  | X3001-242F   |
| 14                            | Washer         | 4   | X3080-111F                                 | X3080-111F  | X3080-111F                                    | X3080-111F  | X3080-111F   |
| Lip Seal Kit No. & Contains   |                |     | -  | -           | 28631-0403B                                   | -           | -            |
| 15                            | Seal Spacer    | 1   | -  | -           | PART<br>NUMBERS<br>AVAILABLE<br>ON<br>REQUEST | -           | -            |
| 16                            | "O" Ring       | 1   | -  | -           |   | -           | -            |
| 17                            | Seal           | 1   | -  | -           |   | -           | -            |
| 18                            | Wearplate      | 1   | -  | -           |   | -           | -            |
| Flush Seal Kit No. & Contains |                |     | -  | -           | -   | 28632-0010B | 28632-0010B  |
| 19                            | "O" Ring       | 1   | -  | -           | -   | X4020-269A  | X4020-269A   |
| 20                            | Seal Housing   | 1   | -  | -           | -   | 28512-0000  | 28512-0000   |
| 21                            | Tube           | 2   | -  | -           | -   | 21844       | 21844        |
| 22                            | Adaptor Ring   | 1   | -  | -           | -   | 28626-0000  | 28626-0000   |
| 23                            | Seal           | 1   | -  | -           | -   | SP2701-0916 | SP2701-0916  |
| 24                            | "O" Ring       | 1   | -  | -           | -   | X4020-237A  | X4020-237A   |
| 25                            | Spacer         | 1   | -  | -           | -   | 28627-0000  | 28627-0000   |
| Service Kit Contains*         |                |     | SK315                                      | SK315-0225  | SK315-0425                                    | SK315-0225  | SK315        |

## SERVICE INSTRUCTIONS

### Dis-Assembly

1. Remove screws (1), endcover and "O" ring (3). Remove screw (11) and washer (10) and slide off body complete with impeller. Push out impeller and "O" ring (6) from body.
2. Remove wearplate (7) and prise out seal seat and cup rubber.
3. Gently lever the spacer (9) and rotary seal off the shaft. REMOVAL OF THE FOLLOWING PARTS IS NOT NECESSARY FOR NORMAL SERVICING. HOWEVER, IF REQUIRED THEN AS FOLLOWS:
4. Remove screws (13) and washers (14) and slide off adaptor (12).

**Pumps With Lip Seal:-** Push out lip seal (17) from wearplate (18). Loosen set screws to remove spacer (15) and prise out "O" ring (16) from spacer.

**Pumps With Flush Seal:-** After removing rotary seal (6) unscrew tubes (21). Pull out seal spacer (25), and prise out "O" ring (24). Pull out seal housing (20) and remove "O" ring (19) and then press out lip seal (23) from it. It is not necessary to remove adaptor ring (22).

### Assembly

1. Slide seal spacer (9) on shaft and then smear shaft with oil and push rotary seal gently until it touches the spacer.
2. Fit adaptor (12) to motor-face with screws (13) and washers (14).
3. Fit cup rubber and seal seat to wearplate and slide it into position.
4. Fit impeller into lubricated body with a twisting motion in the same rotation as motor. Fit "O" ring (6) into body and slide it into position over shaft.
5. Align wearplate and body with adaptor and secure with screws (11) and washers (10). Do not overtighten, a gap between adaptor and body is normal. These screws and endcover screws should be tightened to a torque of 13.5 Nm.
6. Fit "O" ring (3) into body and place endcover over body and secure with screws (1).

**Pumps With Lip Seal:-** Fit "O" ring (16) into seal spacer (15) and smear spacer and shaft with lubricating oil. Slide spacer (15) over shaft and secure with set screws to dimension shown (0) i.e. flush with wearplate. Press lip seal (17) into wearplate (18) and slide into position over shaft, then follow on from step (4) above.

**Pumps With Flush Seal:-** Fit "O" ring (24) under seal spacer (25) and smear both spacer and shaft with oil and slide spacer up to shaft shoulder. Fit adaptor ring (22) into adaptor. Press lip seal (23) into seal housing (20) and slide into position. Fit tubes (21) sealing with PTFE tape. Rotary seal and "O" ring (19) can now be fitted. Then follow on from step (4) above.

Inspect all parts for wear or damage and replace if necessary.

## INSTALLATION DRAWING

