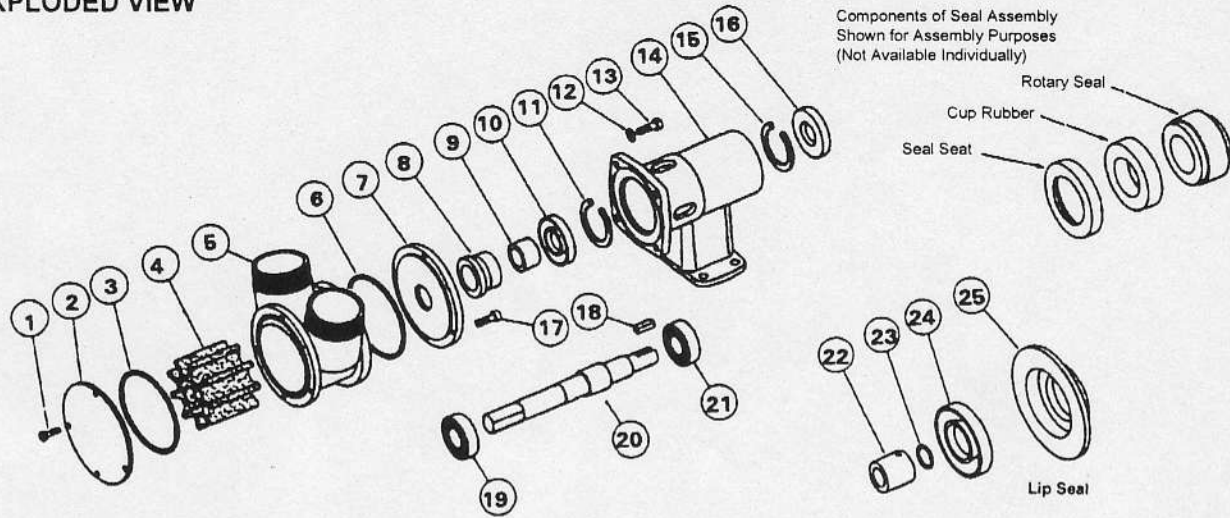


Jabsco 28630 SERIES

EXPLODED VIEW



| PARTS LIST | | | MODEL NUMBER WITH APPROPRIATE SEAL OPTIONS | | |
|-----------------------------|-----------------|-----|--|-------------|-----------------------------------|
| | | | Std. Mech. | H/F Mech. | Lip Type |
| Key | Description | Qty | 28630-2125 | 28630-2225 | 28630-2425 |
| 1 | Screw | 4 | X3001-209F | X3001-209F | X3001-209F |
| 2 | Endcover | 1 | 23975-0000 | 23975-0000 | 23975-0000 |
| 3 | "O" Ring* | 1 | SP2000-1213 | SP2000-1213 | SP2000-1213 |
| 4 | Impeller* | 1 | 21899-0005B | 21899-0005B | 21899-0005B |
| 5 | Body | 1 | 23974-2000 | 23974-2000 | 23974-2000 |
| 6 | "O" Ring* | 1 | SP2000-1213 | SP2000-1213 | SP2000-1213 |
| 7 | Wearplate | 1 | 28635-0000 | 28635-0000 | See Below |
| 8 | Seal Assembly* | 1 | 22644-6000 | 22644-6200 | See Below |
| 9 | Spacer | 1 | 28638-0000 | 28638-0000 | 28638-0000 |
| 10 | Seal | 1 | SP2701-0912 | SP2701-0912 | SP2701-0912 |
| 11 | Retaining Ring | 1 | SP1701-437 | SP1701-437 | SP1701-437 |
| 12 | Washer | 4 | X3080-101F | X3080-101F | X3080-101F |
| 13 | Screw | 4 | X3001-209F | X3001-209F | X3001-209F |
| 14 | Bearing Housing | 1 | 28503-0000 | 28503-0000 | 28503-0000 |
| 15 | Retaining Ring | 1 | SP1701-437 | SP1701-437 | SP1701-437 |
| 16 | Seal | 1 | SP2701-0930 | SP2701-0930 | SP2701-0930 |
| 17 | Screw | 4 | X3007-209F | X3007-209F | X3007-209F |
| 18 | Key | 1 | X4000-487A | X4000-487A | X4000-487A |
| 19 | Bearing | 1 | SP2601-23 | SP2601-23 | SP2601-23 |
| 20 | Shaft | 1 | 28607-0000 | 28607-0000 | 28607-0000 |
| 21 | Bearing | 1 | SP2601-0460 | SP2601-0460 | SP2601-0460 |
| Lip Seal Kit No. & Contains | | | - | - | 28631-0403B |
| 22 | Seal Spacer | 1 | - | - | PART NUMBERS AVAILABLE ON REQUEST |
| 23 | "O" Ring* | 1 | - | - | |
| 24 | Seal* | 1 | - | - | |
| 25 | Wearplate | 1 | - | - | |
| Service Kit Contains* | | | SK315 | SK315-0225 | SK315-0425 |

SERVICE INSTRUCTIONS

Dis-Assembly

1. Remove screws (1), endcover and "O" ring (3). Remove screws (13) and washers (12) and then slide off body complete with impeller and wearplate.
2. Remove seal seat and cup rubber from wearplate and then remove screws (17) and push out impeller and "O" ring (6).
3. Gently lever the seal spacer (9) and rotary seal off the shaft.
4. Prise out seal (16) and remove retaining ring (15) and carefully withdraw the shaft and bearing assembly. Remove retaining ring (11) and push out seal (10).
5. To remove bearings from shaft an arbor press is required, alternatively a bearing extractor may be used. Support inner race of bearing and apply a steady pressure on the shaft until bearing is free. Repeat this procedure to remove the other bearing.

Pumps with Lip Seal:- Push out lip seal (24) from wearplate (25). Loosen set screw to remove seal spacer (22) from the shaft. Prise out "O" ring (23) from seal spacer.

Assembly

1. To fit bearings onto shaft:- Support inner race of bearing and press shaft until bearing locates against the shoulder. Repeat this procedure for other bearing.
2. Fit retaining ring (11) and lip seal (10) ensuring that the spring on seal is facing outwards.
3. Fill the bearings with grease, and the space between the bearings until two thirds full. Smear grease on the shaft where the lip seal locates. Push shaft and bearing assembly into bearing housing. Fit retaining ring (15) and seal (16) with spring facing outwards.
4. To fit seal:- Smear shaft with lubricating oil and slide seal spacer (9) up to the shoulder on shaft. Push rotary seal gently until it touches the spacer. Fit cup rubber and seal into the wearplate (17).
5. Fit impeller into lubricated body with a twisting motion in the same rotation as motor. Fit "O" ring (6) into body and then fit wearplate assembly over body and secure with screws (17).
6. Slide body assembly over the shaft and secure to bearing housing with screws (13) and washers (12). Do not overtighten. All these and endcover screws should be tightened to a torque of 13.5 Nm.
7. Fit "O" ring (3) into body and place endcover over body then secure with screws (1).

Pumps with lip Seal:- Ensure that the "O" ring (23) is fitted under seal spacer (22). Smear seal spacer and shaft with lubricating oil. Slide spacer over shaft and secure with set screw to dimension shown i.e. flush with the wearplate. Press lip seal (24) into wearplate (25). Then follow on from step (5) above.

Inspect all parts for wear or damage and replace if necessary.

INSTALLATION DRAWING

