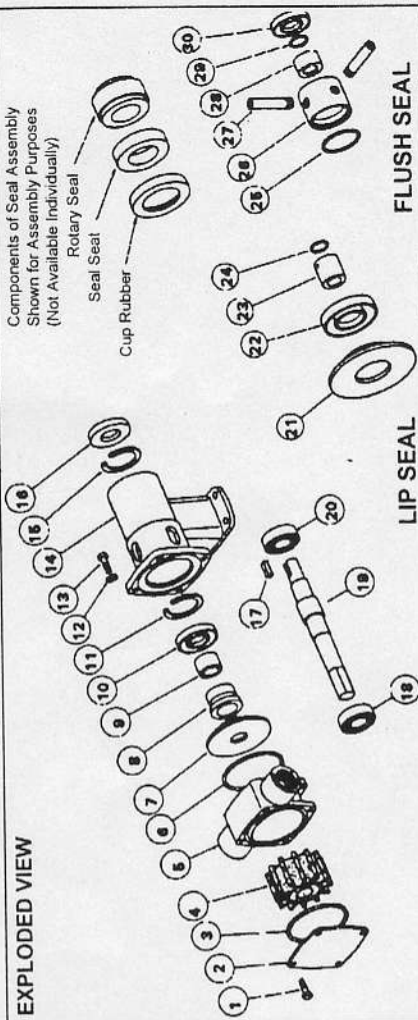


# Jabsco 28330 SERIES



## SERVICE INSTRUCTIONS

### Dis-Assembly

1. Remove screws (1), endcover and "O" ring.
2. Remove screws (13). Slide off body complete with impeller and wearplate.
3. Remove seal seal, cup rubber from the wearplate and push out impeller and "O" ring from body.
4. Gently lever the seal spacer and seal (8) off the shaft.
5. Prise out seal (16). Remove retaining ring (15) and carefully withdraw shaft and bearing assembly. Remove retaining ring (11) and push out seal (10).
6. To remove bearings from shaft an arbor press is required alternatively a bearing extractor may be used. Support inner race of bearing then apply a steady pressure on shaft until bearing is free. Repeat this procedure to remove other bearing.

### PUMPS WITH LIP SEAL:-

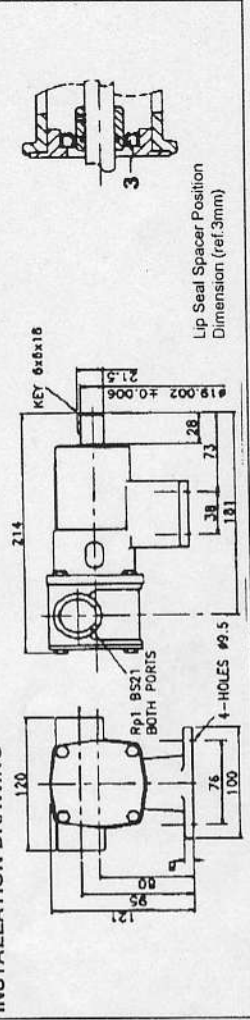
1. Push out lip seal (22) from wearplate (21). Loosen set screw to remove seal spacer (23). Prise out "O" ring (24) from seal spacer.
2. PUMPS WITH FLUSH SEAL:- After pulling out rotary seal, unscrew tubes (27) and pull out seal housing (26). Remove seal spacer (26) and prise out "O" ring (29). Remove "O" ring (25) and lip seal (30) from seal housing.

### Assembly

1. To fit bearings onto shaft - Support inner race of bearing and press the shaft until bearing locates against the shoulder. Repeat procedure for other bearing.
2. Fit retaining ring (11) and lip seal (10) ensuring that spring on seal is facing outwards.
3. Fill the bearings with grease, and the space between bearings two thirds full. Smear grease on the shaft where lip seal locates. Push shaft and bearing assembly into bearing housing - Fit retaining ring (15) and seal (16) with spring facing outwards.
4. To fit seal - Smear shaft with lubricating oil and slide seal spacer (19) up to the shoulder on shaft. Push rotary seal gently until it touches the spacer. Fit cup rubber and seal into wearplate (7). Slide wearplate assembly over the shaft.
5. Fit impeller into lubricated body with twisting motion in the same rotation as motion. Fit "O" ring (6) into body and slide over shaft.
6. Align wearplate and body into bearing housing and secure with screws (13) and washers (12). Do Not overtighten, a gap between bearing housing and body is normal. These screws and endcover screws should be tightened to a torque of 3.4 Nm.
7. Fit "O" ring (3) into body and place endcover over body and secure with screws (1). PUMPS WITH LIP SEAL:- Ensure "O" ring (24) is fitted under seal spacer (23). Smear seal spacer and shaft with lubricating oil. Slide spacer over shaft from step 5 above.
8. PUMPS WITH FLUSH SEAL:- Ensure "O" ring (29) is fitted under seal spacer (26). Smear seal spacer and shaft with lubricating oil. Slide spacer over shaft up to shoulder. Press lip seal (30) into seal housing (26) and slide into position over shaft. Fit tubes (27) sealing with PTFE tape. Rotary seal and "O" ring (25) can now be fitted. Follow on from step (5) above.

Inspect all parts for wear or damage and replace if necessary.

## INSTALLATION DRAWING



PARTS LIST	STANDARD PRESSURE IMPELLER		HIGH PRESSURE IMPELLER	
	Qty	Part No.	Part No.	Part No.
1 Screw	4	X3001-176F	X3001-176F	X3001-176F
2 Endcover	1	X4020-269A	X4020-269A	X4020-269B
3 "O" Ring*	1	X4020-269A	X4020-269A	X4020-269B
4 Impeller	1	14282-0001B	14282-0004B	8840-0024B
5 Body	1	28334-2000	28334-2000	28334-2000
6 "O" Ring*	1	X4020-269A	X4020-269A	X4020-269B
7 Wearplate (2)	1	28336-0000	28336-0000	28336-0000
8 Seal Assy (2)	1	28331-0103B	28331-0104B	28331-0104B
9 Seal Spacer (1)	1	28317-0000	28317-0000	28317-0000
10 Lip Seal	1	SP2701-0910	SP2701-0910	SP2701-0910
11 Retaining Ring	1	SP1701-438	SP1701-438	SP1701-438
12 Washer	4	X3080-091F	X3080-091F	X3080-091F
13 Screw	4	X3001-180F	X3001-180F	X3001-180F
14 Bearing Housing	1	28303-0000	28303-0000	28303-0000
15 Retaining Ring	1	SP1701-438	SP1701-438	SP1701-438
16 Lip Seal	1	SP2701-0910	SP2701-0910	SP2701-0910
17 Key	1	X4000-130A	X4000-130A	X4000-130A
18 Bearing	1	SP2601-33	SP2601-33	SP2601-33
19 Shaft	1	28307-0000	28307-0000	28307-0000
20 Bearing	1	SP2601-33	SP2601-33	SP2601-33
Service Kit Contains*	1	SK377-0101	SK377-0104	SK377-0124
Other Seal Options				
Model No. With HIF Seal		28330-2201	28330-2203	28330-2204
Model No. With Lip Seal		28330-2401	28330-2403	Not Available
Model No. With HIF Seal Flushed		28330-2701	28330-2703	28330-2724
Model No. With Standard Seal Flushed		28330-2901	28330-2903	28330-2924
Parts For Appropriate Seal Conversion				
HIF Seal Assy	1	28331-0203B	28331-0203B	28331-0204B
Lip Seal Kit No. & Contains		28331-0403B	28331-0403B	28331-0403B
Wearplate	1	28365-0000	28365-0000	28365-0000
Lip Seal	1	SP2701-0914	SP2701-0914	SP2701-0914
Seal Spacer	1	28365-0011	28365-0011	28365-0011
"O" Ring	1	X4020-217A	X4020-217A	X4020-217A
Flush Seal Kit No. & Contains		28332-0000B	28332-0000B	28332-0000B
"O" Ring	1	X4020-244A	X4020-244A	X4020-244A
Seal Housing	1	28312-0000	28312-0000	28312-0000
Tube	2	21844	21844	21844
Seal Spacer	1	28317-0001	28317-0001	28317-0001
"O" Ring	1	X4020-217A	X4020-217A	X4020-217A
Seal	1	SP2701-0914	SP2701-0914	SP2701-0914

(1) Key 9 Not Required For Models With Lip Seal And Flush Seal. (2) Key 7 & 8 Not Required For Lip Seal Models