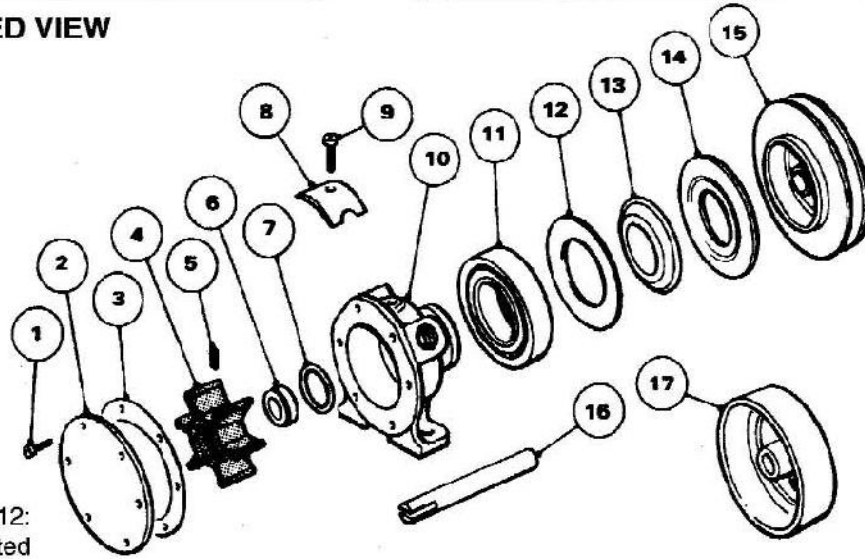


EXPLODED VIEW



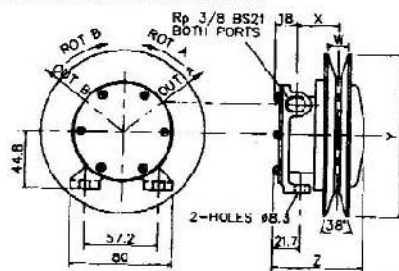
Note Key 7:12:
no longer fitted

PARTS LIST

| Key | Description | Qty | Part No |
|-----|------------------------------------|-----|-----------|
| 1 | Endcover Screws* | 6 | SP1002-02 |
| 2 | Endcover | 1 | 3992 |
| 3 | Gasket* | 1 | 2995-0030 |
| 4 | Impeller* | 1 | 673-0001B |
| 5 | Impeller Screw* | 1 | SP1010-06 |
| 6 | Seal* | 1 | SP2700-05 |
| 7 | "O" Ring* | 1 | SP2000-43 |
| 8 | Cam: 2620-200,-252,-253 | 1 | 2907-0001 |
| | 1/2 Cam: 2620-254,-255 | | 2441 |
| 9 | Cam Screw 2620-200, 252, 253 | 1 | SP1002-09 |
| | 1/2 Cam Screw 2620-254,-255 | | SP1010-06 |
| 10 | Body | 1 | 2438-200 |
| 11 | Ball Bearing | 1 | SP2500-09 |
| 12 | Rotating Shield | 1 | 1161 |
| 13 | Stationary Slinger | 1 | 1554 |
| 14 | Bearing Shield | 1 | 3078 |
| 15 | Pulley: 2620-252,-254 | 1 | 10759 |
| | Pulley: 2620-253,-255 | | 9487-03 |
| 16 | Shaft: 2620-200 | 1 | 688-21-24 |
| | Shaft: 2620-252,-253,-254 -255 | | 355-07-24 |
| 17 | Bearing Housing 2620-200 (only) | 1 | 345 |

Service Kit SK20 Contains Parts marked *

INSTALLATION DRAWING



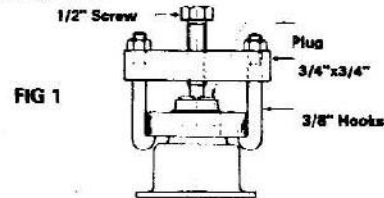
| Model | W | X | Y | Z |
|----------|------|------|-----|------|
| 2620-252 | 13.3 | 32.5 | 127 | 68.3 |
| 2620-253 | 16.6 | 24 | 159 | 71 |
| 2620-255 | 16.6 | 24 | 159 | 71 |

Note: 2620-200
Overall Dimensions
L: 101mm, W: 88mm, H: 100mm
For detailed information contact distributor or factory

SERVICE INSTRUCTIONS

Dis-Assembly Inspect all parts for wear or damage and replace if necessary

1. Remove endcover screws, endcover and gasket.
2. Remove impeller.
3. Remove seal, seal spacer and "O" ring using two pieces of hooked wire.
4. Loosen cam screw, remove cam, (clean off any old jointing compound).
5. Remove pulley from bearing, heating o.d. of pulley uniformly with a gas flame.
6. Remove stationary slinger and rotating shield.
7. Remove bearing (see fig 1). Attach two forks on bearing 180 degrees apart. Tighten extractor screw against plug, extracting bearing. Plug should be solid steel 7/8" o.d. x 9/16" long with one end slightly countersunk to match extractor screw.
8. Remove bearing shield.



Assembly

1. Install bearing shield over bearing shoulder with lip facing away from pump body.
2. Press bearing on body until it bottoms. Note: Press on inner race of bearing whilst supporting the pump at the impeller end.
3. Install rotating shield with dimple facing away from bearing. Install stationary slinger with recess away from bearing.
4. Heat pulley to approximately 135°C in oven and drop over bearing. Pulley will immediately shrink upon contact with bearing therefore it must be positioned quickly. Take care not to "cock" the housing. Apply slight pressure to the pulley whilst cooling. Note: An ordinary domestic oven can be used. Approximately 10-15 minutes in oven at full power will usually heat the housing sufficiently.
- 4a. If shaft was removed, support pulley on a suitable fixture and a new shaft in a suitable bush in the pump body. Press shaft into correct position.
5. Coat cam screw threads and top of cam with a non setting compound. Install in body.
6. Fit "O" ring and seal spacer. Note: If original shaft is being refitted and shaft is worn do not replace seal spacer.
7. Lightly grease shaft. Place seal over shaft, using a rotary motion to avoid cutting the seal lip with spring facing outwards. Make sure that the seal is pushed right home.
9. Install impeller assembly on shaft with a rotary motion until screw engages slot in shaft. Then push into bore.
10. Install gasket, endcover, and secure with endcover screws.