

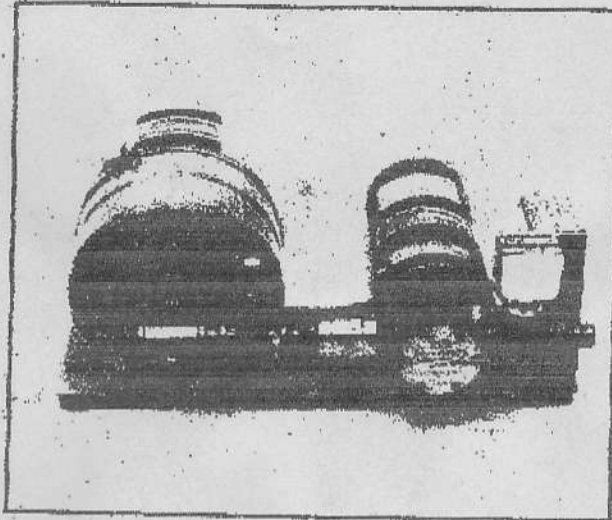
JABSCO®

Self-Priming Pumps

High Demand Water Pressure System

Models: 18800-1000 12 Vdc
 18800-1004 24 Vdc
 18800-1001 32 Vdc

DC Pressure Max Series Product Data



APPLICATION/PERFORMANCE

The Jabasco Pressure Max Series Automatic Water Systems are designed for the larger pleasure boat and the commercial vessel requiring up to 10 gallons of fresh water per minute, to service multiple fixtures both hot and cold. The integral pneumatic pressure tank eliminates rapid cycling and yields smooth flow and even temperature mix at showers. The electronic liquid sensor at the pump inlet monitors the presence of fresh water entering the water system and shuts down the dry system immediately.

The self-priming Jabasco flexible impeller bronze pump, in conjunction with the bronze check valve, assures fast priming and holding of static system pressure.

FEATURES

- Bronze Pump Head and Fittings
- Heavy Duty Sanitary Neoprene Impeller
- Ports are 3/4" Bronze Hose Barb
- Electronic Liquid Sensor Dry Tank Switch
- Prepressurized Pneumatic Accumulator Tank
- Encapsulated Pressure Switch
- High Capacity; Compact Size

SPECIFICATIONS

	U.S. GPM	Litres/Min
Flow:	10 @ 19 p.s.i.	37,8 @ 131 kPa
Cut-In Pressure:	18 ± 4 p.s.i.	125 kPa Nominal
Cut-Out Pressure:	39 ± 4 p.s.i.	265 kPa Nominal
Vert. Dry Suction Lift:	10 ft. (3 m)	
Ports:	3/4" (19 mm) Bronze Hose Barb	
Shipping Weight:	35 lbs (16 kg)	

REGULATIONS

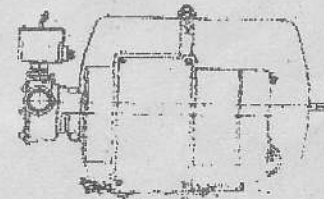
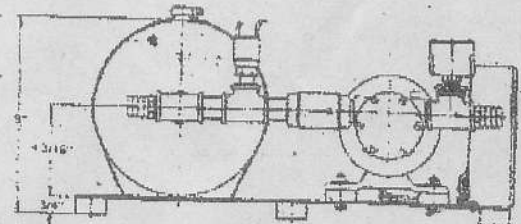
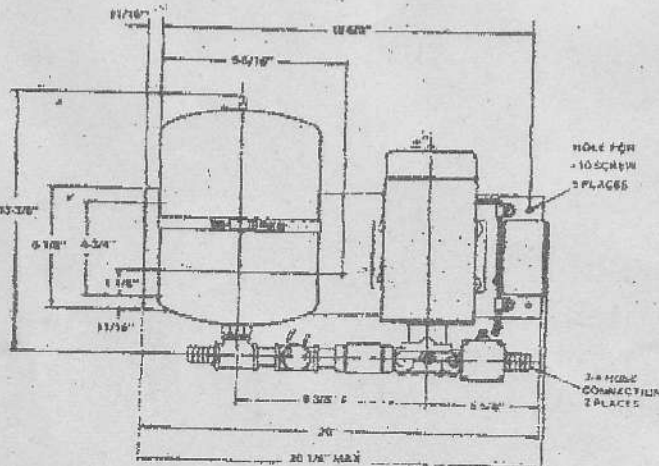
Meets Title 33, Chapter 1, Part 183, Subpart 1, United States Coast Guard Electrical Regulations, including paragraph 183.410 covering ignition protection.

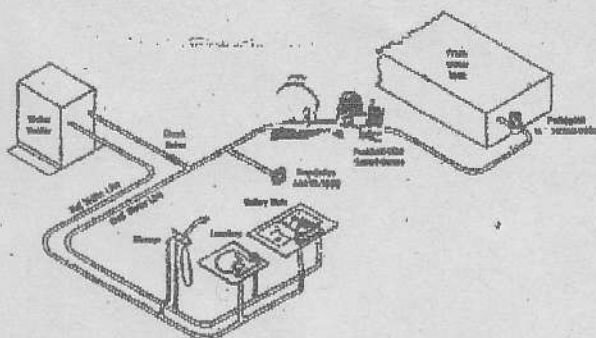
STANDARD MODELS

Model	Voltage	Amps	*Fuse/C.B.	Fuse/C.B. Quantity
18800-1000	12 Vdc	28-53	40 AMP MAN. RESET	1
18800-1004	24 Vdc	16-28	3AG/AGC25	1
18800-1001	32 Vdc	14-19	3AG/AGC20	1

*Fuse/C.B. is located inside the electrical hook up box. See Wiring Diagram.

Models: 18800-1000 12 Vdc
 18800-1004 24 Vdc
 18800-1001 32 Vdc



PLUMBING**MOUNTING**

The Pressure Max is self-priming. Mount above or below the fresh water tank on a solid surface using the five (5) rubber feet supplied. The mounting surface need not be level, but must be flat so no bending of the base plate exists.

CAUTION: IT IS IMPERATIVE THAT THE PUMP BE MOUNTED AWAY FROM SPRAY OR EXPOSED WATER. FAILURE TO DO SO COULD RESULT IN DAMAGE TO PUMP OR INJURY TO OPERATOR.

PLUMBING TANK TO PUMP

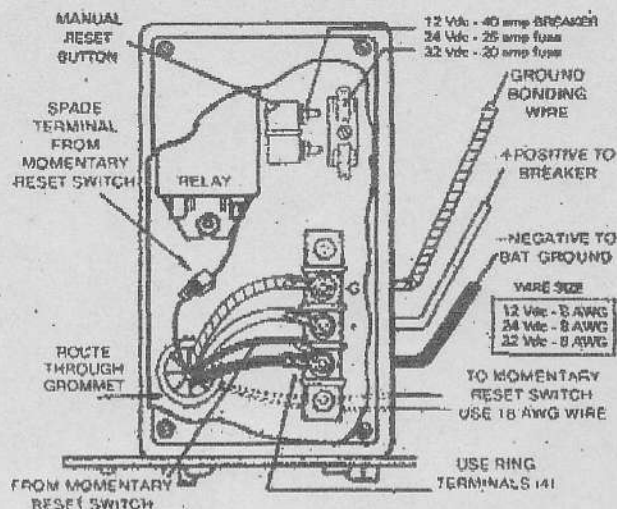
Freshwater Supply Line must be 3/4" I D non-collapsible or reinforced hose. All ball valves, gate valves and plumbing fittings must have 3/4" (19mm) I D (inside diameter). PAR "Pumpgard" 36200-0000 with 3/4" hose barbs should be installed to protect check valve from debris. Maximum supply line length should be limited to 20 feet (6m). Supply tank must be vented.

DRY TANK SENSOR RESET SWITCH WIRING

A momentary reset/priming switch will be required to complete the electrical wiring. For the convenience of the user, it is recommended that the switch (momentary toggle or push button) be located near the pump or pump power switch.

The switch does not carry high amp load. The switch will merely trigger the relay. Therefore the wiring may be 18 AWG marine grade wiring; and the switch may be light duty to 5 amp type.

- Run two (2) 18 AWG marine grade wires from a light duty to 5 amp type momentary toggle or push button switch to back of hookup box and route through grommet.
- Install a ring terminal on one lead and a spade terminal on the second.
- Connect spade terminal to free relay lead and ring terminal to terminal block. See instructions inside hookup box cover.

WIRING DIAGRAM**ELECTRICAL WIRING**

The Pressure Max Water System has a relatively high amperage draw and requires an adequate and independent electrical circuit. Refer to table below for wire size and supply circuit rating.

Model	Voltage	Wire AWG	Built-in Overload Protection	Maximum Recommended Wire Run*	Supply Circuit Rating
18800-1000	12 Vdc	8	40A Brkr.	15 Ft.	60 amps
18800-1004	24 Vdc	8	25A Fuse	25 Ft.	30 amps
18800-1001	32 Vdc	8	25A Fuse	25 Ft.	20 amps

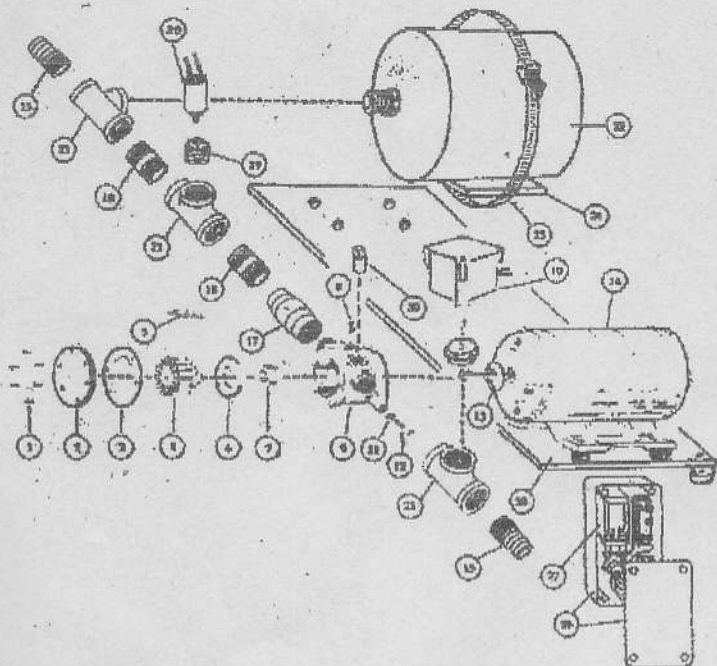
*Increase wire sizes for runs from power source to pump longer than shown.

Remove cover from electrical hookup box located next to pump motor. Referring to wiring diagram, feed properly sized wire through grommet in rear of box. Locate terminal block, cut wire to proper length and install ring terminals.

- Install bonding system ground to top terminal.
- Install positive (+) lead from distribution panel to center terminal.
- Install negative (-) lead from battery ground to bottom terminal.

EXPLODED VIEW

PARTS LIST



ASSEMBLY

10. Install slinger and position 1/4" from motor boss.
11. Press seal into seal bore with lip facing toward the impeller bore. Apply Petro-Gel grease to back of seal lip.
12. Install wearplate, aligning slot with dowel pin.
13. Permatex top of cam and cam screw threads. Install cam with cam screw.
14. Install body on motor. Tighten nut at clamp. Do not overtighten or binding of shaft will result. Reconnect wires.
15. Lubricate impeller bore with Petro-Gel grease or equivalent. Grease must be for Potable systems.
16. Lubricate shaft O D with grease, align drive ding in extended impeller insert with flat on shaft and install impeller.
17. Install gasket, end cover and end cover screws.
18. Install pressure tank and hold down strap.

Key	Description	Part Number	Qty.
1†	Screw (End Cover)	91002-0020	6
2†	End Cover	11830-0001	1
3†	Gasket	11816-0000	1
4†	Impeller, Neoprene	11815-0005	1
5†	Cam	490-1000	1
6†	Wearplate	2235-0000	1
7†	Seal (Shaft)	92700-0420	1
8†	Screw (Cam)	91003-0010	1
9†	Pump Assembly	18814-0000	1
10	Dry Tank Switch Kit 12V - 24V - 32V	18680-0000	1
11†	Nut (Body Clamp)	91105-0030	1
12†	Bolt (Body Clamp)	91095-0090	1
13	Slinger	6946-0000	1
14	Motor 12 Vdc	18753-0011	1
	Motor 24 Vdc	18753-0012	
	Motor 32 Vdc	18753-0013	
15	Port, 3/4 Brass	45581-0075	2
17	Check Valve	18816-0000	1
18	Nipple, Brass 3/4 x close	18807-0000	2
19	Bushing, Brass	18807-0000	1
20	Pressure Switch	44814-0000	1
21	Tee, Brass 3/4	37240010	3
22†	Pressure Tank	18810-0000	1
23†	Band Clamp		1
24	Pad, Rubber	18307-0000	1
25	Feet, Kit of 5	18818-0000	1
26	Box & Cover	18819-0000	1
27	Relay 12V	18817-0000	1
	Relay 24V	18817-0002	1
	Relay 32V	18817-0001	1
28	Base Plate	18805-0000	1
29*	Service Kit	90269-0001	
30	Plug	92650-0070	

*Parts contained in Service Kit
†Parts included with pump assembly
‡Parts included with pressure tank

THE PRODUCT DESCRIBED HEREIN IS SUBJECT TO A LIMITED WARRANTY, WHICH IS AVAILABLE FOR YOUR INSPECTION UPON REQUEST.

ITT JABSCO

International Telephone and Telegraph Corporation
1485 Dale Way, Costa Mesa, California 92626
Telephone: (714) 545-8251