

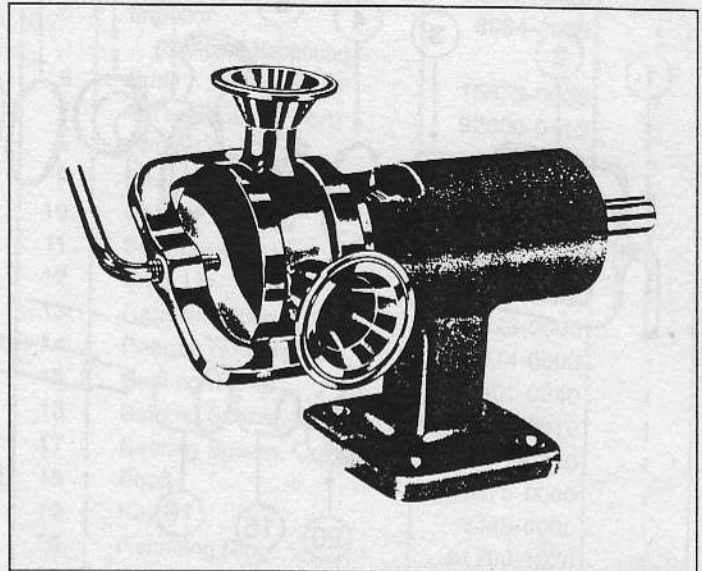


**Models: 15510-9775**  
**15530-9775**  
**15550-9775**  
**15570-9765**

## JABSCO SANITARY PUMPS

### FEATURES

**Body:** Type 316 Stainless Steel  
**Impeller:** Jabsco Neoprene Compound  
**Shaft:** Type 316 Stainless Steel  
**Seal:** Mechanical, Carbon-on-Ceramic, Nitrile  
**Bearings:** Roller and Ball Bearings  
**Ports:** 1-1/2" or 2" Clamp Type  
**Weight:** 15510-Series 9 lb (approx.)  
 15530-Series 15 lb (approx.)  
 15550-Series 21 lb (approx.)  
 15570-Series 39 lb (approx.)



### VARIATIONS AVAILABLE

VARIATION	10 GPM	25 GPM	50 GPM	100 GPM
Port Size	1-1/2"	1-1/2"	2"	2"
Neoprene Impeller and Clamp Ports	15510-9775	15530-9775	15550-9775	15570-9765

### APPLICATIONS AND OPERATING INSTRUCTIONS

Some of the many diverse products handled by Jabsco pumps include: DAIRY PROCESSING - Buttermilk, Condensed Milk, Cream, Milk Whey, Eggs and other assorted dairy products. FOOD PROCESSING - Sugar Liquors, Brines, Catsup, Chocolate, Glaze, Gelatin, Honey, Jams, Jellies, Mayonnaise, Molasses, Mustard, Pickle Relish, Vinegar, Water, Yeast Slurries. BEVERAGE PROCESSING - Alcohols, Beers, Brewery Slop, Cider, Distillery Wort, Extracts, Flavors, Juice, Mash, Soft Drinks, Wines. MISCELLANEOUS - Chemicals, Cosmetics, Pharmaceuticals.

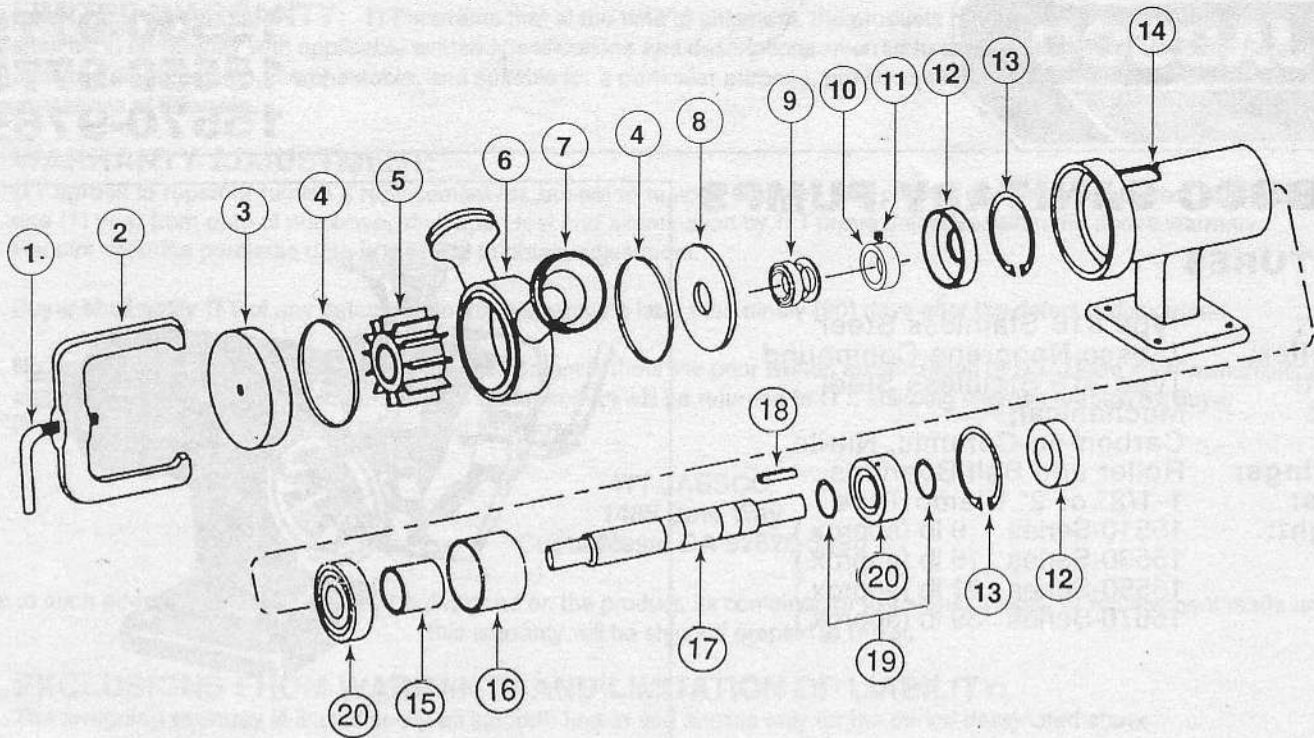
- INSTALLATION** - Pump may be mounted in any position. The rotation of the pump shaft determines the locations of the pump's intake and discharge ports; refer to dimensional drawing. Pump is normally assembled at factory for clockwise rotation (looking at end cover). If counter clockwise rotation is desired, follow steps 1, 2 & 3 of disassembly and steps 3, 4 & 5 of assembly instructions to change direction of impeller blade deflection under cam. Before use, rotate pump shaft in direction of operating rotation.
- DRIVE** - Belt or Direct.  
**BELT** - Proper belt tension will insure optimum performance, bearing and belt life.  
**DIRECT** - Clearance should be left between drive shaft and pump shaft when installing coupling. Mount and align pump and drive shaft before tightening set screw. Flexible coupling usually desirable.
- SPEEDS** - 100 RPM to maximum shown in performance table. Speed determines pump capacity. For maximum pump life, operate at lowest possible speeds. Refer to the viscosity/speed chart for maximum allowable speeds.
- SELF-PRIMING** - Primes at low or high speeds. For vertical dry suction lift of 10 feet, a minimum of 1,000 RPM is required. Pump can produce up to 20 feet of lift when wetted. **INTAKE LINES MUST BE AIRTIGHT** to prevent product foaming and to assure self-priming. Self-priming is reduced when pumping higher viscosity fluids. Consult factory.
- RUNNING DRY** - The impeller is lubricated by the product being pumped. **DO NOT RUN DRY** for more than 30 seconds. Lack of liquid may damage the impeller.
- TEMPERATURES** - 40 F - 150 F. Contact factory for impeller recommendation on applications outside this range.
- PRESSURES** - Consult performance chart. Line losses due to product viscosity must be considered when calculating operating pressures.

NOTE: Capacitor type motor is required.



**WARNING** Injury hazard. Exposed pulleys and belts can cause injury. Install shield around pulleys and belts. Stay clear while machinery is operating.

## EXPLODED VIEW



### PARTS LIST

#### MODEL 15510-9775

KEY	DESCRIPTION	PART #	QTY.
1	Clamp Screw	10408-0010	1
2	Clamp	12695-0000	1
3	End Cover	15511-0000	1
4	O-Ring	92000-1403	2
5	Impeller (High Pressure Neoprene)	8980-0005	1
6	Body	15513-0000	1
7	O-Ring (Clamp Port)	92000-0710	2
8	Wearplate	15512-0000	1
9	Seal, Mechanical	96080-0557	1
10	Collar	15516-0000	1
11	Set Screw	91084-0320	2
12	Seal, Lip	92701-0110	2
13	Retaining Ring	18729-0000	2
14	Bearing Housing	15514-0000	1
15	Bearing Spacer, Inner	10693-0020	1
16	Bearing Spacer, Outer	10449-0020	1
17	Shaft	15515-0000	1
18	Key	9215-0000	1
19	Retaining Ring	91700-2470	2
20	Bearing (Ball)	92601-0476	2

#### MODEL 15530-9775

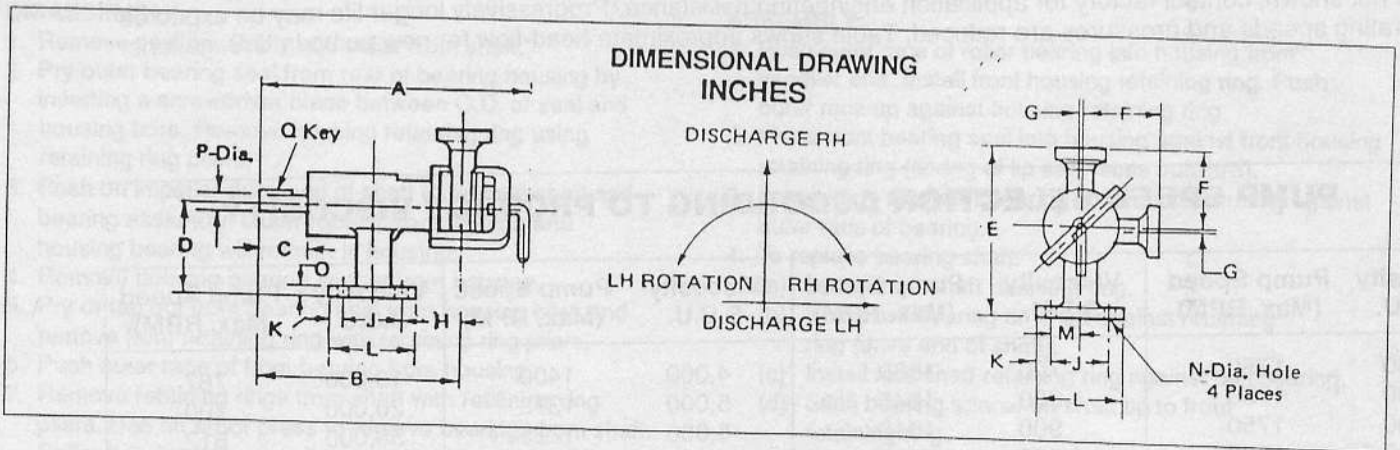
KEY	DESCRIPTION	PART #	QTY.
1	Clamp Screw	9551-0010	1
2	Clamp	12698-0000	1
3	End Cover	15531-0000	1
4	O-Ring	92000-1418	2
5	Impeller (Standard Neoprene)	8981-0005	1
6	Body	15533-0000	1
7	O-Ring (Clamp Port)	92000-0710	2
8	Wearplate	15532-0000	1
9	Seal, Mechanical	96080-0557	1
10	Collar	15536-0000	1
11	Set Screw	91084-0320	2
12	Seal, Lip	92701-0170	2
13	Retaining Ring	91701-0260	2
14	Bearing Housing	15534-0000	1
15	Bearing Spacer, Inner	10428-0020	1
16	Bearing Spacer, Outer	10525-0020	1
17	Shaft	15535-0000	1
18	Key	9215-0000	1
19	Retaining Ring	91700-0980	2
20	Bearing (Ball)	92601-0477	2

### MODEL 15550-9775

KEY	DESCRIPTION	PART #	QTY.
1	Clamp Screw	10697-0010	1
2	Clamp	12996-0000	1
3	End Cover	15551-0000	1
4	O-Ring	92000-1419	2
5	Impeller (High Pressure Neoprene)	8983-0005	1
6	Body	15553-0000	1
7	O-Ring (Clamp Port)	92000-0410	2
8	Wearplate	15552-0000	1
9	Seal, Mechanical	96080-0559	1
10	Collar	15556-0000	1
11	Set Screw	91084-0320	2
12	Seal, Lip	92702-0780	2
13	Retaining Ring	18706-0000	2
14	Bearing Housing	15554-0000	1
15	N/A		
16	Bearing Spacer, Inner	10539-0010	1
17	Bearing Spacer, Outer	10291-0010	1
18	Shaft	15555-0000	1
19	Key	9214-0000	1
20	Retaining Ring	91700-1180	1
21	Bearing (Ball)	18753-0007	2

### MODEL 15570-9765

KEY	DESCRIPTION	PART #	QTY.
1	Clamp Screw	18024-0000	1
2	Clamp	12927-0000	1
3	End Cover	15571-0000	1
4	O-Ring	92000-1420	2
5	Impeller (Standard Neoprene)	8984-0005	1
6	Body	15573-0000	1
7	O-Ring (Clamp Port)	92000-0410	2
8	Wearplate	15572-0000	1
9	Seal, Mechanical	96080-0561	1
10	Collar	15537-0000	1
11	Set Screw	91084-0320	2
12	Seal, Lip	92700-0870	2
13	Retaining Ring	18728-0000	2
14	Bearing Housing	15574-0000	1
15	Bearing (Roller)	92601-0240	1
16	Bearing Spacer, Inner	10378-0010	1
17	Bearing Spacer, Outer	10351-0010	1
18	Shaft	15575-0000	1
19	Key	8448-0000	1
20	Retaining Ring	91700-1370	1
21	Bearing (Ball)	92601-0230	1



MODEL	PORT	I.D.	A	B	C	D	E	F	G	H	J	K	L	M	N	O	P	Q
15510-SERIES	1 1/2 Clamp	1 1/16	10 1/4	7 9/16	1 3/4	3 1/2	6 1/4	2 3/4	1/8	2 1/4	2 1/4	1/2	3 1/4	1 1/8	13/32	3/8	5/8	3/16 x 3/16 x 1 1/8
15530-SERIES	1 1/2 Clamp	1	12 5/8	9 5/16	2 11/16	4 1/2	7 1/4	2 3/4	1/8	2 7/16	2 5/8	1/2	3 5/8	1 5/16	13/32	13/32	7/8	3/16 x 3/16 x 1 1/8
15550-SERIES	2 Clamp	1 1/4	13 3/4	10	2 7/8	4 1/2	7 7/8	3 3/8	1/16	3	2 5/8	1/2	3 5/8	1 5/16	13/32	7/16	1 1/8	1/4 x 1/4 x 1 1/2
15570-SERIES	2 Clamp	1 7/8	18 1/4	13 1/16	4 1/4	4 1/2	8 1/4	3 3/4	3/16	3 1/2	3	1/2	4	1 1/2	17/32	1/2	1 3/8	5/16 x 5/16 x 2

## HEAD CAPACITY TABLE

	TOTAL HEAD		500 RPM		1150 RPM		1750 RPM	
	PSI	Feet of Water	GPM	H.P.	GPM	H.P.	GPM	H.P.
<b>15510-SERIES</b> High Pressure	8.7	20	2.9	1/6	6.9	1/3	10.4	1/2
	17.3	40	2.7	1/6	5.2	1/3	8.7	1/2
	26.0	60	2.3	1/6	3.0	1/2	6.2	1/2
	34.6	80					4.0	3/4
<b>15530-SERIES</b> Standard Pressure	4.3	10	8.0	1/6	16.5	1/3	25.5	3/4
	8.7	20	7.5	1/4	16.0	1/3	24.6	3/4
	17.3	40	5.4	1/4	14.3	1/3	23.0	3/4
	26.0	60			12.8	1/2	21.0	1
	34.6	80				18.0	1	
<b>15550-SERIES</b> High Pressure	8.7	20	16.5	3/4	37.4	1-1/2	54.8	3
	21.6	50	15.5	3/4	36.8	2	53.7	3
	34.6	80	14.0	3/4	35.0	2	51.8	5
	47.6	110	12.5	1	32.7	2	48.5	5
	60.5	140			28.5	2	43.2	5
<b>15570-SERIES</b> Standard Pressure	8.7	20	25.5	3/4	73.0	2	102.0	3
	17.3	40	20.0	1	65.0	3	91.0	5
	21.6	50	17.0	1	61.0	3	84.0	5
	26.0	60			57.0	3	77.0	5
	30.3	70					67.0	5

Table shows approximate head-flow for new pump handling water. **Use capacitor start motor.** For operation at speeds not shown, contact factory for application engineering assistance. Progressively longer life may be expected as operating speeds and pressures are reduced. Table shows approximate head-flow for new pump in U.S. gallons.

## PUMP SPEED SELECTION ACCORDING TO PRODUCT VISCOSITY

Viscosity S.S.U.	Pump Speed (Max. RPM)	Viscosity S.S.U.	Pump Speed (Max. RPM)	Viscosity S.S.U.	Pump Speed (Max. RPM)	Viscosity S.S.U.	Pump Speed (Max. RPM)
50	1750	700	1680	4,000	1400	15,000	787
100	1750	800	1645	5,000	1312	20,000	700
200	1750	900	1610	6,000	1225	30,000	612
300	1750	1,000	1575	7,000	1138	40,000	525
400	1750	1,500	1540	8,000	1050	50,000	437
500	1750	2,000	1505	9,000	962	75,000	298
600	1715	3,000	1450	10,000	875	100,000	175

---

## SERVICE INSTRUCTIONS - ALL MODEL PUMPS ASSEMBLY AND DISASSEMBLY OF PUMP HEAD

---

Before using pump, it should be disassembled and cleaned to remove any dust and dirt resulting from storage or shipping. Wash parts in standard cleaning solutions approved for handling stainless steel. Thoroughly rinse before reassembly. **DO NOT USE IODINE BASED SANITIZERS** as the iodine attacks the elastomer materials used in the impeller.

All parts have been expertly machined and polished. **HANDLE WITH CARE. DO NOT DROP OR MISHANDLE.**

### DISASSEMBLY:

1. Remove end cover clamp, end cover and O-ring.
2. Grasp pump ports and slide pump body and impeller from shaft.
3. Remove O-ring and then push the impeller from the pump body.
4. Remove wearplate from pump.
5. Remove mechanical seal by sliding forward on shaft. Use extreme care not to mar shaft surface.

### ASSEMBLY:

1. Replace mechanical seal. Lightly lubricate shaft. Push on seal gently until it engages with collar, carbon face towards pump body.
2. Slide wearplate onto shaft until it mates with seal face.
3. Lubricate bore of pump body with Orange Solid Grease or suitable substitute and then replace impeller into pump body by twisting and pushing at the same time.
4. Lubricate and replace two O-rings on either side of body and install assembly on shaft. (Impeller blades bent under cam should point in opposite direction to operational rotation.)
5. Position end cover and then replace end cover clamp. **CLAMP SHOULD BE HAND TIGHTENED.** Do not use wrench or hammer.

---

## DETAILED DISASSEMBLY AND ASSEMBLY OF BEARING HOUSING

---

### DISASSEMBLY:

1. Remove seal assembly and collar from shaft.
2. Pry outer bearing seal from rear of bearing housing by inserting a screwdriver blade between O.D. of seal and housing bore. Remove housing retaining ring using retaining ring pliers.
3. Push on impeller drive end of shaft to remove shaft and bearing assembly. Outer race of front bearing and housing bearing will remain in housing.
4. Remove housing bearing spacer from housing.
5. Pry or tap out front bearing seal from housing bore and remove front retaining ring with retaining ring pliers.
6. Push outer race of front bearing from housing.
7. Remove retaining rings from shaft with retaining ring pliers. Use an arbor press to remove bearings from shaft. Roller bearing presses off toward impeller and ball bearing presses off toward drive end of shaft. Remove bearing spacer.

### ASSEMBLY:

1. Push outer race of roller bearing into housing from impeller end. Install front housing retaining ring. Push outer race up against housing retaining ring.
2. Press front bearing seal into housing against front housing retaining ring (spring of lip seal faces outward).
3. Install large diameter bearing spacer into housing against outer race of bearing.
4. To replace bearing shaft:
  - (a) Install front shaft retaining ring.
  - (b) Press ball bearing on shaft against retaining ring (drive end of shaft).
  - (c) Install rear shaft retaining ring against ball bearing.
  - (d) Slide bearing spacer on shaft up to front retaining ring.
  - (e) Press roller bearing on shaft from impeller drive end up to spacer.
5. Liberally coat bearing race areas of bearings with bearing grease. Do not overpack with grease or overheating will occur.
6. From rear of housing, insert shaft/bearing assembly roller bearing first into housing taking care not to damage front bearing seal or bearings.
7. Install rear bearing seal into housing against retaining ring (with lip seal spring outward).
8. Replace collar and seal.

# One Year Limited Warranty

**A. LIMITED WARRANTY:** ITT warrants that at the time of shipment, the products manufactured by ITT and sold hereunder shall be in conformity with applicable written specifications and descriptions referred to or set forth herein, free from defects in material and workmanship, merchantable, and suitable for a particular purpose, provided such is implied by State law under the circumstances of this sale.

## B. WARRANTY ADJUSTMENT:

1. ITT agrees to repair or furnish a replacement for, but not to remove or install, any product or component thereof which, within one (1) year from date of purchase, shall upon test and examination by ITT prove defective within the above warranty. Receipt verifying purchase date is required to obtain adjustment.
2. Buyer shall notify ITT of any defect within this warranty no later than ninety (90) days after the defect is discovered.
3. No product will be accepted for return or replacement without the prior written authorization of ITT. Upon such authorization, and in accordance with instructions from ITT, the product will be returned to ITT, shipping charges prepaid by Buyer. Products returned to ITT will be addressed as follows:

ITT JABSCO  
1485 Dale Way  
Costa Mesa, CA 92626-3998

Or to such alternate locations as may be designed on the product, its container, or this sheet. Repair or replacement made under this warranty will be shipped prepaid to Buyer.

## C. EXCLUSIONS FROM WARRANTY AND LIMITATION OF LIABILITY:

1. The foregoing warranty is limited solely as set forth herein and applies only for the period designated above.
2. ITT SHALL NOT BE LIABLE FOR ANY LOSS, DAMAGE, SPECIAL OR CONSEQUENTIAL DAMAGE OF ANY KIND, WHETHER BASED UPON WARRANTY, CONTRACT, NEGLIGENCE, OR STRICT LIABILITY ARISING IN CONNECTION WITH THE SALE, USE, OR REPAIR OF THE PRODUCT.
3. THE MAXIMUM LIABILITY OF ITT IN CONNECTION WITH THIS WARRANTY SHALL NOT IN ANY CASE EXCEED THE CONTRACT PRICE FOR THE PRODUCT CLAIMED TO BE DEFECTIVE OR UNSUITABLE.
4. This warranty does not extend to any product manufactured by ITT which has been subjected to misuse, neglect, accident, improper installation, or use in violation of instructions furnished by ITT.
5. This warranty does not extend to or apply to any unit which has been repaired or altered at any place other than ITT's factory, or by persons not expressly approved by ITT, nor to any unit the serial number, model number, or identification of which has been removed, defaced or changed.
6. Components manufactured by any supplier other than ITT shall bear only that warranty made by the manufacturer of that product.
7. This warranty applies to products defined as "consumer products" by the Consumer Product Warranties Act as from time to time amended.

**D. CONSUMER RIGHTS:** This warranty gives you specific legal rights, and you may have other rights which vary from state to state. Some states do not allow exclusion or limitation of damage.

**STANDARD WARRANTY:** If the products manufactured and sold hereunder are not Consumer Products, the warranty extended to Buyer shall be as set forth in subparagraphs (A), (B), and (C), **EXCEPT THAT ALL EXPRESS OR IMPLIED WARRANTIES OR MERCHANTABILITY OR SUITABILITY FOR ANY PARTICULAR PURPOSE ARE EXCLUDED.**

## ITT Jabsco

A Unit of ITT Fluid Technology Corporation

U.S.A.  
ITT Jabsco  
1485 Dale Way, P.O. Box 2158  
Costa Mesa, CA 92628-2158  
Tel: (714) 545-8251  
Fax: (714) 957-0609

UNITED KINGDOM  
ITT Jabsco  
Bingley Road, Hoddesdon  
Hertfordshire EN11 0BU  
Tel: +44 (0) 1992 450145  
Fax: +44 (0) 1992 467132



CANADA  
ITT Fluid Products  
55 Royal Road  
Guelph, Ontario N1H 1T1  
Tel: (519) 821-1900  
Fax: (519) 821-2569

THE PRODUCTS DESCRIBED HEREIN ARE SUBJECT TO THE JABSCO ONE YEAR LIMITED WARRANTY, WHICH IS AVAILABLE FOR YOUR INSPECTION UPON REQUEST.

JAPAN  
NHK Jabsco Company Ltd.  
3-21-10, Shin-Yokohama  
Kohoku-Ku, Yokohama, 222  
Tel: 045-4758906  
Fax: 045-475-8908

GERMANY  
MINTEC GmbH  
Oststrasse 28  
22844 Norderstedt  
Tel: +49-40-53 53 73 -0  
Fax: +49-40-53 53 73 -11