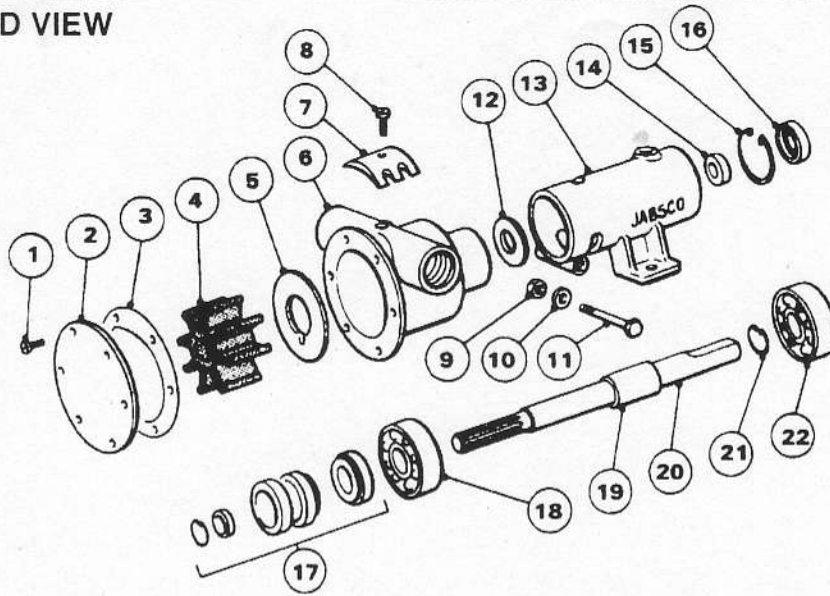


EXPLODED VIEW



PARTS LIST			Model 10550	Model 9710
Key	Description	Qty	Part No	Part No
1	Endcover Screw*	6	SP1002-02	SP1003-09
2	Endcover	1	3992	3993
3	Gasket*	1	3298	890
4	Impeller*	1	1210-0001B	17937-0001B
5	Wearplate	1	7883	4156
6	Body	1	10554-200	10329-200
7	Cam	1	490	934
8	Cam Screw	1	SP1003-01	SP1004-09
9	Nut	1	SP1105-03	SP1105-03
10	Washer	1	SP1602-06	SP1602-06
11	Bolt	1	SP1095-09	SP1095-09
12	Slinger	1	3286	3180
13	Bearing Housing	1	10557	10330
14	Inner Bearing Seal	1	SP2701-21	SP2701-21
15	Retaining Ring	1	SP1700-248	SP1701-185
16	Outer Bearing Seal	1	SP2701-15	SP2700-47
17	Seal Assembly*	1	22617-0010	22617-0010
18	Ball Bearing	1	SP2601-39	SP2600-38
19	Bearing Spacer	1	9998	-
20	Shaft	1	10417	9717
21	Retaining Ring	1	SP1700-249	-
22	Ball Bearing	1	SP2601-39	SP2600-38
23	Spline Seal	1	4345	4345

MODEL 10550-200

Service Kit No SK239

Contains Parts marked*

Options

High Pressure

Neoprene Impeller Part No 3085-0001B

Nitrile Impeller Part No 1210-0003B

1/2 Cam Part No 10336

1/2 Cam Screw Part No SP1003-09

MODEL 9710-200

Service Kit No SK 229

Contains Parts marked*

Options:-

High Pressure

Neoprene Impeller Part No 5915-0001B

Nitrile Impeller Part No 17937-0003B

1/2 Cam Part No 2431

1/2 Cam Screw Part No SP1004-10

2/3 Cam Part No 3255

2/3 Cam Screw Part No SP1004-10

SERVICE INSTRUCTIONS

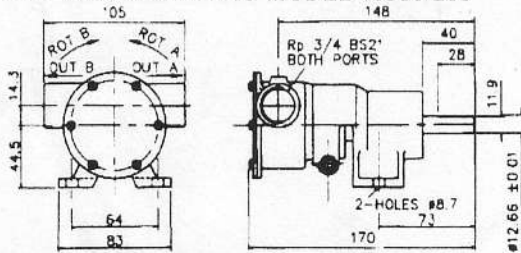
Dis-Assembly Inspect all parts for wear or damage and replace if necessary

- Remove endcover screws, endcover and gasket.
- Remove impeller.
- Loosen cam screw, remove cam, (clean off any old jointing compound).
- Remove wearplate.
- Remove seal retaining ring from shaft.
- Remove pump body from bearing housing by removing holding bolt.
- Remove spacer and seal assembly.
- Slide slinger off shaft.
- Insert screwdriver between OD of outer bearing seal and bearing housing bore and pry out seal.
- Remove bearing to housing retaining ring.
- Press shaft on impeller drive end to remove shaft and bearing assembly from pump. Heating outside of body will ease dis-assembly. Remove inner bearing seal. Remove shaft retaining ring model 10550.
- Support bearing inner race and press shaft through bearing. Repeat procedure for other bearing.

Assembly

- Lubricate inner bearing seal with grease and press into body bearing seal bore with lip facing away from bearing bore.
- Support inner race of bearing and press shaft through bearing until located against shoulder on shaft. Repeat operation for other bearing.
- Locate slinger in drain area.
- Press shaft and bearing assembly into bearing housing, guide slinger onto shaft until located in housing.
- Fit bearing to body retaining ring.
- Lubricate outer bearing seal with grease and press into bearing bore until it is flush with the body, (spring facing outwards).
- Fit pump body, secure to housing with bolt, washer and nut.
- Fit seal seat and cup rubber, with seal seat facing towards impeller bore.
- Fit seal with carbon face towards face of seal seat and replace spacer.
- Fit shaft retaining ring onto shaft, (10550).
- Install wearplate in body bore aligning slot in wearplate with dowel pin in body.
- Coat cam screw threads, and top of cam with a non setting jointing compound. Install in body.
- Lubricate impeller bore with a light coat of good quality water pump grease and start impeller into bore with a rotary motion until splines engage, then push into bore.
- Replace gasket, endcover and secure with endcover screws.

INSTALLATION DRAWING MODEL 10550-200



INSTALLATION DRAWING MODEL 9710-200

