

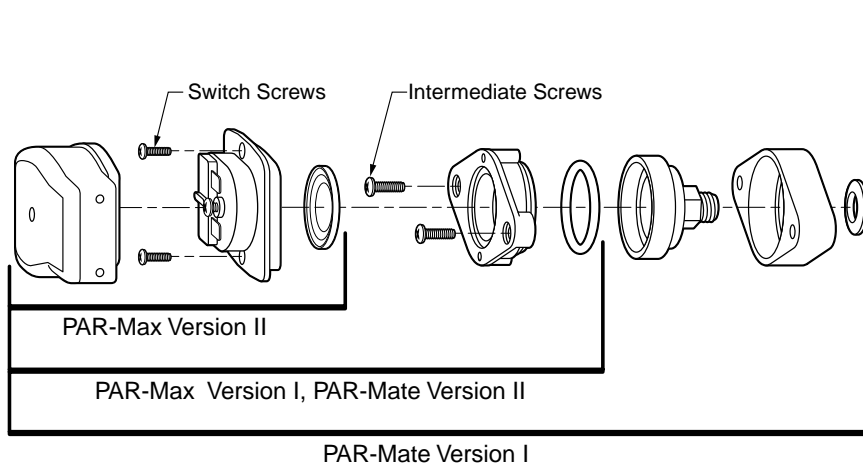


Universal Switch Replacement Kit

WARNING!



**Turn off power before servicing pump.
Open faucets to relieve system pressure.**



	PAR-Mate Version I	44010 Series
	PAR-Mate Version II	44010 Series
	PAR-Max Version I	30XXX Series
	PAR-Max Version II	31XXX Series

SWITCH REPLACEMENT

Jabsco Universal Switch Replacement Kit fits all previous models of PAR-Max and PAR-Mate pumps. Improved switch design is completely sealed for protection in Marine environments and long life. Switch cut-off pressure is factory set.

Turn off power before servicing pump. Open faucets to relieve system pressure. If pump is located below the supply tank, insure that the supply tank valve is closed to prevent water leakage during service.

Disconnect wires from terminals and remove old pressure switch from pump. Determine pump model

and vintage from the table and diagram above. Re-assemble parts for your model in sequence shown. Tighten intermediate screws (if used) to 15 inch-pounds of torque. Tighten switch screws to 7 inch-pounds of torque. Replace terminals with new terminals supplied in this kit.

Close all faucets. Turn power on to pump. Open faucet to bleed trapped air from system. When bubbles stop, close faucet and confirm that pump turns off automatically. Check for leaks and proper operation.

Jabsco



ITT Industries
Engineered for life

THE PRODUCTS DESCRIBED HEREIN ARE SUBJECT TO THE JABSCO ONE-YEAR LIMITED WARRANTY, WHICH IS AVAILABLE FOR YOUR INSPECTION UPON REQUEST.

U.S.A.
Jabsco
Cape Ann Industrial Park
Gloucester, MA 01930
Tel: 978.281.0440
Fax: 978.283.2619

UNITED KINGDOM
Jabsco
Bingley Road, Hoddesdon
Hertfordshire EN11 OBU
Tel: +44 (0) 1992 450145
Fax: +44 (0) 1992 467132

CANADA
Fluid Products Canada
55 Royal Road
Guelph, Ontario N1H 1T1
Tel: (519) 821-1900
Fax: (519) 821-2569

JAPAN
NHK Jabsco Company Ltd.
3-21-10, Shin-Yokohama
Kohoku-Ku, Yokohama, 222
Tel: 045-475-8906
Fax: 045-475-8908

GERMANY
Jabsco GmbH
Oststrasse 28
22844 Norderstedt
Tel: +49-40-53 53 73-0
Fax: +49-40-53 53 73-11