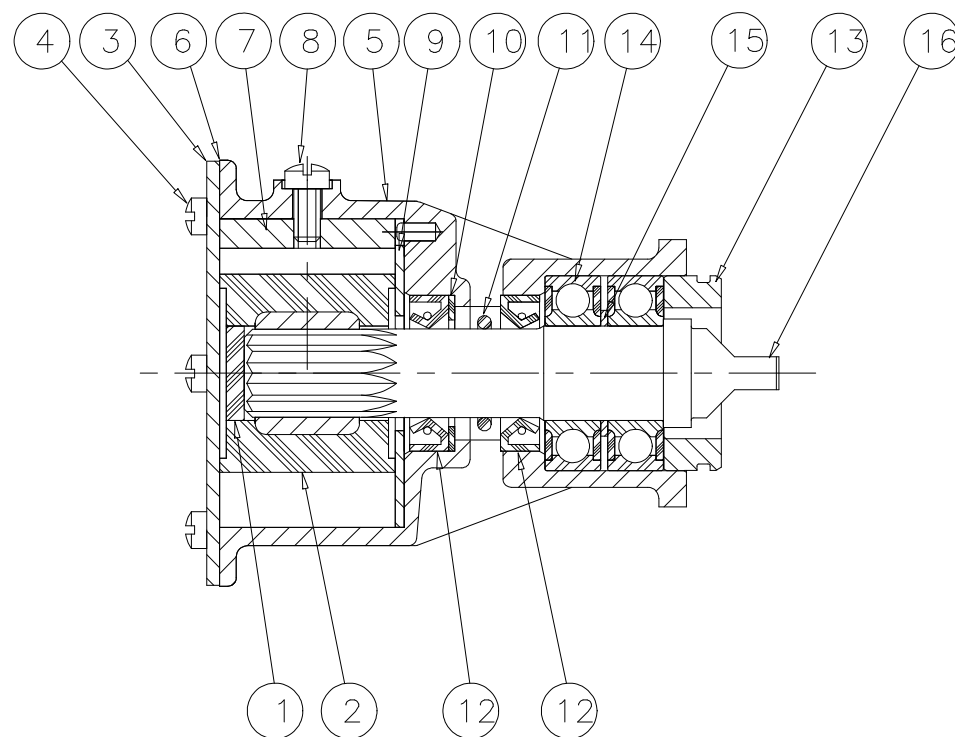
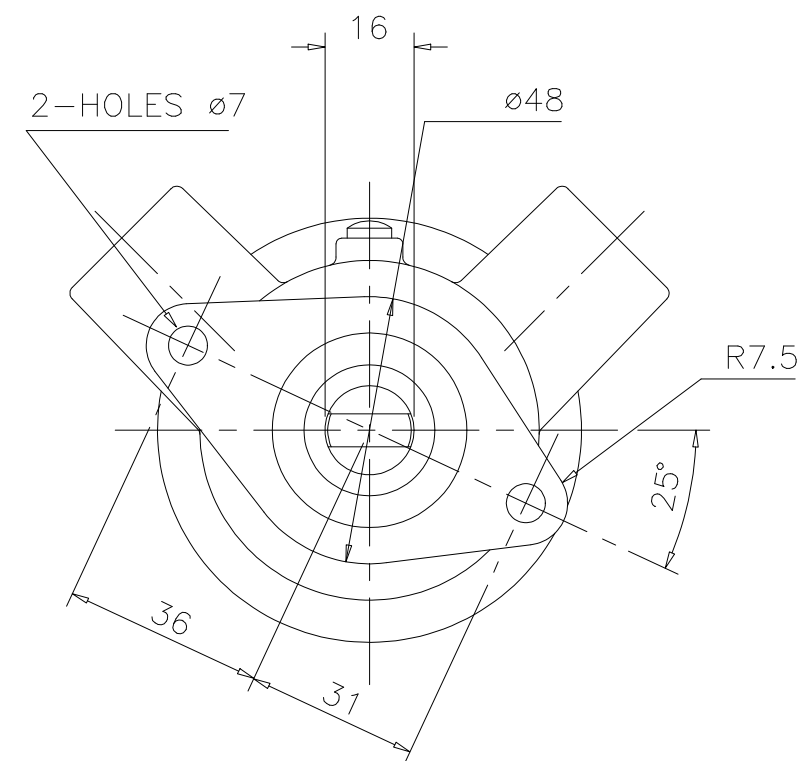
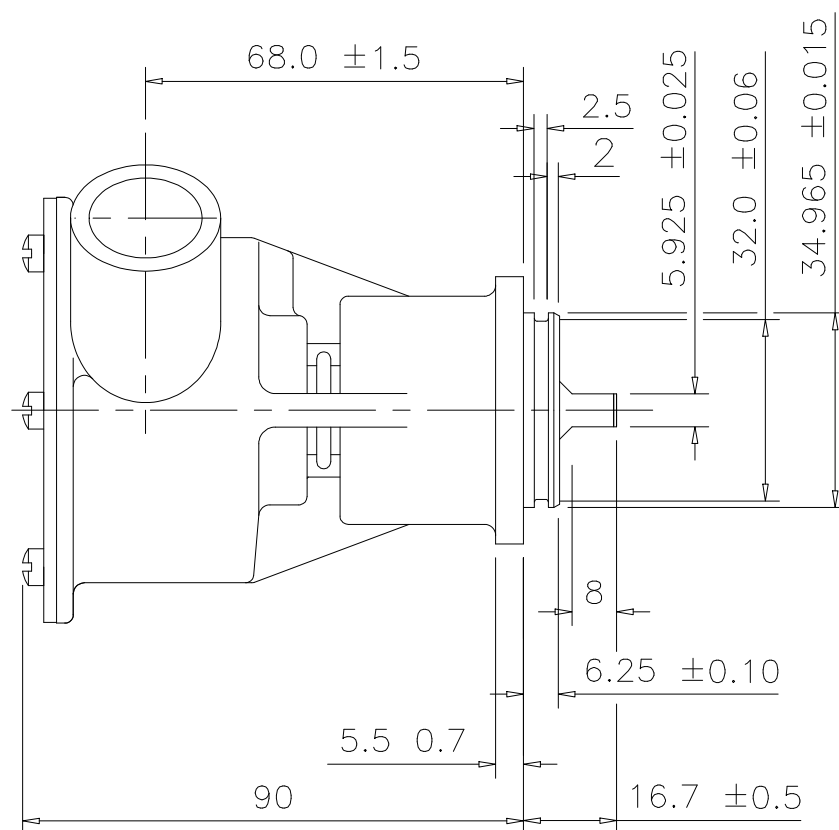
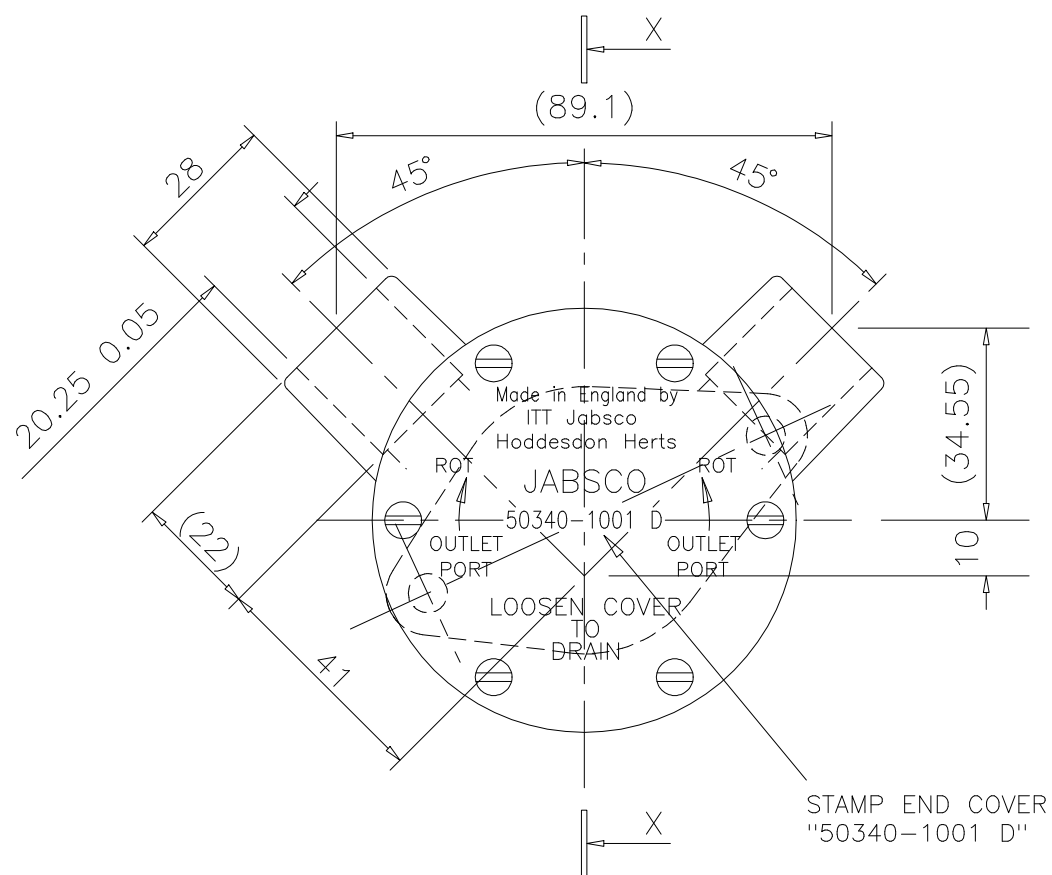


This document contains technical data that is subject to export controls under the Export Administration Act and Export Administration Regulations (15 CFR 770, et seq.) This data may not be provided to non U.S. Persons or transferred to any location outside of the United States without the advance written permission of Fluid & Motion Control and the approval of the Department of Commerce



SECTION X - X

KEY	DESCRIPTION	QTY.
1	SPLINE PLUG	1
2	IMPELLER	1
3	END COVER	1
4	SCREW	6
5	BODY	1
6	GASKET	1
7	CAM	1
8	SCREW	1
9	WEAR PLATE	1
10	SEAL SPACER	1
11	O-RING	1
12	LIP SEAL	2
13	ADAPTOR RING	1
14	BALL BEARING	2
15	SPACER	1
16	SHAFT	1



ISSUE	CHANGE	DATE
F	002960	10/06/08
E	GV	9/11/06
D	ECN 11711	9/9/02
C	ECN 11524	24/6/02
B	ECN 10951	7/12/00
A	ECN 10197	16/11/00

NOTICE  
THIS DRAWING MAY REPRESENT A PROPRIETARY ARTICLE OR ONE ON WHICH PATENTS ARE APPLIED FOR OR ISSUED. REPRODUCTION THEREOF OR MANUFACTURE OF PARTS THEREFROM IS NOT PERMISSIBLE WITHOUT THE WRITTEN PERMISSION OF ITT JABSCO

REMOVE SAND, FINIS, FLASH & SCALE FROM CASTINGS, FORGINGS & MOULDINGS. PART TO BE FREE OF BURRS. TOLERANCES UNLESS OTHERWISE STATED:

LINEAR ± -  
ANGULAR ± -

DO NOT SCALE - REPORT ERRORS

SCALE:	1:1	DATE:	14/6/00
DRAWN:	B.N.S.	CHECKED:	
APPROVED:			

ITT Jabsco		HODDES DON HERTS ENGLAND	© 2000
MATERIAL: -		TITLE: INSTALLATION/ASSEMBLY	
DRAWING NO.: 50340-1001			A2