



Model 37220-1010

**TOPSIDER GALLEY PUMP
INSTALLATION INSTRUCTIONS**

Pump is completely assembled and needs only to be mounted as follows:

1. Drill 7/8" hole in desired location, well above water supply tank to avoid syphon action.
2. Remove nut and lock washer from pump tail piece, and extend tail piece through drilled hole. Reinstall washer and nut, do not tighten more than required to hold faucet firmly.
3. Connect plumbing directly to the 1/2" threaded (QEST†) type tail piece or use 1/2" barbed hose adaptor (provided).

NOTICE: When pumping, pull and push in-line with pump cylinder. Side loads to the body should be avoided for efficient long-life operation.

SERVICE INDUCTIONS

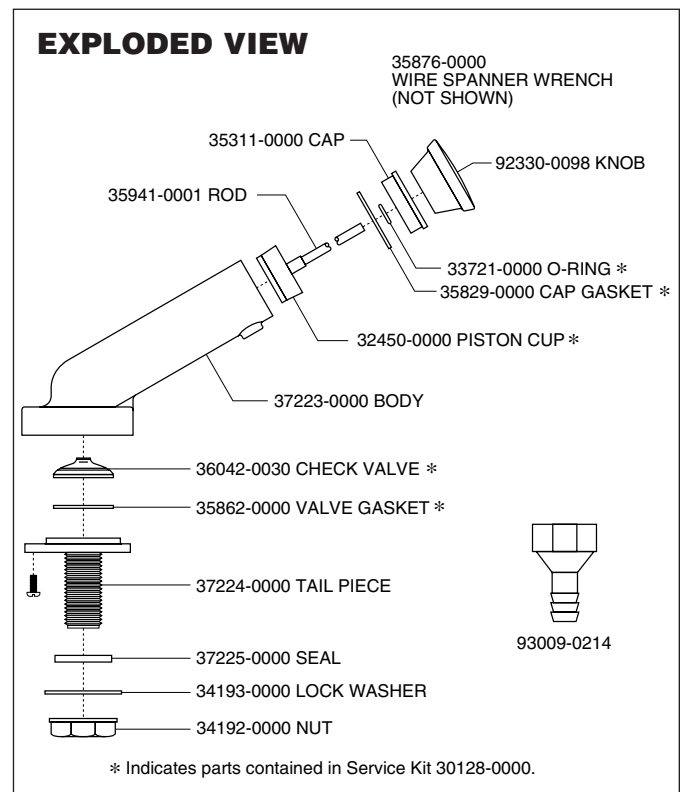
Pump may be serviced, cleaned and drained as follows:

1. Pump may be completely disassembled for cleaning, service and draining.
2. To remove piston assembly, unthread top cap using wire spanner wrench and pull assembly from body.
3. To replace O-ring, remove knob, top cap and pick damaged O-ring from groove in brass bushing molded into cap. Install new O-ring and replace cap assembly being careful not to cut O-ring with shaft threads.

† QEST is a registered trademark of U.S. Brass.



Model 37220-1010



Jabsco



ITT Industries
Engineered for life

THE PRODUCT DESCRIBED HEREIN IS SUBJECT TO THE JABSCO ONE YEAR LIMITED WARRANTY, WHICH IS AVAILABLE FOR YOUR INSPECTION UPON REQUEST.

U.S.A.
Jabsco
20 Icon
Foothill Ranch, CA 92610-3000
Tel: 949.609.5106
Fax: 949.859.1254

UNITED KINGDOM
Jabsco
Bingley Road, Hoddesdon
Hertfordshire EN11 OBU
Tel: +44 (0) 1992 450145
Fax: +44 (0) 1992 467132

CANADA
Fluid Products Canada
55 Royal Road
Guelph, Ontario N1H 1T1
Tel: (519) 821.1900
Fax: (519) 821.2569

JAPAN
NHK Jabsco Company Ltd.
3-21-10, Shin-Yokohama
Kohoku-Ku, Yokohama, 222
Tel: 045.475.8906
Fax: 045.475.8908

GERMANY
Jabsco GmbH
Oststrasse 28
22840 Norderstedt
Tel: +49-40-53 43 73 -0
Fax: +49-40-53 53 73 -11