

9302 Series Centrifugal Pumps

Hydraulic Motor Driven with 1¼" X 1" Ports



FEATURES & BENEFITS:

- Available in two material options - cast iron (C series) for standard applications and 316 stainless steel (S series) for aggressive chemicals and acids.
- Cast Iron models are equipped with stainless steel wear rings for extended pump life.
- Stainless steel models are equipped with a silicon carbide seal for use in abrasives and harsh chemicals.
- New double lipped PTFE oil seal has spiral grooves for improved motor shaft sealing.
- Integral motor and pump shaft feature 316 stainless steel on the pump end for corrosion resistance and 8620 hardened steel in the motor for durability and long life.
- Three motor sizes available to fit nearly all hydraulic systems.
- Cast iron models feature rugged nylon impeller for heavy loads. Stainless steel models feature polypropylene impeller for chemical resistance.

These high performance pumps are designed for agricultural and industrial spraying and transfer of a variety of fluids: water, insecticides, herbicides, wettable powders, emulsives, liquid fertilizers, etc.

The smaller ports make them ideal for smaller sprayers and turf machines.

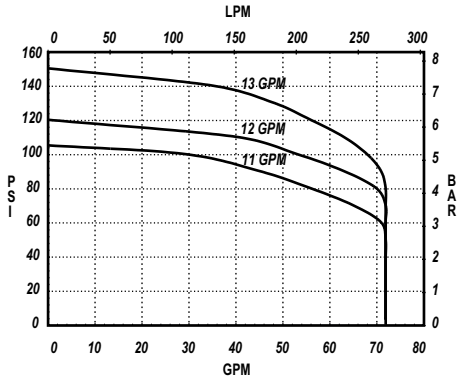
The hydraulic-driven motor allows for remote mounting and easy hook up to system hydraulics.

9302 Series Centrifugal Pumps

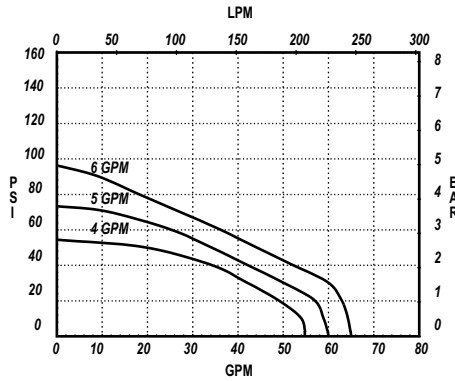
SPECIFICATIONS

Dimension and Performance Information

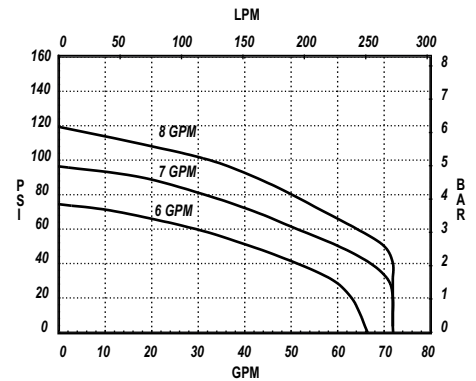
9302C-HM1C & 9302S-HM1C



9302C-HM2C & 9302S-HM2C



9302C-HM4C & 9302S-HM4C



9302C-HM1C and 9302S-HM1C

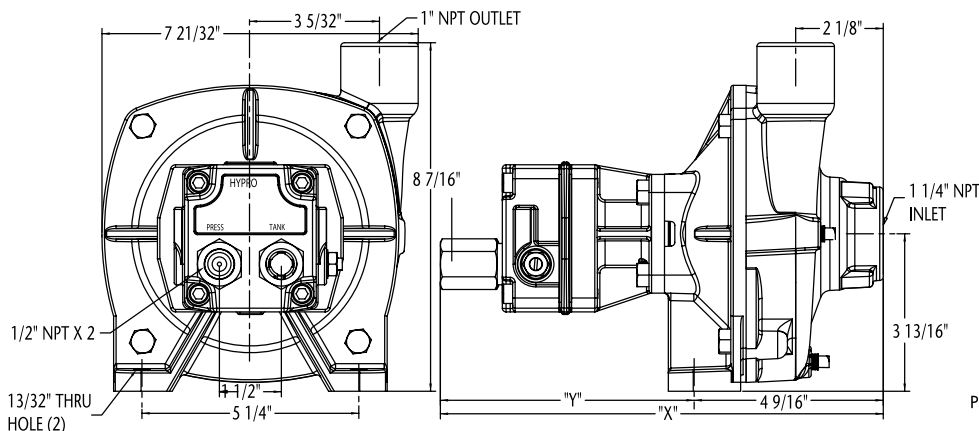
Hyd. Flow	GPM at 2 PSI	GPM at 10 PSI	GPM at 20 PSI	GPM at 30 PSI	GPM at 40 PSI	GPM at 50 PSI	GPM at 60 PSI	GPM at 70 PSI	GPM at 80 PSI	GPM at 90 PSI	GPM at 100 PSI	GPM at 110 PSI	GPM at 120 PSI	GPM at 130 PSI	GPM at 140 PSI
11	72	72	72	72	72	72	71	65	56	45	29				
12	72	72	72	72	72	72	72	72	70	63	53	40			
13	72	72	72	72	72	72	72	72	72	71	68	63	56	48	35
Bar	0.14	0.69	1.38	2.07	2.76	3.45	4.14	4.83	5.52	6.21	6.89	7.58	8.27	8.96	9.65

9302C-HM2C and 9302S-HM2C

Hyd. Flow	GPM at 2 PSI	GPM at 10 PSI	GPM at 20 PSI	GPM at 30 PSI	GPM at 40 PSI	GPM at 50 PSI	GPM at 60 PSI	GPM at 70 PSI	GPM at 80 PSI	GPM at 90 PSI
4	55	54	49	42	34	19				
5	60	59	57	50	42	34	25	11		
6	65	65	63	60	52	44	36	27	18	9
Bar	0.14	0.69	1.38	2.07	2.76	3.45	4.14	4.83	5.52	6.21

9302C-HM4C and 9302S-HM4C

Hyd. Flow	GPM at 2 PSI	GPM at 10 PSI	GPM at 20 PSI	GPM at 30 PSI	GPM at 40 PSI	GPM at 50 PSI	GPM at 60 PSI	GPM at 70 PSI	GPM at 80 PSI	GPM at 90 PSI	GPM at 100 PSI	GPM at 110 PSI
6	66	65	63	59	51	41	29	12				
7	72	72	72	71	67	60	51	42	31	17		
8	72	72	72	72	72	70	64	57	50	42	32	16
Bar	0.14	0.69	1.38	2.07	2.76	3.45	4.14	4.83	5.52	6.21	6.89	7.58



HYPRO
A WICOR COMPANY

SPRAY GROUP

375 Fifth Avenue NW • New Brighton, MN 55112-3288
Phone: (651) 766-6300 • 800-424-9776 • Fax: 800-323-6496
www.hypropumps.com