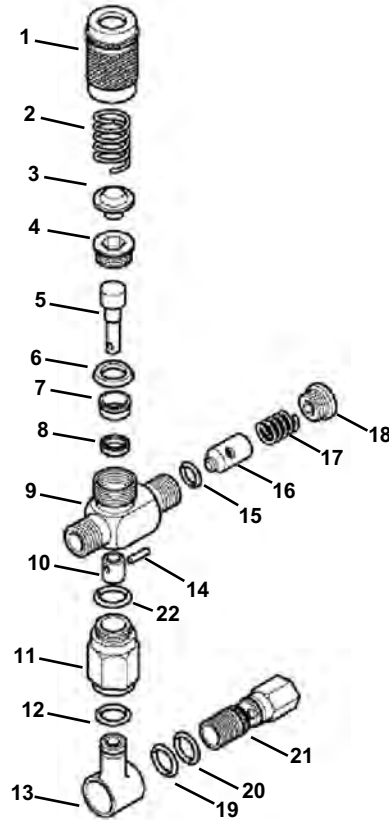


# Unloader/Bypass Valve Model 3390-0086 (Models 1802C/1803C)



**Figure 20**  
**Injector/Unloader Seat and Seal Kit Items**

Ref. No.	Part No.	Description	Qty.
1	N/A	Pressure Adjustment Nut	
2	1900-0116	Main Spring	1
3	1900-0101	Spring Button	1
4	2404-0151	Plunger Retainer	1
5	N/A	Plunger	
6 <sup>1</sup>	Sold in kit only	Cup	
7	N/A	Sleeve	
8 <sup>1</sup>	Sold in kit only	Cup	
9	N/A	Valve Body	
10	N/A	Bypass Poppet	
11	N/A	Bypass Seal/Outlet	
12	1720-0004	O-ring	1
13	2404-0164	Bypass Adapter	1
14	1600-0041	Poppet Pin	1
15 <sup>1</sup>	Sold in kit only	O-ring	1
16	N/A	Check Valve Poppet	
17	N/A	Check Valve Spring	
18	1830-0115	Poppet Retainer	1
19	1720-0004	O-ring	1
20	1720-0064	O-ring	1
21	2404-0164	Bypass Adapter	1
22 <sup>1</sup>	Sold in kit only	O-ring	1

<sup>1</sup> Denotes Repair Kit item. Repair Kit No. 3430-0223