

**Parts Manual**  
**G10-991-2402B**

# Hydra-Cell<sup>®</sup>

## INDUSTRIAL PUMPS

**Model: G-10**  
*with metallic pump head*

**IMPORTANT**

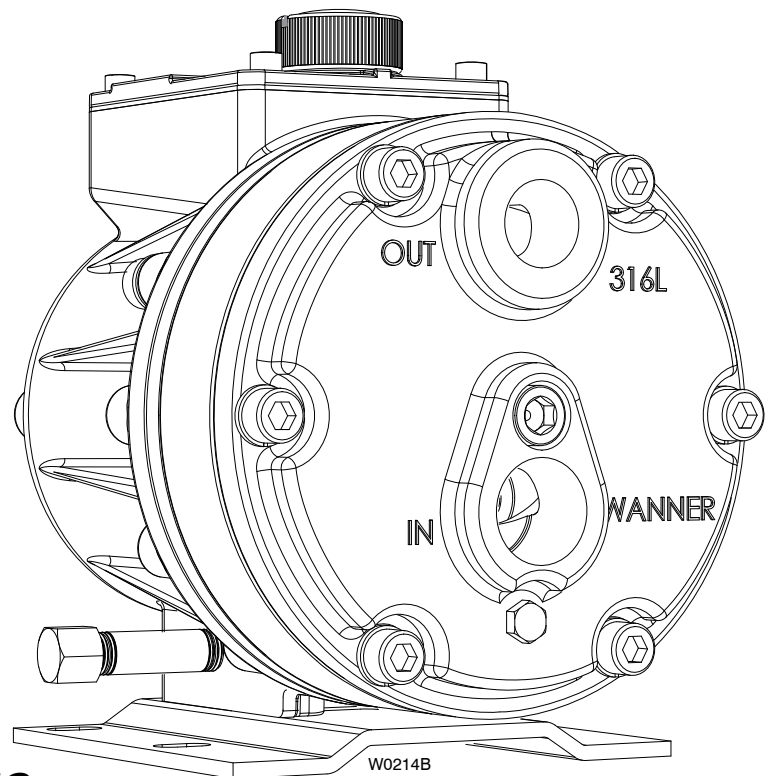
Record your pump model number and serial number here for easy reference:

Model No. \_\_\_\_\_

Serial No. \_\_\_\_\_

Date of Purchase \_\_\_\_\_

When ordering parts or making inquiries about this pump, please mention the model and serial numbers.



**WANNER ENGINEERING, INC.**

1204 Chestnut Avenue, Minneapolis, MN 55403

TEL: (612) 332-5681 FAX: (612) 332-6937

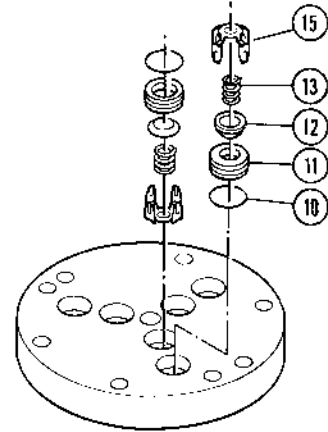
TOLL-FREE FAX [US only]: (800) 332-6812

[www.hydra-cell.com](http://www.hydra-cell.com)

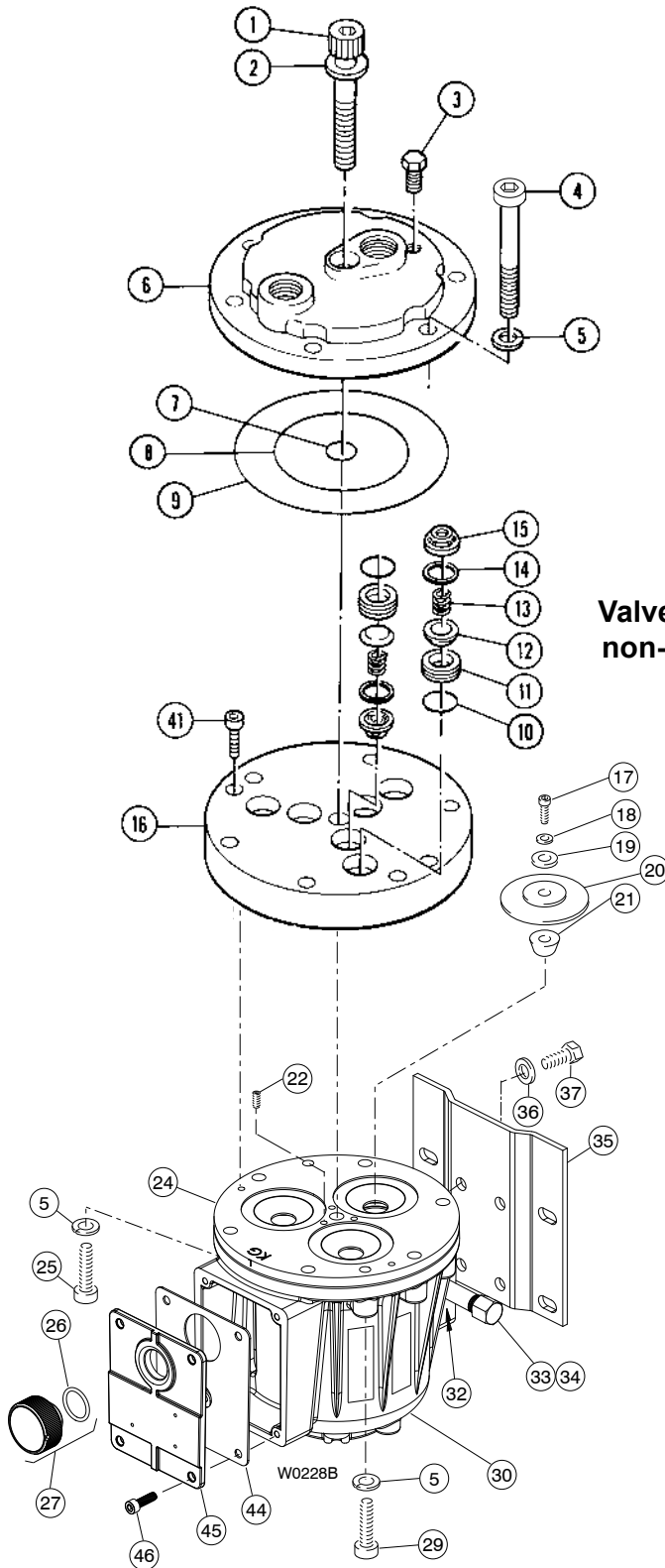
email: [sales@wannereng.com](mailto:sales@wannereng.com)

# G-10 Fluid End (with metallic pump head)

## Valve Assemblies with Metal Retainers



## Valve Assemblies with non-Metallic Retainers



# G-10 Fluid End (with metallic pump head)

Ref. No.	Part Number	Description	Quantity/ Pump	Ref. No.	Part Number	Description	Quantity/ Pump
1	G10-081-2010	Screw, Cap, soc-hd, 70 mm	1	12	D10-021-1011	Valve, Nitronic	6
2	G10-084-1010	Washer, Flat	1		D10-021-1015	Valve, 17-4 SST, machined, HT	6
3	G10-038-2017	Plug, Hastelloy C	1		D10-021-1016	Valve, Tungsten carbide	6
	G10-038-2211	Plug, 316 SST	1		D10-021-1017	Valve, Hastelloy C	6
					D10-021-3300	Valve, Ceramic	6
4	G10-024-2010	Screw, Soc-hd, 90 mm <sup>1</sup>	6	13	D10-022-3116	Valve Spring, 17-7 SST, HT	6
	G10-024-2011	Screw, Soc-hd, 80 mm <sup>2</sup>	6		D10-022-3117	Valve Spring, Elgiloy	6
					D10-022-3123	Valve Spring, Hastelloy C	6
5	D11-048-2011	Washer, Flat <sup>1</sup>	12	14	D10-092-2110	Tetra Seal, Buna	6
	G25-048-2010	Washer, Split-lock <sup>2</sup>	8		D10-092-2111	Tetra Seal, Viton	6
6	G10-004-1002	Manifold, 316 SST, BSPT	1		D10-092-2112	Tetra Seal, Neoprene	6
	G10-004-1008	Manifold, Brass, BSPT	1		D10-092-2113	Tetra Seal, EPDM	6
	G10-004-1017	Manifold, Nickel alloy, Hastelloy CW12MW, BSPT	1		D10-092-2118	Tetra Seal, PTFE	6
	G10-004-1034	Manifold, Cast iron, BSPT	1	15	D10-023-1010	Retainer, Valve spring, 17-7 SST, HT	6
7	D10-083-2110	O-ring, Center bolt, Buna	1		D10-023-1017	Retainer, Valve spring, Hastelloy C	6
	D10-083-2111	O-ring, Center bolt, Viton	1		D10-023-2310	Retainer, Valve spring, Celcon	6
	D10-083-2112	O-ring, Center bolt, Neoprene	1		D10-023-2326	Retainer, Valve spring, Nylon	6
	D10-083-2113	O-ring, Center bolt, EPDM	1		D10-023-2327	Retainer, Valve spring, polypropylene	6
	D10-083-2118	O-ring, Center bolt, PTFE	1		D10-023-2328	Retainer, Valve spring, Kynar	6
8	D10-073-2118	O-ring, Inner manifold, PTFE	1	16	D10-003-1011	Valve plate, Brass	1
	D11-073-2120	O-ring, Inner manifold, Buna	1		D10-003-1012	Valve plate, 316 SST	1
	D11-073-2121	O-ring, Inner manifold, Viton	1		D10-003-1019	Valve plate, Cast iron	1
	D11-073-2122	O-ring, Inner manifold, Neoprene	1		D10-003-1027	Valve plate, Nickel alloy, Hastelloy Cw12MW	1
	D11-073-2123	O-ring, Inner manifold, EPDM	1	17	D10-030-2010	Screw, Flat-hd, SST, 3/8 in.	3
9	D10-074-2118	O-ring, Outer manifold, PTFE	1		D10-030-2011	Screw, Flat-hd, Hastelloy C, 3/8 in.	3
	D11-074-2120	O-ring, Outer manifold, Buna	1	18	D10-047-2110	O-ring, Follower, Buna-N	3
	D11-074-2121	O-ring, Outer manifold, Viton	1		D10-047-2111	O-ring, Follower, Viton	3
	D11-074-2122	O-ring, Outer manifold, Neoprene	1		D10-047-2112	O-ring, Follower, Neoprene	3
	D11-074-2123	O-ring, Outer manifold, EPDM	1		D10-047-2113	O-ring, Follower, EPDM	3
					D10-047-2118	O-ring, Follower, PTFE	3
10	D10-035-2110	O-ring, Valve seat, Buna	6	19	D10-017-1010	Follower, 316 SST	3
	D10-035-2111	O-ring, Valve seat, Viton	6		D10-017-1011	Follower, Hastelloy C	3
	D10-035-2112	O-ring, Valve seat, Neoprene	6	20	D10-018-2312	Diaphragm, Neoprene	3
	D10-035-2113	O-ring, Valve seat, EPDM	6		D10-018-2313	Diaphragm, EPDM	3
	D10-035-2118	O-ring, Valve seat, PTFE	6		D10-018-2315	Diaphragm, Viton XT	3
11	D10-020-1010	Valve seat, 17-4 SST, HT	6		D10-018-2318	Diaphragm, PTFE	3
	D10-020-1011	Valve seat, 316 SST	6		D10-018-2320	Diaphragm, Buna-N-XS	3
	D10-020-1016	Valve seat, Tungsten carbide	6	21	D10-016-1010	Plunger	3
	D10-020-1017	Valve seat, Hastelloy C	6	22	G10-082-2010	Set Screw, 10 mm	3
	D10-020-3300	Valve seat, Ceramic	6				

<sup>1</sup> Used on G10 models prior to S/N 216283.

<sup>2</sup> Used on G10 models S/N 216283 and above.

# G-10 Fluid End (with metallic pump head)

Ref. No.	Part Number	Description	Quantity/ Pump
24	K10-002-1020	Cylinder Housing.....	1
	K10-002-1220	Cylinder Housing Assembly, Metric <sup>3</sup>	
	K10-002-1242	Loaded Cylinder Housing, Metric, Neoprene <sup>6</sup>	
	K10-002-1243	Loaded Cylinder Housing, Metric, EPDM <sup>6</sup>	
	K10-002-1244	Loaded Cylinder Housing, Metric, Buna N-XS <sup>6</sup>	
	K10-002-1245	Loaded Cylinder Housing, Metric, Viton XT <sup>6</sup>	
	K10-002-1246	Loaded Cylinder Housing, Metric, PTFE <sup>6</sup>	
25	G10-029-2010	Screw, Cap, hex-hd, 25 mm <sup>1</sup> .....	4
	G10-089-2011	Screw, Cap, hex-hd, 38 mm <sup>2</sup> .....	1
26	D10-080-2110	O-ring, Oil fill, Buna.....	1
27	D03-039-1030	Cap with O-ring, Oil fill.....	1
29	G10-087-2010	Screw, Cap, soc-hd, 30 mm <sup>1</sup> .....	1
	G10-087-2011	Screw, Cap, soc-hd, 45 mm <sup>2</sup> .....	1
30	G10-001-1050	Pump Housing, Metric <sup>4</sup> .....	1
	G10-001-1215	Pump Housing Assembly, Metric <sup>5</sup> .....	—
31	G10-028-2010	Nut, Hex, M10.....	6
32	D10-076-2210	Elbow, Brass, 1/8 in. <sup>1</sup> .....	1
	D10-076-2250	Plug, Soc-hd, 1/4 in. <sup>2</sup> .....	2
33	D10-077-2210	Nipple, Brass, 3/8 in. <sup>1</sup> .....	1
	D10-077-2250	Nipple, Brass, 1/4 in. <sup>2</sup> .....	1
34	D10-078-2210	Cap, Brass, 1/8 in. <sup>1</sup> .....	1
	D10-078-2250	Cap, Brass, 1/4 in. <sup>2</sup> .....	1
35	D10-025-1010	Base.....	1
36	D10-054-2010	Washer, Shakeproof.....	4
37	G10-029-2010	Screw, Cap, hex-hd, 25 mm.....	4
41	G10-088-2010	Screw, Cap, soc-hd, 30 mm.....	2
43	G10-029-2010	Screw, Cap, soc-hd, 25 mm <sup>1</sup> .....	1
	G10-089-2011	Screw, Cap, soc-hd, 38 mm <sup>2</sup> .....	1
44	G10-106-2350	Gasket, Cover <sup>2</sup> .....	1
45	G10-105-1050	Cover/Nameplate <sup>2</sup> .....	1
46	G03-088-2010	Screw, 20 mm <sup>2</sup> .....	4

<sup>1</sup> Used on G10 models prior to S/N 216283.

<sup>2</sup> Used on G10 models S/N 216283 and above.

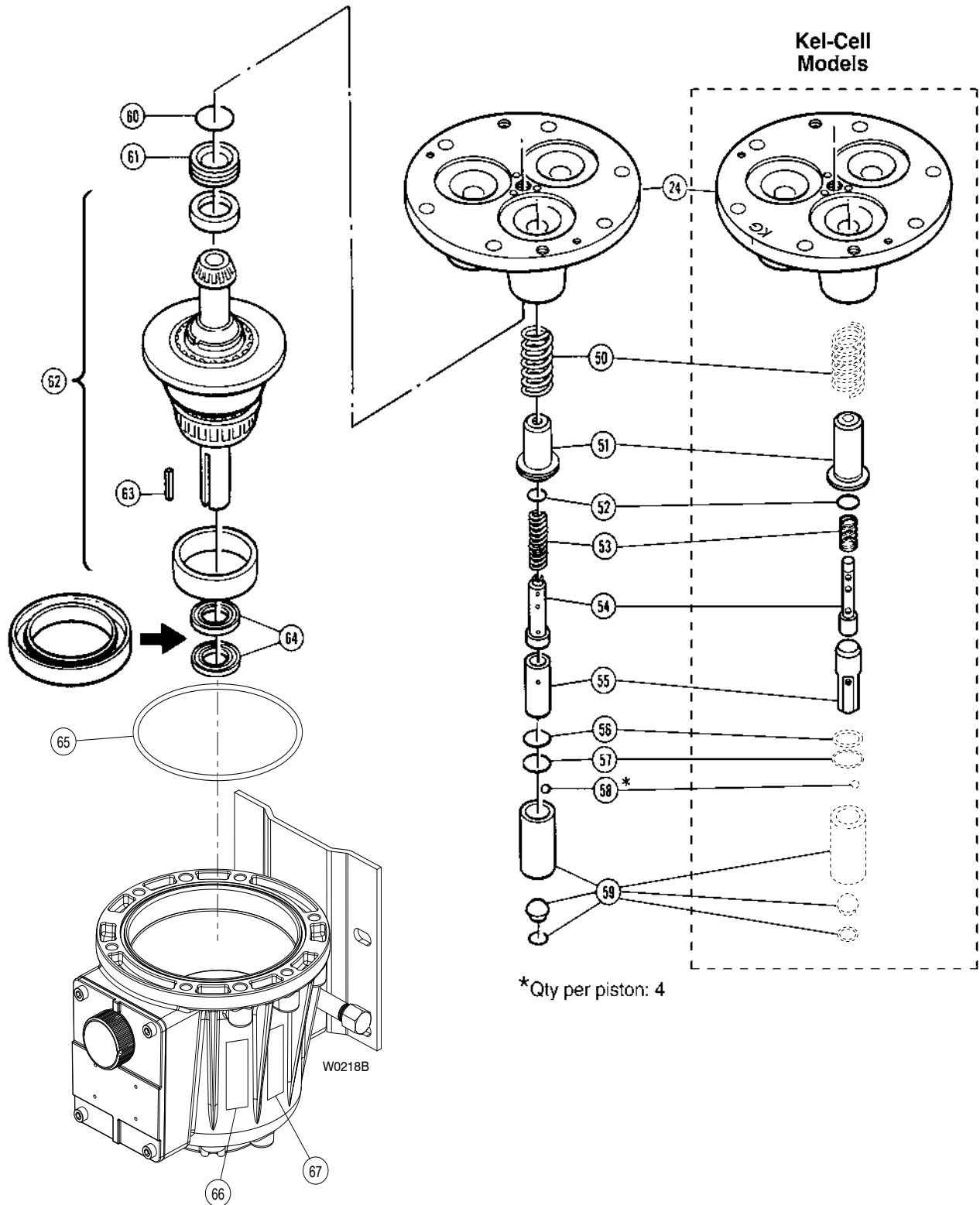
<sup>3</sup> Cylinder Housing Assembly includes casting (24), bearing, adjusting plate (61), O-ring (60), and set screws (22).

<sup>4</sup> Pump housing (metric) includes housing (30), cover (45), gasket (44), and screws (46). Requires new screws (4), washers (5), screws (25), and screw (29).

<sup>5</sup> Pump Housing Assembly includes housing (30), oil drain/plugs (32, 33, 34), cover (45), gasket (44), and screws (46). Requires new screws (4), washers (5), screws (25), and screw (29).

<sup>6</sup> Loaded Cylinder Housing includes Fluid End parts (17 - 22) and Hydraulic End parts (50 - 61).

# G-10 Hydraulic End (with metallic pump head)



# G-10 Hydraulic End (with metallic pump head)

Ref. No.	Part Number	Description	Quantity/ Pump
50	D10-019-3110	Spring, Piston return .....	3
51	D10-042-1010	Retainer, Spring .....	3
	K10-042-1010	Retainer, Spring, Kel-Cell <sup>5</sup> .....	3
52	D10-046-2110	O-ring, Valve cylinder, Buna .....	3
	C23-009-2110	O-ring, Valve cylinder, Buna, Kel-Cell <sup>5</sup> .....	3
53	D10-045-3110	Spring, Sleeve valve .....	3
	D10-045-3111	Spring, Sleeve valve, PTFE diaphragm .....	3
	K10-045-3110	Spring, Sleeve valve, Kel-Cell <sup>5</sup> .....	3
54	D10-044-1010	Valve Plunger .....	3
	K10-044-1010	Valve Plunger, Kel-Cell <sup>5</sup> .....	3
55	D10-043-1010	Cylinder, Valve .....	3
	K10-043-1010	Cylinder, Valve, Kel-Cell <sup>5</sup> .....	3
56	D10-034-2110	O-ring, Buna.....	3
57	D10-041-1010	Washer, Ball retainer.....	3
58	D10-015-3010	Ball .....	12
59	D10-014-1209	Piston with foot and retainer .....	3
	D10-014-1210	Piston Assembly, Buna <sup>6</sup> .....	—
	K10-014-1210	Piston Assembly, Buna, Kel-Cell <sup>5,6</sup> ...	—
60	D10-075-2110	O-ring, Bearing adjusting plate, Buna	1
61	D10-012-1010	Bearing Adjusting Plate.....	1
62	D10-007-1210	(X) Cam Assembly, 29.0 lpm @ 1450 rpm <sup>7</sup> .....	—
	D10-007-1211	(I) Cam Assembly, 12.5 lpm @ 1450 rpm <sup>7</sup> .....	—
	D10-007-1212	(S) Cam Assembly, 18.9 lpm @ 1450 rpm <sup>7</sup> .....	—
	D10-007-1214	(E) Cam Assembly, 25.2 lpm @ 1450 rpm <sup>7</sup> .....	—
63	D10-085-2210	Key, Shaft.....	1
64	D10-031-2110	Seal , Buna.....	2
65	D10-037-2110	O-ring, Pump housing, Buna .....	1
66	D10-111-2401	Label, Caution, freezing.....	1
67	D10-111-2402	Label, Caution, check oil.....	1

<sup>5</sup> Parts used in Kel-Cell version pumps (Kel-Cell version pumps are indicated by a “K” in the 5th digit of the pump model number).

<sup>6</sup> Piston Assembly includes cylinder, foot, valve plunger, O-rings, spring retainer, and springs (50-59).

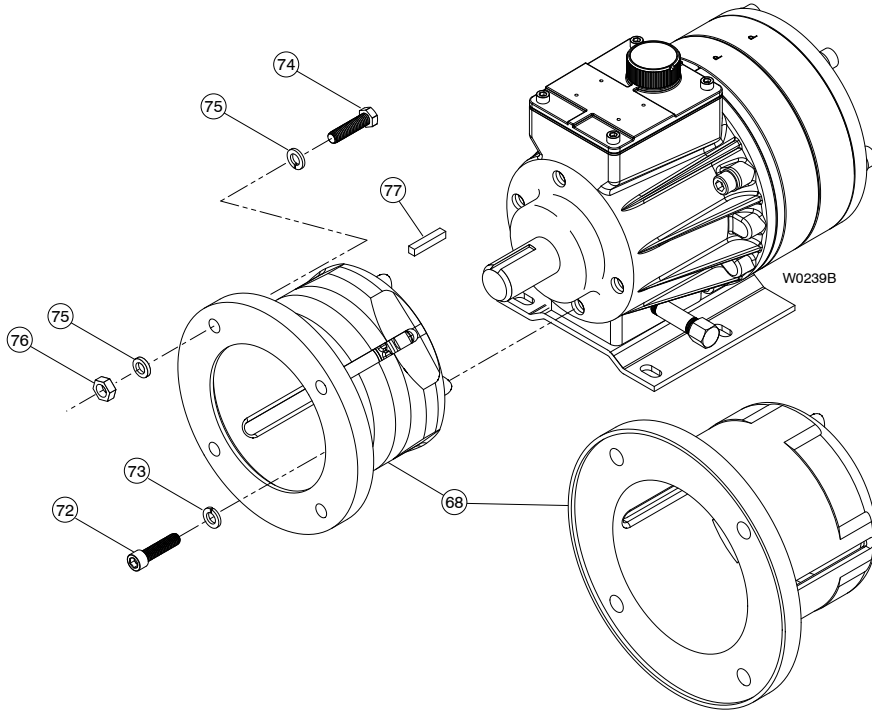
<sup>7</sup> Cam Assembly includes cam, shaft, wobble plate, and bearings. It is only available as an assembly.

# G-10 Adapter Kit (with metallic pump head)

## G-10 Pump/Motor Adapter Kit

For IEC 80-90 B5 Flange Motors (Complete Kit Part No. A04-003-1200)

For IEC 100-112 B5 Flange Motors (Complete Kit Part No. A04-004-1200)



Ref No.	Description	A04-003-1200 <sup>1</sup> A04-001-1200 <sup>2</sup>	A04-004-1200 <sup>1</sup> A04-002-1200 <sup>2</sup>	Qty/Kit
68	Pump/Motor Adapter	A04-031-1001 <sup>1</sup> A04-032-1051 <sup>2</sup>	A04-030-1001 <sup>1</sup> A04-033-1051 <sup>2</sup>	1 1
69*	Adapter Baseplate	A04-025-1010 <sup>1</sup>	—	1
70*	Screw, Cap, Hex-hd	D10-029-2010 <sup>1</sup>	—	4
71*	Lockwasher, Internal tooth	D10-054-2010 <sup>1</sup>	—	4
72	Screw, Cap, Soc-hd	G10-089-2010 M10	G10-089-2010 M10	4 4
73	Lockwasher, Split	G25-048-2011 M10	G25-048-2011 M10	4 4
74	Screw, Cap, Hex-hd,	A04-046-2010 M10	A04-043-2010 M12	4
75	Lockwasher, Split	A04-044-2010 M10	M10-111-2000 1/2 in.	8
76	Nut, Hex	A04-047-2010 M10	A04-045-2010 M12	4
77	Key, Short	A04-085-2210	A04-085-2210	1

<sup>1</sup> Used on G10 models prior to S/N 216283.

<sup>2</sup> Used on G10 models S/N 216283 and above.

\* Not shown.

# G-10 Series Replacement Parts Kits (with metallic pump head)

TO ORDER REPLACEMENT PARTS KIT: A Replacement Parts Kit contains 11 digits corresponding to customer-specified design options.

1	2	3	4	5	6	7	8	9	10	11
---	---	---	---	---	---	---	---	---	----	----

Digit	Order Code	Description
1-3	<b>G10</b>	<b>Pump Configuration</b> For all G-10 Pumps
4		<b>Kit Designator</b>
	<b>K</b>	Complete Fluid End Kit
	<b>D</b>	Diaphragm Kit
	<b>V</b>	Valve Kit (diaphragm not included)
5-6	<b>52</b>	<b>Pump Head Version</b> Metallic Pump Head Version
7		<b>Diaphragm &amp; O-ring Material</b>
	<b>E</b>	EPDM
	<b>G</b>	Viton®-XT
	<b>J</b>	PTFE®
	<b>P</b>	Neoprene
	<b>T</b>	Buna-N-XS
8		<b>Valve Seat Material</b>
	<b>C</b>	Ceramic
	<b>D</b>	Tungsten Carbide
	<b>H</b>	17-4 PH Stainless Steel
	<b>S</b>	316 Stainless Steel
	<b>T</b>	Hastelloy® C
	<b>X</b>	Not included in Diaphragm Kit
9		<b>Valve Material</b>
	<b>C</b>	Ceramic
	<b>D</b>	Tungsten Carbide
	<b>F</b>	17-4 PH Stainless Steel – Machined
	<b>H</b>	17-7 PH Stainless Steel – Stamped
	<b>N</b>	Nitronic 50
	<b>T</b>	Hastelloy® C
	<b>X</b>	Not included in Diaphragm Kit
10		<b>Valve Springs</b>
	<b>E</b>	Elgiloy®
	<b>H</b>	17-7 PH Stainless Steel
	<b>T</b>	Hastelloy® C
	<b>X</b>	Not included in Diaphragm Kit
11		<b>Valve Spring Retainers</b>
	<b>C</b>	Celcon
	<b>H</b>	17-7 PH Stainless Steel
	<b>M</b>	Kynar®
	<b>P</b>	Polypropylene
	<b>T</b>	Hastelloy® C
	<b>Y</b>	Nylon (Zytel)
	<b>X</b>	Not included in Diaphragm Kit

## Kit Contents

Part Number*	Description	Qty	Kit Designator		
			K	D	V
D10-018-___	Diaphragm	3	•	•	
D10-047-___	O-ring, Follower	3	•	•	
D10-074-___	O-ring, Outer manifold	1	•	•	•
D10-073-___	O-ring, Inner manifold	1	•	•	•
D10-083-___	O-ring, Center bolt	1	•	•	•
D10-035-___	O-ring, Valve seat	6	•		•
D10-020-___	Valve seat	6	•		•
D10-021-___	Valve	6	•		•
D10-022-___	Valve spring	6	•		•
D10-092-___	Tetra seal **	6	•		•
D10-023-___	Retainer, Valve spring	6	•		•
A01-113-3400	Threadlocker	1	•	•	

\* Last four digits of part numbers with – \_\_\_ refer to specific material of construction.

\*\* Not included with metallic spring retainers.



## WANNER ENGINEERING, INC.

1204 Chestnut Avenue, Minneapolis, MN 55403  
 TEL: (612) 332-5681 FAX: (612) 332-6937  
 TOLL-FREE FAX [US only]: (800) 332-6812

www.hydra-cell.com  
 email: sales@wannereng.com