

THE CONCEPT

THERMOPURE-2® is a USCG Certified (Certification #159.015/983/0) Type-I MSD for use aboard non-commercial uninspected vessels less than 65-feet in length. Treatment is accomplished by pumping macerated waste through a chamber where low-level heat is introduced to eliminate bacteria. No chemicals or additives are required, treatment is equally efficient in fresh, brackish or salt-water, and thanks to SWEETTANK® the system is completely odor-free.

THERMOPURE-2® is compact and modular, so installation is simplified. The system works with all toilet systems, with multiple toilets flushing simultaneously, and with remote holding tanks. Treatment capacity is 15-gallons per 8-hour day (45 gallons in 24 hours).

TO CONVERT EXISTING HOLDING TANKS

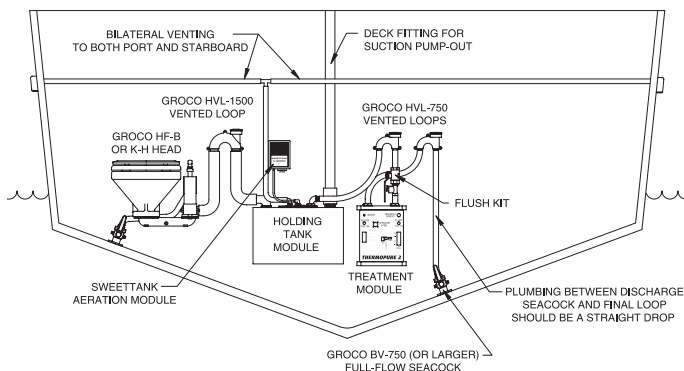
Existing holding tank systems can be upgraded to USCG Certification compliance by adding a THERMOPURE-2® Conversion Kit, which includes the macerator pump, SWEETTANK® Odor Neutralizer, level monitor, and the treatment chamber.

To order a THERMOPURE-2® Conversion Kit, specify the depth (top outside to bottom inside) of your holding tank, plus AC and DC voltages required.

CONVERSION KIT MODELS

MODELS	DESCRIPTION	BREAKERS	
		DC	AC
152-1211-XX*	12VDC and 115VAC	15	15
152-2411-XX*	24VDC and 115VAC	10	15
152-1222-XX*	12VDC and 220VAC	15	10
152-2422-XX*	24VDC and 220VAC	10	10

*XX MEANS HOLDING TANK DEPTH

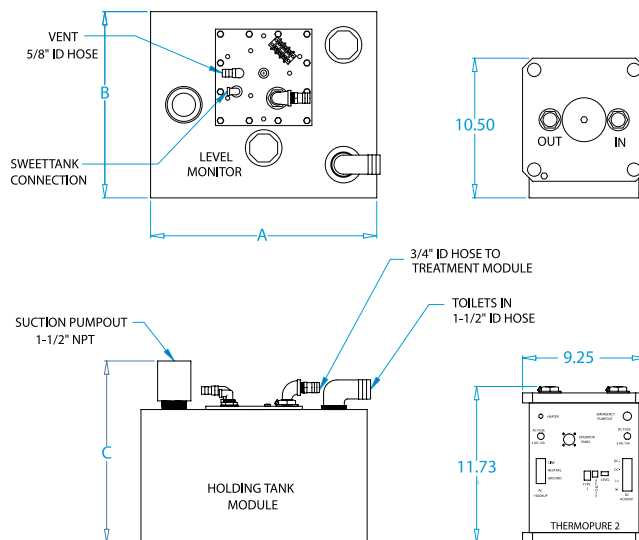


TP-210 SAMPLE INSTALLATION



THERMOPURE-2® MODELS

MODELS	HOLDING TANK CAPACITY	BREAKERS		DIMENSIONS INCHES		
		DC	AC	A	B	C
TP-210 12V/115V	10	15	15	17.0	14.0	13.7
TP-210 24V/115V	10	10	15	17.0	14.0	13.7
TP-210 12V/230V	10	15	10	17.0	14.0	13.7
TP-210 24V/230V	10	10	10	17.0	14.0	13.7
TP-215 12V/115V	15	15	15	24.0	14.0	13.7
TP-215 24V/115V	15	10	15	24.0	14.0	13.7
TP-215 12V/230V	15	15	10	24.0	14.0	13.7
TP-215 24V/230V	15	10	10	24.0	14.0	13.7
TP-220 12V/115V	20	15	15	28.3	14.0	15.0
TP-220 24V/115V	20	10	15	28.3	14.0	15.0
TP-220 12V/230V	20	15	10	28.3	14.0	15.0
TP-220 24V/230V	20	10	10	28.3	14.0	15.0
TP-230 12V/115V	30	15	15	28.0	23.0	15.0
TP-230 24V/115V	30	10	15	28.0	23.0	15.0
TP-230 12V/230V	30	15	10	28.0	23.0	15.0
TP-230 24V/230V	30	10	10	28.0	23.0	15.0



TP-210 DIMENSIONS