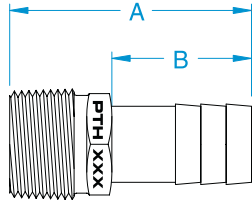


Pipe-to-Hose Adaptors	PTH, PTHC, FF, FFC, PTH-S, PTHC-S, PTHD
Thru-Hull Connections	HTH, HTH-S, HTHC-S, TH-CS, TH-W, TH-S, THXL
Special Purpose Fittings	FTH, PN, PNC, STH, HSTH, HSTHXL, TH, TH-S
Special Purpose Thru-Hull Pieces	THT-530, TD, TD-S
Special Purpose Tail Pieces	TP, TPC
Drain Manifold	DM
Raw Water Manifolds	RWM



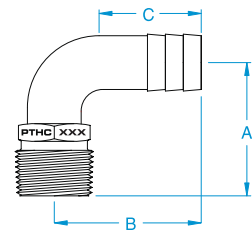
STAINLESS STEEL AND BRONZE FITTINGS

PTH, STRAIGHT STANDARD FLOW BRONZE



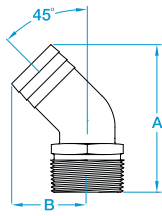
MODEL NO.	NPT PIPE	HOSE ID	DIMENSIONS IN INCHES		WEIGHT (LBS.)	PKG
			A	B		
PTH-500	1/2"	1/2"	2.39	1.38	.17	10
PTH-5062	1/2"	1/2" or 5/8"	2.70	1.80	.18	10
PTH-750	3/4"	3/4"	2.39	1.38	.20	10
PTH-1000	1"	1"	2.48	1.38	.26	10
PTH-1125	1-1/4"	1-1/8"	2.48	1.38	.58	10
PTH-1250	1-1/4"	1-1/4"	2.65	1.55	.60	10
PTH-1500	1-1/2"	1-1/2"	3.00	1.90	.75	10
PTH-2000	2"	2"	3.00	1.90	1.05	1
PTH-2500	2-1/2"	2-1/2"	4.00	2.00	1.75	1
PTH-3000	3"	3"	4.00	2.00	2.58	1
PTH-3000-L	3"	3"	5.00	3.00	2.95	1
PTH-4000	4"	4"	4.25	2.00	3.50	1
PTH-5000	5"	5"	4.25	2.00	5.10	1

PTHC, 90° STANDARD FLOW BRONZE



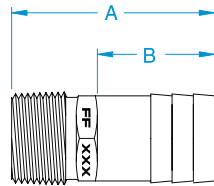
MODEL NO.	NPT PIPE	HOSE ID	DIMENSIONS IN INCHES			WEIGHT (LBS.)	PKG
			A	B	C		
PTHC-5062	1/2"	1/2" or 5/8"	1.90	2.00	1.56	.22	10
PTHC-750	3/4"	3/4"	1.86	2.05	1.43	.29	10
PTHC-1000	1"	1"	2.34	2.40	1.63	.54	10
PTHC-1125	1-1/4"	1-1/8"	2.37	2.44	1.75	.78	5
PTHC-1250	1-1/4"	1-1/4"	2.44	2.53	1.38	.80	5
PTHC-1500	1-1/2"	1-1/2"	2.50	2.50	2.25	1.12	5
PTHC-2000	2"	2"	2.88	3.10	2.25	1.58	1
PTHC-2500	2-1/2"	2-1/2"	3.83	3.35	2.10	2.40	1
PTHC-3000	3"	3"	4.20	3.55	2.00	3.85	1
PTHC-4000	4"	4"	5.05	5.25	2.85	5.90	1
PTHC-5000	5"	5"	5.5	6.20	3.30	9.70	1

PTHD, 45° STANDARD FLOW BRONZE



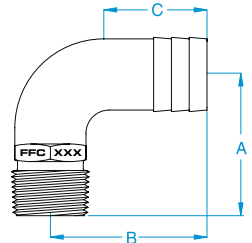
MODEL NO.	NPT PIPE	HOSE ID	DIMENSIONS IN INCHES		WEIGHT (LBS.)	PKG
			A	B		
PTHD-750	3/4"	3/4"	2.98	1.58	.25	10
PTHD-1000	1"	1"	3.15	1.63	.36	10
PTHD-1250	1-1/4"	1-1/4"	3.34	1.68	.56	10
PTHD-1500	1-1/2"	1-1/2"	3.73	1.99	.82	5
PTHD-2000	2"	2"	4.12	2.36	1.15	5
PTHD-2500	2-1/2"	2-1/2"	5.68	2.66	1.96	1
PTHD-3000	3"	3"	6.03	3.06	2.61	1

FF, STRAIGHT FULL FLOW BRONZE



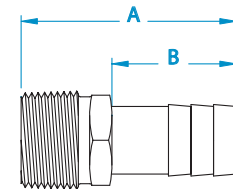
MODEL NO.	NPT PIPE	HOSE ID	DIMENSIONS IN INCHES		WEIGHT (LBS.)	PKG
			A	B		
FF-500	1/2"	3/4"	2.28	1.38	.20	10
FF-750	3/4"	1"	2.39	1.38	.25	10
FF-1000	1"	1-1/4"	2.48	1.38	.32	10
FF-1125	1"	1-1/8"	2.48	1.38	.34	10
FF-1250	1-1/4"	1-1/2"	2.65	1.55	.64	10
FF-1500	1-1/2"	1-3/4"	3.00	1.90	.70	10
FF-2000	2"	2-1/4"	2.89	1.75	.96	10
FF-2500	2-1/2"	2-3/4"	3.47	2.00	1.45	1
FF-3000	3"	3-1/2"	3.61	2.00	2.60	1

FFC, 90° FULL FLOW BRONZE



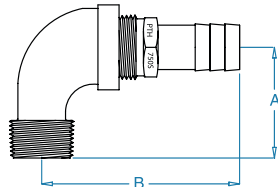
MODEL NO.	NPT PIPE	HOSE ID	DIMENSIONS IN INCHES			WEIGHT (LBS.)	PKG
			A	B	C		
FFC-500	1/2"	3/4"	2.06	2.25	1.38	.32	10
FFC-750	3/4"	1"	2.00	2.20	1.45	.46	10
FFC-1000	1"	1-1/4"	2.70	3.00	1.63	.72	5
FFC-1125	1"	1-1/8"	2.38	2.44	1.75	.90	5
FFC-1250	1-1/4"	1-1/2"	3.60	3.43	1.38	1.18	5
FFC-1500	1-1/2"	1-3/4"	4.25	4.40	1.78	1.45	5
FFC-2000	2"	2-1/4"	5.40	5.15	1.85	2.30	1
FFC-2500	2-1/2"	2-3/4"	6.55	6.00	2.00	4.30	1
FFC-3000	3"	3-1/2"	8.25	6.93	2.10	8.20	1

PTH-S, STANDARD FLOW #316 SS



MODEL NO.	NPT PIPE	HOSE ID	DIMENSIONS IN INCHES		WEIGHT (LBS.)	PKG
			A	B		
PTH-750-S	3/4"	3/4"	2.56	1.50	.26	1
PTH-1000-S	1"	1"	2.95	1.70	.41	1
PTH-1250-S	1-1/4"	1-1/4"	3.35	2.10	.57	1
PTH-1500-S	1-1/2"	1-1/2"	3.54	2.20	.77	1
PTH-2000-S	2"	2"	3.94	2.60	1.29	1
PTH-2500-S	2-1/2"	2-1/2"	4.73	2.80	2.30	1
PTH-3000-S	3"	3"	5.12	3.20	3.12	1

PTHC-S, STANDARD FLOW #316 SS

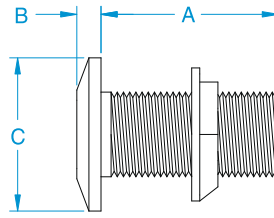


MODEL NO.	NPT PIPE	HOSE ID	DIMENSIONS IN INCHES		WEIGHT (LBS.)	PKG
			A	B		
PTHC-750-S	3/4"	3/4"	1.31	2.97	.51	1
PTHC-1000-S	1"	1"	1.50	3.40	.79	1
PTHC-1250-S	1-1/4"	1-1/4"	1.75	4.00	1.20	1
PTHC-1500-S	1-1/2"	1-1/2"	1.93	4.40	1.62	1
PTHC-2000-S	2"	2"	2.25	5.00	2.61	1
PTHC-2500-S	2-1/2"	2-1/2"	2.68	6.25	4.69	1
PTHC-3000-S	3"	3"	3.06	7.00	6.50	1

STAINLESS STEEL AND BRONZE THRU-HULL FITTINGS

TH, STANDARD LENGTH THRU-HULLS BRONZE AND SS

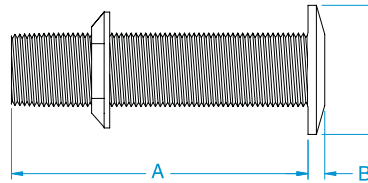
BRONZE	#316 SS	NPS PIPE	DIMENSIONS IN INCHES			WEIGHT W/NUT	PKG
			A	B	C		
TH-500-W	TH-500-WS	1/2"	2.20	.30	1.70	.40	10
TH-750-W	TH-750-WS	3/4"	2.20	.30	1.90	.42	10
TH-1000-W	TH-1000-WS	1"	2.85	.30	2.32	.72	10
TH-1250-W	TH-1250-WS	1-1/4"	2.90	.30	2.62	1.30	12
TH-1500-W	TH-1500-WS	1-1/2"	3.15	.30	2.89	1.64	12
TH-2000-W	TH-2000-WS	2"	3.90	.30	3.33	2.30	1
TH-2500-W	TH-2500-WS	2-1/2"	3.56	.42	4.40	3.75	1
TH-3000-W	TH-3000-WS	3"	4.00	.42	5.50	6.00	1
TH-4000-W	-	4"	5.31	.56	7.00	13.20	1
TH-5000-W	-	5"	5.34	.57	8.18	18.50	1



MARINE
UL
LISTED
647B
TH-W
has nut

For installations where hull thickness dictates the use of a longer fitting.

MODEL	DIMENSIONS IN INCHES			WEIGHT W/NUT	PKG
	A	B	C		
THXL-750-W	5.33	0.30	1.90	0.75	4
THXL-1000-W	5.33	0.30	2.32	1.00	4
THXL-1250-W	5.45	0.30	2.62	1.75	6
THXL-1500-W	5.45	0.30	2.89	2.12	6
THXL-2000-W	5.58	0.30	3.34	2.52	4

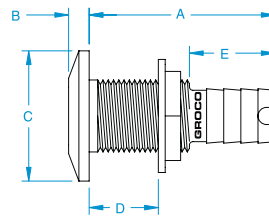


THXL-W
has nut

THXL, EXTRA-LENGTH THRU-HULLS BRONZE

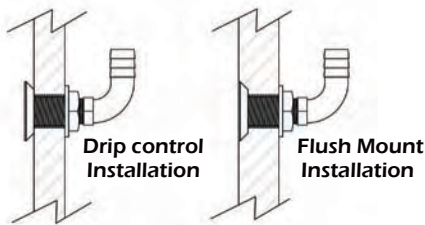
BRONZE	#316 SS	NPS SIZE	HOSE ID	DIMENSIONS IN INCHES						BRONZE #	SS #	PKG
				A	B	C	D*	E				
HTH-500	HTH-500-S	1/2"	1/2"	2.7	0.3	1.7	1.1	1.3	0.4	0.4	10	
HTH-625	HTH-625-S	3/4"	5/8"	2.7	0.3	1.9	1.1	1.3	0.5	0.4	10	
HTH-750	HTH-750-S	3/4"	3/4"	2.7	0.3	1.9	1.2	1.3	0.6	0.6	10	
HTH-1000	HTH-1000-S	1"	1"	2.8	0.3	2.3	1.2	1.3	0.9	0.8	10	
HTH-1125	HTH-1125-S	1"	1-1/8"	2.8	0.3	2.3	1.2	1.3	1.1	1.0	10	
HTH-1250	HTH-1250-S	1-1/4"	1-1/4"	2.8	0.3	2.6	1.1	1.3	1.2	1.1	12	
HTH-1500	HTH-1500-S	1-1/2"	1-1/2"	2.8	0.3	2.9	1.1	1.3	1.5	1.3	12	
HTH-2000	HTH-2000-S	2"	2"	2.8	0.3	3.3	1.1	1.3	2.0	1.8	4	

*Maximum hull thickness.



MARINE
UL
LISTED
647B

HTH, HOSE THRU-HULLS BRONZE AND SS



Drip control
Installation

Flush Mount
Installation

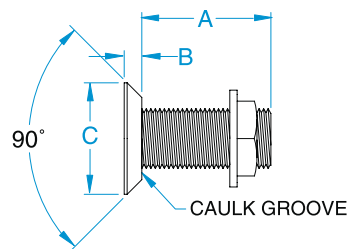
FTH, FLUSH THRU-HULLS BRONZE

The concept is simple! Water doesn't run uphill!

In above waterline drain applications, choose between a drip control installation and a flush mount installation. In the drip control installation, fluid falls cleanly from the tapered edge of the fitting, preventing unsightly stains. The flush installation reduces drag.

MODEL	NPS PIPE	DIMENSIONS IN INCHES			WEIGHT W/NUT	PKG
		A	B	C		
FTH-500-W	1/2"	2.31	.30	1.75	.38	10
FTH-750-W	3/4"	2.31	.30	2.00	.50	10
FTH-1000-W	1"	2.56	.30	2.32	.88	10
FTH-1250-W	1-1/4"	3.31	.30	2.93	1.38	12
FTH-1500-W	1-1/2"	3.50	.30	3.20	2.00	12
FTH-2000-W	2"	3.56	.35	3.90	2.75	1
FTH-2500-W	2-1/2"	3.56	.42	4.40	3.75	1
FTH-3000-W	3"	5.00	.42	5.50	6.00	1
FTH-4000-W	4"	5.31	.56	7.00	13.20	1
FTH-5000-W	5"	5.34	.57	8.18	18.50	1

Order FTH-L if nut is not required.

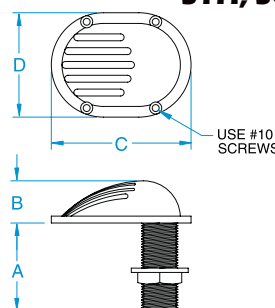


FTH-W
has nut

STH, SCOOP THRU-HULL BRONZE

NPS MODEL	PIPE SIZE	DIMENSIONS IN INCHES				WEIGHT	PKG
		A	B	C	D		
STH-500-W	1/2"	2.20	1.05	3.28	2.55	.70	12
STH-750-W	3/4"	2.20	1.05	4.00	3.05	.95	12
STH-1000-W	1"	2.85	1.05	4.00	3.05	1.25	12
STH-1250-W	1-1/4"	2.90	1.20	4.30	3.35	1.75	9
STH-1500-W	1-1/2"	3.15	1.30	4.83	3.50	2.25	9
STH-2000-W	2"	3.60	1.50	5.75	4.00	3.50	4

Order STH-L if nut is not required.

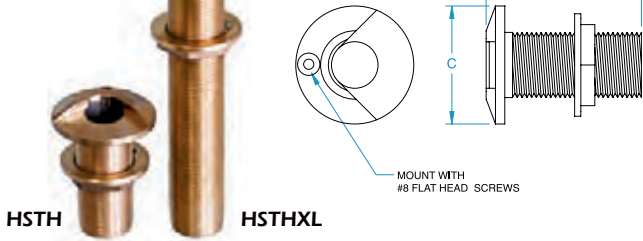


STH-W
has nut

SPECIAL PURPOSE FITTINGS

HSTH, HIGH SPEED EXTRA LENGTH AND STANDARD LENGTH THRU-HULL BRONZE

HSTH-W
has nut



HSTH HSTHXL

HSTH MODELS	NPS SIZE	A	B	C	PKG
HSTH-750-W	3/4"	2.20	0.30	1.90	10
HSTH-1000-W	1"	2.85	0.30	2.32	10
HSTH-1250-W	1-1/4"	2.90	0.30	2.62	12
HSTH-1500-W	1-1/2"	3.15	0.30	2.89	12
HSTH-2000-W	2"	3.60	0.30	3.33	1
HSTH-2500-W	2-1/2"	3.56	0.42	4.40	1
HSTH-3000-W	3"	5.00	0.42	5.50	1

HSTHXL MODELS	NPS SIZE	A	B	C	PKG
HSTHXL-750-W	3/4"	5.33	0.30	1.90	1
HSTHXL-1000-W	1"	5.33	0.30	2.32	1
HSTHXL-1250-W	1-1/4"	5.45	0.30	2.62	1
HSTHXL-1500-W	1-1/2"	5.45	0.30	2.89	1
HSTHXL-2000-W	2"	5.58	0.30	3.33	1

Order HSTH-L if nut is not required.

TH, THRU-HULL LOCK NUTS BRONZE AND #316 SS



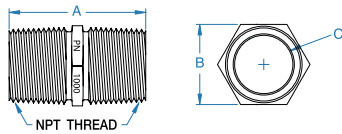
BRONZE	#316 SS	NPS PIPE	DIMENSIONS IN INCHES			WEIGHT (LBS.)	BULK PKG
			A	B	C		
TH-501	TH-501-S	1/2"	1.50	.33	1.13	.05	25
TH-751	TH-751-S	3/4"	1.65	.33	1.30	.04	25
TH-1001	TH-1001-S	1"	2.08	.33	1.55	.11	25
TH-1251	TH-1251-S	1-1/4"	2.50	.45	1.95	.21	25
TH-1501	TH-1501-S	1-1/2"	2.90	.45	2.28	.32	25
TH-2001	TH-2001-S	2"	3.50	.45	2.75	.54	10
TH-2501	TH-2501-S	2-1/2"	4.72	.70	3.46	1.00	10
TH-3001	TH-3001-S	3"	5.45	.70	4.13	1.45	10
TH-4001		4"	7.13	.70	6.00	3.61	1
TH-5001		5"	8.18	.70	6.50		

PN, PIPE-NIPPLES BRONZE



PN Series cast bronze pipe nipples provide exact alloy compatibility for making inter-connections between numerous marine components such as seacocks, strainers and check valves.

- Cast-in wrench flat simplifies installation and removal
- Full flow
- 1/2"- 4" pipe sizes



MODEL	NPT PIPE SIZE	DIMENSIONS IN INCHES			WEIGHT	PKG
		A	B	C		
PN-500	1/2"	1.77	0.88	0.50	0.15	10
PN-750	3/4"	1.77	1.06	0.75	0.19	10
PN-1000	1"	2.34	1.38	1.00	0.31	10
PN-1250	1-1/4"	2.51	1.75	1.25	0.60	10
PN-1500	1-1/2"	2.49	2.00	1.50	0.69	6
PN-2000	2"	2.37	2.50	2.00	0.79	2
PN-2500	2-1/2"	3.41	3.00	2.50	1.24	1
PN-3000	3"	3.53	3.63	3.00	2.25	1
PN-4000	4"	3.53	4.73	4.00	3.20	1

PNC, PIPE NIPPLES WITH CHECK VALVE BRONZE

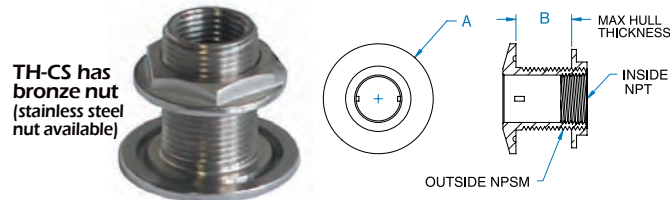


PNC Series are made from PN series cast bronze nipples. A check valve is placed inside to prevent back-flow in plumbing systems. The check valve imposes almost zero flow restriction, and requires less than 1/2 PSI to open. Colored bands indicate flow direction (green to red), confirmed by the permanent laminated tag. Sizes 1/2" to 2". Do not use in diesel fuel or gasoline applications. Refer to PN Series above for dimensions drawing.

MODEL	NPT PIPE SIZE	DIMENSIONS IN INCHES		WEIGHT	PKG
		A	B		
PNC-500	1/2"	1.77	0.88	0.17	10
PNC-750	3/4"	1.77	1.06	0.21	10
PNC-1000	1"	2.34	1.38	0.33	10
PNC-1250	1-1/4"	2.51	1.75	0.62	10
PNC-1500	1-1/2"	2.49	2.00	0.72	6
PNC-2000	2"	2.37	2.50	0.84	2

Opening pressure = .45 psi

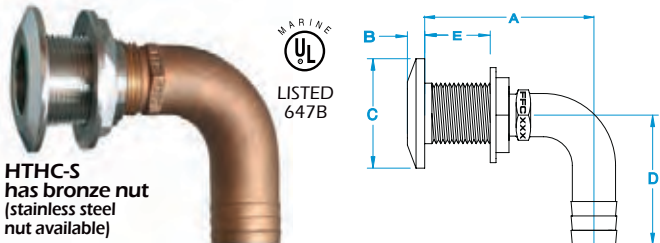
TH-CS, BULK-HEAD FITTING #316 SS



Create your own above-waterline plumbing connection. #316 SS thru-hull fitting is threaded NPT inside.

MODEL	DIAMETER A	B	OUTSIDE NPSM	INSIDE NPT	WEIGHT	PKG
TH-750-CS	1.90	1.2	3/4"	1/2"	.36	1
TH-1000-CS	2.32	1.2	1"	3/4"	.51	1
TH-1250-CS	2.62	1.2	1-1/4"	1"	.79	1
TH-1500-CS	2.89	1.2	1-1/2"	1-1/4"	.85	1
TH-2000-CS	3.33	1.2	2"	1-1/2"	1.53	1

HTHC-S, 90° HOSE THRU-HULLS #316 SS



MODEL	NPS SIZE	HOSE ID	DIMENSIONS IN INCHES					WEIGHT	PKG
			A	B	C	D	E*		
HTHC-750-S	3/4"	3/4"	2.71	.30	1.90	2.25	1.25	.56	1
HTHC-1000-S	1"	1"	2.75	.30	2.32	2.20	1.25	.81	1
HTHC-1250-S	1-1/4"	1-1/4"	2.75	.30	2.62	3.03	1.25	1.06	1
HTHC-1500-S	1-1/2"	1-1/2"	4.70	.30	2.89	3.40	1.25	1.31	1
HTHC-2000-S	2"	1-3/4"	5.40	.30	3.33	3.65	1.25	2.00	1

*Maximum hull thickness.

THT-530

THE CONCEPT

THT-530 makes the installation of standard GROCO® thru-hull fittings possible by a single installer. Slide the thru-hull fitting, flanged end first, over the tool. (It will stop at the proper step.) Tie a length of monofilament to the eye and place it into the already-cut hole in the hull of the boat. Apply caulking to the flange of the fitting, and pull the fitting through the hole and against the hull from inside the boat. Thread the mono-filament through the locknut or seacock. With the fitting pulled firmly against the hull the locknut or the seacock may be screwed onto the fitting.

THRU-HULL FITTING INSTALLATION TOOL

THT-530 fits GROCO Thru-hull Fitting Sizes from 1/2" through 3"

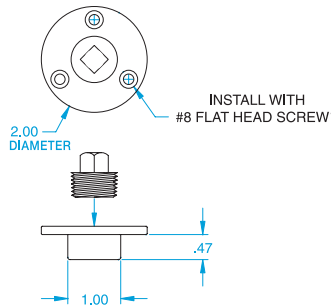


NOT FOR REMOVAL OF OLD THRU-HULL FITTINGS

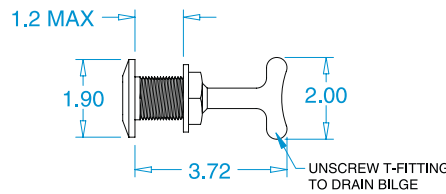
THE CONCEPT

Once your boat is in its cradle, sling, lift, or trailer, draining the bilge is easy with a garboard drain. All models install from the outside. TD-500 allows draining from outside by removing the square-drive plug. TD-750 (available in bronze or #316 SS) drains by removing the T-handle from inside.

HULL DRAINS



TD-500



TD-750-S

TD-750

SPECIAL PURPOSE TAIL PIECES

THE CONCEPT

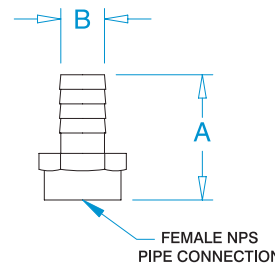
TP and TPC Series tail pieces are threaded with NPS (straight) female pipe thread, and are for use with GROCO® SV Series seacocks or with any product with straight male pipe thread.

The use of TP and TPC Series tail pieces on products with NPT (tapered) pipe thread is recommended only for low pressure applications, and then only with a generous application of pipe sealant or thread tape.

TP SERIES - STRAIGHT BRONZE TAIL PIECE

NEW SIZES

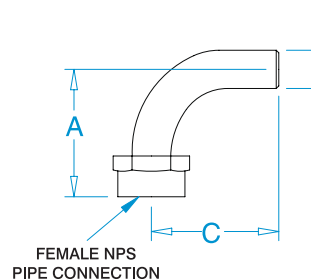
MODEL NO.	PIPE SIZE	DIMENSIONS		PKG
		A	B	
TPT-5062	1/2" NPT	2.16	5/8"	1
TPT-5075	1/2" NPT	2.16	3/4"	1
TPT-625	3/4" NPT	2.16	5/8"	1
TPT-750	3/4" NPT	2.16	3/4"	1
TPT-1075	1" NPT	2.13	3/4"	1
TP-750	3/4" NPS	2.13	3/4"	1
TP-1000	1" NPS	2.13	1"	1
TP-1250	1-1/4" NPS	2.75	1-1/4"	1
TP-1500	1-1/2" NPS	2.75	1-1/2"	1
TP-2000	2" NPS	2.50	2"	1
TP-2500	2-1/2" NPS	2.50	2-1/2"	1



TP Straight Tail Piece

TPC SERIES - 90° BRONZE TAIL PIECE

MODEL NO.	PIPE SIZE	DIMENSIONS			PKG
		A	B	C	
TPC-750	3/4" NPS	2.75	3/4"	2.63	1
TPC-1000	1" NPS	2.75	1"	2.38	1
TPC-1250	1-1/4" NPS	2.50	1-1/4"	2.38	1
TPC-1500	1-1/2" NPS	3.75	1-1/2"	2.75	1
TPC-2000	2" NPS	3.75	2"	3.63	1
TPC-2500	2-1/2" NPS	4.50	2-1/2"	4.50	1

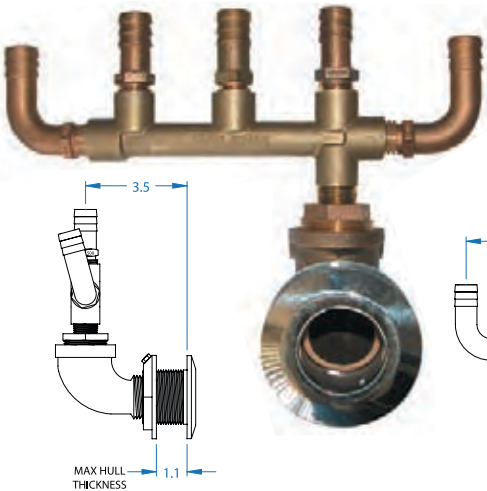


TPC 90° Tail Piece

TPC Series 90° tail pieces are comprised of two pieces. The swivel may be rotated in any direction to facilitate ease of hook-up; then the nut is tightened.

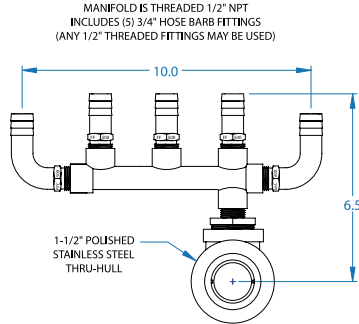
DRAIN MANIFOLD - RAW WATER MANIFOLD

DM-5-1500



THE CONCEPT

To reduce the number of above waterline hull openings in your boat we offer a simple way to plumb multiple 1/2" or 3/4" ID low pressure lines (sinks and showers for example) to a single above waterline overboard drain fitting. The exterior look is clean and attractive, while inside is a compact grouping of all connected hoses.



FEATURES

- Manifold is threaded at the ends, so additional manifolds can be added.
- Includes bronze fittings for five (5) 3/4" ID hose connections.
- Accepts any 1/2" NPT threaded valve or fitting.
- Exterior fitting is polished #316 stainless steel.
- Bonding attachment is included.
- Other sizes are available.

RWM SERIES - RAW WATER MANIFOLD

U.S. PATENT NO. 622,713,381

THE CONCEPT



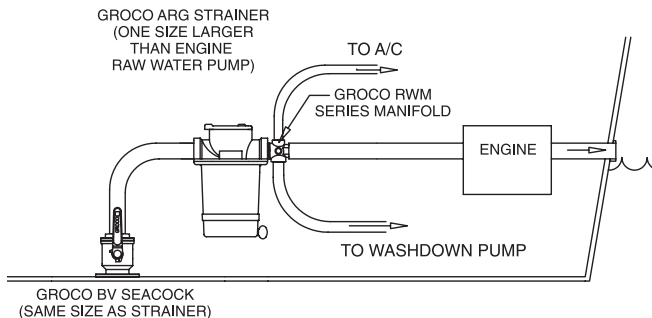
**RWM
Raw Water
Manifold**

While we do not recommend the practice of supplying raw or filtered water to multiple "consumers" from a single inlet source (ie: toilets, washdown pumps, air conditioners, generators, etc.) we do recognize that it is common practice to do so, particularly when one or more of the consumers operates intermittently.

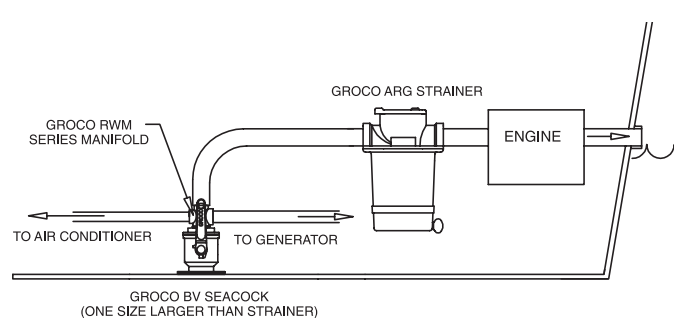
GROCO® RWM Raw Water Manifold requires use of proper pipe or hose sizes, thus reducing the possibility of dangerous flow restrictions to consumers.

The barbed outlet is connected to the primary consumer (your main engine, for example) and is smaller than the threaded inlet which screws into a seacock or strainer outlet of the next larger pipe size (see sample installations). The larger threaded end requires that a larger strainer or seacock be used, thus promoting adequate flow to consumers.

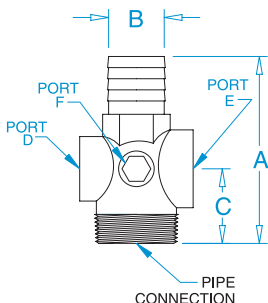
The combined cross-sectional flow of the consumers does not exceed the cross-section of the threaded inlet.



Sample Installation shows RWM Manifold used to distribute filtered water



Sample Installation shows RWM Manifold used to distribute raw (unfiltered) water



MODEL	PIPE	HOSE ID					
		A	B	C	PORT-D	PORT-E	PORT-F
RWM-1250	1-1/4" NPT	3.75	1"	1.37	1/2" NPT	1/2" NPT	1/4" NPT
RWM-1500	1-1/2" NPT	4.13	1-1/4"	1.57	3/4" NPT	3/4" NPT	1/4" NPT
RWM-1500-1	1-1/2" NPT	4.13	1-1/4"	1.57	1/2" NPT	1" NPT	1/4" NPT
RWM-2000	2" NPT	4.65	1-1/2"	2.00	3/4" NPT	3/4" NPT	1/4" NPT
RWM-2000-1	2" NPT	4.65	1-1/2"	2.00	3/4" NPT	1" NPT	1/4" NPT
RWM-2500	2-1/2" NPT	5.00	2"	2.00	3/4" NPT	1" NPT	1/4" NPT
RWM-3000	3" NPT	5.50	2-1/2"	2.50	1" NPT	1-1/4" NPT	1/4" NPT

**Utility Use,
Fuel Transfer,
Oil Change Kits**

GEAR PUMPS

**Utility Use and
Deck Wash Kits**

VANE PUMPS

**Marine &
Automotive**

CENTRIFUGAL PUMPS

**Rotary Pumps
& Kits**

ROTORY PUMPS

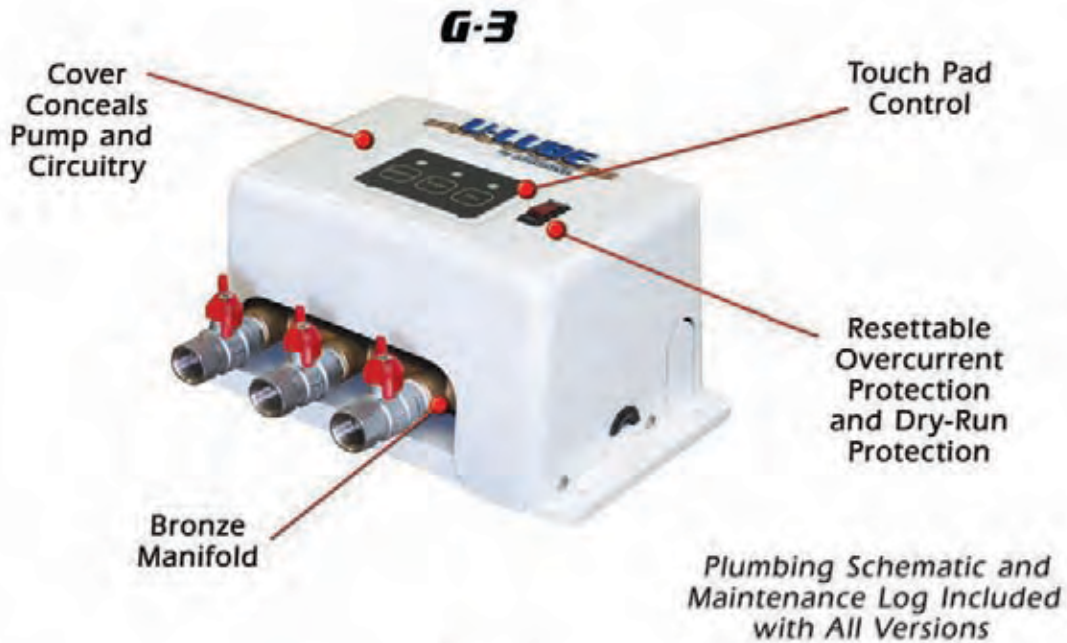
**Pumps &
Accessories**

BILGE PUMP ACCESSORIES



Oil Change Systems

*Powerful Gearpump Delivers Nearly Twice The Flow
Of Competitive Models*



Same Features as G3.
G-4 and G-5 utilize the G-6 Enclosure,
leaving room for expansion.
(See Page 35)

*Oil Pan Adaptors Are Available To Fit
All Common Marine Engines*

Go to www.groco.net for updates, applications, and servicing information.