



AQUAFORCE™ e-MT

PUMP STATIONS



BRAFEMT R3

 **GOULDS**
WATER TECHNOLOGY
a xylem brand

Introducing **AQUAFORCE** e-MT packaged booster system from Goulds Water Technology

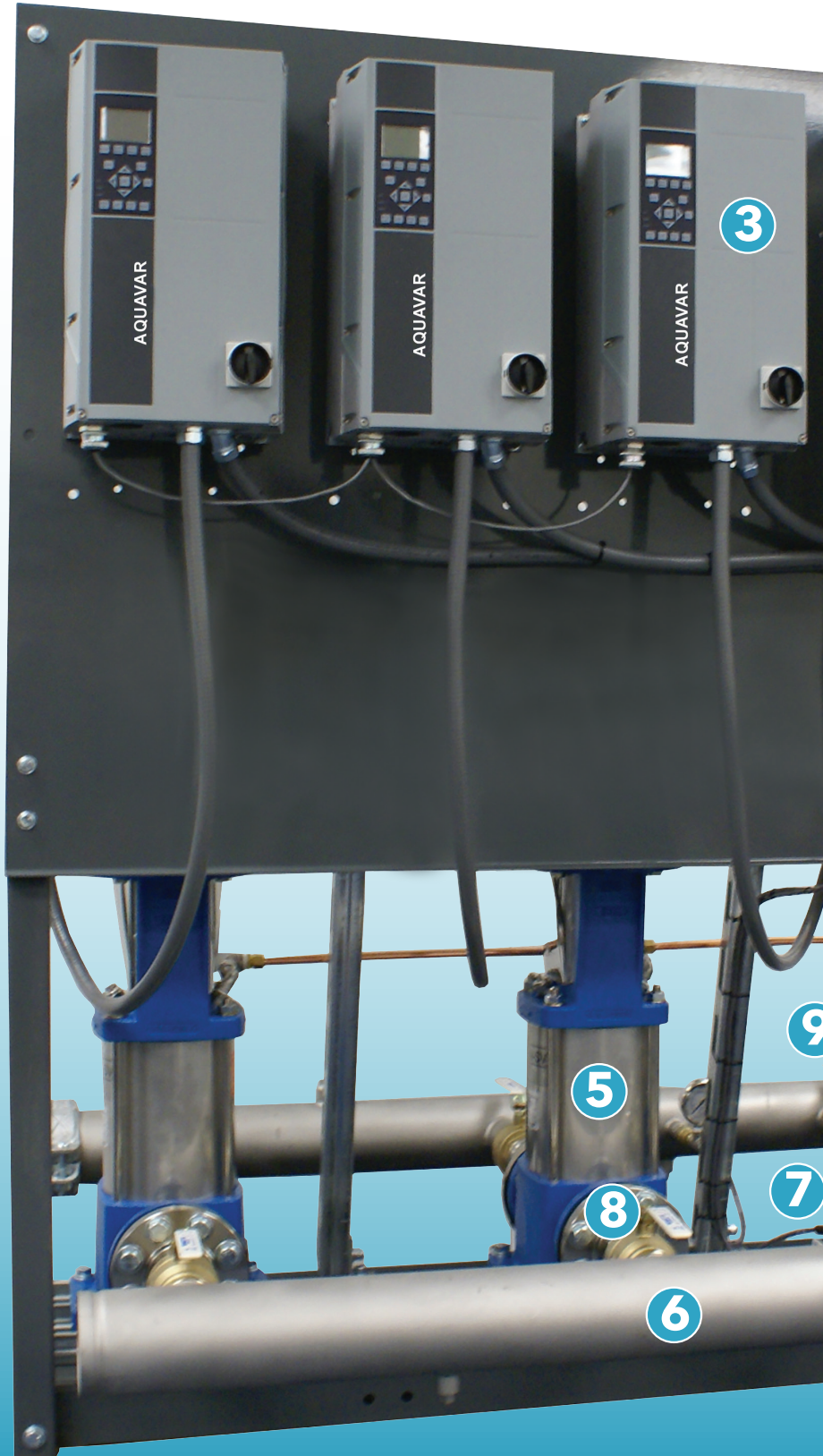
- 2-4 Pump Configurations
(Option for 5 or 6 pumps)
- Up to 2100 GPM and 300 PSI
Working Pressure
- 208-230, 460, 575 Volt Premium
Efficient Motors
- 50 Hz available as engineered to
order
- 304 S.S. Grooved Manifolds
- NEMA 1 or NEMA 12 Control Panel
- 5.7" Color Touchscreen Interface
- Individual Drive Disconnect Switch
- Lead/Lag Alternation
- No Flow Shutdown
- Pipe Fill Mode
- Trending Log
- Dynamic Flow Loss Compensation
- Each Pre-Programmed Station is
Fully Tested for Flow and Pressure

GENERAL

- NSF/ANSI 61 Annex G Certified
- UL/cUL Category QCZJ Package
- Pump System Listing
- UL508A Control Panel Listing
- ASHRAE 90.1-2010 Compliant
- BTL Certified

TYPICAL APPLICATIONS

- Rural Water Districts
- Irrigation
- Industry Plants
- Buildings



Features that make a difference

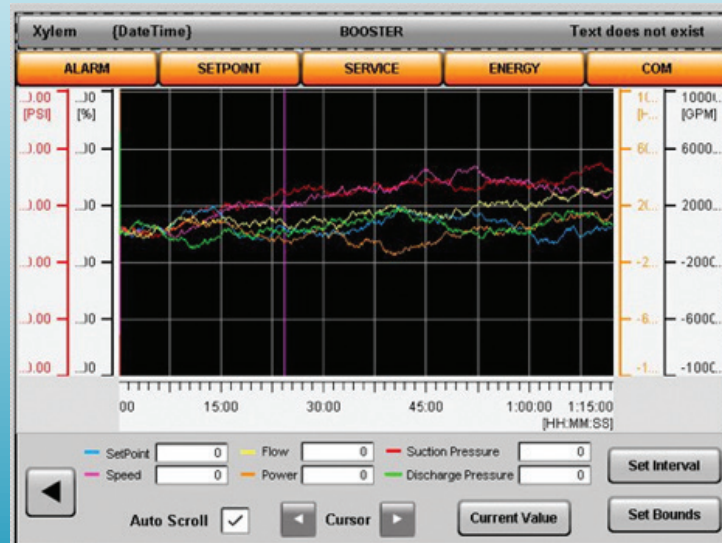
1. E-MT Pump Logic Controller with NEMA 1 or 4 enclosure, a 5.7" LED Color Touchscreen provides unmatched data displayed on a single intuitive screen and trending log covering power, pressure, set point, speed, and flow
2. Station disconnect switch
3. Aquavar NEMA 1 or 12 VFD's with individual fused disconnect permits continued operation and serviceability while maintaining partial or full flow.
4. Premium Efficiency Motors (not shown)
5. Xylem brand e-SV vertical multi-stage pumps, or NPE or SSH end-suction pumps (not shown)
6. 304 S.S. Suction and Discharge Manifolds grooved end (optional flanges)
7. 2.5" Pressure Gauges
8. NSF-61 certified isolation valves
9. Silent Type 316 S.S. Check Valves



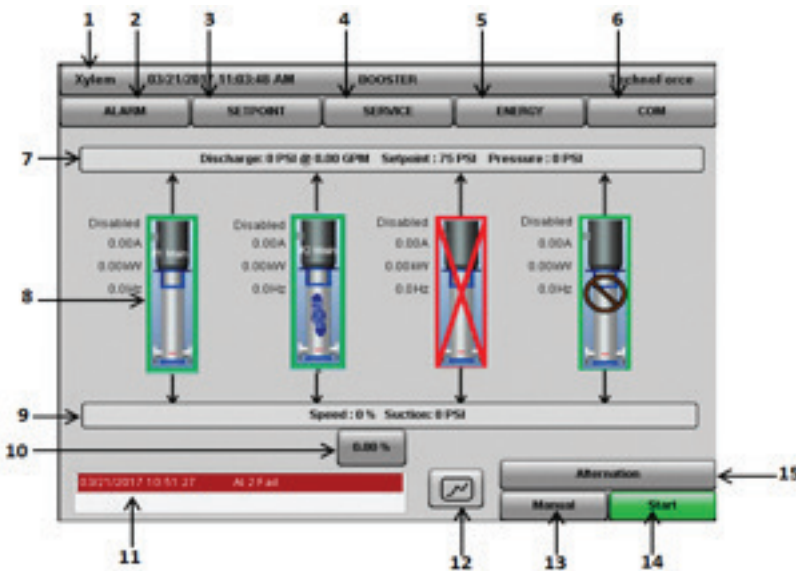
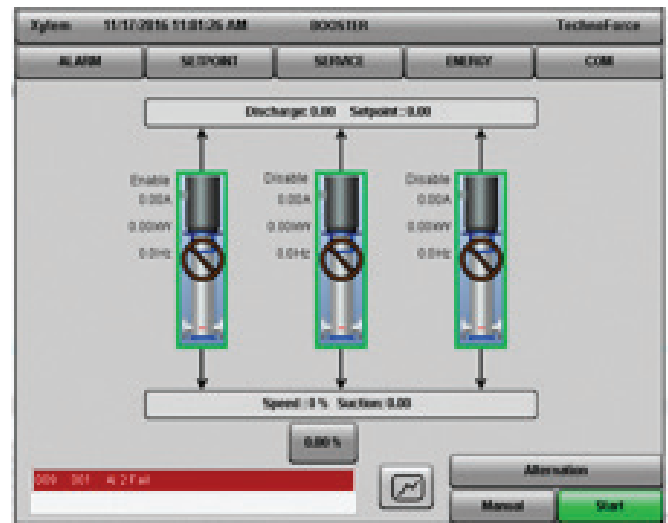
STANDARD OPTIONS

- NEMA 12 VFDs / NEMA 4 Control Enclosure
- Manifold Flanges
- Loss of Prime Assembly
- Low Suction Prime Line
- Low Inlet Pressure Switch
- Alarm Horn
- Modbus Serial or TCP
- Thermal Purge (std default)
- Reducing Coupling
- 5 Point Flow Test
- Witness Test
- Flex Connectors
- Surge Arrestors
- Suction Pressure Transducer (std default)
- Redundant Pressure Transducer

Trending Log Screen



AQUAFORCE home screen



1. Home Tab
2. Alarm Screen Navigation button
3. Setpoint Screen Navigation button
4. Service Screen Navigation button
5. Energy Screen Navigation button
6. Com Screen Navigation button
7. Discharge Bar
8. Pump Status
9. Suction Bar
10. Pump Speed Control Button (manual)
11. Alarm Status Screen
12. Trend Screen Navigation button
13. System Mode of Operation
14. System Start/Stop
15. Manual Alternation



Xylem Inc.
 2881 East Bayard Street Ext., Suite A
 Seneca Falls, NY 13148
 Phone: (844) XYL-PUMP [844-995-7867]
 Fax: (888) 322-5877
 www.xylem.com/goulds

Xylem is a registered trademark of Xylem Inc. or one of its subsidiaries. Goulds is a registered trademark of ITT Manufacturing Enterprises LLC and is used under license. All other trademarks or registered trademarks are property of their respective owners.
 © 2023 Xylem Inc. BRAFEMT R3 June 2023