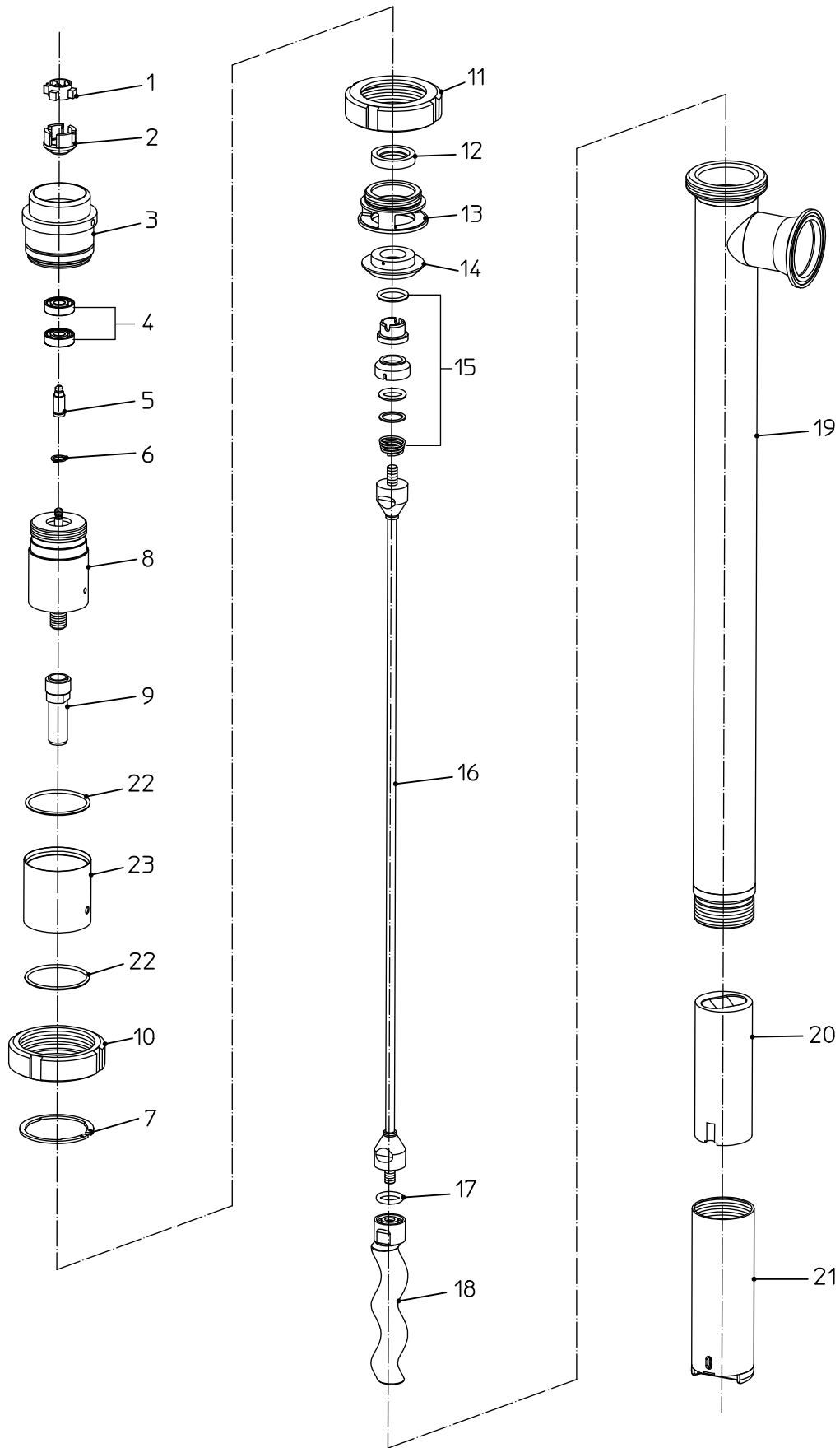




Exzentrerschneckenpumpe F 560 GS...-50/21
Eccentric worm-drive pump
Pompe à vis hélicoïdale excentrée





Pos. No.	Qty. per unit	Description	Part No.	Part No.
		Version according to exploded view No. 560 80 002 – 01/2007 – from Serial No. 5602000	F 560 GS1/2/3-50/21	
1	1	Planetary gear, pre-assembled (Pos. 1-13; 22; 23)	560 28 001	
1	1	Coupling star	410 14 028	
2	1	Coupling cage	420 24 023	
3	1	Reception piece	560 28 140	
4	2	Grooved ball bearing	922 40 005	
5	1	Coupling shaft	550 24 238	
6	1	Circlip	918 10 001	
7	1	Circlip	918 80 002	
8	1	Planetary gear	550 24 200	
9	1	Intermediate shaft	560 28 016	
10	1	Union nut	907 90 011	
11	1	Union nut	907 90 056	
12	1	Shaft seal	925 40 001	
13	1	Foodgrade grease / kg	952 00 012	
13	1	Centering flange	550 24 349	
14.1	1	Seal kit, consisting of:	560 28 006	
15.1	1	Centering disc	550 24 362	
15.1	1	Sliding ring gasket complete comprising:	958 25 102	
		O-ring Ø 15 x 3,5 (FKM)	925 35 003	
		O-ring Ø 19,2 x 3 (FKM)	925 35 001	
16	1	Shaft, immersion length 700 mm	560 28 073	
	1	Shaft, immersion length 1000 mm	560 28 074	
	1	Shaft, immersion length 1200 mm	560 28 075	
	1	Shaft, immersion length 1500 mm	560 28 076	
17	1	O-ring Ø 15 x 3,5 (FKM)	925 35 003	
18	1	Eccentric worm	560 28 064	

Attention: Please always give full description, part no. and quantity of parts required.



Pos. No.	Qty. per unit	Description	Part No.	Part No.
			F 560 GS1/2/3-50/21	
		Version according to exploded view No. 560 80 002 – 01/2007 – from Serial No. 5602000		
		For Type F 560 GS1-50/21 with outlet Rd 58 x 1/6:		
19	1	Outer tube, length 700 mm, electrolytically polished	560 28 032	
	1	Outer tube, length 1000 mm, electrolytically polished	560 28 033	
	1	Outer tube, length 1200 mm, electrolytically polished	560 28 034	
	1	Outer tube, length 1500 mm, electrolytically polished	560 28 035	
	1	Flat seal Ø 36/46 x 5	925 79 030	
		For Type F 560 S2-50/21 with outlet G 1 ½ A:		
19	1	Outer tube, length 700 mm, electrolytically polished	560 28 044	
	1	Outer tube, length 1000 mm, electrolytically polished	560 28 045	
	1	Outer tube, length 1200 mm, electrolytically polished	560 28 046	
	1	Outer tube, length 1500 mm, electrolytically polished	560 28 047	
		For Type F 560 S3-50/21 with outlet Clamp 2“:		
19	1	Outer tube, length 700 mm, electrolytically polished	560 28 056	
	1	Outer tube, length 1000 mm, electrolytically polished	560 28 057	
	1	Outer tube, length 1200 mm, electrolytically polished	560 28 058	
	1	Outer tube, length 1500 mm, electrolytically polished	560 28 059	
20	1	Stator complete PTFE, consisting of: Stator PTFE	560 21 900 550 24 271	
21	1	Stator housing	560 28 067	
22	2	O-Ring Ø 47 x 2,5 (FPM)	925 75 018	
23	1	Protecting tube Sealing paste	560 28 038 953 04 003	

Attention: Please always give full description, part no. and quantity of parts required.