



We deliver values.



Accessories

drum and container pumps

eccentric worm-drive pumps



Tailor-made products, intelligent solutions, comprehensive service and certified safety are the characteristic features of the versatile FLUX pump technology. With FLUX, you can rely on more than 60 years of competence highly appreciated all over the world. The special quality of the products and their long life guarantee process and operational reliability and prevent downtime costs.



The FLUX range of products includes:

- drum pumps
- eccentric worm-drive pumps
- centrifugal immersion pumps
- air-operated diaphragm pumps
- flow meters
- mixers
- complete system solutions
- extensive range of accessories

We offer an extensive range of accessories to supplement our large variety of drum, container and eccentric worm-drive pumps. We would like to present some of the especially interesting products beforehand.

FLUX offers solutions for the most varied types of industries and their special requirements.

FLUX FOOD pumps

The pumps of the FLUX FOOD series and their accessories meet the latest European safety standards for food contact. They comply with Regulation (EC) No. 1935/2004 and the „Plastics“ Regulation (EU) 10/2011 and are allowed to bear the glass-fork symbol. Moreover, they meet the re-quirements of the U.S. Food and Drug Administration (FDA).



FLUX hand nozzles



Outlet-side accessories exchangeable

(Various outlet spouts available for different applications)

Low force required

To operate the nozzle due to the ergonomic design of the handle

Safe handling

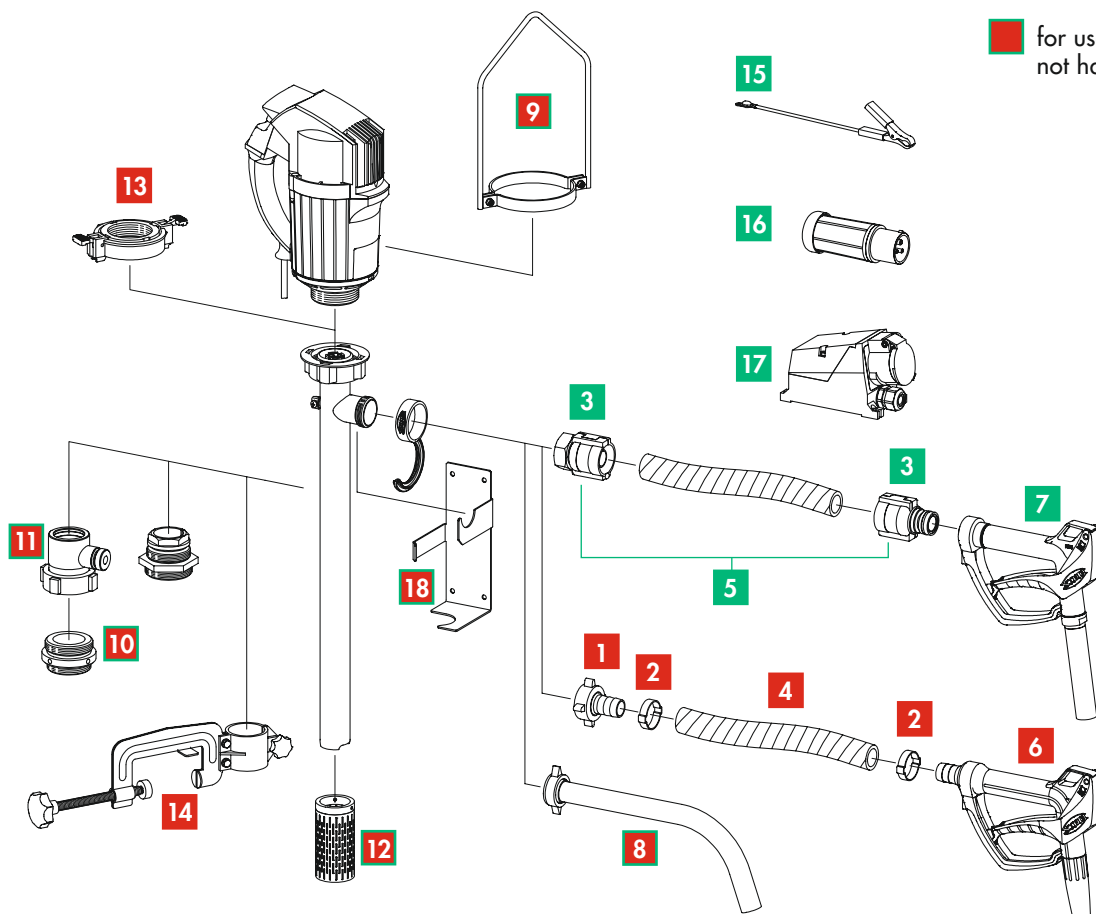
Pivot joint with revolving balls – guarantees absolute tightness even under pressure.

Optimised valve ensures

- Easy operation
- Precise metering
- High flow
- Operational safety due to optimal sealing

Graphical overview of pump accessories

- for use in hazardous areas
- for use in not hazardous areas
- for use in hazardous and not hazardous areas



1	Hose connection	Page 5
2	Hose clip	Page 6
3	Swaged hose fitting	Page 8/9
4	Hose	Page 10
5	Hose kit	Page 7
6	Hand nozzle	Page 11
7	Hand nozzle for use in hazardous areas	Page 12
8	Discharge spout	Page 15
9	Carrying handle	Page 16

10	Compression gland	Page 13
11	FLUX fume gland	Page 14
12	Suction strainer	Page 15
13	Quick action coupling	Page 13
14	Attachment clamp	Page 16
15	Earth (ground) wire	Page 17
16	Explosion-proof plug	Page 18
17	Explosion-proof socket	Page 18
18	Wall bracket	Page 16

Hose connections	6
Hose clips	7
Hose kits	8
Swaged hose fittings	9–10
Hoses	11
Hand nozzles	12–13
Other pump accessories	
– Barrel adapter	14
– Compression gland	
– FLUXCAP (drum cap)	
– Quick action coupling	
– Fume gland	15
– Fume cone	
– Other accessories	
– Discharge spout	16
– Mixing tube	
– Suction strainer	
– Flowback stop valve	
– By-pass valve	
– Attachment clamp	17
– Container clip	
– Mounting flange	
– Wall bracket	
– Hoist	
– Carrying handle	
Accessories for drive motors	
– Earth wire	18
– Motor protection switches	
– Power supply cables	
– Cekon plug	
– Explosion-proof plugs	19
– Explosion-proof sockets	
– Filter-regulator-lubricator unit	
– Fine strainer silencer	
– Pressure regulator	
Accessories for FOOD version	20
– Hose connections	
– Swaged hose fitting	
– Discharge spout	
– Flap valve	
– Hand nozzle	

Hose connections



Hose connection

consisting of: union nut, hose connector and seal.

Suitable for PVC hoses, petroleum hose and special foodgrade hose.

weight metal version:

DN 19 ~ 0,02 kg

DN 32 ~ 0,05 kg

weight PP + PVDF version:

DN 19 ~ 0,01 kg

DN 32 ~ 0,02 kg



Hose connections for eccentric worm-drive pumps

with union nut or clamp connection.

Material: stainless steel

weight:

DN 25 ~ 0,03 kg

DN 38 ~ 0,06 kg



nominal-Ø	part no.
-----------	----------

material: stainless steel, with union nut in brass, nickel-plated G 1¼ female

DN 19	959 04 061
DN 25	959 04 041
DN 32	959 04 042

material: stainless steel, with union nut in stainless steel G 1¼ female

DN 19	959 04 062
DN 25	959 04 063
DN 32	959 04 064

material: aluminium, with union nut in brass, nickel plated G 1¼ female

DN 19	959 04 050
DN 25	959 04 039
DN 32	959 04 040

material: hastelloy C, with union nut in stainless steel G 1¼ female

DN 25	959 04 043
DN 32	959 04 044

material: polypropylene, with union nut G 1¼ female

DN 13	959 04 081
DN 19	959 04 053
DN 25	959 04 052
DN 32	959 04 054

material: polyvinylidene fluoride, with union nut G 1¼ female

DN 13	959 04 082
DN 19	959 04 101
DN 25	959 04 102
DN 32	959 04 103

DN 25 Rd 58 x 1/6	959 04 115
DN 32 Rd 58 x 1/6	959 04 134
DN 38 Rd 58 x 1/6	959 04 130
DN 25 G 1½ female	959 04 002
DN 32 G 1½ female	959 04 003
DN 38 G 1½ female	959 04 004
DN 25 2" clamp connection	959 04 136
DN 32 2" clamp connection	959 04 137
DN 38 2" clamp connection	959 04 109



1-Ear-hose clip
in stainless steel for use
with hose connection



Clamp forceps
for one-ear-hose clip

nominal-Ø	outer-Ø	part no.
-----------	---------	----------

for PVC hose

DN 13	18 mm	959 13 237
DN 19	27 mm	959 13 241
DN 25	34 mm	959 13 243
DN 32	41 mm	959 13 248
DN 38	47 mm	959 13 251
DN 50	60 mm	959 13 255

for petroleum hose

DN 13	21 mm	959 13 239
DN 19	27 mm	959 13 241
DN 25	34 mm	959 13 243
DN 32	43 mm	959 13 249
DN 38	51 mm	959 13 252

for hose for food and chemistry

DN 13	22 mm	959 13 239
DN 19	31 mm	959 13 242
DN 25	37 mm	959 13 246
DN 32	43 mm	959 13 249
DN 38	51 mm	959 13 252

for special hose for food and chemistry

DN 19	31 mm	959 13 242
DN 25	37 mm	959 13 246
DN 32	44 mm	959 13 249

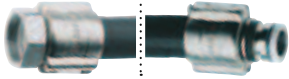
for spezial foodgrade hose

DN 25	37 mm	959 13 246
DN 38	51 mm	959 13 252

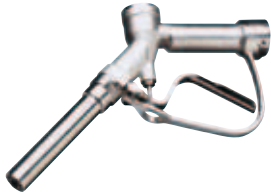
part no.	961 40 811
----------	------------

Hose kits

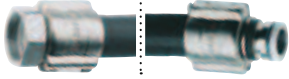
hose kit



suitable for hand nozzle MS
(see page 13)



hose kit



suitable for hand nozzle S
(see page 13)



Hose kits with G 1/4 female drum pump connectors and connection for brass hand nozzle part no. 001 12 340 with Ø 32 mm bore, electrically conductive. Bracket clamp in aluminium nickel-plated

nominal-Ø	length	material hose connector	weight	part no.
-----------	--------	-------------------------	--------	----------

petroleum hose kit

DN 19	2 m	brass	2,6 kg	001 10 091
DN 19	3 m	brass	3,5 kg	001 10 092
DN 25	2 m	brass	2,6 kg	001 10 081
DN 25	3 m	brass	3,5 kg	001 10 082

universal hose kit

DN 21	2 m	brass	2,1 kg	001 10 839
DN 21	3 m	brass	3,0 kg	001 10 840

hose kit for food and chemistry

DN 19	2 m	brass	2,1 kg	001 10 089
DN 19	3 m	brass	3,0 kg	001 10 090
DN 25	2 m	brass	2,3 kg	001 10 811
DN 25	3 m	brass	3,2 kg	001 10 812

Hose kits with G 1/4 female drum pump connectors and connection for stainless steel hand nozzle part no. 001 12 549 with Ø 28 mm bore, electrically conductive. Bracket clamp in aluminium nickel-plated

universal hose kit

DN 21	2 m	S	2,6 kg	001 10 870
DN 21	3 m	S	2,6 kg	001 10 871

hose kit for food and chemistry

DN 19	2 m	S	2,3 kg	001 10 873
DN 19	3 m	S	3,2 kg	001 10 874
DN 25	2 m	S	2,3 kg	001 10 868
DN 25	3 m	S	3,2 kg	001 10 869

Swaged hose fittings for bonding electrically conductive hoses; for use in hazardous areas and for transferring high flammable liquids. Suitable for universal hose, hose for food and chemistry, special hose for food and chemistry

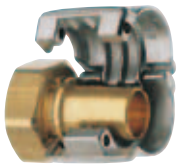


HE Version

Swaged hose fitting
for the connection of pump
and hose

Bracket clamp:
aluminium nickel-plated

weight brass:
DN 13 – G ½ ~ 0,17 kg
DN 38 – G ½ ~ 0,50 kg



SF Version

weight stainless steel:
DN 13 – G ½ ~ 0,06 kg
DN 38 – G ½ ~ 0,50 kg

HE = ferrule type with union nut
(female thread)

SF = version with pinned safety
clamps (Spannfix)

SL = version with bolted clamps
(Spannloc)



SL Version

material hose connector/ seal	nominal-Ø	version	outer-Ø hose in mm	part no.
MS/PUR	DN 13-G ½ female	HE	21	959 13 130
MS/PUR	DN 19-G 1 female	HE	27	959 13 116
MS	DN 19-G 1 male	HE	27	959 13 118
MS/PUR	DN 19-G 1¼ female	HE	27	959 13 192
MS/PUR	DN 19-G 1 female	SL	30-33	959 13 157
MS	DN 19-G 1 male	SL	30-33	959 13 156
MS/PUR	DN 19-G 1¼ female	SL	30-33	959 13 180
MS/PUR	DN 21-G 1¼ female	SL	30-33	959 13 230
MS/PUR	DN 25-G 1 female	HE	34	959 13 097
MS	DN 25-G 1 male	HE	34	959 13 099
MS/PUR	DN 25-G 1¼ female	HE	34	959 13 098
MS/PUR	DN 25-G 1 female	SF	36-38	959 13 158
MS/PUR	DN 25-G 1 male	SF	36-38	959 13 159
MS/PUR	DN 25-G 1¼ female	SF	36-38	959 13 140
MS	DN 25-G 1¼ male	SF	36-38	959 13 188
MS/PUR	DN 32-G 1¼ female	SF	43-45	959 13 014
MS/PUR	DN 32-G 1½ female	SF	43-45	959 13 015
MS/PUR	DN 38-G 1½ female	SF	50-52	959 13 143
MS/PUR	G 1¼ female – G 1 male	reducing adapter		959 06 019
MS/PUR	G 1½ female – G 1¼ male	reducing adapter		959 06 002

S/PTFE	DN 13-G ½ female	SL	22-24	959 13 178
S/PTFE	DN 19-G 1 female	SL	30-33	959 13 160
S/PTFE	DN 19-G 1¼ female	SL	30-33	959 13 181
S/PTFE	DN 21-G 1¼ female	SL	30-33	959 13 231
S/PTFE	DN 25-G 1 female	SF	36-38	959 13 161
S	DN 25-G 1 male	SF	36-38	959 13 162
S/PTFE	DN 25-G 1¼ female	SF	36-38	959 13 144
S/PTFE	DN 32-G 1¼ female	SF	43-45	959 13 145
S/PTFE	DN 32-G 1½ female	SF	43-45	959 13 146
S/PTFE	DN 38-G 1½ female	SF	50-52	959 13 147
S/PTFE	G 1½ female – G 1¼ male	reducing adapter		959 06 005

PP/PE	DN 13-G 1 female	SL	22-24	959 13 285
PP/PE	DN 13-G 1¼ female	SL	22-24	959 13 289
PP/PE	DN 19-G 1 female	SL	30-33	959 13 287
PP/PE	DN 19-G 1¼ female	SL	30-33	959 13 291
PP/PE	DN 21-G 1¼ female	SL	30-33	959 13 293
PP/PE	DN 25-G 1¼ female	SF	36-38	959 13 295
PP/PE	DN 13-G 1 female	SL	22-24	959 13 317
PP/PE	DN 13-G 1¼ female	SL	22-24	959 13 321
PP/PE	DN 19-G 1 female	SL	30-33	959 13 319
PP/PE	DN 19-G 1¼ female	SL	30-33	959 13 323
PP/PE	DN 21-G 1¼ female	SL	30-33	959 13 325
PP/PE	DN 25-G 1¼ female	SL	36-39	959 13 327

Swaged hose fittings

Swaged hose fittings
for the connection of pump
and hose

Bracket clamp: stainless steel

material hose connector/ seal	nominal-Ø	version	outer-Ø hose in mm	part no.
PVDF/PTFE	DN 13-G 1 female	SL	22-24	959 13 286
PVDF/PTFE	DN 13-G 1¼ female	SL	22-24	959 13 290
PVDF/PTFE	DN 19-G 1 female	SL	30-33	959 13 288
PVDF/PTFE	DN 19-G 1¼ female	SL	30-33	959 13 292
PVDF/PTFE	DN 21-G 1¼ female	SL	30-33	959 13 294
PVDF/PTFE	DN 25-G 1¼ female	SF	36-38	959 13 296
PVDF/PTFE	DN 13-G 1 female	SL	22-24	959 13 318
PVDF/PTFE	DN 13-G 1¼ female	SL	22-24	959 13 322
PVDF/PTFE	DN 19-G 1 female	SL	30-33	959 13 320
PVDF/PTFE	DN 19-G 1¼ female	SL	30-33	959 13 324
PVDF/PTFE	DN 21-G 1¼ female	SL	30-33	959 13 326
PVDF/PTFE	DN 25-G 1¼ female	SL	36-39	959 13 328



suitabel hand nozzle
PP see page 12

Swaged hose fittings
for the connection of hose and hand
nozzle (connection hand nozzle Ø
28mm)

Bracket clamp:
aluminium nickel-plated

PP/FKM	DN 19	SL	30-33	959 13 299
PP/EPDM	DN 19	SL	30-33	959 13 300
PP/FKM	DN 21	SL	30-33	959 13 304
PP/EPDM	DN 21	SL	30-33	959 13 305
PP/FKM	DN 25	SF	36-38	959 13 309
PP/EPDM	DN 25	SF	36-38	959 13 310
PP/FKM	DN 19	SL	30-33	959 13 330
PP/EPDM	DN 19	SL	30-33	959 13 331
PP/FKM	DN 21	SL	30-33	959 13 335
PP/EPDM	DN 21	SL	30-33	959 13 336
PP/FKM	DN 25	SL	36-39	959 13 340
PP/EPDM	DN 25	SL	36-39	959 13 341



suitabel hand nozzle
PVDF see page 12

Swaged hose fittings
for the connection of hose and hand
nozzle (connection hand nozzle Ø
28mm)

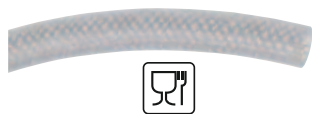
Bracket clamp: stainless steel

PVDF/FKM	DN 13	SL	22-24	959 13 298
PVDF/FKM	DN 19	SL	30-33	959 13 301
PVDF/EPDM	DN 19	SL	30-33	959 13 302
PVDF/FFKM	DN 19	SL	30-33	959 13 303
PVDF/FKM	DN 21	SL	30-33	959 13 306
PVDF/EPDM	DN 21	SL	30-33	959 13 307
PVDF/FFKM	DN 21	SL	30-33	959 13 308
PVDF/FKM	DN 25	SF	36-38	959 13 311
PVDF/EPDM	DN 25	SF	36-38	959 13 312
PVDF/FFKM	DN 25	SF	36-38	959 13 313
PVDF/FKM	DN 13	SL	22-24	959 13 329
PVDF/FKM	DN 19	SL	30-33	959 13 332
PVDF/EPDM	DN 19	SL	30-33	959 13 333
PVDF/FFKM	DN 19	SL	30-33	959 13 334
PVDF/FKM	DN 21	SL	30-33	959 13 337
PVDF/EPDM	DN 21	SL	30-33	959 13 338
PVDF/FFKM	DN 21	SL	30-33	959 13 339
PVDF/FKM	DN 25	SL	36-39	959 13 342
PVDF/EPDM	DN 25	SL	36-39	959 13 343
PVDF/FFKM	DN 25	SL	36-39	959 13 344

Bracket clamp
stainless steel ECTFE coated for
corrosion protection. With screws
and nuts out of HC

DN 13	959 13 345
DN 19	959 13 346
DN 25	959 13 347

Hoses without Inliner – for use with hose connections (page 6) or swaged hose fitting (page 9-10).



PVC hose with fabric lining
suitable for food contact according to Regulation (EC) 1935/2004.
temperature: max. +60 °C

nominal-Ø	outer-Ø	operating pressure max.	weight per meter	part no.
DN 13	20 mm	10 bar	0,22 kg	001 10 008



PVC hose with steel wire-helix
suitable for food contact according to Regulation (EC) 1935/2004
temperature: -5 °C up to +65 °C

DN 20	27 mm	5 bar	0,34 kg	001 10 040
DN 25	33 mm	5 bar	0,51 kg	001 10 041
DN 32	41 mm	4,5 bar	0,65 kg	001 10 042
DN 38	47 mm	4 bar	0,80 kg	001 10 043
DN 50	60 mm	3 bar	1,20 kg	001 10 044



Petroleum hose
tube: NBR black
temperature: -30 °C up to +80 °C

electrically conductive Ω to EN 12115:2011 cover: NBR/PVC

DN 13	21 mm	10 bar	0,30 kg	001 10 076
DN 19	27 mm	10 bar	0,40 kg	001 10 065
DN 25	34 mm	10 bar	0,50 kg	001 10 002



Special foodgrade hose
suitable for food contact according to Regulation (EC) 1935/2004 and FDA CFR 21.
tube: NBR white
cover: NBR/PVC blue
temperature: -25 °C up to +80 °C

electrically conductive Ω /T to EN 12115:2011 cover: CR- black

DN 32	44 mm	25 bar	1,00 kg	001 10 003
DN 38	51 mm	25 bar	1,20 kg	001 10 004

DN 25	37 mm	16 bar	0,80 kg	001 10 022
DN 38	56 mm	16 bar	1,7 kg	001 10 023

Hoses with Inliner – for use with swaged hose fittings (page 9-10).



Universal hose
electrically conductive
 Ω to EN 12115:2011
tube: fluoropolymer THV glueless
temperature: -40 °C up to +100 °C

DN 21	31 mm	16 bar	0,6 kg	001 10 838
-------	-------	--------	--------	------------



Hose for food and chemistry
electrically conductive
 Ω /T to EN 12115:2011
suitable for food contact according to Regulation (EC) 1935/2004 and FDA CFR 21
tube: ultra high molecular PE transparent
cover: EPDM black
temperature: -30 °C up to +100 °C

DN 13	22 mm	16 bar	0,30 kg	001 10 085
DN 19	31 mm	16 bar	0,60 kg	001 10 037
DN 25	37 mm	16 bar	0,80 kg	001 10 030
DN 32	43 mm	16 bar	1,00 kg	001 10 036
DN 38	51 mm	16 bar	1,20 kg	001 10 086



Special hose for food and chemistry
electrically conductive
 Ω to EN 12115:2011
suitable for food contact according to FDA CFR 21
tube: fluorine polymer white
cover: CR black
temperature: -30 °C up to +100 °C

DN 19	31 mm	16 bar	0,80 kg	001 10 097
DN 25	37 mm	16 bar	1,00 kg	001 10 046
DN 32	44 mm	16 bar	1,30 kg	001 10 029

Not explosion-proof hand nozzles

Hand nozzles with hose connection - for use with hoses without inliner.

For low volumes

material: polypropylene
 operating pressure: max. 1,5 bar
 flowrate: max. 35 l/min (water)
 viscosity: max. 350 mPas (cP)
 temperature: max. 45 °C
 weight: 0,11 kg

Material: polypropylene

with safety handle and swivel inlet
 operating pressure: max. 3 bar
 flowrate: max. 80 l/min (water)
 viscosity: max. 800 mPas (cP)
 temperature: max. 50 °C
 weight: 0,26 kg

AdBlue® Version

material: polypropylene
 with safety handle and swivel inlet

Material: polyvinylidene fluoride

with safety handle and swivel inlet;
 operating pressure: max. 3 bar
 flowrate: max. 80 l/min (water)
 viscosity: max. 800 mPas (cP)
 temperature: max. 50 °C
 weight: 0,36 kg

Hand nozzle AL

with safety handle and swivel inlet
 (hose connector or threaded connector); suitable for solvents
 and neutral liquids
 material: brass, nickel-plated
 operating pressure: max. 4 bar
 flowrate: max. 80 l/min (water)
 viscosity: max. 900 mPas (cP)
 temperature: max. 80 °C
 weight: 1,05 kg

Hand nozzles without hose connection - for use with hoses with inliner. Swaged hose fittings see page 10.

Material: polypropylene

with safety handle and swivel inlet
 operating pressure: max. 3 bar
 flowrate: max. 80 l/min (water)
 viscosity: max. 800 mPas (cP)
 temperature: max. 50 °C
 weight: 0,26 kg

Material: polyvinylidene fluoride

with safety handle and swivel inlet;
 operating pressure: max. 3 bar
 flowrate: max. 80 l/min (water)
 viscosity: max. 800 mPas (cP)
 temperature: max. 50 °C
 weight: 0,36 kg

nominal-Ø	seal	outlet	part no.
DN 13	FKM	6 mm	001 13 001
DN 13	FKM	11 mm	001 13 034
DN 19	FKM	11 mm	001 13 039
DN 19	FKM	20 mm	001 13 000
DN 25	FKM	20 mm	001 13 035

DN 19	FKM	25 mm	001 12 500
DN 19	EPDM	25 mm	001 12 506
DN 25	FKM	25 mm	001 12 504
DN 25	EPDM	25 mm	001 12 510

DN 19	FKM	19 mm	001 12 518
-------	-----	-------	------------

DN 19	FKM	25 mm	001 12 501
DN 19	EPDM	25 mm	001 12 507
DN 19	FFKM	25 mm	001 12 512
DN 25	FKM	25 mm	001 12 505
DN 25	EPDM	25 mm	001 12 511
DN 25	FFKM	25 mm	001 12 514

DN 19	NBR	25 mm	001 12 397
DN 25	NBR	25 mm	001 12 172
G 2 female	NBR	25 mm	001 12 171

28 mm	FKM	25 mm	001 12 556
28 mm	EPDM	25 mm	001 12 557

28 mm	FKM	25 mm	001 12 558
28 mm	EPDM	25 mm	001 12 559
28 mm	FFKM	25 mm	001 12 560

Explosion-proof hand nozzles

Hand nozzle with hose connection - for use with hoses without inliner



Material: stainless steel 316 Ti
with safety handle and swivel inlet
operating pressure: max. 4 bar
flowrate: max. 80 l/min (water)
viscosity: max. 800 mPas (cP)
temperature: max. 100 °C
weight: 1,4 kg

nominal-Ø	seal	outlet Ø	part no.
DN 19	PTFE/FEP	28 mm	001 12 541
DN 25	PTFE/FEP	28 mm	001 12 542
G 1 male	PTFE/FEP	28 mm	001 12 543
G 1¼ male	PTFE/FEP	28 mm	001 12 544



Hand nozzle MS
with safety handle and swivel inlet
(hose connector or threaded
connector); suitable for solvents
and neutral liquids
material: brass, nickel-plated
operating pressure: max. 4 bar
flowrate: max. 80 l/min (water)
viscosity: max. 900 mPas (cP)
temperature: max. 80 °C
weight: 1,05 kg

DN 25	PTFE	25 mm	001 12 337
DN 32	PTFE	25 mm	001 12 338
G 1 female	PTFE	25 mm	001 12 339
G 1 male	PTFE	25 mm	001 12 389



Hand nozzles without hose connection - for use with hoses with inliner. Swaged hose fittings see page 10.

Material: stainless steel 316 Ti
with safety handle and swivel inlet
operating pressure: max. 4 bar
flowrate: max. 80 l/min (water)
viscosity: max. 800 mPas (cP)
temperature: max. 100 °C
weight: 1,4 kg

28 mm	PTFE/FEP	28 mm	001 12 549
-------	----------	-------	------------



32 mm	PTFE	25 mm	001 12 340
-------	------	-------	------------

Hand nozzle AL 20

spring actuated, with safety handle
and rigid inlet (threaded connector)
or swivel inlet (threaded connector);
suitable for petrol, diesel oil, fuel oil,
crude oil.
material: aluminium
operating pressure: 0,5 - 4 bar
flowrate: max. 80 l/min (water)
viscosity: max. 50 mPas (cP)
temperature: max. 60 °C
weight: 0,95 kg

G 1 male	PTFE	24 mm	001 12 109
G 1 male	PTFE	24 mm**	001 12 335
G 1 male	NBR	24 mm*	001 12 347

* with swivel inlet, ** for use with fume cone



Hand nozzle AL 20 R (unleaded)

spring actuated, with safety handle
and swivel inlet (threaded connector);
suitable for unleaded petrol and
diesel oil.
material: aluminium
operating pressure: 0,5 - 4 bar
flowrate: max. 80 l/min (water)
viscosity: max. 7 mPas (cP)
temperature: max. 60 °C
weight: 0,95 kg

G 1 male	NBR	21 mm	001 12 097
----------	-----	-------	------------



Longer outlet tube

220 mm long, Ø 20 mm

material	part no.
polypropylene	001 12 228
polyvinylidene fluoride	001 12 241
stainless steel	001 12 285



Other pump accessories



**Adaptor in PP for JUNIORFLUX/
COMBIFLUX pumps**
to secure the pump in canisters or
plastic barrels



Compression gland in PE
to secure the pump in the bunghole
of the barrel



Compression gland in PP
electrically conductive
To secure the pump in the bunghole
of the barrel



**Compression gland in
steel/zinc-plated**
to secure the pump in the bunghole
of the barrel



FLUXCAP
to protect the medium against
abrasive pollution. Is closing
automatically when pump is
pulled out



Quick action coupling SSK 400
for a quick assembly of motor and
barrel pump.
Consisting of: threaded ring (motor
side) and clamping element (pump
side). (For hazardous areas only
allowed in combination with equipo-
tential bonding on pump and motor)

Ø canister-/barrel bunghole	pump-Ø	part no.
45 mm	25 mm	001 14 069
45 mm	28 mm	001 14 070
45 mm	32 mm	001 14 071
65 mm	25 mm	001 14 072
65 mm	28 mm	001 14 073
65 mm	32 mm	001 14 074

connection thread	pump-Ø	part no.
57 x 4 male	41 mm	001 14 067
70 x 6 male	41 mm	001 14 065
70 x 6 male	50 mm	001 14 066

G 2 male	40/41 mm	001 14 054
G 2 male	50 mm	001 14 062
R2 male	25 mm	001 14 076
R2 male	28 mm	001 14 077
R2 male	32 mm	001 14 078

G 2 male / M 64 x 4	40 mm	001 14 061
G 2 male / M 64 x 4	41 mm	001 14 000
G 2 male	50 mm	001 14 003
M 64 x 4 male	50 mm	001 14 002

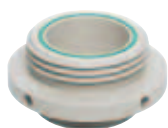
G 2 male	40/41 mm	001 14 339
----------	----------	------------

description	part no.
complete	001 10 802
threaded ring	001 10 800
clamping element	001 10 804

FLUX fume gland prevents emission of high aggressive fumes while pumping out of drums which can cause damage on human beings or the environment



The fume gland consists of a valve part and...



...a threaded ring. For use with a barrel pump.

For use with a gas compensation hose, hose nozzle (959 13 128) is required.

*with o-ring



The fume gland consists of a valve part and...



... a threaded ring. For use with a barrel pump.

For use with a gas compensation hose, hose nozzle (959 13 128) is required.



Union joint hose DN 10 (PP)
for mounting onto valve part PP, S, MS when using a gas compensation nozzle



PE-corrugated hose DN 10
for gas compensation hose



NBR-hose
for gas compensation hose DN 10 electrically conductive



Fume cone PP
weight: 0,10 kg

	pump-Ø	part no.
valve part in polypropylene (PP), o-ring in FKM		
	25 mm	001 14 309
	32 mm	001 14 313
	40 mm	001 14 181
	41 mm	001 14 182
	50 mm	001 14 243

threaded ring in polypropylene (PP), flat seal in FKM

G 2 male	25/32/40/41mm	001 14 218
S 57 x 4 male	25/32/40/41mm	001 14 224
S 60 x 6 female	25/32/40/41mm	001 14 228
S 70 x 6 female	25/32/40/41mm	001 14 226
S 70 x 6 male	25/32/40/41mm	001 14 232
S 70 x 6 male*	25/32/40/41mm	001 14 236
G 2 male	50 mm	001 14 238
S 70 x 6 male	50 mm	001 14 267
S 70 x 6 female	50 mm	001 14 269
S 64 x 5 male	40/41 mm	001 14 230
S 64 x 5 female	40/41 mm	001 14 271
S 64 x 5 male	50 mm	001 14 265

valve part in stainless steel 316 Ti (S), O-ring in FEP

	41 mm	001 14 192
	50 mm	001 14 253
o-ring FKM	28 mm	001 14 319
with gas compensation nozzle G 3/8	41 mm	001 14 194
with gas compensation nozzle G 3/8	50 mm	001 14 245

threaded ring in stainless steel 316 Ti (S), flat seal in PE

G 2 male	41 mm	001 14 325
S 57 x 4 male	41 mm	001 14 329
G 2 male	50 mm	001 14 331

threaded ring in brass, nickel-plated (MS), flat seal in PE

G 2 male	41 mm	001 14 327
G 2 male	50 mm	001 14 333

G 1/4 male	959 13 128
------------	------------

outer-Ø 13 mm	001 10 061
---------------	------------

outer-Ø 17mm	001 10 098
--------------	------------

for longer outlet tube Ø 20 mm	001 14 285
--------------------------------	------------

for outlet Ø 24 mm	001 14 296
--------------------	------------

Other pump accessories



Discharge spout

for direct mounting onto the pump outlet in order to allow the filling of adjacent containers and tanks



Mixing tube

for using a barrel pump type F 430 as a mixer.

It takes just a few steps to change the outer tube against the mixing tube

immersion length: 1000 mm



Suction strainer

to protect the pump against coarse impurities. For mounting on the pump suction

* for use with F 424 S-43/38 and -43/37Z



Flowback stop valve

prevents the flow back of the liquid

type stainless steel:
connection thread:
G 1 1/4 female-G 1 1/4 male



By-pass valve

for eccentric worm-drive pumps. Safety valve against possibly upcoming overpressure in the pump system

connection thread
G 1 1/2 female-G 1 1/2 male
for mounting onto the outlet

range of setting:
stainless steel (316 Ti): 4-6 bar
brass: 2-8 bar



material	nominal-Ø	weight	part no.
with union nut G 1 female for use with JUNIORFLUX/COMBIFLUX			
polypropylene (PP)	DN 19	0,03 kg	959 07 008

with union nut G 1 1/4 female for use with barrel pumps			
aluminium (AL)	DN 25	0,12 kg	959 07 003
stainless steel (S)	DN 25	0,38 kg	959 07 007
polypropylene (PP)	DN 19	0,04 kg	959 07 009

material	pump-Ø	weight	part no.
aluminium (AL)	41 mm	0,73 kg	430 11 193
stainless steel (S)*	41 mm	1,64 kg	430 21 193
polypropylene (PP)	40 mm	0,42 kg	430 41 193

* not allowed for using in hazardous areas

material	pump-Ø (suction strainer-Ø)	weight	part no.
polypropylene (PP)	40/41 (53) mm	0,03 kg	001 10 200
	50 (60) mm	0,04 kg	001 10 205
polyvinylidene-fluoride (PVDF)	40/41 (53) mm	0,04 kg	001 10 245
	50 (60) mm	0,06 kg	001 10 267
stainless steel (S)	41 (53) mm	0,17 kg	001 10 209
	43 (53) mm*	0,17 kg	001 10 294
	50 (60) mm	0,19 kg	001 10 212

material	weight	part no.
for mounting onto the barrel pump outlet of the F 424 - F 430		
stainless steel, seal FKM	0,53 kg	959 14 024
stainless steel, seal FFKM	0,53 kg	959 14 048

for mounting onto the barrel pump foot of the F 430 40/33		
polypropylene (PP)	0,25 kg	959 14 029
polyvinylidene-fluoride (PVDF)	0,28 kg	959 14 038

for mounting onto the barrel pump foot of the F 430 40/33 Z		
polypropylene (PP)	0,25 kg	959 14 030
polyvinylidene-fluoride (PVDF)	0,28 kg	959 14 039

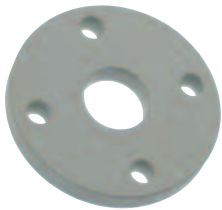
material, seal	connection	weight	part no.
brass, PTFE	flow back tube 300 mm long	3,10 kg	001 18 026
brass, PTFE	hose connection DN 19	2,70 kg	001 18 028
stainless steel, FKM	flow back tube 300 mm long	2,30 kg	001 18 027
stainless steel, FKM	hose connection DN 19	1,90 kg	001 18 029
stainless steel, PTFE	hose connection DN 19	1,90 kg	001 18 046
brass, PTFE	hose connection DN 25	1,90 kg	001 18 056
stainless steel, FKM	hose connection DN 25	1,90 kg	001 18 057
stainless steel, PTFE	hose connection DN 25	1,90 kg	001 18 058



Attachment clamp
to securely the pump in open containers or barrels
material: steel/zinc-plated, PP



Container clip
to suspend the pump into open containers



Mounting flange acc. to DIN 2501
for stationary installation of the barrel pump. The flange is welded onto the outer tube of the pump.
dimensions:
outer-Ø 165 mm
pitch circle-Ø 125 mm,
bores 4 x 18 mm



Wall bracket
for secure storage of the pump.
Incl. fixing screws



Hoist
with infinitely adjustable load balancer



Carrying handle, steel painted in black
for pumps with commutator motor, allowing easy immersion and removal of the pump.



Carrying handle, steel painted in black
for pumps with three-phase gearmotor



Carrying handle, stainless steel
for pumps with single-phase AC-motor, three-phase motor or air motor

carrying handle will be connected to the pump by screws.

Carrying handle, stainless steel
for motor flange Ø 160. Separate fixation of pump and motor – single disconnection of the pump is possible, motor stays at the carrying handle.

pump-Ø	weight	part no.
40/41 mm	0,84 kg	001 10 601
50 mm	0,84 kg	001 10 603
54 mm	0,84 kg	001 10 604

material	pump-Ø	weight	part no.
aluminium (AL), PVC coated	40/41 mm	0,12 kg	001 15 005
	50 mm	0,14 kg	001 15 006

material	weight	part no.
polypropylene	0,37 kg	947 14 021
polyvinylidene fluoride	0,70 kg	947 14 034
stainless steel 1.4571*	1,50 kg	947 14 033

* not allowed with stainless steel pumps which are used in hazardous areas.

pump	weight	part no.
barrel pumps F 424 – F 430	0,37 kg	001 10 426

carrying force	rope length	weight	part no.
9 – 14 kg	2 m	3,75 kg	001 21 000
16 – 21 kg	2 m	4,15 kg	001 21 002

for motor	weight	part no.
F 457	0,35 kg	001 10 533
F 458, F 458-1, F 463 Ex, F 460-1 Ex FBM 4000 Ex	0,35 kg	001 10 557

F 414	0,37 kg	001 10 582
-------	---------	------------

motor	flange	weight	part no.
AC-motor F 403	Ø 120	0,85 kg	001 10 584
3-phase motor F 403 Ex	Ø 120	1,10 kg	001 10 587
3-phase motor up to 3 kW	Ø 160	1,20 kg	001 10 571
3-phase motor up to 4 kW	Ø 160	1,30 kg	001 10 531
Ex-proof 3-phase motor up to 3,3 kW	Ø 160	1,30 kg	001 10 586
air motor FPM 2-8 Ex	Ø 160	1,00 kg	001 10 520

motor	weight	part no.
for 3-phase motor up to 4 kW	1,7 kg	001 10 590

Accessories for drive motors



Earth (ground) wire with crocodile clip
for electrically bonding the explosion-proof pump to the container. For equipotential bonding



Motor protection switch
prevents the three-phase motor from overload. Fixation on motor is possible. Protected to IP 55 not for use in hazardous areas weight: 0,85 kg

the ranges of setting apply to 400 Volt only.



Explosion-proof motor protection switch
explosion proof to II2 EEx de IIC T6 protected to IP 65. for mounting on carrying handle or wall. Weight: 2,64 kg

the ranges of setting apply to 400 Volt only.



Power supply cable
for three-phase motors



Cekon plug, 5-pole

cable cross-section	length	forceps	part no.
spiral cable 3 mm ²	4 m	stainless steel	931 90 023
cable 4 mm ²	2 m	stainless steel	931 90 015

for motors	range of setting	part no.
0,55 kW 2850 min ⁻¹	0,9–1,6 A	936 06 045
0,75 kW 700 min ⁻¹	1,5–2,5 A	936 06 033
0,75 kW 930 min ⁻¹	1,5–2,5 A	936 06 033
0,75 kW 2850 min ⁻¹	1,5–2,5 A	936 06 033
1,1 kW 930 min ⁻¹	2,4–3,5 A	936 06 034
1,1 kW 2850 min ⁻¹	2,4–3,5 A	936 06 034
1,1 kW 700 min ⁻¹	3,2–5,5 A	936 06 035
1,5 kW 2850 min ⁻¹	3,2–5,5 A	936 06 035
2,2 kW 2850 min ⁻¹	3,2–5,5 A	936 06 035
3,0 kW 2850 min ⁻¹	5,0–8,5 A	936 06 036
4,0 kW 2850 min ⁻¹	5,0–8,5 A	936 06 036

0,55 kW 2850 min ⁻¹	1,0–1,6 A	936 06 137
0,75 kW 2850 min ⁻¹	1,6–2,5 A	936 06 118
0,75 kW 930 min ⁻¹	1,6–2,5 A	936 06 118
0,75 kW 700 min ⁻¹	1,6–2,5 A	936 06 118
0,95 kW 700 min ⁻¹	2,5–4,0 A	936 06 119
1,1 kW 2850 min ⁻¹	1,6–2,5 A	936 06 118
1,1 kW 930 min ⁻¹	2,5–4,0 A	936 06 119
1,1 kW 700 min ⁻¹	2,5–4,0 A	936 06 119
1,5 kW 2850 min ⁻¹	2,5–4,0 A	936 06 119
2,0 kW 2850 min ⁻¹	2,5–4,0 A	936 06 119
2,5 kW 2850 min ⁻¹	4,0–6,5 A	936 06 120
3,3 kW 2850 min ⁻¹	4,0–6,5 A	936 06 120

	part no.
pre-assembled with sleeve and Cekon plug, 5 m long	934 08 020
pre-assembled with sleeve without plug, 5 m long	934 08 025
per meter	934 08 901
cable assembly to motor, switch or connector	000 00 250

length	weight	part no.
without phase changing switch	0,14 kg	937 01 014
with phase changing switch	0,20 kg	937 01 035



Explosion-proof plug, 3-pole
CEE-type plug,
explosion-proof to
II 2 G EEx de IIC T6,
220-240 Volt, protected to IP 65



Explosion-proof socket, 3-pole
CEE-type socket,
explosion-proof to
II 2 G EEx de IIC T6,
220-240 Volt, protected to IP 65



Explosion-proof plug, 5-pole
CEE-type plug,
explosion-proof to
II 2 G EEx de IIC T6,
380-415 Volt, protected to IP 65



Explosion-proof socket, 5-pole
CEE-type socket,
explosion-proof to
II 2 G EEx de IIC T6,
380-415 Volt, protected to IP 65



**Filter-regulator-lubricator unit
for compressed air motors type**
F 416 Ex, F 416-1 Ex, F 416-2 Ex
and FPM 4-8 Ex;
for air conditioning and
regulation of the operating
pressure.
Consisting of: water separator,
pressure gauge and lubricator.
Female thread on inlet and outlet



**Fine filter sound absorber
with oil separator**
for noise reduction

Exhaust air tube set for fine filter



Pressure regulator

system	weight	part no.
CEAG	0,35 kg	937 01 030
Stahl	0,27 kg	937 01 018

CEAG	0,95 kg	937 50 041
Stahl	0,92 kg	937 50 022

CEAG	0,35 kg	937 01 029
Stahl	0,27 kg	937 01 020

CEAG	0,95 kg	937 50 040
Stahl	0,92 kg	937 50 024

connection	weight	part no.
G ¼ female – G ¼ female (F416..Ex)	0,75 kg	001 10 100
G ½ female – G ½ female (FPM..Ex)	1,90 kg	001 10 103

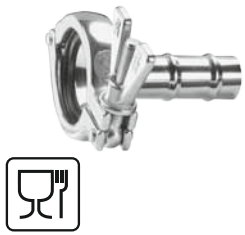
type FS 3	0,57 kg	947 15 003
fixing element	0,1 kg	947 15 004

length: 2 m	0,19 kg	001 10 074
length: 5 m	0,33 kg	001 10 075

type	connection	part no.
FDM 06 / 10 / 12 / 25	G ¼ female	001 10 101
FDM 25 / 40 / 50 / 80	G ½ female	001 10 102

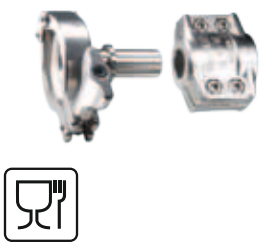
Accessories for FOOD version

Accessories for drum pumps and eccentric worm-drive pumps in FOOD version suitable for food contact according to Regulation (EC) 1935/2004 and FDA CFR 21



Hose connection
material: stainless steel

clamp	nominal-Ø	seal	part no.
1½"	DN 19	FKM	959 04 171
1½"	DN 19	NBR	959 04 172
1½"	DN 25	FKM	959 04 169
1½"	DN 25	NBR	959 04 170
2"	DN 32	FKM	959 04 173
2"	DN 32	NBR	959 04 174
2"	DN 38	FKM	959 04 175
2"	DN 38	NBR	959 04 176



Swaged hose fitting
for the connection of pump and hose suitable for hose for food and chemistry, special hose for food and chemistry. Screw-on type, material: stainless steel

1½"	DN 19	FKM	959 13 354
1½"	DN 19	NBR	959 13 355
1½"	DN 25	FKM	959 13 356
1½"	DN 25	NBR	959 13 357
2"	DN 25	FKM	959 13 358
2"	DN 25	NBR	959 13 359
2"	DN 32	FKM	959 13 360
2"	DN 32	NBR	959 13 361
2"	DN 38	FKM	959 13 362
2"	DN 38	NBR	959 13 363



Discharge spout
material: stainless steel

1½"	FKM	959 07 030
1½"	NBR	959 07 033
2"	FKM	959 07 034
2"	NBR	959 07 035



Flap valve
material: stainless steel

1½"	DN 38	NBR	959 19 006
1½"	DN 38	FKM	959 19 004
2"	DN 50	FKM	959 19 005
2"	DN 50	NBR	959 19 007



Hand nozzle
for use in connection with FLUX barrel pump FP 430 S FOOD for alcohol
material: stainless steel

1½"	PTFE/FKM	001 12 568
-----	----------	------------



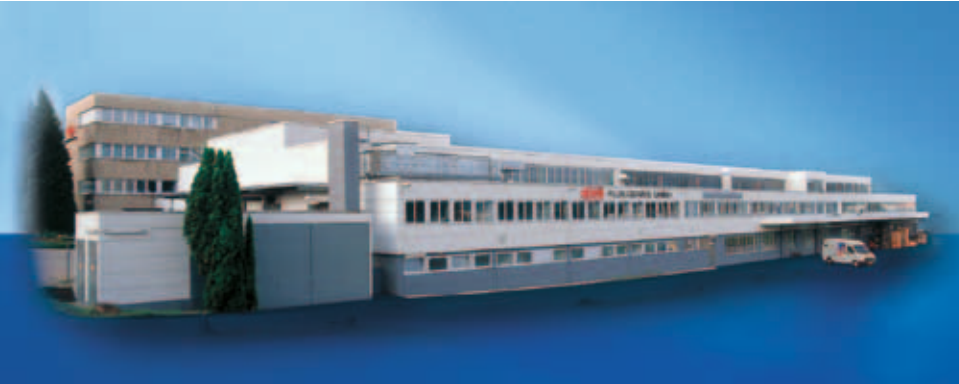


A series of horizontal dotted lines spanning the width of the page, intended for writing notes.

A series of horizontal dotted lines spanning the width of the page, intended for taking notes.



We deliver values.



FLUX is a world renowned brand for the highest standards in pump technology. It all began in 1950 with the invention of the electric barrel pump. Today, FLUX offers a wide range of products which can be configured individually. For example, FLUX pumps are used in the chemical and pharmaceutical industries, in machine and plant construction, as well as in electroplating, sewage treatment plants, and the food industry.

Whether as a stand-alone or a system solution, FLUX quality means long useful life, excellent economic efficiency and a maximum of safety.

Apart from the outstanding FLUX product quality and reliability, our clients appreciate the expertise and dedication of our employees to customer service.

Today, FLUX-GERÄTE GMBH supplies pumps to almost one hundred countries world wide.

FLUX-GERÄTE GMBH

Talweg 12 · D-75433 Maulbronn

Tel +49 (0)7043 101-0 · Fax +49 (0)7043 101-555

info@flux-pumpen.de · www.flux-pumpen.de