

SENSOR VSD™ PUMP SYSTEM

FEATURES

- Constant Pressure Operation
- Variable Speed Control
- Solid State Pressure Sensor
- Nearly Silent Operation / No Cycling
- Operates on 12V DC or 24V DC
- Controls Pressure by Changing Motor Speed
- Self-priming / Runs Dry Without Damage
- No Accumulator Tank Needed
- CSA Listed / EN ISO 8846 Marine / C.E. Certified
- Patent Pending



SPECIFICATIONS

Motor: Permanent magnet DC type
Totally enclosed, non-vented
Double ball bearing armature
Electronic speed control.

Pump: Four piston diaphragm type
Poly propylene body
Viton valves
Santoprene diaphragm
Self-primers 8-10 vertical feet

Model Number	Dimensions - Inches (mm)			Weight lb. (kg)
	Height	Width	Length	
R4400-503	3.75 (95)	6.3 (160)	9.0 (221)	4.3 (2)
R4400-504	3.75 (95)	6.3 (160)	10.3 (252)	6.3 (3)

Model Number	Supply Voltage	Amp Draw 12V (24V)	Max Fuse	Flow GPM (LPM)	Sensor Pressure	Shut-Off Pressure	Inlet Strainer
R4400-503	12-24V DC	8.0 (4.0)	15A	3.7 (13.5)	25 psi (1.7 bar)	35 psi (2.8 bar)	Yes
R4400-504	12-24V DC	12.0 (6.0)	15A	4.5 (16.3)	30 psi (2.1 bar)	40 psi (2.8 bar)	Yes

OPERATION

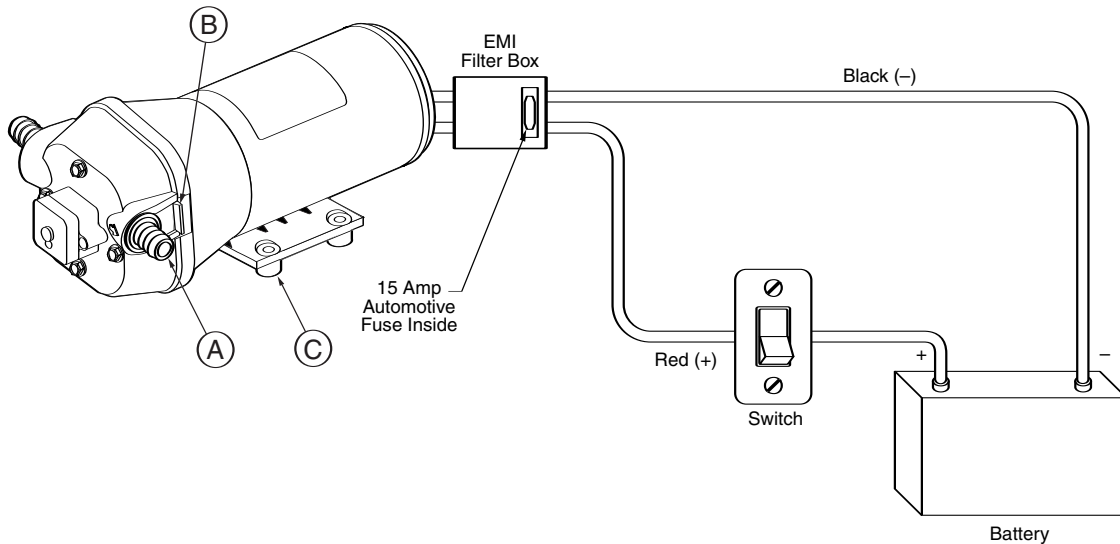
Mount the pump in a dry, ventilated location. The inlet strainer must be installed between the liquid supply and the pump inlet port.

IMPORTANT: Polarity of electrical connections is very important. Insure that the RED (+) motor lead is connected to a fused positive DC circuit. The BLACK (-)

motor lead must be connected to the negative DC circuit. In the event that polarity is reversed, fuse found in the "EMI Filter Box" must be replaced.

To prime the plumbing system, open pump outlet and turn power on to the pump. Allow pump to run until liquid is free of air.

INSTALLATION AND WIRING DIAGRAM



⚠ WARNING Do not operate pump where flammable vapors are present. Do not pump gasoline or other flammable liquids.

⚠ CAUTION Do not freeze pump. Purge with air or anti-freeze to winterize.

⚠ WARNING Turn power off to pump and drain system before servicing. Use chemicals in strict accordance with manufacturer's label, cautions, and directions. Take precautions to prevent injury in case of a pump leak.

INSTALLATION

1. Remove the shipping plugs from the pump ports. Some water from factory testing may spill out.
2. Install port adapter(s) A and/or strainer as required. Firmly push B slide clips forward to lock adapter(s) and/or strainer in place.
3. Push the four rubber grommets C into base plate mounting holes.
4. Mount pump horizontally, or vertically with the pump head lower than the motor. Any plumbing leak should not drip on the motor.
5. 3/4" ID hose may be used (preferably braided or reinforced) to isolate pump from plumbing system. 1/2" ID hose may be used on 3.5 GPM model. Use hose clamps on hose barb connector.

WIRING

Automatic Variable Speed Motor Driven Pumps will operate in either a 12 or 24V DC system. The unique electronics adjust the voltage and current to the motor as needed.

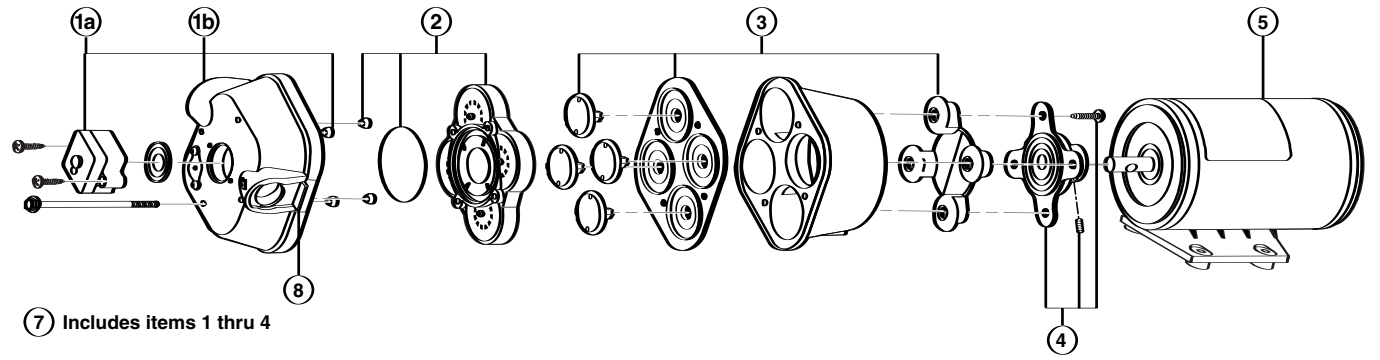
1. Use 14 AWG stranded wire to 20 feet, 12 AWG to 50 feet from distribution panel or power source.
2. Install a 15 amp rated on-off switch on the positive (+) lead from the power source.
3. Use a 15A fuse breaker in the circuit at the distribution panel.

⚠ CAUTION Always wear eye protection. Flush pump with water or neutralizing solution after chemical use.

DISASSEMBLY

1. Refer to exploded view. Remove cover and lift up clip (1a) to unplug the sensor. Remove sensor housing.
2. Loosen but do not remove the four pump head screws and carefully remove the upper housing assembly (1b).
3. Inspect the backflow valve beneath sensor for debris.
4. Change the four sealing ferrules.
5. Inspect the valves for debris and resilience.
6. Replace if necessary, see Step 4 above.
7. Remove rubber plugs to expose notches. Rotate the lower housing (4) so notch opening exposes set screw that holds bearing housing to motor shaft.
8. Loosen the set screw with an 1/8" Allen wrench inserted through the notch opening. Finally, slide lower housing (4) off motor shaft.
10. Test motor by carefully connecting red wire to positive (+) and black wire to negative ground (-) of a 12 or 24V DC battery. Motor will run full speed and slow as sensor is brought closer to magnet's south pole. Replace if necessary.

EXPLODED VIEW



PARTS LIST

Key	Description	R4400-503 Kit Number	R4400-504 Kit Number
0	Service Kit*	20409-043	20409-043
1	Upper Housing (1b) with Sensor Housing (1a)	20404-027	20404-028
2	Check Valve Assembly	20407-030	20407-030
3	Diaphragm Assembly (includes screws)	20403-040	20403-040
4	Cam/Bearing Kit	20400-003	20400-003
5	Motors with Sensor	R2009-157A	R2009-158A
7	Pump Head Assembly	20406-037A	20406-038A
8	Side Clips (pair)	20408-000	20408-000

* Service Kit includes #2, #3, #8 and drive cam assembly.

REASSEMBLY

- Assemble diaphragm and lower housing per the following:
 - Insert four black inner piston stems through four holes in diaphragm.
 - Fold white outer piston to insert into lower housing.
 - Hex stem of inner pistons must align with hex holes in outer pistons.
 - Outer pistons must be aligned with alignment slots on the cam bearing assembly.
 - Drive piston screws partially tight then, carefully center each piston in its quadrant, and tighten the screws to 18 in. lbs. torque.
- Attach lower housing to motor shaft by aligning indentation in shaft with set screw. Set screw must align with the shaft indentation or major damage, poor performance, or high amp draw may result.
- View the inside of the upper housing (1b) and seat the four ferrules in the pump head screw recesses.
- Carefully seat the O-ring in the check valve assembly. O-ring must not slip out of the check valve recess.
- Install check valve assembly into upper housing, pressing firmly. Start the four pump head screws, turning by hand through the ferrule seals, then push through about 1 1/2".
- Assembly on to lower housing (4), align four screws to motor by rotating lower housing if necessary to align feet.
- Tighten pump head screws evenly (30 in. lbs. torque).
- Place sensor housing (1a) and sealing disk against upper housing (1b), insert screws and take care not to cross thread or strip out threads in upper housing.
- Slide the sensor under the clip until it engages in the sensor housing, and install the cover.

TROUBLESHOOTING

Problem

Solution

Failure to prime-motor operates, but no pump discharge

- Debris in pump
- Defective check valve assembly
- Air leak in intake line
- Restricted intake or discharge line
- Punctured diaphragm (pump leaks)
- Crack in pump housing (pump leaks)
- Empty water supply tank

Remove upper housing and clean
 Replace check valve assembly
 Tighten all clamps, inspect plumbing
 Remove lines and inspect
 Replace lower housing assembly
 Replace housing or pump head
 Refill or turn power off to pump

Motor fails to run

- Pump circuit has no power
- Loose or corroded wiring connection
- Blown fuse or open breaker
- Open thermal protector (motor shell hot)
- Defective motor, drive control or pressure sensor

Check wiring, fuse or breaker
 Inspect wire connections
 Replace or reset
 Wait 20 to 30 minutes for auto reset
 Contact factory, 1-949-609-5106

Pump fails to turn off after all fixtures are closes

- Empty water supply tank
- Air trapped in pump
- Debris in pump
- Defective check valve assembly
- Punctured diaphragm (pump leaks)
- Discharge line leak

Refill
 Open faucet closest to pump
 Remove upper housing and inspect
 Replace check valve assembly
 Replace lower housing assembly
 Inspect plumbing and fixtures for leaks

Low flow or pressure

- Debris in inlet strainer
- Water filter needs charging
- Undersize plumbing or long runs
- Defective motor, drive control or pressure sensor

Remove cover and clean screen
 Replace filter cartridge
 Increase plumbing ID
 Contact factory, 1-800-2FLOJET

ACCESSORIES

Quick Connect Port Fittings



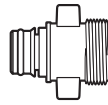
20381-015

QUAD PORT x
 1/2" HOSE BARB
 STRAIGHT
 Viton O-ring



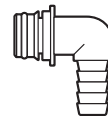
20381-014

QUAD PORT x
 3/4" HOSE BARB
 STRAIGHT
 Viton O-ring



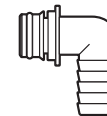
20381-032

QUAD PORT x
 GARDEN HOSE
 STRAIGHT
 Viton O-ring



20381-017

QUAD PORT x
 1/2" HOSE BARB
 90° ELBOW
 Viton O-ring



20381-018

QUAD PORT x
 3/4" HOSE BARB
 90° ELBOW
 Viton O-ring

www.flojet.com

THE PRODUCTS DESCRIBED HEREIN ARE
 SUBJECT TO THE STANDARD FLOJET ONE YEAR
 LIMITED WARRANTY, WHICH IS AVAILABLE FOR
 YOUR INSPECTION UPON REQUEST.

U.S.A.
 Flojet
 666 E. Dyer Rd.
 Santa Ana, CA 92705
 Phone: 714.557.4700
 Fax: 714.628.8478

UNITED KINGDOM
 Flojet
 Bingley Road, Hoddesdon
 Hertfordshire EN11 0BU
 Tel: +44 (0) 1992 450145
 Fax: +44 (0) 1992 467132

CANADA
 Fluid Products Canada
 55 Royal Road
 Guelph, Ontario N1H 1T1
 Tel: 519 821.1900
 Fax: 519 821.2569

JAPAN
 NHK Jabsco Company Ltd.
 3-21-10, Shin-Yokohama
 Kohoku-Ku, Yokohama, 222
 Tel: 045.475.8906
 Fax: 045.475.8908

GERMANY
 Jabsco GmbH
 Oststrasse 28
 22840 Norderstedt
 Tel: +49-40-53 53 73 -0
 Fax: +49-40-53 53 73 -11

ITALY
 Jabsco Marine Italia
 Via Tommaseo, 6
 20059 Vimercate, Milano
 Tel: +39 039 685 2323
 Fax: +39 039 666 307