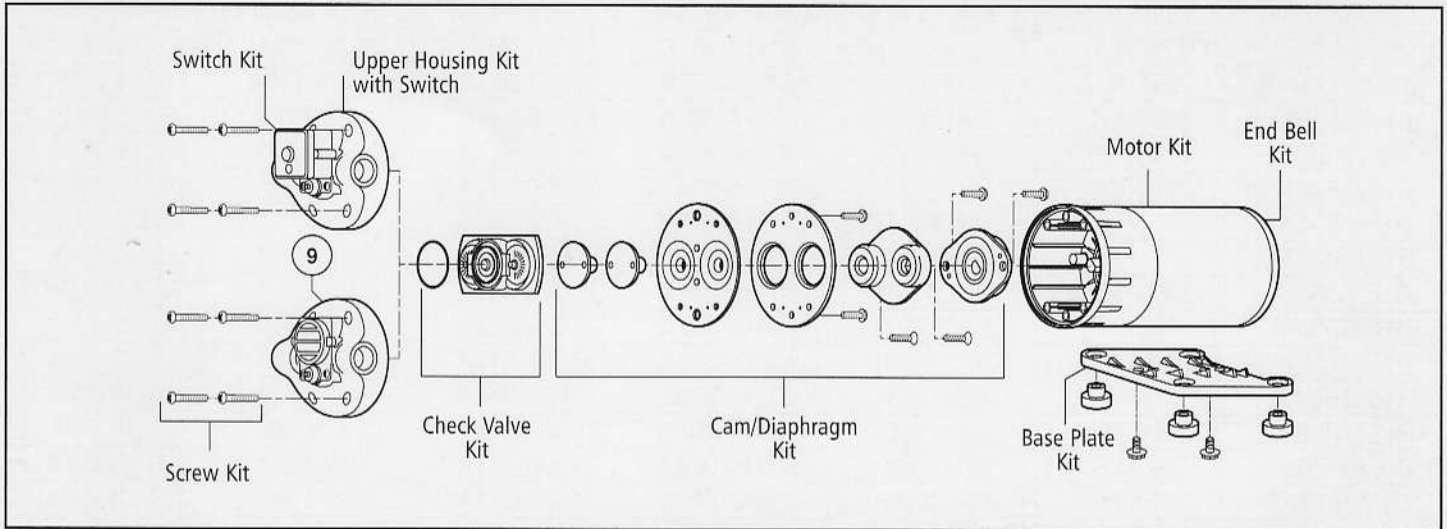


SERVICE PARTS KIT LIST

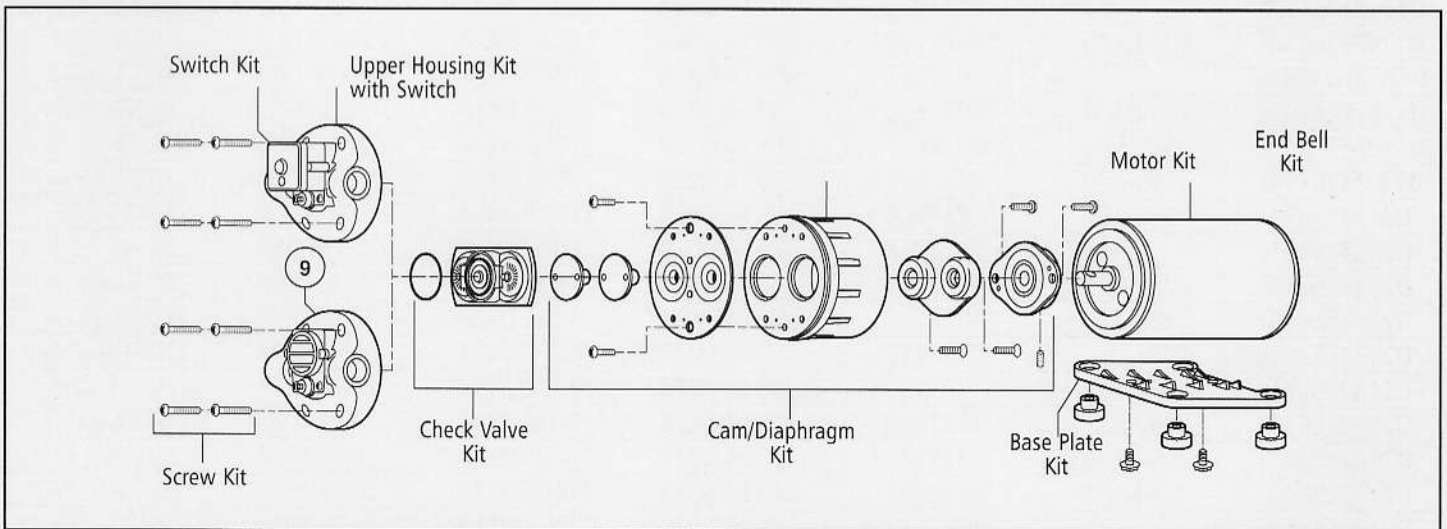
DUPLEX II INDUSTRIAL SERIES

FLOJET®

TYPICAL HIGH PRESSURE DUPLEX II (70 TO 100 PSI)



TYPICAL LOW PRESSURE DUPLEX II (30 TO 60 PSI)

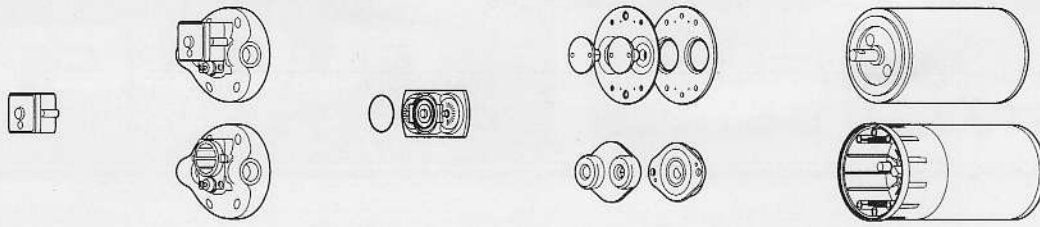


To find correct parts kits: Identify the pump model number in the left column and read across to the kit number required. If the replacement screw kits are required, use kit number 20131-001. Replacement base plate kit number is 11028-101 (plastic) and 11028-109 (metal).

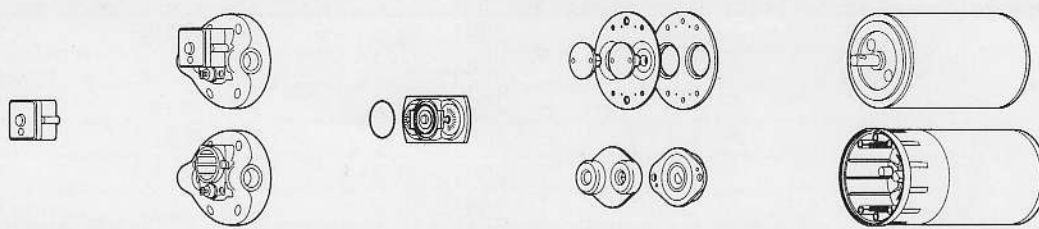


ITT

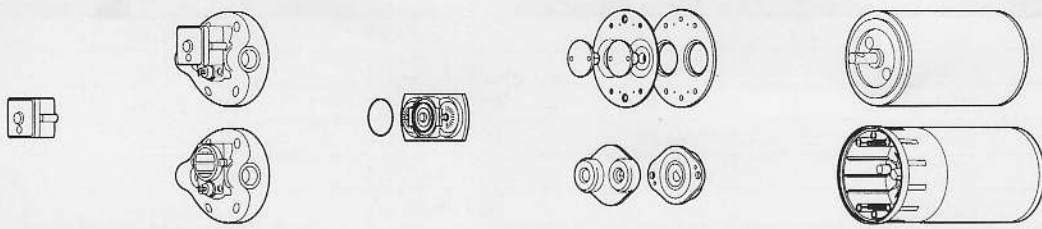
Engineered for life



| Pressure Sw. Upper Housing | | | | | | |
|-----------------------------------|------------|----------------|--------------------|------------------|--------------|----------------|
| Model # | Kit | S/A Kit | Check Valve | Cam/Diaph | Motor | Endbell |
| D0631H5021 | 2090-100 | DH31E502 | 20914-003A | 21022-042A | 2029-000A | 20115-210 |
| D0634H7021 | 2090-120 | DH32E702 | 20914-003A | 21006-043A | 2029-115A | 20772-057A |
| D0732H5011R | 2090-100 | DH31E502 | 20914-003A | 21022-042A | R2039-130A | 20884-202A |
| D1525E7012 | 2090-120 | DH22E701 | 20914-003A | 21006-032A | 2029-117A | 20772-057A |
| D1625E6011 | 2090-121 | DH22E601 | 20914-003A | 21006-032A | 2029-104A | 20772-057A |
| D1625E7012 | 2090-120 | DH22V701 | 20914-003A | 21006-032A | 2029-104A | 20772-057A |
| D1625F1411 | | DH22V141 | 20914-002A | 21022-040A | 2029-114A | 20115-210 |
| D1625H1411 | | DH22E141 | 20914-003A | 21022-040A | 2029-114A | 20115-210 |
| D1625J6011 | 2090-121 | DH22V601 | 20914-002A | 21006-032A | 2029-104A | 20772-057A |
| D1631F1311 | | DH31V131 | 20914-002A | 21022-042A | 2029-000A | 20115-210 |
| D1631F5011 | 2090-121 | DH31V501 | 20914-002A | 21022-042A | 2029-000A | 20115-210 |
| D1631H1311 | | DH31e131 | 20914-003A | 21022-042A | 2029-000A | 20115-210 |
| D1631H5011 | 2090-100 | DH31V501 | 20914-003A | 21022-042A | 2029-000A | 20115-210 |
| D1635E7011 | 2090-120 | DH32E701 | 20914-003A | 21006-033A | 2029-104A | 20772-057A |
| D1635J7011 | 2090-120 | DH32V701 | 20914-002A | 21006-033A | 2029-104A | 20772-057A |
| D1725E6011RL | 2090-121 | DH22E601 | 20914-003A | 21006-032A | R2039-117A | 20772-064A |
| D1725E7012 | 2090-120 | DH22E701 | 20914-003A | 21006-032A | S2039-108A | 20883-205A |
| D1725F1411RL | | DH22V141 | 20914-002A | 21022-040A | R2039-116A | 20772-062A |
| D1725H1411RL | | DH22E141 | 20914-003A | 21022-040A | R2039-116A | 20772-062A |
| D1725J6011RL | 2090-121 | DH22V601 | 20914-002A | 21006-032A | R2039-117A | 20772-064A |
| D1732F1311RL | | DH22V131 | 20914-002A | 21022-042A | R2039-129A | 20772-062A |
| D1732F5011RL | 2090-100 | DH31V501 | 20914-002A | 21022-042A | R2039-128A | 20772-064 |
| D1732H1311RL | | DH31E131 | 20914-003A | 21022-042A | R2039-129A | 20772-062A |
| D1732H5011RL | 2090-100 | DH31E501 | 20914-003A | 21022-042A | R2039-128A | 20772-064 |
| D1735E7011RL | 2090-120 | DH32E701 | 20914-003A | 21006-033A | R2039-117A | 20772-064A |
| D1735J7011RL | 2090-120 | DH32V701 | 20914-002A | 21006-033A | R2039-117A | 20772-064A |
| D2121F5011 | 2090-100 | DH21V501 | 20914-002A | 21022-040A | R2009-114A | 20115-229 |
| D2124F1411 | | DH22V141 | 20914-002A | 21022-040A | 2009-096A | 20115-229 |
| D2124F6011 | 2090-121 | DH22V601 | 20914-002A | 21006-042A | 2009-090A | 20772-051A |
| D2124F6011 | 2090-121 | DH22V601 | 20914-002A | 21006-042A | 2009-092A | 20772-051A |
| D2131F1311 | | DH31V131 | 20914-002A | 21022-042A | 2009-114A | 20115-229 |
| D2132F5011 | 2090-100 | DH31V501 | 20914-002A | 21022-042A | 2009-115A | 20115-229 |
| D2132F6011 | 2090-121 | DH31V601 | 20914-002A | 21006-043A | 2009-100A | 20772-051A |
| D2132V5011 | 2090-100 | DH31V501 | 20914-002A | 21022-022A | 2009-115A | 20115-229 |
| D2132V6011 | 2090-121 | DH31V601 | 20914-002A | 21006-023A | 2009-100A | 20772-051A |
| D2134F1411 | | DH32V141 | 20914-002A | 21022-042A | 2009-096A | 20115-229 |
| D2134F6011 | 2090-121 | DH32V601 | 20914-002A | 21006-043A | 2009-090A | 20772-051A |
| D2135J7011 | 2090-120 | DH32V701 | 20914-002A | 21006-033A | 2009-092A | 20772-051A |
| D2622V6011 | 2090-121 | DH21V601 | 20914-002A | 21006-022A | 2029-116A | 20772-057A |
| D2624F6011 | 2090-121 | DH22V601 | 20914-002A | 21006-042A | 2029-115A | 20772-057A |
| D3121B1211 | | DH21B121 | 20914-001A | 21022-010A | 2009-114A | 20115-229 |
| D3121B3011 | 2090-117 | DH21B301 | 20914-001A | 21022-010A | 2009-114A | 20115-229 |



| Pressure Sw. Upper Housing | | | | | | |
|-----------------------------------|------------|----------------|--------------------|------------------|--------------|----------------|
| Model # | Kit | S/A Kit | Check Valve | Cam/Diaph | Motor | Endbell |
| D3121E1221 | | DH21E121 | 20914-003A | 21022-030A | 2009-114A | 20115-229 |
| D3121E3011 | 2090-117 | DH21E301 | 20914-003A | 21022-030A | 2009-114A | 20115-229 |
| D3121V1221 | | DH21V121 | 20914-002A | 21022-020A | 2009-114A | 20115-229 |
| D3121V3011 | 2090-117 | DH21V301 | 20914-002A | 21022-020A | 2009-114A | 20115-229 |
| D3131B1311 | | DH31B131 | 20914-001A | 21022-012A | 2009-114A | 20115-229 |
| D3131B5011 | 2090-100 | DH31B501 | 20914-001A | 21022-012A | 2009-114A | 20115-229 |
| D3131E1311 | | DH31E131 | 20914-003A | 21022-032A | 2009-114A | 20115-229 |
| D3131E5011 | 2090-100 | DH31E501 | 20914-003A | 21022-032A | 2009-114A | 20115-229 |
| D3131V1311 | | DH31V131 | 20914-002A | 21022-022A | 2009-114A | 20115-229 |
| D3131V5011 | 2090-100 | DH31V501 | 20914-002A | 21022-022A | 2009-114A | 20115-229 |
| D3135B1411 | | DH32B141 | 20914-001A | 21022-012A | 2009-097A | 20115-229 |
| D3135B7011 | 2090-120 | DH32B701 | 20914-001A | 21006-013A | 2009-092A | 20772-051A |
| D3135E1411 | | DH32E141 | 20914-003A | 21022-032A | 2009-097A | 20115-229 |
| D3135E7011 | 2090-120 | DH32E701 | 20914-003A | 21006-033A | 2009-092A | 20772-051A |
| D3135V1411 | | DH32V141 | 20914-002A | 21022-022A | 2009-197A | 20115-229 |
| D3621B1211 | | DH21B121 | 20914-001A | 21022-010A | 2029-000A | 20115-210 |
| D3621B3011 | 2090-117 | DH21E301 | 20914-001A | 21022-010A | 2029-000A | 20115-210 |
| D3621E1211 | | DH21E121 | 20914-003A | 21022-030A | 2029-000A | 20115-210 |
| D3121E3011 | 2090-117 | DH21E301 | 20914-003A | 21022-030A | 2029-000A | 20115-210 |
| D3621V1211 | | DH21V121 | 20914-002A | 21022-020A | 2029-000A | 20115-210 |
| D3621V3011 | 2090-117 | DH21V301 | 20914-002A | 21022-020A | 2029-000A | 20115-210 |
| D3631B1311 | | DH31B131 | 20914-001A | 21022-012A | 2029-000A | 20115-210 |
| D3631B3011 | 2090-100 | DH31B501 | 20914-001A | 21022-012A | 2029-000A | 20115-210 |
| D3631E1311 | | DH31E131 | 20914-003A | 21022-032A | 2029-000A | 20115-210 |
| D3631E5011 | 2090-100 | DH31E501 | 20914-003A | 21022-032A | 2029-000A | 20115-210 |
| D3631V1311 | | DH31V131 | 20914-002A | 21022-022A | 2029-000A | 20115-210 |
| D3631V5011 | 2090-100 | DH31V501 | 20914-002A | 21022-022A | 2029-000A | 20115-210 |
| D3635B1411 | | DH32B141 | 20914-001A | 21022-012A | 2029-114A | 20115-210 |
| D3635B7011 | 2090-120 | DH32V701 | 20914-001A | 21006-013A | 2029-104A | 20772-057A |
| D3635E1411 | | DH32E141 | 20914-003A | 21022-032A | 2029-114A | 20115-210 |
| D3635E7011 | 2090-120 | DH32E701 | 20914-003A | 21006-033A | 2029-104A | 20772-057A |
| D3635V1411 | | DH32V141 | 20914-002A | 21022-022A | 2029-114A | 20115-210 |
| D3722B1211 | | DH21B121 | 20914-001A | 21022-010A | 2039-001A | 20115-181 |
| D3722B3011 | 2090-117 | DH21B301 | 20914-001A | 21022-010A | 2039-001A | 20115-181 |
| D3722E1211 | | DH21E121 | 20914-003A | 21022-030A | 2039-001A | 20115-181 |
| D3722E3011 | 2090-117 | DH21E301 | 20914-003A | 21022-030A | 2039-001A | 20115-181 |
| D3722V1211 | | DH21V121 | 20914-002A | 21022-020A | 2039-001A | 20115-181 |
| D3722V3011 | 2090-117 | DH21V301 | 20914-002A | 21022-020A | 2039-001A | 20115-181 |
| D3732B1311 | | DH31B131 | 20914-001A | 21022-012A | 2039-001A | 20115-181 |
| D3732B5011 | 2090-100 | DH31B501 | 20914-001A | 21022-012A | 2039-001A | 20115-181 |
| D3732E1311 | | DH31E131 | 20914-003A | 21022-032A | 2039-001A | 20115-181 |
| D3732E5011 | 2090-100 | DH31E501 | 20914-003A | 21022-032A | 2039-001A | 20115-181 |

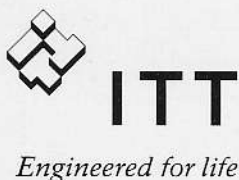


| Pressure Sw. Upper Housing | | | | | | |
|-----------------------------------|------------|----------------|--------------------|------------------|--------------|----------------|
| Model # | Kit | S/A Kit | Check Valve | Cam/Diaph | Motor | Endbell |
| D3732V1311 | | DH31V131 | 20914-002A | 21022-022A | 2039-001A | 20115-181 |
| D3732V5011 | 2090-100 | DH31V501 | 20914-002A | 21022-022A | 2039-001A | 20115-181 |
| D3735B1411 | | DH32B141 | 20914-001A | 21022-012A | S2039-115A | 20115-181 |
| D3735B7011 | 2090-120 | DH32B701 | 20914-001A | 21006-013A | S2039-108A | 20883-205A |
| D3735E1411 | | DH32E141 | 20914-003A | 21022-032A | S2039-115A | 20115-181 |
| D3735E7011 | 2090-120 | DH32E701 | 20914-003A | 21006-033A | S2039-108A | 20883-205A |
| D3735E7011RL | 2090-120 | DH32E701 | 20914-003A | 21006-033A | | 20772-064A |
| D3735V1411 | | DH32V141 | 20914-002A | 21022-022A | S2039-115A | 20115-181 |
| D7125G1411 | | DH22B141 | 20914-001A | 21022-040A | 2009-097A | 20115-229 |
| D7125G6011 | 2090-121 | DH22B601 | 20914-001A | 21006-042A | S2009-092A | 20772-051A |
| D7131G1311 | | DH31B131 | 20914-001A | 21022-042A | 2009-114A | 20115-229 |
| D7131G5011 | 2090-100 | DH31B501 | 20914-001A | 21022-042A | 2009-114A | 20115-229 |
| D7135B7011 | 2090-120 | DH32B701 | 20914-001A | 21006-013A | 2009-092A | 20772-051A |
| D7135I7011 | 2090-120 | DH32V701 | 20914-002A | 21006-013A | 2009-092A | 20772-051A |
| D7625I1411 | | DH22V141 | 20914-002A | 21022-010A | 2029-114A | 20115-210 |
| D7625I6011 | 2090-121 | DH22V601 | 20914-002A | 21006-012A | 2009-104A | 20772-057A |
| D7631I1311 | | DH31V131 | 20914-002A | 21022-012A | 2029-000A | 20115-229 |
| D7631I5011 | 2090-100 | DH31V501 | 20914-002A | 21022-012A | 2029-000A | 20115-210 |
| D7635I1311 | | DH31V131 | 20914-002A | 21022-012A | 2029-122A | 20115-210 |
| D7635I7011 | 2090-120 | DH32V701 | 20914-002A | 21006-013A | 2029-104A | 20772-057A |
| D8625F1411 | | DH22V141 | 20914-002A | 21022-040A | 2029-114A | 20115-210 |
| D8625H1411 | | DH22E141 | 20914-003A | 21022-040A | 2009-114A | 20115-210 |
| D8631F1311 | | DH31V131 | 20914-002A | 21022-042A | 2029-000A | 20115-210 |
| D8631F5011 | 2090-100 | DH31V501 | 20914-002A | 21022-042A | 2009-000A | 20115-210 |
| D8631H1311 | | DH31E131 | 20914-003A | 21022-042A | 2029-000A | 20115-210 |
| D8631H5011 | 2090-100 | DH31E501 | 20914-003A | 21022-042A | 2029-000A | 20115-210 |
| D8635E7011 | 2090-120 | DH32E701 | 20914-003A | 21006-033A | 2029-104A | 20772-057A |
| D8635J7011 | 2090-120 | DH32V701 | 20914-002A | 21006-033A | 2029-104A | 20772-057A |

| Model # | Pressure Sw. Kit | Upper Housing S/A Kit | Check Valve | Cam/Diaph | Motor |
|----------------|-------------------------|------------------------------|--------------------|------------------|--------------|
| D05X000 | 0209-120 | — | 20914-003A | 21022-042A | R2029-131A |
| D1325J7011 | 02090-120 | — | 20914-002A | 21008-233A | O2049-032A |
| D1335E7011 | 02090-120 | — | 20914-003A | 21006-232A | O2049-032A |
| D1335J7011 | 02090-120 | — | 20914-002A | 21006-233A | O2049-032A |
| D1625E7011 | 02090-120 | — | 20914-003A | 21006-232A | O2049-032A |
| D1722F5011RL | 02090-100 | — | 20914-002A | 21022-041A | R2039-123A |
| D1732F5011 | 02090-100 | — | 20914-002A | 21022-042A | S2039-001A |
| D1732H1311 | — | — | 20914-003A | 21022-042A | S2039-129A |
| D1735J7011 | 02090-120 | — | 20914-002A | 21006-233A | S2039-108A |
| D17X000RL | 02090-100 | — | 20914-003A | 21022-041A | R2039-128A |
| D2121F5011R | 02090-100 | — | 20914-002A | 21022-041A | R2009-114A |
| D2122F1212 | — | — | 20914-002A | 21022-041A | O2009-115A |
| D2124F1411R | — | — | 20914-002A | 21006-042A | O2009-090A |
| D2124F5011 | 02090-100 | — | 20914-002A | 21022-041A | O2009-160A |
| D2125F6011R | 02090-121 | — | 20914-002A | 21006-242A | O2009-092A |
| D2131F1311R | — | — | 20914-002A | 21022-042A | R2009-114A |
| D2132F5011R | 02090-100 | — | 20914-002A | 21022-042A | R2009-115A |
| D2132F6011R | 02090-121 | — | 20914-002A | 21006-243A | R2009-100A |
| D2132I5011 | 02090-100 | — | 20914-002A | 21022-012A | O2009-115A |
| D2134F1411R | — | — | 20914-002A | 21006-243A | R2009-090A |
| D2134F6011R | 02090-121 | — | 20914-002A | 21006-243A | R2009-090A |
| D2135J7011R | 02090-120 | — | 20914-002A | 21006-233A | R2009-092A |
| D21X003 | — | — | 20914-002A | 21022-040A | O2009-147A |
| D21X005 | 02090-100 | — | 20914-002A | 21022-042A | O2009-130A |
| D21X007 | — | — | 20914-002A | 21022-012A | O2009-063A |
| D21X013 | 02090-100 | — | 20914-002A | 21022-242A | O2009-159A |
| D2235B7011 | 02090-120 | — | 20914-001A | 21006-213A | O2019-045A |
| D3121B1211R | — | — | 20914-001A | 21022-011 | R2009-114 |
| D312E1211R | — | — | 20914-003A | 21022-031 | R2009-114 |
| D3121E3011R | 2090-117 | — | 20914-003A | 21022-031 | R2009-114 |
| D3121V1211R | — | — | 20914-002A | 21022-021 | R2009-114 |
| D3121V1215 | — | — | 20914-102A | 21022-121 | O2009-114 |
| D3121V1311 | — | — | 20914-002A | 21022-021 | O2009-114 |
| D3121V3011R | 2090-117 | — | 20914-002A | 21022-021 | R2009-114 |
| D3131B1311R | — | — | 20914-001A | 21022-022 | R2009-114 |
| D3131B5011R | 2090-100 | — | 20914-001A | 21022-022 | R2009-114 |
| D3131E1311R | — | — | 20914-003A | 21022-022 | R2009-114 |
| D3131E5011R | 2090-100 | — | 20914-003A | 21022-032 | R2009-114 |
| D3131V1311R | — | — | 20914-003A | 21022-032 | R2009-114 |
| D3131V5011R | 2090-100 | — | 20914-002A | 21022-022 | R2009-114 |
| D3135B7011R | 2090-120 | — | 20914-001A | 21006-213 | R2009-092 |
| D3135E1411R | — | — | 20914-003A | 21006-233 | R2009-092 |
| D3135E7011R | 2090-120 | — | 20914-003A | 21006-233 | R2009-092 |
| D31X014F | — | — | 20914-102A | 21006-122 | O2009-015 |
| D31X015F | — | — | 20914-101A | 21022-112 | O2009-015 |
| D3221B1211R | — | — | 20914-001A | 21022-011 | R2019-057 |
| D3221B3011R | 2090-117 | — | 20914-001A | 21022-011 | R2019-057 |
| D3221E3011R | 2090-117 | — | 20914-003A | 21022-031 | R2019-057 |
| D3221V1211 | — | — | 20914-002A | 21022-021 | O2019-057 |
| D3221V1211R | — | — | 20914-002A | 21022-021 | R2019-057 |
| D3225H1411 | — | — | 20914-003A | 21006-242 | O2019-045 |
| D3231B5011 | 2090-100 | — | 20914-001A | 21022-012 | O2019-057 |

| Model # | Pressure Sw. Kit | Upper Housing S/A Kit | Check Valve | Cam/Diaph | Motor |
|----------------|-------------------------|------------------------------|--------------------|------------------|--------------|
| D3231E5011R | 2090-100 | - | 20914-003A | 21022-032 | R2019-057 |
| D3231F5011 | 2090-100 | - | 20914-002A | 21022-042 | O2019-057 |
| D3235E7011R | 2090-120 | - | 20914-003A | 21006-233 | O2019-045 |
| D3621E1212 | - | - | 20914-003A | 21022-031 | O2029-000 |
| D3631V5012 | 02090-100 | - | 20914-002A | 21022-022 | O2029-000 |
| D36X001A | 02090-103 | - | 20914-002A | 21022-042 | O2029-144 |
| D3722B1211RL | - | - | 20914-001A | 21022-011 | R2039-129 |
| D3722B3011RL | 02090-117 | - | 20914-001A | 21022-011 | R2039-128 |
| D3722E1211RL | - | - | 20914-003A | 21022-031 | R2039-129 |
| D3722V3011RL | 02090-117 | - | 20914-002A | 21022-021 | R2039-128 |
| D3722V5011 | 02090-100 | - | 20914-002A | 21022-021 | R2039-001 |
| D3732B1311RL | - | - | 20914-001A | 21022-012 | R2039-129 |
| D3732B5011RL | 02090-XXX | - | 20914-001A | 21022-012 | R2039-128 |
| D3732E5011RL | 02090-100 | - | 20914-003A | 21022-032 | R2039-128 |
| D3732V1311RL | - | - | 20914-002A | 21022-022 | R2039-129 |
| D3732V5011RL | 02090-100 | - | 20914-002A | 21022-022 | R2039-128 |
| D3735B1411RL | - | - | 20914-001A | 21006-213 | R2039-116 |
| D3735B7011RL | 02090-120 | - | 20914-001A | 21006-213 | R2039-117 |
| D3735E7011RL | 02090-120 | - | 20914-003A | 21006-233 | R2039-117 |
| D3822H5011RL | 02090-100 | - | 20914-003A | 21022-041 | O2029-124 |
| D3835B1411 | - | - | 20914-001A | 21006-213 | O2029-135 |
| D3835B5011 | 02090-100 | - | 20914-001A | 21022-012 | O2029-126 |
| D3835B7011 | 02090-120 | - | 20914-001A | 21006-213 | O2029-134 |
| D3835E7011 | 02090-120 | - | 20914-003A | 21006-233 | O2029-134 |
| D3835H1411 | - | - | 20914-003A | 21006-243 | O2029-135 |
| D3835H5011 | 02090-100 | - | 20914-003A | 21022-042 | O2029-126 |
| D3835V1311 | - | - | 20914-002A | 21022-022 | O2029-133 |
| D3835V5011 | 02090-100 | - | 20914-002A | 21022-022 | O2029-126 |
| D3935E7011 | 02090-120 | - | 20914-003A | 21006-233 | S2039-135 |
| D3935H5011 | 02090-100 | - | 20914-003A | 21022-042 | O2039-134 |
| D7125G1411R | - | - | 20914-001A | 21006-242 | R2009-092 |
| D7125G6011R | 02090-121 | - | 20914-003A | 21006-242 | R2009-092 |
| D7131G1311R | - | - | 20914-001A | 21022-042 | R2009-114 |
| D7131G5011R | 02090-100 | - | 20914-001A | 21022-042 | R2009-114 |
| D7134E3011 | 02090-117 | - | 20914-003A | 21022-032 | O2009-152 |
| D7135I7011R | 02090-120 | - | 20914-002A | 21006-213 | O2009-092 |
| D71X000 | - | - | 20914-001A | 21006-313 | O2009-138 |
| D71X000R | - | - | 20914-001A | 21006-313 | R2009-138 |
| D71X001 | - | - | 20914-001A | 21006-313 | O2009-138 |
| D71X004 | - | - | 20914-002A | 21022-011 | O2009-145 |
| D7225G1411 | - | - | 20914-001A | 21006-242 | O2019-045 |
| D7225G1411R | - | - | 20914-001A | 21006-242 | R2019-045 |
| D7231B5011 | 02090-100 | - | 20914-001A | 21022-012 | O2019-057 |
| D7231B5011R | 02090-100 | - | 20914-001A | 21022-012 | R2019-057 |
| D8635J7011 | 02090-120 | - | 20914-002A | 21006-233 | O2029-104 |

www.flojet.com



USA

Jabco
Cape Ann Industrial Park
1 Kondelin Road
Gloucester, MA 01930
Tel: +1 976 281 0440
Fax: +1 976 283 2619

UK

Jabco
Bingley Road, Hoddesdon
Hertfordshire EN 11 0BU
Tel: +44 1992 450145
Fax: +44 1992 467132

CANADA

Fluid Products Canada
55 Royal Road
Guelph, Ontario N1H 1T1
Tel: +1 519 821 1900
Fax: +1 519 821 5316

JAPAN

NHK Jabco Co Ltd.
3-21-10, Shin-Yokohama
Kohoku-ku
Yokohama 222-0033
Tel: +81 045 475 8906
Fax: +81 045 477 1162

GERMANY

Jabco GmbH
OststraBe 28
22844 Norderstedt
Tel: +49 40 5353 730
Fax: +49 40 5353 7311

ITALY

Jabco Marine Italia
Via Tommaseo, 6
20059 Vimercate, Milano
Tel: +39 039 685 2323
Fax: +39 039 666 307