

# Fig. 4001

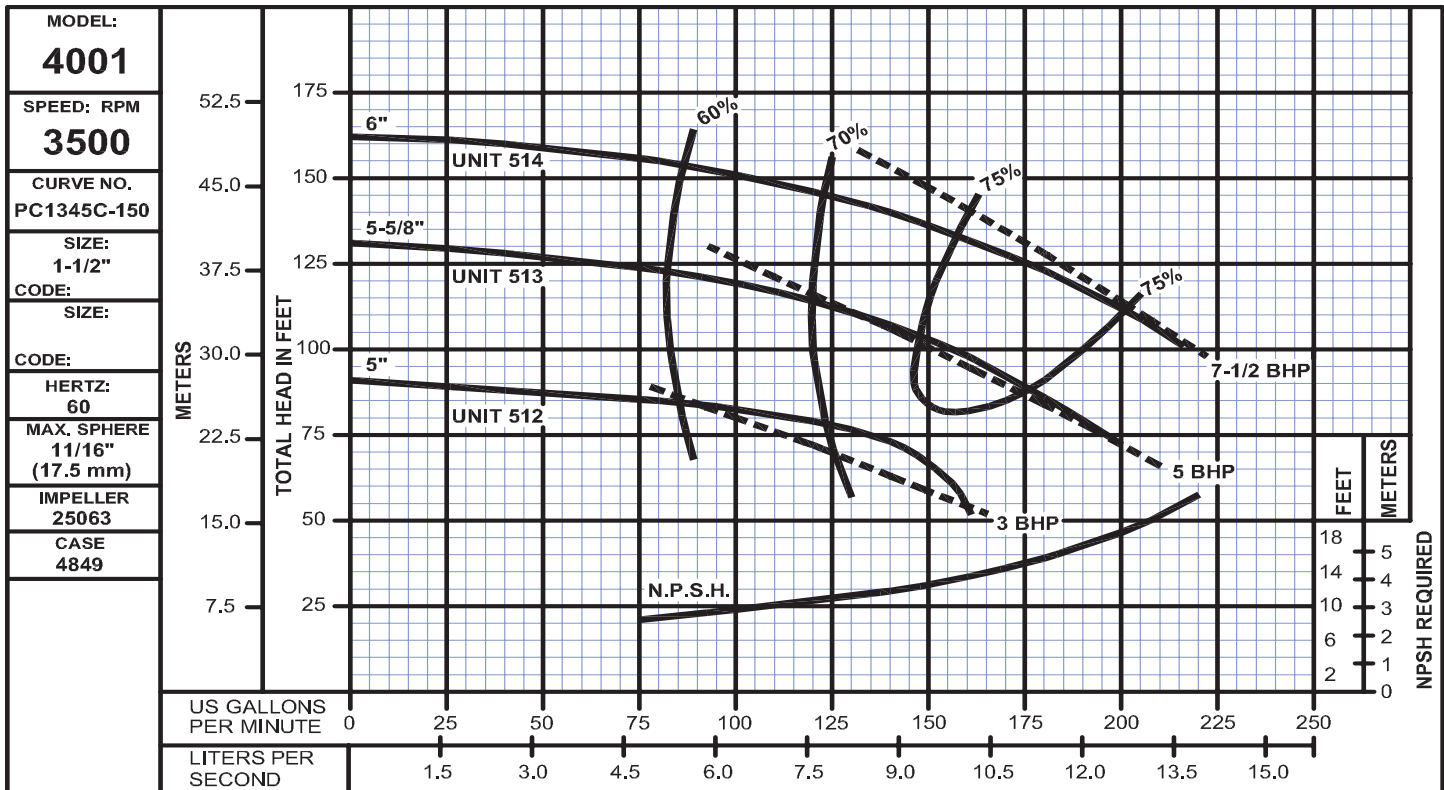
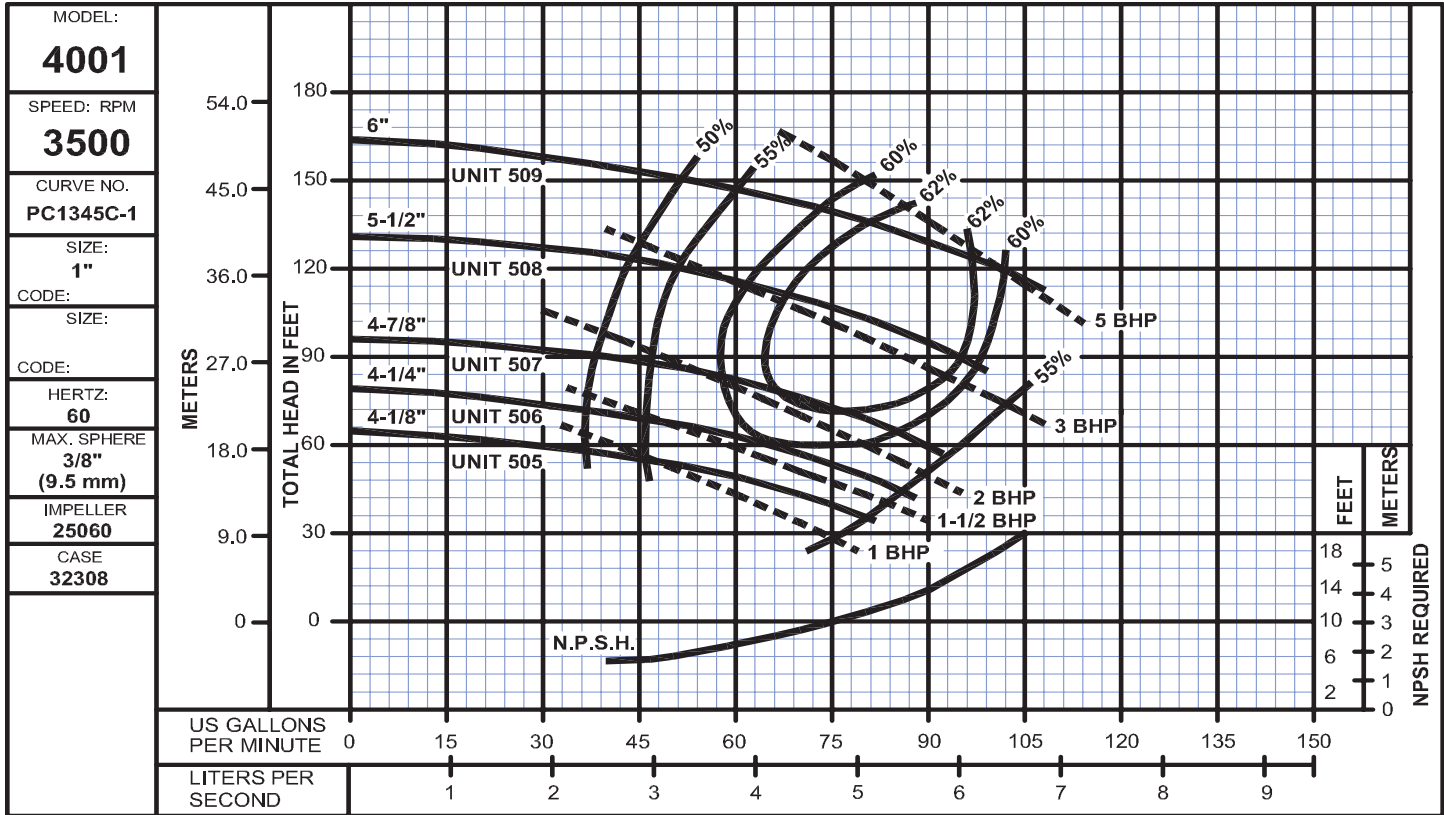
Sizes: 1" & 1½", 3500RPM

Bulletin 4011

# DEMING®

www.cranepumps.com

## End Suction Centrifugal Pumps - Semi-Open Impeller



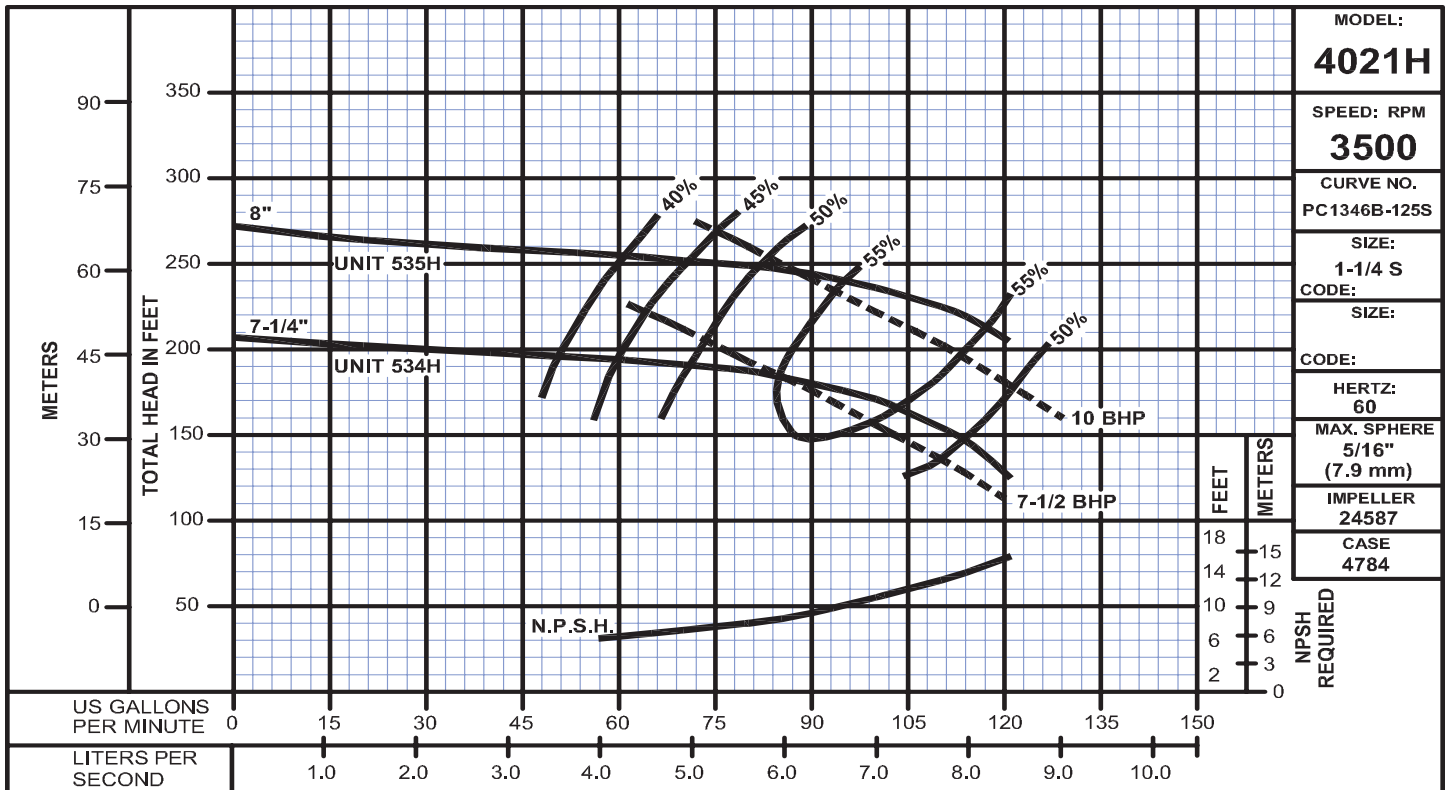
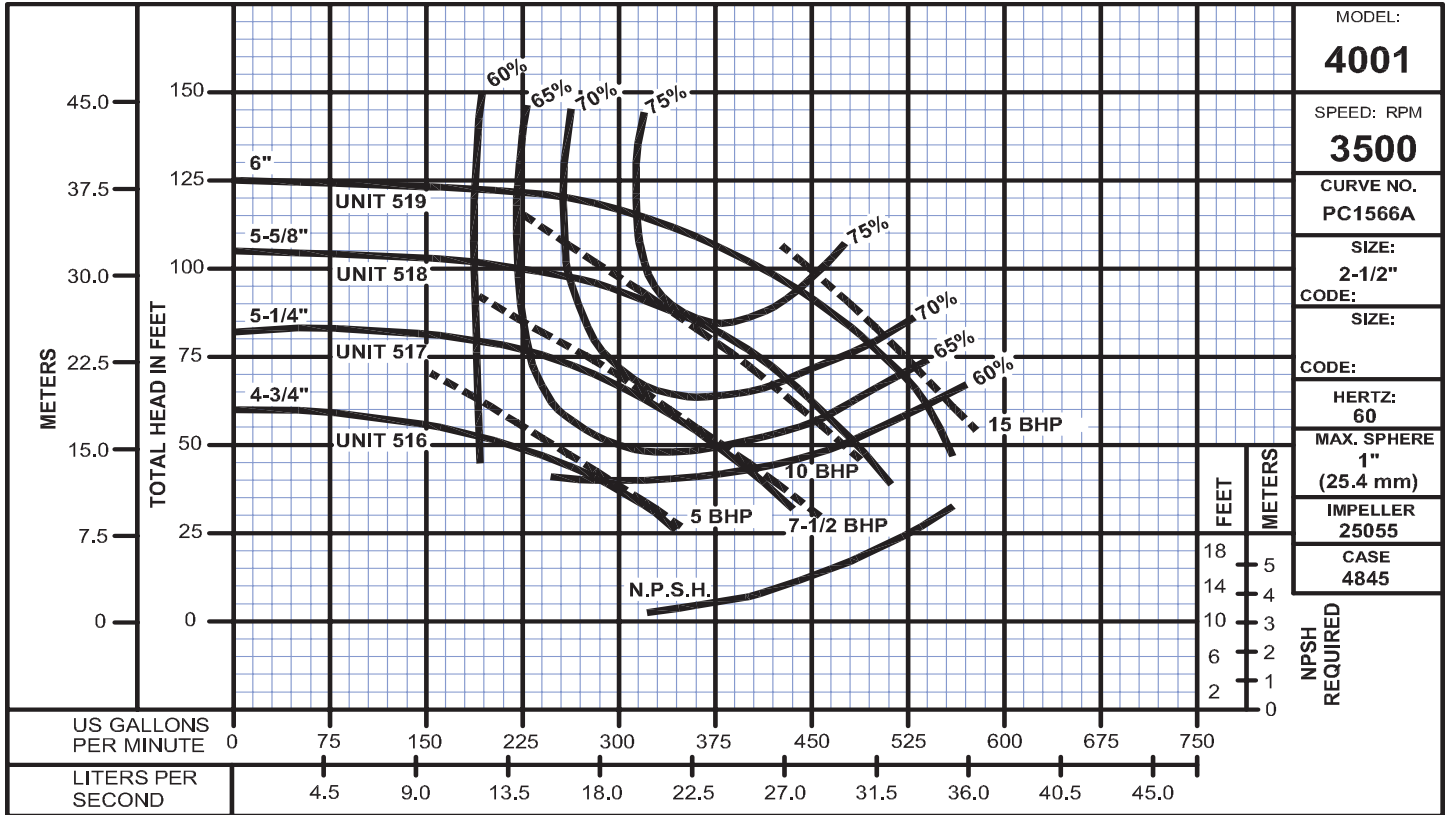
SECTION 14  
PAGE 36  
DATE 7/07

**CRANE**  
A Crane Co. Company

PUMPS & SYSTEMS

USA: (937) 778-8947 • Canada: (905) 457-6223 • International: (937) 615-3598

### End Suction Centrifugal Pumps - Semi-Open Impeller



# Fig. 4011, 4021 & 4021H

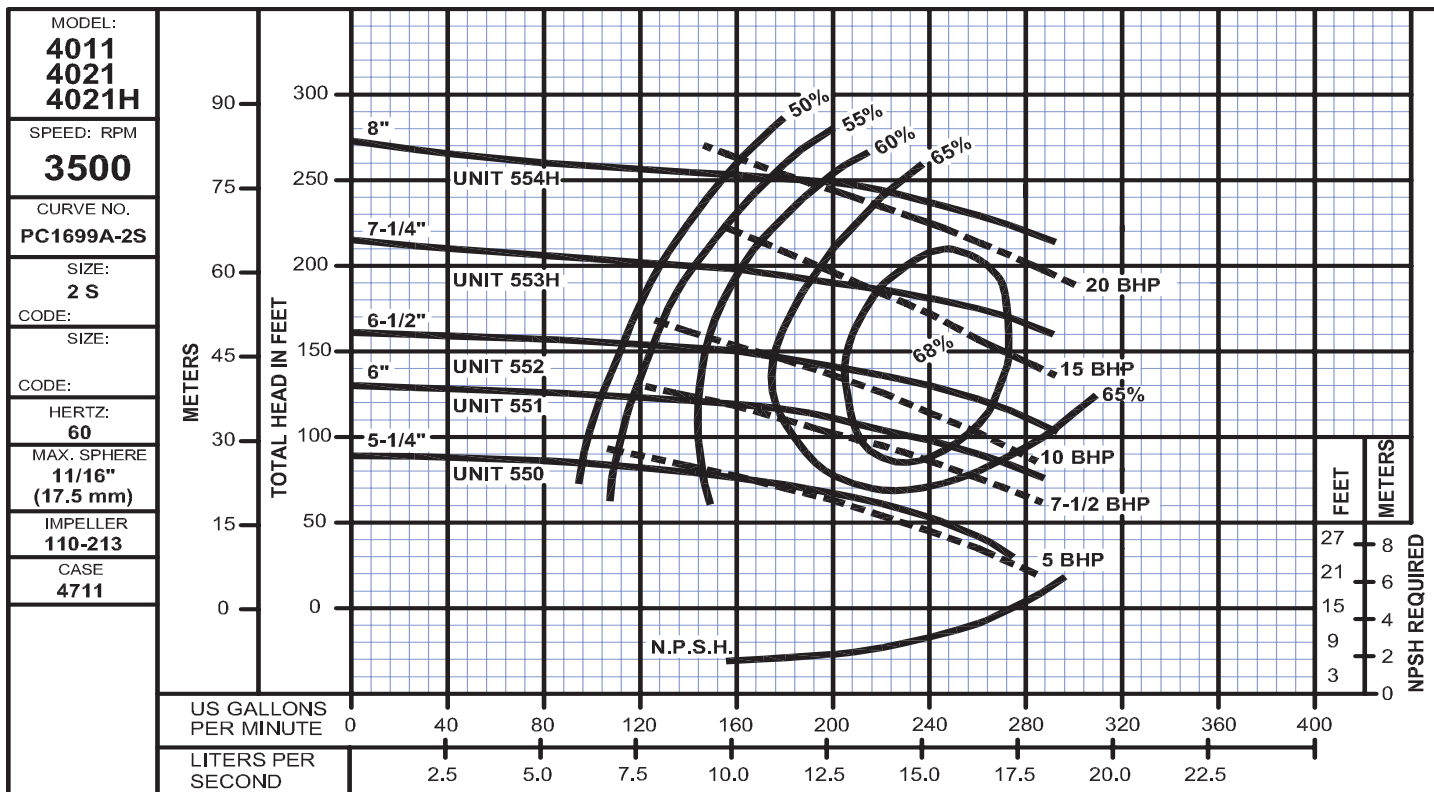
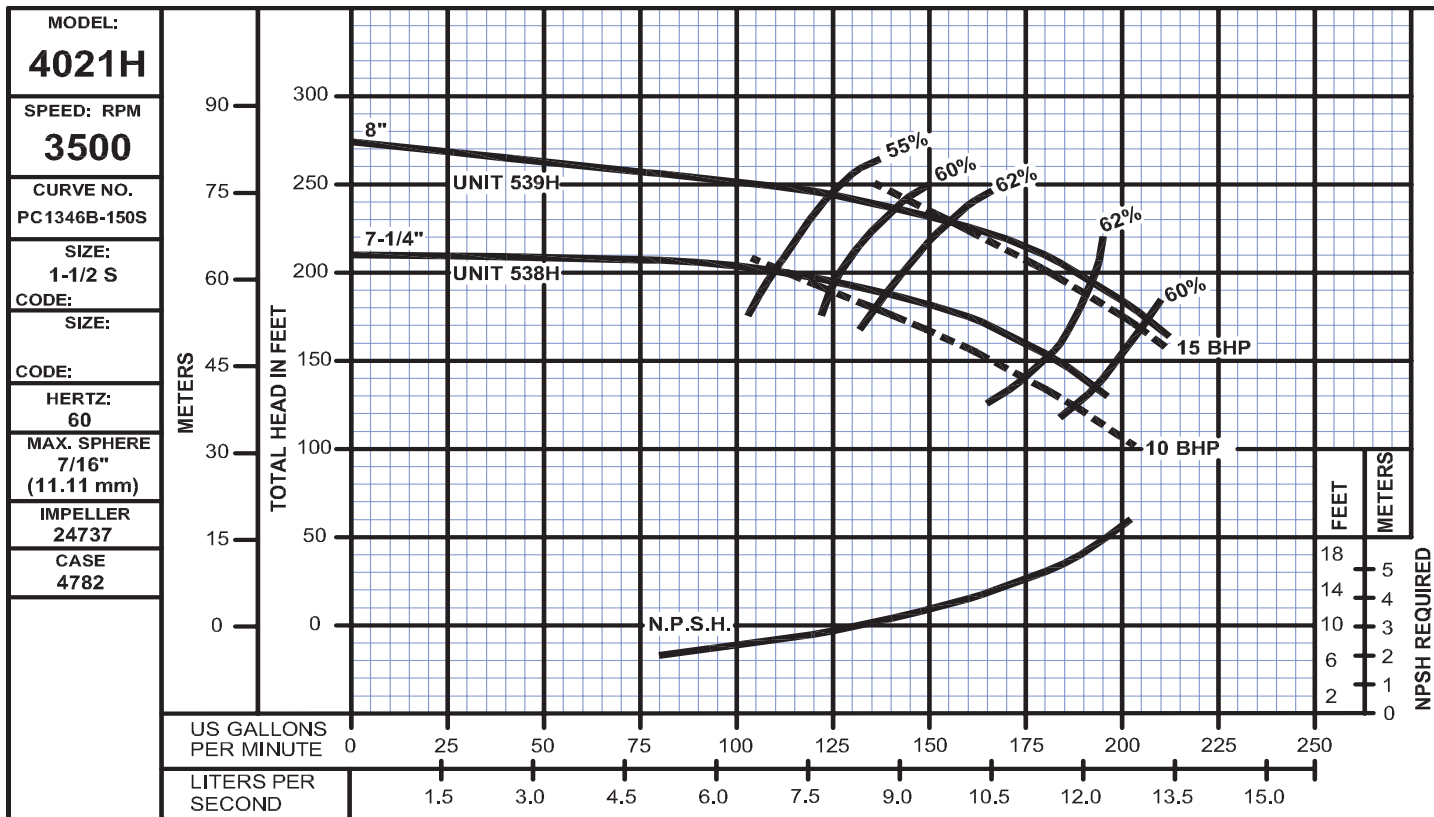
Sizes: 1½S & 2S, 3500RPM

Bulletin 4011

# DEMING®

www.cranepumps.com

## End Suction Centrifugal Pumps - Semi-Open Impeller



SECTION 14  
PAGE 38  
DATE 7/07

**CRANE**  
A Crane Co. Company

PUMPS & SYSTEMS

USA: (937) 778-8947 • Canada: (905) 457-6223 • International: (937) 615-3598

### End Suction Centrifugal Pumps - Semi-Open Impeller

