

REPAIR KIT FOR CR SERIES TURBINE PUMPS:

**CR Kit includes:** Impeller, Raceway, Shaft Seal, O-Ring, Impeller Locknut and Instructions.

Catalog No.	CR Series
22850-6	CR6M Pumps
22850-6MV	CR6MV Pumps

REPAIR KIT FOR E, EC, & ED SERIES TURBINE PUMPS: **E, EC & ED Kit includes:** Impeller, Raceway and Instructions.

REPAIR KITS FOR CT/ET & CS/ES SERIES TURBIN PUMPS: CT/ET Kits includes: Ipeller, Raceway, Shaft Seal, Seal Ring, Impeller Locknut and Instructions.

Catalog No.	CT Series	ET Series
20158-5	CT5M Pumps	ET5M Pumps
20158-6	CT6M Pumps	ET6M Pumps
20158-7	CT7M Pumps	ET7M Pumps
20158-8	CT8M Pumps	ET8M Pumps

**CS/ES Kit includes:** Impeller, Raceway, Shaft Seal, Seal Ring, Suction Sleeve, Impeller Locknut, Raceway Screws, Shaft Key and Instructions.

Catalog No.	CS Series	ES Series
20522-5	CS5M Pumps	ES5M Pumps
20522-6	CS6M Pumps	ES6M Pumps
20522-7	CS7M Pumps	ES7M Pumps
20522-8	CS8M Pumps	ES8M Pumps
20522-9	CS9M Pumps	ES9M Pumps

Catalog No.	E Series	EC & ED Series
21707-4	E16M	EC4M
21707-5	E17M	EC5M
21707-6	E18M	EC6M
21707-7	E19M	EC7M
21707-8	E20M	EC8M
21707-9	E21M	EC9M
21707-10	E22M	EC10M
21710-8	E23M	ED8M
21710-9	E24M	ED9M
21710-10	E25M	ED10M
21710-11	E26M	ED11M
21710-12	E27M	ED12M
21710-14	E29M	ED14M

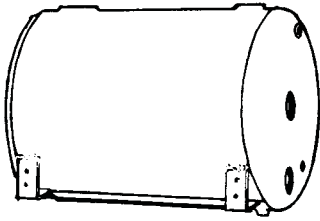
### SPANNER WRENCH

For adjusting impeller-raceway clearance on BURKS Turbine pumps. Adjusting instructions available on request.



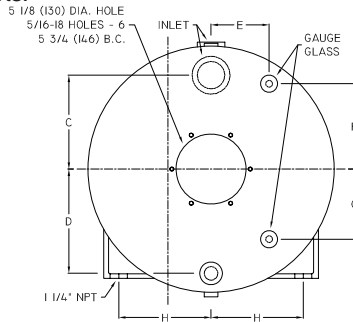
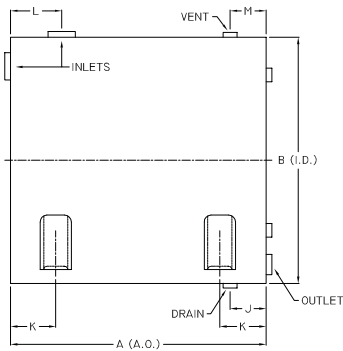
**Catalog No.** - 07492 - 3/16" pins  
**Catalog No.** - 07492-A - 5/32" pins

## Industrial Accessories



**HORIZONTAL RECEIVER TANKS**  
 CONDENSATE RECEIVER TANKS ARE DESIGNED FOR GRAVITY RETURN SYSTEMS ONLY, AND ARE NOT TO BE PRESSURIZED. TANKS MUST BE VENTED TO ATMOSPHERE TO PREVENT PRESSURE BUILD UP IN TANK. VENT SIZE SHALL BE 1/4" (32mm) MINIMUM.

Tanks are constructed of heavy gauge black steel protected from rust with special metal paint - and are fitted with suitable openings for return lines, water gauges and pump connections. Tanks are regularly furnished with threaded angle lugs designed to accommodate standard 1/4" (32mm) pipe supports.



NOTE: 18" (457mm) diameter tanks require 10" (254mm) water gauge. 24" (610mm) and 30" (762mm) diameter tanks require 16" (406mm) water gauge.

DO NOT USE FOR CONSTRUCTION PURPOSES. CERTIFIED DIMENSION DRAWINGS AVAILABLE ON REQUEST.

**Available in the following sizes. DIMENSIONS IN INCHES**

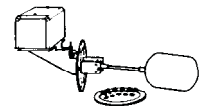
Tank No.	Capacity	A	B	C	D	E	F	G	H	J	K	L	M	NPT TAPPINGS				
														Inlet	Outlet	Vent	Drain	Gauge Glass
07193	20 Gal.	20	18	6 7/8	7 5/8	4 1/4	6 1/4	5 1/8	6 3/4	2 5/8	3 3/8	3 3/4	3 3/4	2	1	1	1	1/2
07195	30 Gal.	30	18	8 1/8	6 3/8	4 1/4	6 1/4	5 1/8	6 3/4	2 5/8	8	3 3/4	3 3/4	3	2 1/2	1 1/2	1	1/2
07149	60 Gal.	32	24	9 1/8	9 5/8	4 1/4	9 1/8	8 1/4	8 1/2	2 5/8	8	3 3/4	3 3/4	3	2 1/2	1 1/2	1	1/2
07189	100 Gal.	52	24	9 1/8	9 5/8	4 1/4	9 1/8	8 1/4	8 1/2	2 5/8	12	3 3/4	3 3/4	3	2 1/2	1 1/2	1	1/2
08355	200 Gal.	66	30	12	12 5/8	4 1/4	9 1/8	8 1/4	10 3/4	2 5/8	17	3 3/4	3 3/4	3	2 1/2	1 1/2		1/2

**Available in the following sizes. DIMENSIONS IN MILLIMETERS**

Tank No.	Capacity	A	B	C	D	E	F	G	H	J	K	L	M	NPT TAPPINGS (in inches)				
														Inlet	Outlet	Vent	Drain	Gauge Glass
07193	76 Liters	508	457	175	194	108	159	130	172	67	86	95	95	2	1	1	1	1/2
07195	114 Liters	762	457	156	162	108	159	130	172	67	203	95	95	3	2 1/2	1 1/2	1	1/2
07149	227 liters	813	610	232	245	108	232	210	216	67	203	95	95	3	2 1/2	1 1/2	1	1/2
07189	379 liters	1321	610	232	245	108	232	210	216	67	305	95	95	3	2 1/2	1 1/2	1	1/2
08355	757 Liters	1676	762	305	321	108	232	210	273	67	432	95	95	3	2 1/2	1 1/2		1/2

### MECHANICAL ALTERNATOR SWITCH

For duplex condensation return installations with horizontal tanks. This switch does not provide overload protection.



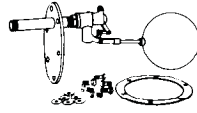
Catalog No. - 07994

Electrical Ratings			
Volts	1 Phase	3 Phase	D.C.
110/115	1 1/2 HP	2 HP	1/2 HP
208/230	2 HP	3 HP	1/2 HP
440/550	-----	1 HP	-----
600	Pilot Duty	Pilot Duty	Pilot Duty
32	-----	-----	1/4 HP

## Industrial Accessories

### MAKE-UP VALVES FOR HORIZONTAL TANKS

This type Make-up Valve is furnished complete as shown, with mounting flange, nipple, rod, copper float and bronze valve. Two sizes are available, 1/2" (13mm) and 3/4" (19mm). Below is table indicating delivery in gallons per hour at various pressures with valve fully open.

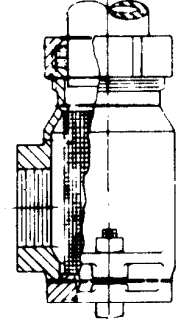


Pressure PSI (kpa)	Catalog No. 07324 1/2" (13mm) Valve GPH (LPM)	Catalog No. 07148 3/4" (19mm) Valve GPH (LPM)
10 (69)	255 (965)	2100 (7949)
20 (138)	350 (1325)	2390 (9047)
30 (207)	425 (1609)	2800 (10599)
40 (276)	490 (1855)	3900 (14763)

Where pressure is more than 40 lbs (276 kpa), pressure regulating valve should also be installed.

### COMPRESSION STRAINER

Furnished with compression type adapter for suction piping. Eliminates thread cutting, expensive fittings and cuts installation time. Cap on bottom of strainer easily removed to inspect and clean screen.



Catalog No.	Size (NPT)
08872	1"
09194	1½"

### WATER GAUGES

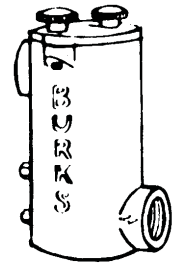
Cast bronze fittings and brass guard rods. Lengths 10" (254mm) and 16" (406mm). For 1/2" pipe tapping



Catalog No.	Length A in inches (mm)	Glass Length in inches (mm)
07175	11¾" (289)	10 (254)
07178	17¾" (441)	16 (406)

### LINT STRAINER

Number 8 mesh, type 303 stainless steel strainer basket is enclosed in aluminum case. 1/4" tapping provided for vacuum gauge connection. For use only on suction side of pump. 25 psi (172kpa) maximum inlet pressure.



Size: 1½"  
Catalog No. - 05465

### STRAINER

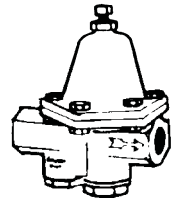
Furnished with bronze screen. Cap on bottom of strainer easily removed to inspect and clean screen. Tapping provided for vacuum gauge.



Catalog No.	Size NPT
07182	1"
07182A (Brass)	1"
07183	1½"
07183A (Brass)	1½"
07184	2½"
07184A (Brass)	2½"

### PRESSURE REGULATING VALVE

This Pressure Reducing and Regulating Valve is recommended on all BURKS Boiler Feed units where the (city) water pressure exceeds 40 pounds (276kpa) in order to insure satisfactory operation of float controlled make-up valve in receiver tank.

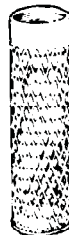


An all bronze valve, having a yoke design, that make extremely tight closing valve and produces greater volume at normal pressures. Available in two sizes, 1/2" and 3/4". It is designed for inlet pressure as high as 250 pounds per square inch (1724kpa) and delivery pressures ranging from 10 pounds per square inch (69kpa) to 150 pounds per square inch (1034kpa). Valves shown for outlet pressure ranges of 15 psi (103kpa) - 85 psi (586kpa). Set at 45 psi (310kpa). Flow at 40 psi (276kpa) differential: 1/2" valve 9 gpm (0.5lps) --- 3/4" valve 15 gpm (0.9lps)

Catalog No.	Size (NPT)	Length in (mm)	HT in (mm)	Width in (mm)
07266	1/2"	5 (127)	5 (127)	4 (102)
07267	3/4"	5½ (140)	7 (178)	4½ (114)

### STRAINER

Cadmium plated steel strainer for suction line. Included with each GWT5A engine driven pump. For 2" NPT pipe

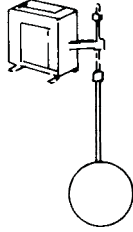


Catalog No. - 20692

## Industrial Accessories

### FLOAT SWITCH

Two-pole type float switch. Contacts open on liquid rise. Can be adjusted for reverse operation. Includes: 01549 Switch, 03152 6" (152mm) Float Ball, 1547 60" (1524mm) Rod and hardware.

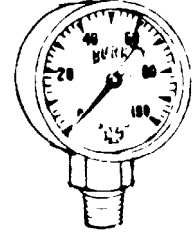


**Catalog No. 07172**

H.P. Ratings			
Volts	1 Phase	2 or 3 Phase	D.C.
115	2 HP	3 HP	1 HP
230	3 HP	5 HP	1 HP
460/575	5 HP	5 HP	----
32	----	----	1/2 HP

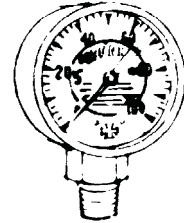
### PRESSURE GAUGES

Catalog No.	Description
02280	2" (51mm) Gauge 100 psi (690 kpa) 1/4" Standard Pipe Threads
03934	Same as above except with connection on back
07196	3 1/2" (89mm) Gauge 200 psi (1379 kpa) 1/4" Standard Pipe Thread



### VACUUM GAUGE

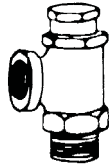
A 2 1/2" (64mm) gauge which has double scale showing inches of vacuum in black figures and equivalent suction lift in feet in red figures. Has 1/4" standard pipe threads.



**Catalog No. - 01893**

### PRESSURE RELIEF VALVE

Brass "pop-off" type pressure relief valve. **(Not for use as a by-pass valve).**



Catalog No.	Size (NPT)	Valve Set PSI (kpa)	Adj. Range PSI (kpa)	Max. Flow Rate
00234	1/2	65 (448)	0-90 (0-621)	24 GPM (1.5 LPS)
01904	3/4	65 (448)	50-100 (345-690)	27 GPM (1.7 LPS)
01906	3/4	115 (793)	80-150 (552-1034)	27 GPM (1.7 LPS)
01907	1	65 (448)	65-175 (448-1207)	30 GPM (1.9 LPS)
01908	1	85 (586)		
01909	1	115 (793)		

### TOUCH-UP ENAMEL

Convenient aerosol can of BURKS blue enamel for touch-ups or refinishing. 12 oz. can



**Catalog No. - 021877-A**