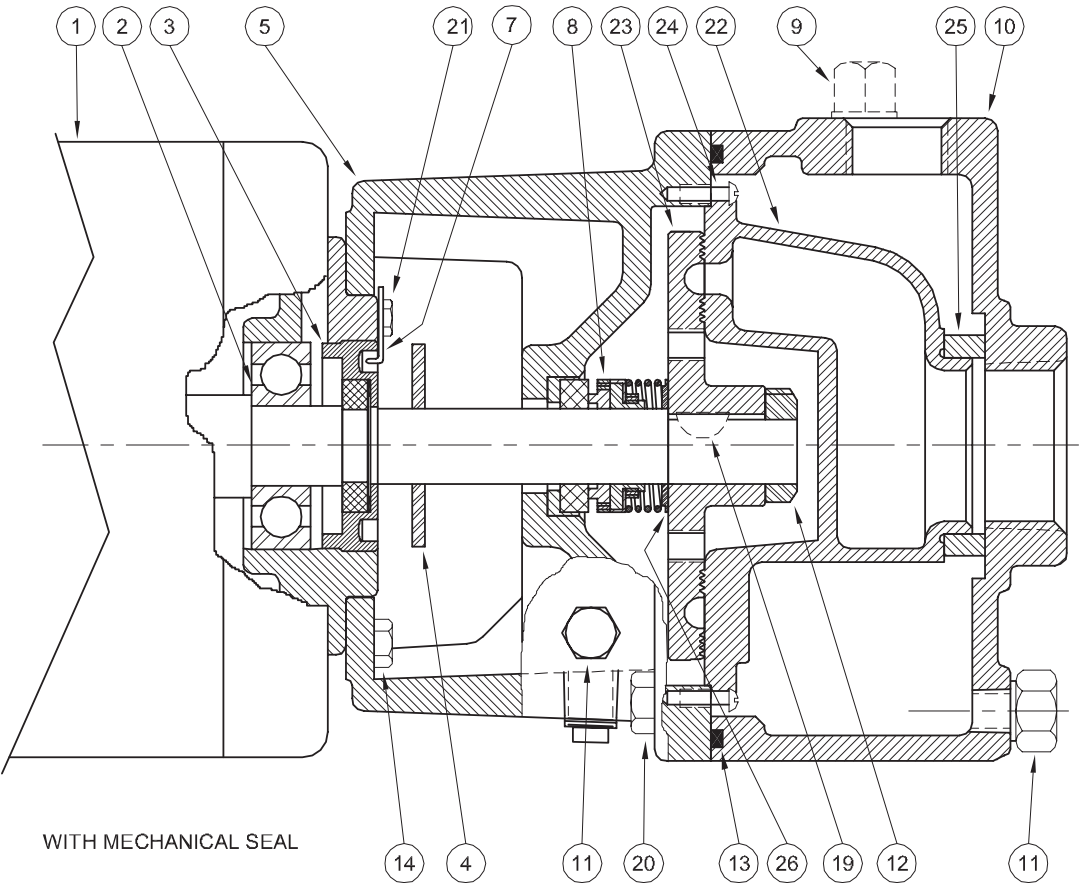


WITH STUFFING BOX



WITH MECHANICAL SEAL

| 1 - MOTORS | | |
|-----------------------------------|-------------|-----|
| RPM & PHASE | PART NUMBER | HP |
| 1725RPM - OPEN DRIP PROOF | | |
| 1725 RPM Single Phase (ODP) | 09797 | 1/3 |
| | 09799 | 1/2 |
| 1725 RPM Three Phase (ODP) | 09798 | 1/3 |
| | 09800 | 1/2 |
| 3450RPM - OPEN DRIP PROOF | | |
| 3450 RPM Single Phase (ODP) | 09805 | 1 |
| | 09807 | 1½ |
| | 09809 | 2 |
| 3450 RPM Three Phase (ODP) | 09806 | 1 |
| | 09808 | 1½ |
| | 09810 | 2 |
| | 09812 | 3 |
| | 09855 | 5 |
| 3450RPM - TOTALLY ENCLOSED | | |
| 3450 RPM Three Phase (TEFC) | 09824 | 1½ |
| | 09845 | 2 |
| | 09846 | 3 |

| SYMBOL NUMBER | PART NUMBER | QTY | DESCRIPTION |
|---|-------------|-----|---------------------------------|
| 24 | 02535 | 2 | Screw, Raceway to Frame |
| 25 | 04231 | 1 | Suction Sleeve - Buna-N (Std) |
| | 09695 | 1 | Suction Sleeve - Viton |
| | 20285 | 1 | Suction Sleeve - EPT |
| DIFFERING PARTS FOR ALL BRONZE CONSTRUCTION | | | |
| 5 | 09787-A | 1 | Frame (for mechanical seal) |
| 6 | 09792-A | 1 | Frame (for stuffing box) |
| 10 | 09790-C | 1 | Case |
| 14 | 03121-B | 4 | Screw, 1/4-20 x 3/4" Lg |
| 20 | 08771 | 4 | Screw, 7/16-14 x 1 1/4" Lg - SS |

| REPAIR KITS FOR CT SERIES PUMPS | |
|---------------------------------|--------------|
| CATALOG NO. | FOR USE WITH |
| 20522-5 | CS5M |
| 20522-6 | CS6M |
| 20522-7 | CS7M |
| 20522-8 | CS8M |
| 20522-9 | CS9M |

Kit includes: Impeller, Raceway, Shaft Seal, O-ring Gasket, Suction Sleeve, Raceway Screws, Impeller Locknut, Shaft Key and Instructions

(*) Standard impellers are suitable for fluid temperatures to 250°F (121°C). For higher temperatures, add the designation "HT" to impeller part number. This includes all "MJ" Jacketed Seal Pumps. EXAMPLE: SA09788-HT-5

| SYMBOL NUMBER | PART NUMBER | QTY | DESCRIPTION |
|---------------|--------------|-----|---|
| 2 | 09144 | 1 | Ball Bearing - Pump End |
| | 05290 | 1 | Ball Bearing - Switch End (Not Shown) |
| 3 | 04206-A | 1 | Screw, Impeller Adjusting |
| 4 | 08324 | 1 | Slinger Washer |
| 5 | 09787 | 1 | Frame (for mechanical seal) |
| 6 | 09792 | 1 | Frame (for stuffing box) |
| 7 | 07576 | 1 | Adjusting Screw Lock |
| 8 | 08991 | 1 | Mechanical Seal - Buna-N |
| | 09813-C | 1 | Mechanical Seal - Viton |
| | 21934 | 1 | Mechanical Seal - EPT |
| 9 | 02953 | 1 | Plug, 1/2" |
| 10 | 09790-B | 1 | Case |
| 11 | 04236 | 3 | Plug, 1/4-18 NPT |
| 12 | 01404 | 1 | Impeller Lock Nut |
| 13 | 09791 | 1 | O-Ring Gasket - Buna-N |
| | 09817 | 1 | O-Ring Gasket - Viton |
| | 22135 | 1 | O-Ring Gasket - EPT |
| | 22104 | 1 | O-Ring Gasket - Teflon |
| 14 | 03121 | 4 | Screw, 1/4" x 3/4" |
| 15 | 05812-B | 1 | Gland, Stuffing Box |
| 16 | 07003 | 2 | Gland Bolt |
| 17 | 04211 | 2 | Gland Nut |
| 18 | 05468 | 5 | Packing |
| 19 | 01457 | 1 | Key, Woodruff (As Shown - Repair Kits Only) |
| | 21748-A | 1 | Key, Square |
| 20 | 01931 | 4 | Screw, 7/16-14 x 1 1/4" Lg |
| 21 | 07577 | 1 | Screw, #10 x 3/8" Lg |
| 22 | 09789-5 | 1 | Raceway for CS5M |
| | 09789-6 | 1 | Raceway for CS6M |
| | 09789-7 | 1 | Raceway for CS7M |
| | 09789-8 | 1 | Raceway for CS8M |
| | 09789-9 | 1 | Raceway for CS9M |
| * 23 | SA09788-5 | 1 | Impeller for CS5M |
| | SA09788-6 | 1 | Impeller for CS6M |
| | SA09788-7 | 1 | Impeller for CS7M |
| | SA09788-HT-8 | 1 | Impeller for CS8M |
| | SA09788-HT-9 | 1 | Impeller for CS9M |