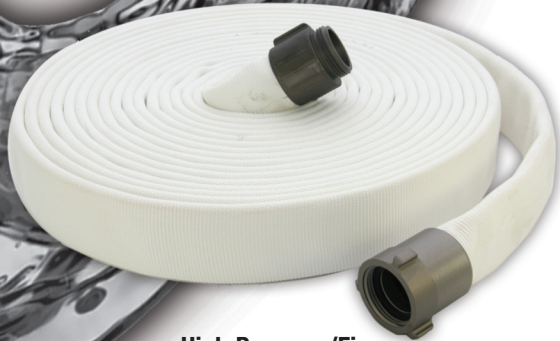


## Suction & Discharge Hose

- **PVC Reinforced Suction Hose with One Male & Female NPSH Connection; 1" to 6" Sizes**
- **PVC Flexible Discharge Hose with One Male & Female NPSH Connection; 1" to 6" Sizes**
- **1" & 2-1/2" Single Jacket Polyester Industrial High Pressure Fire Hose**
- **2" & 3" High Pressure or General Purpose Hose Kits**



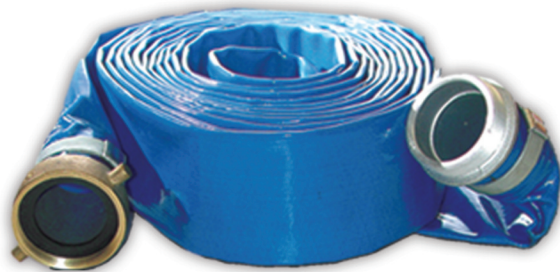
PVC Reinforced Suction Hose



High Pressure/Fire Discharge Hose



Hose Kit



PVC Flexible Discharge Hose



400 Spring Street • Royersford, PA 19468 USA

[www.amtpump.com](http://www.amtpump.com) • 888-amt-pump (268-7867)

For use with nonflammable liquids compatible with pump component materials. Viton® and Teflon® are registered trademarks of E. I. Dupont.

## HOSE SUCTION

Part No.	PVC Reinforced Water Suction Hose	Ship Wt. (Lbs.)
<b>C222-90</b>	1" x 15' PVC Water Suction Hose Assembly	8
<b>C220-90</b>	1-1/2" x 20' PVC Water Suction Hose Assembly	10
<b>C221-90</b>	2" x 20' PVC Water Suction Hose Assembly	17
<b>C355-90</b>	2-1/2" x 20' PVC Water Suction Hose Assembly	24
<b>C356-90</b>	3" x 20' PVC Water Suction Hose Assembly	28
<b>C357-90</b>	4" x 20' PVC Water Suction Hose Assembly	38
<b>C354-90</b>	6" x 20' PVC Water Suction Hose Assembly	75

Water suction hose designed for construction, mining, marine and irrigation purposes. Construction: green, flexible, abrasion-resistant PVC with a rigid PVC reinforcement for full vacuum. Smooth Bore.

## HOSE DISCHARGE

PVC Water Discharge Hose Assembly Size	Part No. (25 Ft Length)	Ship Wt. (Lbs.)	Part No. (50 Ft. Length)	Ship Wt. (Lbs.)
1-1/2"	<b>C216-90</b>	6	<b>C372-90</b>	11
2"	<b>C217-90</b>	8	<b>C373-90</b>	19
3"	<b>C358-90</b>	11	<b>C374-90</b>	22
4"	<b>C359-90</b>	17	<b>C375-90</b>	32
6"	<b>C353-90</b>	25	<b>C376-90</b>	54

Designed for water discharge services. Durable, lightweight discharge hose that rolls up flat for easy storage. Construction: close woven nylon jacket impregnated with polyvinyl chloride. Mildew resistant.

## HIGH PRESSURE FIRE HOSE

Polyester Industrial High Pressure/ Fire Hose Assembly Size	Part No. (50 Ft Length)	Ship Wt. (Lbs.)
1"	<b>C331-90</b>	9
1-1/2"	<b>C333-90</b>	11
2"	<b>C335-90</b>	22
2-1/2"	<b>C337-90</b>	25

Designed for high pressure applications such as: fire fighting, fire protection and industrial washdown. Test pressure rating is suitable up to 300 PSI. Construction: Single jacket 100% polyester, ozone resistant tube and black SBR age resistant rubber tube that will not absorb moisture. **Aluminum Male x Female NPSH rocker lug couplings.**

\*Fire hose nozzles & adjustable Spanner / Hydrant Wrench also available.

## HOSE KITS

Part No.	Hose Kits, Hose and Fittings	Ship Wt. (Lbs.)
<b>55-362</b>	2" General Purpose Hose Kit with 20 ft. 2" suction and 25 ft. 2" discharge hose and hose wrench.	20
<b>55-363</b>	3" General Purpose Hose Kit with 20 ft. 3" suction and 25 ft. 3" lay flat discharge hose and hose wrench.	20
<b>55-338</b>	2" High Pressure Hose Kit with 20 ft. 2" suction and 100 ft. 1-1/2" high pressure (100 PSI) discharge hose, (1) 1-1/2" fire nozzle, 1-1/2" x 2" adapter and hose wrench.	38

**All suction and discharge hose supplied with Male x Female NPSH couplings.**

**Female NPSH is compatible with Male NPT connection.**

**Temperature Range:  
10°F to 150°F**